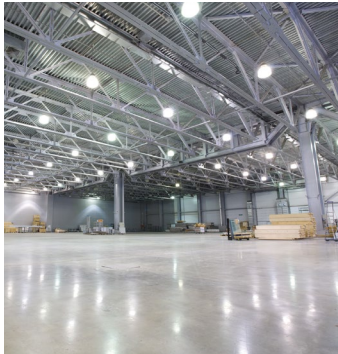


# ENERGY WISE

for your Business



**[Your Cooperative] can help select incentives that are the most energy efficient. There are many ways you can save on energy costs with our wide selection of customizable programs, efficiency rebates and incentives. This sheet provide a summary of the programs that are designed especially for businesses like yours. Contact one of our energy experts to help identify a program that will work for your business.**

## CI&A PROGRAMS OVERVIEW

There are many ways to save on your energy costs with our wide selection of programs, efficiency rebates and incentives. Contact your cooperative's energy expert for guidance, tools and expertise to assist you in making informed energy decisions that will improve your bottom line.

**Efficiency** – With a variety of rebates available, your cooperative can help identify cost-effective efficiency upgrades that save energy and money, and increase profitability.

**Electric Transportation** – Electricity is a domestically produced transportation fuel that will transform our nation's transportation sector. Today, the technology and infrastructure exist to promote transportation applications that move both people and goods using electricity as a fuel.

**Renewable Energy** – While the electricity delivered to your business includes increasing amounts of renewable energy, your cooperative offers additional programs to support wind and solar energy. Ask about Wellspring Renewable for Business.

**Load Management** – Taking advantage of your cooperatives reduced electric rates is one of the easiest ways for businesses to reduce energy costs while participating in a program that helps keep rates low for all members.

**Services and Resources** – In addition to the energy-saving programs and rebates, your cooperatives offer on-going services and resources. Contact your energy expert to learn more about services and resources available for your business.

## Efficiency Programs

**Agriculture** – Prescriptive and custom rebates are available to members for the installation of energy efficient agricultural equipment. Rebates include, but are not limited to, ventilation, LED lighting, agricultural audit and robotic milking systems. The residence on the farm site is not eligible, however, all business use applications are eligible.



---

# Let us be your go-to energy experts – We can help you grow savings!

---

**Audits, Building Studies and Commissioning** – Rebates, resources and assistance are available to help you identify energy saving opportunities in new and existing facilities. Assistance includes, but is not limited to, energy audits, energy design assistance, building certifications, and in-depth commissioning of equipment.

**Commercial Food Service** – ENERGYSTAR® commercial kitchen food service equipment is the most efficient option. Nearly all commercial kitchen equipment is available as gas or electric. Electric equipment often provides a competitive advantage over gas by improving the cooking process, increasing production and food quality, improving indoor air quality and reducing kitchen safety hazards.

**Compressed Air** – Compressed air can be a significant energy user in a facility affecting operating costs, productivity, and profitability. These compressed air rebates can help identify and implement energy efficiency measures to reduce operating costs, improve productivity, enhance system efficiency, and increase profitability.

**Custom Energy Rebates** – Your cooperative offers custom rebates to CI&A members who purchase and install energy-efficient products which exceed conventional models.

**Electric Transportation** – The electric forklift and EV charger programs provide rebates to commercial members for EV chargers, electric forklifts and high frequency battery chargers.

**Motors and Drives** – increase the efficiency of your electrical motors and save. Your cooperative offers rebates to commercial members who install VFDs, VSDs or retrofit existing small motors with high-efficiency electronically commutated motors (ECMS).

**Healthy Buildings & HVAC** – Replacing a dated or unreliable system and upgrading to a higher efficiency model will provide immediate savings, lower maintenance costs, provide up-to-date, reliable equipment and provide more comfortable working conditions.

**Lighting** – did you know that lighting often accounts for over 40% of your energy bill? Rebates are available for LED lighting retrofit projects and new construction.



## Renewable Energy Programs

The Wellspring program provides businesses with an easy, affordable and meaningful way to support renewable energy efforts.

## Load Management

**Interruptible Programs** – If you curtail energy use or add a generator, you can benefit from reduced electrical rates year-round. Contact your local cooperative's energy expert to learn more.

**Off-Peak Programs** – help your business save money in two ways; first, participating members receive an incentive such as a lower electricity rate or bill credit, second, these programs help control wholesale power costs.

## Financing

Your local cooperative is committed to helping businesses expand and grow. From providing loans, to helping plan and manage your energy needs, we have the experience to bring together all the resources needed to assist you and your business.

## CONTACT US

For any questions or assistance in making these savings a reality for your business, please contact your local electric cooperative.