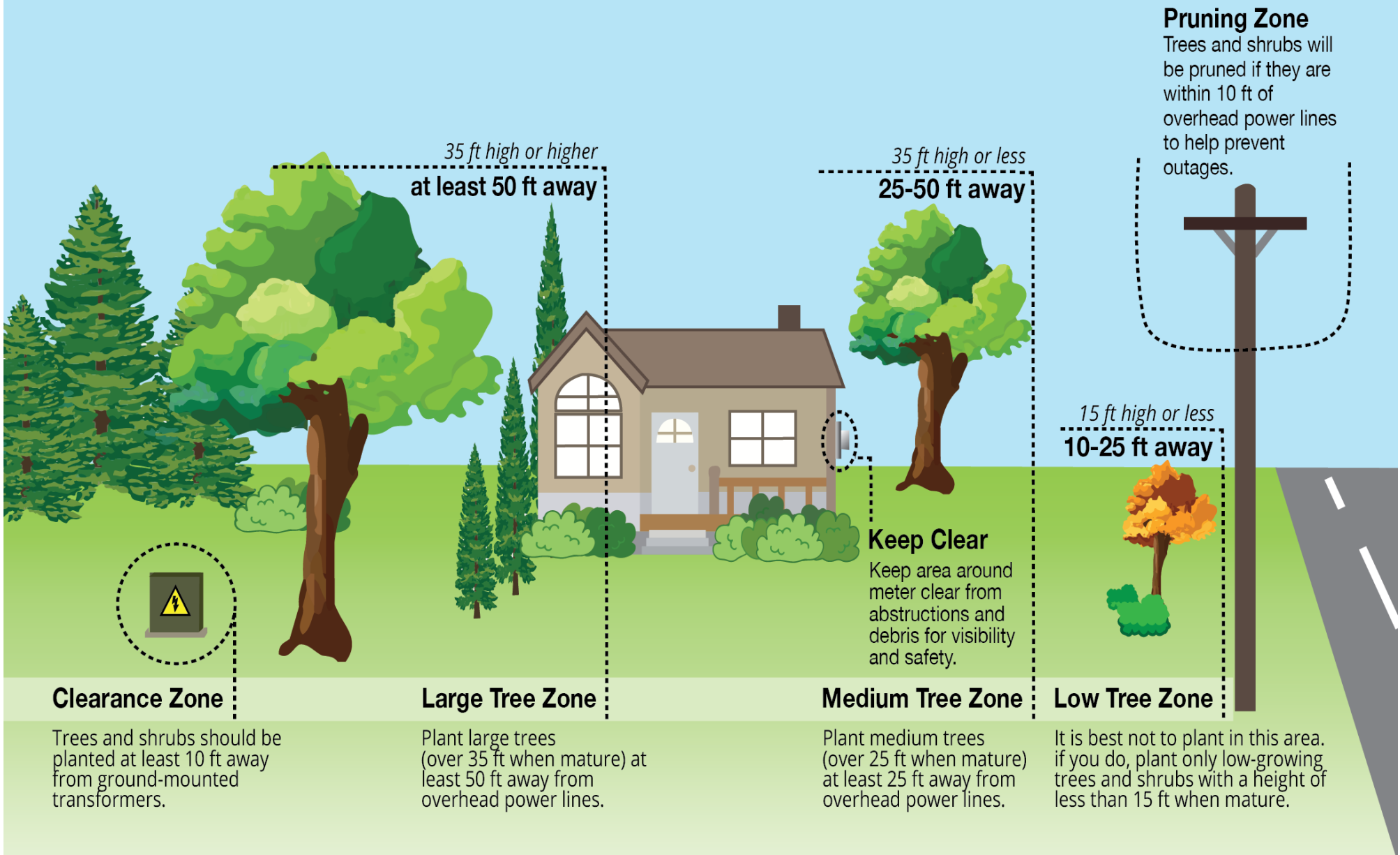


RIGHT TREE, RIGHT PLACE!

Before planting new trees to improve the look of your yard, you will need to keep a few things in mind.



Pruning Zone

Trees and shrubs will be pruned if they are within 10 ft of overhead power lines to help prevent outages.

Clearance Zone

Trees and shrubs should be planted at least 10 ft away from ground-mounted transformers.

Large Tree Zone

Plant large trees (over 35 ft when mature) at least 50 ft away from overhead power lines.

Medium Tree Zone

Plant medium trees (over 25 ft when mature) at least 25 ft away from overhead power lines.

Low Tree Zone

It is best not to plant in this area. If you do, plant only low-growing trees and shrubs with a height of less than 15 ft when mature.

Keep Clear

Keep area around meter clear from obstructions and debris for visibility and safety.