

McLeod Cooperative Power NEWS

June 2019

Construction plans progressing for new Co-op facility

Planning and pre-construction work is moving along for the Co-op's new building, which will bring all of its operations under one roof. The plan is to have office, warehouse, truck and material storage all be located at the same site at 3515 11th Street East in Glencoe before the fall of 2020.

Bids have been awarded for the long lead items like the pre-cast concrete panels and concrete work, steel supply and steel erection. Bidding on all the remaining subcontractor work should be wrapped up by mid-July. The General Contractor, Adolfson and Peterson Construction, anticipates a construction start date in late July and to have the building enclosed before November so interior construction work can continue through the winter. If all goes well, the building construction may be completed by the end of August 2020.

The planned building totals 52,000 square feet. About 40,000 square feet, is for the highest priority improvement needed, the new garage and warehouse. It has enough room to house our bucket trucks, diggers, trailers, service trucks, other equipment, and material inventory. The size allows for a drive-through concept, as much as possible, rather than backing up big trucks, as we must do now.

The remaining 12,000 square feet will be devoted to office space. We are very pleased to keep the office sizes to the modest size we have now, perhaps even smaller, but increase the board room size to be large enough to have all employees in the room at one time for training or meetings. The Board of Directors readily agreed to the use of this room as a multi-function room versus strictly as a Board Room.

The new building will be handicap-accessible, so members can visit us without having to navigate any stairs. The plans also include a drop-off payment box so



Architect's drawing of future McLeod Co-op Power building.

members can deposit payments at the Co-op office without having to get out of their vehicle.

As the 2020 move-in date approaches, we will be working on the sale of the Co-op's existing office facility, parking lot, and pole yard sites. As part of the plan to consolidate onto one site, the Co-op already sold off the former Agri-Fleet store building on 13th Street in Glencoe last year. It is now home to Lazy Loon Brewing Company, which is scheduled to open later in 2019.

The Co-op's community solar array will likely continue to operate at its current site on our pole yard property through at least 2035, as we plan to retain or lease that part of the property from the future buyer as part of our sale terms. Our community solar array has a projected life of at least 20 years.



Bring the kids to MN Twins Baseball Clinic *Saturday, July 13 in Arlington*

Free Minnesota Youth Baseball Clinic for boys and girls ages six to thirteen at the Arlington Baseball Park on Saturday, July 13. The event will focus on hitting, fielding, and throwing skills.

**6-9 year-olds starting at 9:00 a.m.
10-13 year-olds starting at 10:30 a.m.**

Go to playballmn.com to register. Parents must sign a waiver before their child participates on July 13. Registering

and completing the waiver online will save you having to do paperwork the day of the baseball clinic.

Kids should bring a glove. Other equipment is provided. In the event of inclement weather, the clinic will be moved indoors to Sibley East High School.



MCPA office closed July 4 & 5

Over this year's long 4th of July weekend the Co-op's office will be closed Thursday, July 4 and Friday, July 5.

Crews will still respond to any outages and the Co-op's after-hours dispatch service will be taking your calls at 1-800-927-5685. They are available 24-hours a day. So if you have a power outage, please call.

We encourage all members to have a safe and enjoyable Independence Day.

In this issue...

Electric Riding Mowers..... 4

Heat Pumps VS
Air Conditioner 7

Tackling Tree Trimming 8

Official publication of



www.mcleodcoop.com

Like us on facebook

Heartland Security, subsidiary of your electric cooperative, celebrates 20 years!

Happy 20th Anniversary Heartland Security!

Hearthland Security was founded in January 1999 by nine electric co-ops. McLeod Co-op Power was one of those owners. Today, there are 13 co-op partner-owners.

At the time 80 percent of cooperative members surveyed thought security systems would be a valuable service for the cooperatives to offer. Only two percent of homes had security systems at the time. The cooperatives worked together to create Heartland Security Services, LLC — now known as Heartland Security — with a mission “to enrich the lives of our customers by protecting their families, homes and businesses with innovative technologies, quality equipment, skilled installation, caring service and trusted monitoring.”

Heartland Security offers home security, business security, alarm monitoring (typically for hog barns), medical alerts, camera systems, card access and panic buttons. Heartland Security also offers environmental sensors to protect your home or business from water, carbon monoxide, smoke, extreme temperatures and freezing pipes. In addition, Heartland Security can upgrade you to a doorbell camera where you can answer the door from your smartphone, even if you're not home.

Since Heartland Security began in 1999, it has continued to upgrade its technologies to offer customers the most reliable products and services to keep up with the market. At this point a Heartland Security system can serve as the hub to your smart home, helping you control your thermostat, lights, locks, garage doors and cameras — all from one app on your smartphone or tablet. Their alarm systems integrate with Amazon's Alexa, Google's Home and Apple smartwatches. You can add almost any kind of Z-wave device into your system from smart outlets to motorized window coverings.

Heartland Security has installed systems in schools, banks, golf courses, restaurants, bars, resorts, colleges, liquor stores, gas stations, city buildings, courthouses, art galleries and doctor's offices.



The Heartland Security employees.

You don't have to be a co-op member to get a security system or medical alert from Heartland Security, but McLeod Co-op Power members will receive a 10 percent discount on the base package when they purchase a system and \$1 off the monthly monitoring if they are a cooperative member. Co-op members who already own an account already receive the monitoring discount. Heartland Security also offers discounts to emergency responders, as well as active military and veterans (only one discount applies per account).

Heartland Security now has 23 full-time employees and eight part-time employees with sales representatives, alarm technicians and medical alert installers throughout their territory. The main office is located in Melrose. Locally, Vern Zimmer is the Heartland Security consultant for McLeod members.

Their International UL-listed response center, Wright-Hennepin International Response Center (WHIRC), is located in Rockford, Minnesota, and earned Five Diamond Certification by the Central Station Alarm Association in recognition of their employee training in emergency dispatch response and customer service. WHIRC is staffed by highly

trained dispatchers 24 hours-a-day, 7 days-a-week, 365 days-a-year who are ready to respond to any alarm.

“Because Heartland Security is cooperative-owned, we take care of our customers as it is the cooperative way,” said Guy Adams, Heartland Security's general manager. “Heartland Security takes pride in providing the best service possible to our customers. We have top-notch technicians, a knowledgeable sales team and caring office staff. All of our employees have biannual background checks and thousands of customers have trusted us to help them protect what matters most.”

“Our biggest referral source is word-of-mouth,” Adams added. “If you're happy with your service, the best compliment we can receive from you is your referral. For that we offer referral bonuses. If you recommend Heartland Security to someone and they purchase a new security system, you will receive \$40 cash or a \$40 credit on your account.”

Heartland Security also offers a free security analysis to anyone interested in their offerings. “Have a sales representative stop out to your location for a free, no-obligation visit and work with you to create a customized security solution,” Adams said. For more information about Heartland Security or for a free security analysis, call 888-264-6380 or visit us online at www.heartlandss.com.



Board of Directors

Directors are members of the cooperative and are elected to act in the best interests of the co-op with the same care that an ordinary prudent person in a like position would exercise under similar circumstances. Directors set policy, approve strategy and are charged with fiduciary responsibility of the cooperative. Directors do not

oversee day-to-day operation of McLeod Co-op Power. Administration of maintenance, electric service, and operations are the responsibility of employees and staff, under the direction of General Manager Carrie Buckley. Members with questions or concerns about service, billing, outages or other service-related matters should call 1-800-494-6272.

District 1 - Oria Brinkmeier, 320-485-2554

Hollywood Twp. in Carver Co., Winsted Twp. in McLeod Co., Victor, Woodland, & Franklin Twps. in Wright Co.

District 2 - Joe Griebie, Vice President 320-779-1101

Hassan Valley, Sumter & Rich Valley Twps. in McLeod Co.

District 3 - David Resch, 952-449-1793

Bergen, Helen, & Glencoe Twps. in McLeod Co.

District 4 - Doug Kirtz, Secretary-Treasurer dkirtz@mcleodcoop.com, 320-583-7673

Boon Lake, Brookfield, Osceola, Kingman, Preston

Lake, Hector, Melville, Bird Island, Palmyra, & Norfolk Twps. in Renville Co. & East Lake Lillian Twp. in Kandiyohi Co.

District 5 - Allan Duesterhoeft, 320-587-9134

Lynn & Acoma Twps. in McLeod Co. & Ellsworth Twp. in Meeker Co.

District 6 - Gary Burdorf, 507-964-5815

Penn Twp. in McLeod Co, New Auburn, Green Isle, Dryden & Arlington Twps. in Sibley Co.

District 7 - Randy Hlavka, GRE Representative rhlavka@mcleodcoop.com, 320-583-0037

Hutchinson & Hale Twps. in McLeod Co., Collinwood Twp. in Meeker Co.

District 8 - Keith Peterson, President kpeterson@mcleodcoop.com 320-583-0997

Collins & Round Grove Twps. in McLeod Co, Martinsburg, Bandon, & Wellington Twps. in Renville Co., Grafton, Moltke, Bismarck, Transit, & Alfsborg Twps. in Sibley Co.

District 9 - Susan Anderson, Asst. Secretary-Treasurer, 20valve90@gmail.com

Watertown, Camden, & Young America Twps. in Carver County

General Manager - Carrie Buckley cbuckley@mcleodcoop.com, 800-494-6272

McLeod Cooperative Power News

USPS 2220
Periodicals Postage Paid at
Hutchinson, MN
POSTMASTER: Send address
changes to
McLeod Cooperative Power News
P O Box 70, Glencoe, MN
55336-0070

The **McLeod Cooperative Power News** is published monthly for \$4.72 per year for members and \$8 per year for non-members by McLeod Cooperative Power Association
1231 Ford Ave. N., Glencoe, MN
55336-0070

Editor: Sue Pawelk

The McLeod Cooperative Power News is the official member publication of McLeod Coop Power Association and focuses on our members, programs and events.

All member story ideas and comments are welcome. Send to Sue Pawelk at the address shown.

Office Hours:

Monday - Friday
7:45 a.m. - 4:30 p.m.

**Phone: 320-864-3148,
1-800-494-6272
24-hour outage:
1-800-927-5685
Fax: 320-864-4850
Web site:
www.mcleodcoop.com**

Gopher State One Call 811 or
1-800-252-1166

McLeod Cooperative Power Association is an equal opportunity provider and employer.



Arlington Fire Chief John Zaske is shown with Co-op employee Bob Thomes. The Operation RoundUp donation will improve safety equipment at the Arlington Fire Department.

Operation RoundUp donates to Fire Department

The Arlington Fire Department was awarded a \$2,000 donation by McLeod Cooperative Power's Operation RoundUp Program. These funds are being used to replace fire fighters nomex hoods and structural gloves. The new equipment is designed to reduce the exposure to cancer-causing agents. This is a big safety need in the local fire departments.

As a member of the Co-op, you may choose to round up your electric bill each month to the nearest dollar and have that change donated to Operation RoundUp. If you do not already participate, just fill out the coupon on this page and mail it to the Co-op or include it with your next electric payment.



Peyton Jasken awarded scholarship

Peyton Jasken of rural Hutchinson is this year's recipient of the Co-op's Power Line Worker Scholarship. He will be attending M State Technical College in Wadena, Minnesota in the Line Worker Program. He will receive a \$500 scholarship from the Co-op to go towards his education.

Summary of Board Meeting Minutes Thursday, May 30, 2019

MCPA Board participated in training on Offensive Behavior. Employees had received training recently. The Board approved a policy on Offensive Behavior outlining how the Co-op will address inappropriate behavior. The Co-op has not experienced issues with offensive behavior, however, it is being proactive in educating employees and directors and having a policy in place.

The Line Superintendent gave the monthly Operations/Engineering Report. Inspection of work orders was completed by the Co-op's engineering firm. Electrical construction has been completed for the roundabout east of Glencoe. MCPA crews have been busy changing out reject poles and installing new services.

The 2020 Annual Meeting will be held on Tuesday, April 14 at the Hutchinson Event Center.

It has been 20 years since the Articles of Incorporation and Bylaws were last reviewed and updated. The MCPA Board approved creation of a Governance Subcommittee to review proposed language changes to the Articles of Incorporation and Bylaws. Four directors and one alternate were selected to serve on the committee and it was approved that they be paid a per diem of 50% of what they would receive for attending a meeting that is not a regular monthly board meeting. They will work with management and the Co-op's attorney on the project beginning in July. Any proposed changes to the Articles of Incorporation or Bylaws must be approved by a vote of the membership.

The Board reviewed the Grid Access Fee, as it applies to Rate 18. A member considering interconnection of distributed energy resources (DER) on this rate worked with management and now with the board on this issue. The Grid Access Fee methodology has been approved by the MN Public Utilities Commission (PUC). The PUC specifies the Co-op must collect the Grid Access Fee by Rate Class. When a member interconnects DER, the Grid Access Fee is used to collect that member's share of the system delivery costs, so they are not paid by members of other rate classes. Rural electric cooperatives are more likely to charge a Grid Access Fee than

larger utilities because there are fewer members per mile to pay for the system delivery costs. The Co-op will continue to work with the member on alternative solutions.

The IT Manager explained to the Board an issue we had with one meter-data collector and how our self-healing AMI system continued to report information to the Co-op via other collectors.

The Board went into Executive Session to discuss strategic business issues.

Finance Manager presented the Operating Statement and Balance Sheet for the month of April 2019 for review. Operating margins for the first four months of 2019 are at \$149,078. This is \$32,249 better than budgeted due to a lower cost of power and lower operating expenses in April.

The Audit Committee, which consists of two board members, reported on their review of the April expenditures. The following items were approved: April Financial Report on File for Audit, April General Fund Checks, Transfer of Patronage Capital & Refund of Patronage Capital to Estates, April New & Rescinded Memberships, Special Equipment Summary, and Resolution 2019-05-01 Retired Capital Credit — Gain Account 217-01.

General Manager reported on the Great River Energy (GRE) Member Manager's Group making good progress on the redesign of wholesale rates. The 2020 Demand Side Management rates were approved to be recommended to the GRE Board. The rates have a slight increase driven by marginal fuel rates.

There was discussion on having the Co-op's attorney in attendance at the Re-Organizational Meeting to act as the "election judge." This practice would allow the attorney to act as an objective party, to take notes and count the ballots, when the board elects its officers for the year.

Certain directors were approved to attend the MREA District 5 Meeting in Sleepy Eye, the MREA Energy Issues Summit in St. Cloud, the Board Chair Round Table Conference and Cooperative Network Sector Meeting. The newest elected director was approved to attend the MREA New Director Orientation.

School visits teach kids to be safe around electricity



Lineman Nick Tritz gives a student a chance to try on some of the safety gear worn by a line worker including insulated rubber gloves, rubber sleeves to protect arms and shoulders, a reflective safety vest, safety glasses, and a hard hat.



Lineman Ryan Schuette lets a student try to work with a small bolt or piece of metal while wearing insulated gloves. Students find it quite challenging to handle any small parts when wearing the protective gloves.

During April and May McLeod Co-op Power employees visited several schools, training students about electrical safety. Presentations were done for students at First Lutheran in Glencoe, St. Paul's Lutheran in Arlington, St. John's Lutheran in Norwood Young America, Immanuel Lutheran School in Gaylord, Sibley East in Gaylord, and Green Isle Community School. Just before students head out on summer break is a good time to remind students of the electrical safety rules that will protect them from harm.

Electric riding lawn mowers and zero-turns are finally here!

Cordless electric walk-behind mowers have been around for decades. Today there are over 50 different cordless electric models on the market. Most of them use interchangeable lithium batteries to provide enough run time to mow up to 1/2 acre on one charge.

It has been a long wait for electric riding mowers and zero-turn models to hit the turf. MTD currently has electric riding mowers for sale in the U.S. under the Cub Cadet brand. Ryobi and Weibang also sell models here. Hopefully soon, more manufacturers will join the market.

All-electric and hybrid riding mowers are much quieter than gas-powered lawn tractors. They do make some noise when the blades are engaged. Benefits of the electric rider models are no emissions, no noise pollution, no fuel to transport in your car, no maintenance except changing blades, and no starting issues.

Residential Electric Mowers



If you don't mow more than an hour or so at a time, the Cub Cadet RZT S Zero is a wonderful mower. Cub Cadet has taken their steering wheel zero-turn and replaced the belts, pulleys, transmissions and gas engine with electric motors and batteries. The RZTS Zero has been on the market for over 3 years and is proving to be very reliable.

Cub Cadet's zero-turn has a state-of-the-art drive system. Even though this mower uses a deep discharge battery instead of lithium-ion, it uses the latest technology to make the best use of the battery's capacity. The 48-volt floating ground system uses 4 of the latest 3-phase brushless DC motors for propulsion and for the deck. Two motors for the deck and two motors for the all steel gear transmissions in the rear. Each motor's speed is precisely controlled. It incorporates a regenerative circuit for downhill braking that actually charges the battery.

The RZT S Zero is designed to handle slopes as well as flat mowing surfaces. It uses steered wheels in front (instead of caster wheels) so that you have full control over the mower all the time. It will handle 15 degree or less slopes just as well as your lawn tractor. The weight of the batteries is centered over the rear wheels to give you the best traction possible. The steering wheel and foot-controlled speed controller make it as easy to drive as your car.

Cub Cadet's best 42-inch deck feature: If one or both blades encounter heavy thick grass the speed sensor in the motor automatically keeps the blade at a constant RPM. Also, if you are mowing light grass the electronic controllers reduce the current to the motors saving the battery and extending the mowing time. Note: When you first get your new RZT S it may not give you the full hour of run time. The brand new batteries take about 10 charging cycles to reach their full capacity



Ryobi currently has two electric zero-turns and two electric riders on the market. The riders have been on the market for over two years. The RYOBI 48V Zero Turn Electric Riding Mower is powered by 75 Ah or 100 Ah Batteries and 4 High-Powered Brushless Motors. This mower can cut 2-3 acres on a single charge.

- Battery Operated: fully electric and 0 emissions
- Up to 3 acres of mowing per charge (2.25 acres with 75 AH batteries)
- 4 high powered brushless motors
- 42 in. heavy-duty steel deck with 2 precision-cut steel blades
- 12 position manual deck adjustment
- Side discharge, mulching or bagging capable (bagger accessory available online only)
- 1.5 in. to 4.5 in. adjustable cutting height
- Low maintenance: no belts, spark plugs, or filters
- Battery operated: quiet cutting, no gas, fumes, charge and go
- Control panel: battery level indicator, unit hour meter, USB charging
- Easy access rear charging port
- Charges through a standard 120-Volt outlet
- Includes towing hitch and tow assembly hardware

The Ryobi RM480E has been on the market for two years and features a proven battery and propulsion system that will give you years of use. No gas, no oil changes, no real maintenance besides blades and cleaning. This mower uses standard deep discharge batteries for long mowing time and long battery life.

- Battery Operated: fully electric and 0 emissions
- 3 Brushless motors for superior power and performance
- Up to 2 hours of run time or 2 acres of mowing
- Environmentally friendly.
- Virtually maintenance free.
- Super quiet. Intuitive operation.

With the RM480E, you get all the benefits of owning a fully electric riding lawn mower without sacrificing power, performance or features.

Weibang makes a rear engine electric rider. It is a 30 in. deck on a 72-Volt lithium-ion battery-powered rear engine riding mower. This "little" rider has actually been around for quite a while now and has recently been offered in the U.S. It's a great mower for smaller 1/3 to 3/4 acre yards. The Lithium-ion battery will mow up to 2 hours on a charge. It is light enough to tip it up on the back so you can store it upright, change blades and clean the deck.

All electrics like the RZT S Zero that you plug-in and charge are not without cost because you still have to pay for the electricity, but it is at significant savings over operating a gas-powered rider. Of course, the actual cost savings depends on your local electricity rates and the current price of fuel. In addition to the charging cost, conventional deep discharge batteries like the four in the Cub Cadet Zero have an expected life of around 4 to 6 years or 400-600 cycles and cost around \$200 each to replace. In comparison, the Mean Green lithium batteries below have an expected life of around 1500 cycles or 10-15 years

Commercial Electric Mowers



Mean Green Mowers has a complete line of lithium-powered commercial riding, stand-on, walk-behind and trimming mowers. They feature interchangeable high-capacity battery packs that can quickly be exchanged to power their mowers all day long. This has state-of-the-art batteries, chargers, and electronics.

There is no maintenance on these mowers other than occasional inspections for safety and a few grease fittings. No seasonal maintenance like oil, spark plugs, oil filters, air filters, hydraulic fluid, etc to purchase and store. Best of all, there is NO gas to purchase and haul around in your trunk! No storage cans of stale fuel sitting around your garage! Commercial owners are seeing savings of hundreds of dollars per month on parts and fuel alone, not to mention the high labor costs to accomplish the maintenance. The additional cost of the batteries quickly is offset by maintenance and operating savings over gas-powered equipment.

The mowers themselves are true commercial grade mowers and cost about the same as an equivalent commercial gas-powered zero-turn. The battery packs and chargers are additional.

What you need to know before installing a programmable thermostat

In many applications, a programmable or smart thermostat can save you significant energy by reducing cooling or heating costs. There are some heating/cooling systems that do not work so well with them. Please do a little homework first to guarantee your satisfaction and comfort.



If you are considering replacing your home's thermostat for heating and cooling — whether it is a smart thermostat or a programmable thermostat that allows you to have setbacks — please make sure to have a conversation with a technician at your electric co-op or with your heating and cooling contractor first. Your home's comfort and efficiency could be compromised unknowingly in your efforts to install what you have heard is a great energy efficiency tool.

While setback thermostats are generally known for saving energy, there are some heating and cooling systems that do not work well using programmable setbacks. It is very likely you may not get the energy savings you hoped for when using a setback stat on heat pumps, in-floor or steam heating, electric

plenum heaters and boilers, and some high efficiency gas furnaces.

Most energy experts do not recommend thermostat setbacks for houses that are running heat pumps. Setting back the thermostat on these systems can cause the heat pump to run inefficiently, cancelling out any benefits previously achieved. Electric plenum heaters, boilers and even some high efficiency gas units run at a lower operating temperature for a longer run-time to attain high efficiencies. Trying to operate these systems with a setback thermostat could result in higher operating costs and decreased comfort in the home.

Setbacks are also more difficult for houses with in-floor or steam heating. The difficulties with these systems is their slow response time. Reaching the desired temperature with these systems may take several hours.

Members with questions on whether their system is compatible with using thermostat setbacks can call the energy experts at McLeod Co-op Power. Especially members participating in cycled cooling, Dual Fuel or heat storage control programs are encouraged to have a conversation with the Co-op before programming in setbacks to their thermostat.

Get your FREE MN State Parks map



Touchstone Energy Cooperatives have again partnered with the State of Minnesota Parks and Trails on sponsorship and distribution of the 2019-20 Map and Visitor Guide. Free maps are available to MCPA members in the Co-op office.

The colorful maps feature all of Minnesota's trails and parks on the map, a list of camping, lodging, and recreation facilities at each park, and a list of online resources to check out before you visit a state park. Minnesota Touchstone Energy

Cooperatives have been marketing partners with the state parks for many years and work together to promote use of the parks to our members.

Marathon®
WATER HEATERS

- Tough exterior resists dents, scratches and rust.
- Free of ozone-depleting CFCs and HCFCs.
- No-leak warranty for as long as you own your home.
- 6-year warranty on thermostat and elements, including labor.



Meet the people behind your power

Rural electric co-ops are locally owned and operated by the very members they serve, which means the co-op is always looking out for you. Member-ownership also guarantees every member has a voice in co-op business decisions. How the co-op is run is up to you.

Nick Tritz
Lineman

McLeod Co-op Power member
Muskie's Inc. conservation group

McLEOD CO-OP POWER

EnergyWise online store now open

Check out the new energy efficiency information and online store to order high efficiency LED bulbs, low-flow shower heads, power strips, programmable thermostats, and more. You can link there from McLeod Co-op Power's website or go direct to www.energywisemn.com. Most items qualify for an instant energy conservation rebate.

ENERGY WISE MN

VISIT OUR NEW ONLINE STORE!

Purchase discounted smart thermostats, LEDs, and more.

April 2019 Outage Summary

There were 84 outages in April. Out of those outages, 17 were planned outages and 45 were due to The April 11 & 12 ice/snow storm. The snow storm also caused the majority of outage time for members.

Most outages affect only one or two members. They are frequently caused by small animals, trees in the line, equipment failure, or motor vehicle/machinery accidents. Larger outages affecting hundreds of members at a time are usually caused by transmission outages, storms, equipment failure to substation equipment, or accidents. Restoration time on weekend and evening outages, when line crews are called out from home, usually take a little longer to get back on than outages when crews are already out working on the project.

MCPA line workers put safety into practice



Lineman Ryan Schuette helps a fellow lineman out of a bucket during a simulated emergency drill.

On May 21, MCPA line workers participated in bucket rescue drills, practiced pole top rescue skills, and reviewed May Day radio emergency protocol. Line workers do this annual training to keep their emergency skills fresh and ready to be put into practice.



Lineman Nathan Kelzer practices a pole top rescue drill.



AC tune-ups eligible for credit once every two years

Schedule an air conditioning tune-up with your contractor today.

Just schedule a tune-up of your central air conditioner or air source heat pump (unit must be at least five years old and in working condition to qualify) and when your licensed professional HVAC contractor performs the service work, have them complete the rebate coupon. Send the completed rebate form to the Cooperative with a copy of the contractor's invoice. This tune up must include the items on the coupon. After the Co-op receives your documentation, we will credit your electric bill \$25 within 4-6 weeks.

Air Conditioner/Heat Pump Check List

Eligible for credit a maximum of once every 24 months

Owner _____
Acct. # _____
Address _____
Location # _____
Phone # _____
Company doing Tune-Up _____
Technician's Name _____
Company Phone # _____

CHECK LIST

Brand Name _____
Model # _____
Serial # _____
Tons/BTU Rating _____ SEER Rating _____

- ☐ Clean Outdoor Unit
- ☐ Clean and Inspect "A" Coil
- ☐ Check Blower Belt
- ☐ Compressor Motor Amp Reading Check
- ☐ Compressor Amp Reading Check
- ☐ Blower & Oil
- ☐ Blower Motor Amp Reading Check
- ☐ Check Filter
- ☐ Check Refrigerant Level & Pressure
- ☐ Blow Out Drain Line
- ☐ Visual Inspection of Cooling System

Recommendations _____
Technician Signature _____
Date _____

MCPA News Ads — Free want ad service for members

Please limit your ad to nine words. Use the coupon printed here or available at McLeod Cooperative's front desk to submit your ad. Ads will be printed for one month only. Please submit a new ad if you want it published more than one month. Include your name and address, which will be used for identification purposes only. Ads must be received by June 28 to be included in the July issue. Thank you!

Please run this ad in the next MCPA News

Name: _____
Address: _____
Telephone number: _____

Remember to limit your ad to nine words!

1 _____ 2 _____ 3 _____
4 _____ 5 _____ 6 _____
7 _____ 8 _____ 9 _____

Clip and Send to: McLeod Cooperative Power, ATTN: Classified Ads
P.O. Box 70, Glencoe, MN 55336

Please check ad category

☐ Giveaway
☐ For Rent
☐ For Sale
☐ Wanted

For Sale Miscellaneous

- OMC Mustang 1200 loader w/2 buckets. 320-587-7746
- Playground/jungle gym, two towers, multiple play stations. 507-326-5102
- 1970's pickup camper. 320-583-7368
- Women's Harley Davidson boots 7 1/2. 320-583-7368
- 2006 Chevy Impala 175,000, needs transmission work, engine good. \$2,500/bo. 320-485-2246
- Electric lift recliner, small beige, new quality. \$500/obo. 612-356-8886
- Two new 50-gallon square rain barrels. \$25/each. 320-395-2873
- 6 1/2 ft 3pt garden disk. Almost new. \$550. 320-395-2873
- Two Roman shade blinds. New Blueberry 38in X 67in. \$30. 320-420-2649
- Sentry floor safe, new, never used. 320-587-4681
- Steel fence posts. 320-864-4496

- Large setting beautiful china. Best Offer. 320-864-3282

For Sale Farm

- Dura-built round bale feeder. 507-964-5683
- Loftness 9ft double auger snowblower. 507-964-5683
- Spring tooth drag, 4 section foldup evener. 320-587-4681
- NH 269 baler with thrower. 507-326-3968
- 40ft bale conveyor on wheels w/motor. 320-587-9238

Wanted

- JD combine 3300 clean/running, gas/diesel, 2-roll head. 320-223-5268

Giveaway

- Cats indoor/outdoor litterbox trained, 9 months old. 320-587-7443

Disclaimer – McLeod Cooperative Power Association (MCPA) assumes no liability for the content of, or reply to, any item posted. The party posting any advertisement assumes complete liability for the content of, and all replies to, any advertisement and for any claims against MCPA as a result thereof, and agrees to indemnify and hold MCPA harmless from all costs, expenses, liabilities and damages resulting from, or caused by, any advertisement or reply thereto.

Get year-round comfort. Get top-notch efficiency.

GET AN AIR-SOURCE HEAT PUMP



Air Conditioner

Cooling during warm summer days

Absorbs inside heat and expels it from your home, then creates chilled air to push back into your home

High efficiency central air units are comparable to Air-Source Heat Pumps in summer

- Smaller upfront cost, but does not offer heating
- Not eligible for rebates

VS



Up to \$800
rebate on
16+ SEER
models

Air-Source Heat Pump

CAN I USE IT
YEAR-ROUND?

Heating and cooling through every season

IS IT VERSATILE?

Works like an air conditioner in the summer, but offers the versatility of the reverse process to heat your home the other three seasons

IS IT EFFICIENT?

Super energy efficient, as the unit moves both cooled and heated air throughout the home

CAN I SAVE MONEY?

- Large rebates available for unit installation
- Sustained savings through energy efficiency

Bonus Winter Benefit:

Electric-Air Source Heat Pump heating is much more efficient than fuel heat technology, delivering up to three times more energy than the electricity it uses. Reduces annual gas or fuel oil consumption.

PUMP UP YOUR SAVINGS WITH AN AIR-SOURCE HEAT PUMP!

NO AIR DUCTS IN YOUR HOME?
NO PROBLEM!

\$300 REBATE ON DUCTLESS AIR-SOURCE HEAT PUMP SYSTEMS

June 4 storm caused widespread outages

A thunderstorm with high winds snapped off some power poles and caused many trees to go down over power lines on the afternoon of Tuesday, June 4. Storms moved across the Co-op's service territory causing outages across McLeod, Sibley and Renville Counties. By later afternoon, crews were responding to over 800 members out of power across 16 townships. Line crews worked through the night and by approximately 4 AM had all accounts either back on or they had temporary power.

Severe weather can put us in the dark quickly when it damages the distribution system that delivers our power. Sometimes it can take a long time, even days, to restore everyone, when a storm causes widespread damage. **The Co-op recommends that any farmer with livestock requiring water, ventilation, or milking should never be without a generator backup. It should be sized to do the critical chores you need to get done to care for your animals.**

McLeod Co-op Power sells and installs automatic generators of all sizes for farms, homes, or businesses. Our technicians can provide you with a cost estimate on a Briggs & Stratton automatic generator system to meet your needs, if you do not already have a generator. Call 1-800-494-6272 for details.



**ALWAYS
CALL
BEFORE YOU
DIG**

Call 811

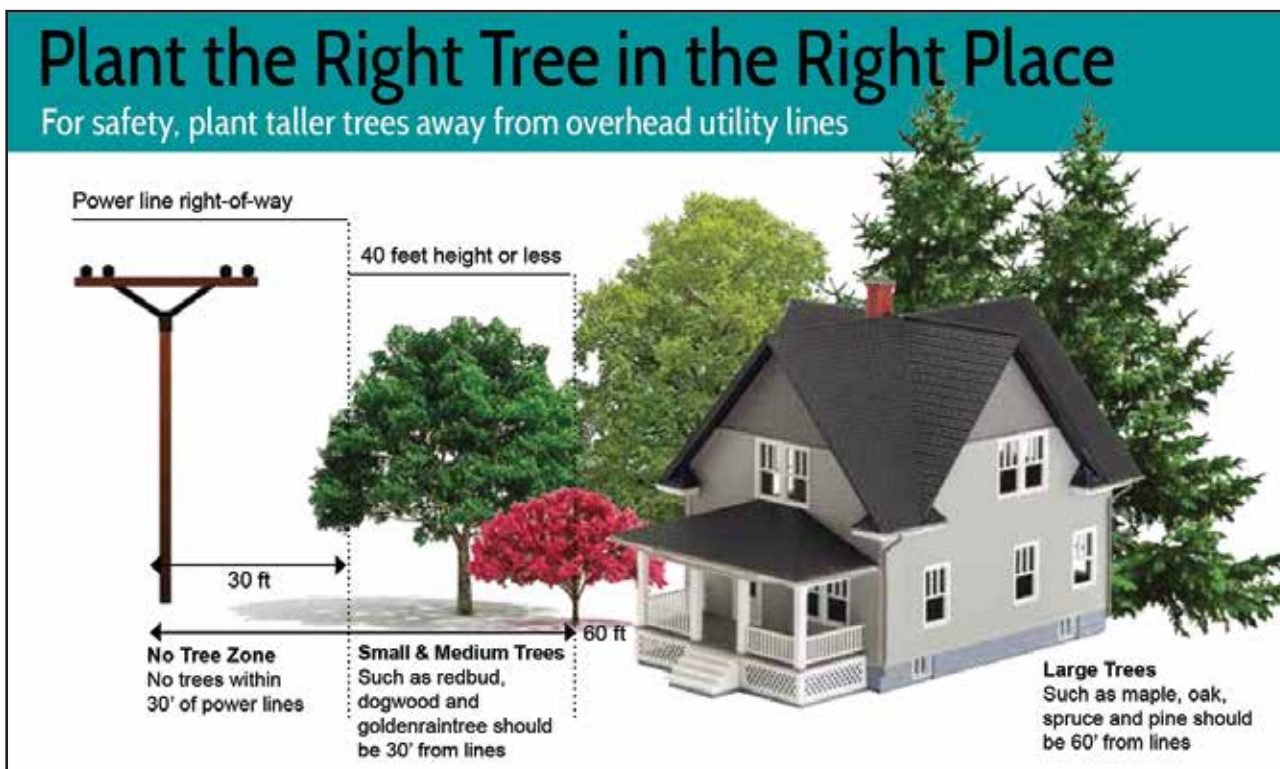
Tree Clearing & Trimming — *Tackling the Root Cause of Outages is Expensive*

- Trees are one of the main causes of power outages, especially during storms.
- Right-of-way clearing and tree trimming cost the Co-op approximately \$500,000 a year.
- That costs the average member about \$73 a year for clearing and tree trimming.
- There are no trees under a power line when we build one, but several years later we see people have planted trees beneath the line.
- Birds, animals, and trees themselves spread seeds and plant new tree seedlings under or near overhead power lines.
- If the Co-op reduces right-of-way clearing, outages will increase.
- If the Co-op allows trees to grow into power lines, it will increase line losses and can pose a safety issue.

WHAT IS THE SOLUTION?

The solution is not an easy one as most of us like trees for the environmental, privacy, and aesthetic benefits they provide. The Co-op likes trees so long as they are not jeopardizing power lines.

- The Co-op has been replacing overhead with underground lines when it is feasible and cost-effective. The Co-op includes a few underground conversion projects in its work plan each year. However, it would take millions of dollars every year for many, many years to replace all 1,500 miles of overhead lines on our system with underground conductor, and it is not a cost-effective alternative considering the existing lines are working well and have another 30-50 years of projected life. That would raise rates to unacceptable levels.



- Members allowing the Co-op's tree contractor to trim back all foliage the full 15-foot right-of-way on both sides of Co-op lines would be helpful.
- Members allowing complete removal of trees under or close to lines would be even better, as we would not have to trim the same trees repeatedly every few years.
- **No tree planting beneath power lines or within the distance range shown on the diagram is CRITICAL to help the Co-op contain future tree trimming costs.**
- Allowing the Co-op to spray under power lines before seedlings become trees would help.
- Most new services and line extensions today are underground, which helps prevent future tree trimming.

McLeod Co-op Power is here to provide you with safe and reliable power. We have seen how important right-of-way clearing can be to keep your lights on when storms roll through. The cooperation of our members is key to helping keep trees out of lines and containing tree trimming expenses.

The Co-op will not trim or remove trees that are leaning away from power lines or are not affecting our primary lines. We also cannot remove trees over structures or sewers. For trees that the Co-op cannot remove or trim, you should contact an independent tree trimming/removal contractor. The Co-op will work with members and drop a power line during regular business hours at no charge so that the member's independent tree contractor can remove the tree safely, however, members need to schedule this work with the Co-op (preferably two weeks in advance). To help contain the spread of diseased trees, the coop cannot chip or haul any dead trees from premises.

Don't judge all cooperatives by the actions of one

McLeod Co-op Power is operated with integrity and high ethical standards

In the Star Tribune's Sunday, June 9 issue, Crow Wing Power, an electric cooperative in Brainerd, Minnesota, was again under scrutiny. Last summer it was regarding ownership of a mineral mine. This time it is regarding the 2006 sale of their subsidiary, a for-profit technologies company, and associated management and board bonuses paid as part of that sale. The controversy stems from the non-disclosure of those bonuses which were not shared with their Co-op membership until this past month. An investigation into these issues has apparently been undertaken by the State of Minnesota Attorney General.

We only know what was reported in the paper, and we can only draw the same conclusion as any

reader might, that transparency to the members was absent. We wanted to assure you that McLeod Co-op Power operates under a mantra of accountability to its members. Historically, McLeod Co-op Power has made certain that all financial gains are used for the benefit of our electric members. Going forward, we plan to continue to operate with integrity and high ethical standards.

We feel we have always "walked the talk" when it comes to transparency, but we are constantly trying to improve our performance and are always open to a better idea. To that end, McLeod Co-op Power made a significant effort in the past year to make information more accessible to members. We now publish a summary of the

monthly board meeting minutes in the Co-op newsletter. Members can now access the Articles of Incorporation and Bylaws, the Annual Report, board meeting dates, instructions on how to be a director candidate or how to vote in an election, director contact information, and rates and fees, on the Co-op website at www.mcleodcoop.com.

The Co-op's Board of Directors and management monitor our subsidiary businesses to make sure they bring sufficient value to McLeod Co-op members. Our diversified services yield a modest revenue stream and are designed to bring beneficial services to our members that will improve their quality of life.