

McLeod Cooperative Power NEWS

May 2018



**Anything You Can Do
I Can Do Better!**

No You Can't!

Yes I Can!

It's the best of both worlds. ASHPs provide home cooling and supplemental heating with 72% less electricity than conventional air conditioners and furnaces and you can switch between cooling and heating directly from the thermostat, putting you in complete control.

ACT NOW and get DOUBLE or TRIPLE the rebate on an ASHP
based on your SEER rating and while rebate dollars are available

**Call McLeod Co-op Power for details
320-864-3148 or 1-800-494-6272.**

Air Source Heat Pump Rebate

14.5 SEER.....	\$1,000
15 SEER.....	\$1,250
16 SEER.....	\$2,000

Ductless Air Source Heat Pump Rebate

**Fossil fuel
primary heat \$450**

**Electric
Primary heat \$750**

**Installation must be completed between
May 1 and July 31, 2018 by a certified
"Quality Installation" contractor listed
on the 2018 "QI" list on hvacrededucation.net
website (link on www.mcleodcoop.com).
Rebates distributed on first come, first
serve basis when rebate form is received
from installing contractor, and while
supply lasts.**

Plan to have your children or grandchildren attend MN Twins youth baseball clinic



The Minnesota Twins and Great River Energy, are sponsoring a 2018 Play Ball! Youth Clinic on Saturday, July 14 in Arlington. The event will be hosted by McLeod Co-op Power and the Arlington Baseball Association. The event is free to participants.



**10 a.m. session for 6-9 year old boys and girls
11:30 a.m. session for 10-13 year old boys and girls
at the Arlington Baseball Park
on July 14.**

Equipment is provided except participants should bring a glove.
For more details visit www.playballmn.com

MCPA recognized as 50-year Minnesota FFA donor



The Minnesota FFA Foundation honored McLeod Co-op Power for 50 consecutive years of support for the FFA youth program. The Co-op's General Manager, Carrie Buckley, accepted a plaque at the FFA Foundation's 89th convention/honors reception on April 23 recognizing our Cooperative's long-time support of the Future Farmers of America program. Spencer Flood, State FFA Treasurer, posed with MCPA Manager Carre Buckley. Other long-term donors recognized were Land O' Lakes Foundation and CHS Foundation for 60 years of support.

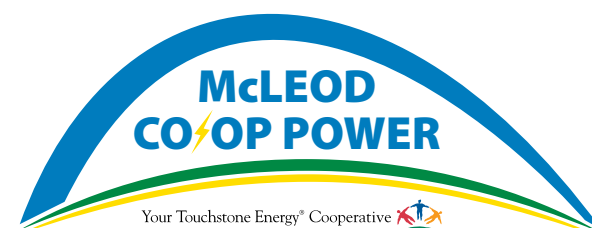
In this issue...

How to safely run a
portable generator 3

LED bulb rebates..... 8

Flourescent bulb
recycling program..... 8

Official publication of



www.mcleodcoop.com Like us on facebook

Manager's Message — by Carrie L. Buckley, General Manager



“Safety” is a universal word that is mentioned often and used loosely

Communities large and small as well as companies across all industries are committed to safety. Sports leagues, at every level, take safety seriously. Unfortunately, when it really counts, steps to keep the public, workers, athletes and loved ones safe are often ignored in the interest of expediency or convenience.

However, safety is a serious issue, especially when it comes to electrical safety. For McLeod Co-op Power, it's the number one priority. This is not empty talk. Over time, McLeod Co-op Power has created a culture of safety by putting our employees' safety and that of the community above all else. At its essence, McLeod Co-op Power's mission is to provide safe, affordable and reliable electricity to its member-owners. At the end of the day, we strive to deliver affordable and reliable electricity to our member-owners, but equally important, we want to return our workers home safely to their loved ones. To do this requires ongoing focus, dedication and vigilance.

Following leading national safety standards

Working with electricity is an inherently dangerous job, especially for line workers. Our Co-op has a safety team whose focus is keeping employees and the community safe around electricity. We established and follow safety protocols based on leading national safety practices for the utility industry. We require our line workers to wear specialized equipment when working next to or with power lines. There are specific protocols that our line workers follow when dealing with electricity. Our safety team has regular meetings where they discuss upcoming projects from a safety perspective. They monitor and track near-misses of accidents in order to understand them, share “lessons learned” and improve in the future.

As importantly, we encourage all of our crews to speak up and hold each other accountable for safety. By cultivating a culture of openness and transparency, we promote problem-solving with regard to safety, rather than defaulting to a blame game. We examine the information

and data gleaned from near-misses and accident reports to discern patterns and use safety metrics to improve in those areas where we have fallen short. As appropriate, we brief contractors on our safety protocols and set expectations for their engagement.

Keeping the community safe

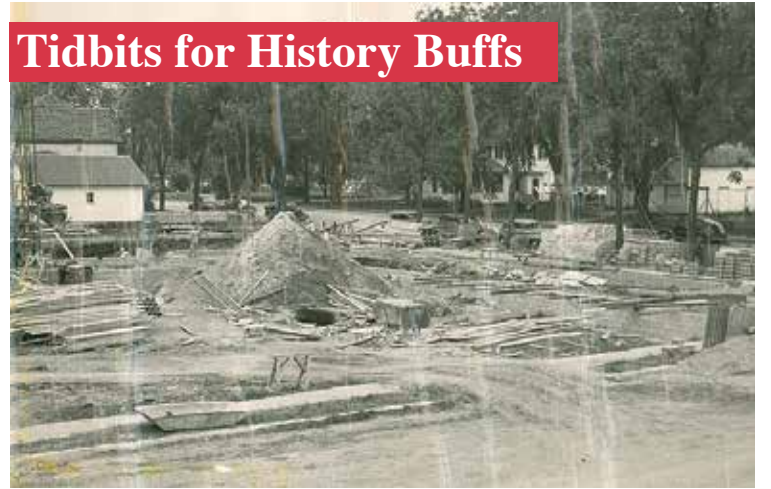
Because we live and work in the community we serve, we care about our neighbors. McLeod Co-op Power conducts electrical safety demonstrations in schools and for community events. We also are in contact with local fire departments/local responders and provide them with resources needed to train new recruits and do refresher training should they be faced with working on or near energized lines.

May is National Electrical Safety Month. According to the Electrical Safety Foundation, each year thousands of people in the United States are critically injured and electrocuted as a result of electrical fires, accidents and electrocution in their own homes. Many of these accidents are preventable. There is much you can do to keep yourself and your community safe around electricity. McLeod Co-op Power shares important safety reminders with the public through the Co-op's newsletter, website, Facebook posts, and radio/newspaper ads to help prevent accidents.

Don't attempt electrical DIY projects or overload your outlets. Report downed power lines, unlocked substations or pad-mount transformers that look amiss. Contact McLeod Co-op Power for additional electrical safety tips. If you would like us to provide a safety demonstration at your school or community event, please contact Debbie Ebert at 320-864-3148. Be mindful when it comes to electrical safety. Pause and take the extra time to plug into safety.

*Proud to keep your lights on,
Carrie*

Tidbits for History Buffs



The site of the Co-op's current home, at the corner of Highway 22 and Ford Avenue in Glencoe, is shown during initial construction in 1949. A massive black walnut tree was removed from the site during excavation and used to make the two board room tables still in use today. Melvin ZumHofe, a Glencoe contractor, constructed the building for \$134,500. It included a 126 x 30 ft. office, a 117 x 76 ft. garage, and a 40 x 60 metal warehouse.

The MCPA office will be closed Monday, May 28 in observance of Memorial Day.
Payments will be due in the office on Tues., May 29.



To report a power outage, you may contact us at 1-800-927-5685.

Board of Directors

District 1 - Oria Brinkmeier, 320-485-2554

Hollywood Twp. in Carver Co., Winsted Twp. in McLeod Co., Victor, Woodland, & Franklin Twps. in Wright Co.

District 2 - Joe Griebie, Vice President, 320-779-1101

Hassan Valley, Sumter & Rich Valley Twps. in McLeod Co.

District 3 - David Resch, 952-449-1793

Bergen, Helen, & Glencoe Twps. in McLeod Co.

District 4 - Doug Kirtz, Secretary-Treasurer

dkirtz@mcleodcoop.com

Boon Lake, Brookfield, Osceola, Kingman, Preston Lake, Hector, Melville, Bird Island, Palmyra, & Norfolk Twps. in Renville Co. & East Lake Lillian Twp. in Kandiyohi Co.

District 5 - Allan Duesterhoeft, 320-587-9134

Lynn & Acoma Twps. in McLeod Co. & Ellsworth Twp. in Meeker Co.

District 6 - Gary Burdorf, 507-964-5815

Penn Twp. in McLeod Co, New Auburn, Green Isle, Dryden & Arlington Twps. in Sibley Co.

District 7 - Randy Hlavka, GRE Representative

rhlavka@mcleodcoop.com

Hutchinson & Hale Twps. in McLeod Co., Collinwood Twp. in Meeker Co.

District 8 - Keith Peterson, President

kpeterson@mcleodcoop.com

Collins & Round Grove Twps. in McLeod Co, Martinsburg, Bandon, & Wellington Twps. in Renville Co., Grafton, Moltke, Bismarck, Transit, & Alfsborg Twps. in Sibley Co.

District 9 - Gerald Roepke, Asst. Secretary-Treasurer 952-353-2153

Watertown, Camden, & Young America Twps. in Carver County

McLeod Cooperative Power News

USPS 2220

Periodicals Postage Paid at Hutchinson, MN
POSTMASTER: Send address changes to
McLeod Cooperative Power News
P O Box 70, Glencoe, MN 55336-0070

The **McLeod Cooperative Power News** is published monthly for \$5.05 per year for members and \$8 per year for non-members by McLeod Cooperative Power Association 1231 Ford Ave. N., Glencoe, MN 55336-0070

Editor: Sue Pawelk
General Manager: Carrie L. Buckley
cbuckley@mcleodcoop.com

The McLeod Cooperative Power News is the official member publication of McLeod Coop Power Association and focuses on our members, programs and events.

All member story ideas and comments are welcome.
Send to Sue Pawelk at the address shown.

Office Hours:

Monday - Friday
7:45 a.m. - 4:30 p.m.

Phone: 320-864-3148

1-800-494-6272

24-hour outage: 1-800-927-5685

Fax: 320-864-4850

Web site: www.mcleodcoop.com

Gopher State One Call 811 or 1-800-252-1166

McLeod Cooperative Power Association is an equal opportunity provider and employer.



Helpful farm safety tips that can save your life

Please share with your family and your seasonal farm workers

- To prevent electrocution, make sure farm equipment (including planter arms and sprayers) safely clear overhead power lines. Keep a minimum of 10-foot distance from power lines in all directions.
- Consult with your electric cooperative and electrician about moving or burying overhead lines around buildings or busy pathways. If building a new farm structure or grain bin, consult with your cooperative for information on minimum clearances and the location of overhead lines.
- Keep a safe distance from power poles and guy wires when working the land or planting crops. Contact 911 immediately if your equipment comes in contact with a power line. Keep others away and remain calm. DO NOT try to exit the machinery or touch someone who has had electrical contact. You NEVER want to touch the ground and energized machinery at the same time! If you must exit your equipment for life-threatening reasons — jump out and away from the machinery, making sure to land with your feet together and touching.

Then shuffle at least three tractor lengths away with your feet touching. NEVER attempt to get back into or touch machinery that is in contact with a power line.

- If you come into contact with a guy wire or power pole (even if there are no power lines that have come down), contact the Co-op right away. Don't try to fix it yourself. Leave that to the experts.
- Water, dust and farming often go hand-in-hand. Install waterproof and dustproof electrical boxes and outlets at the farm.
- Make sure your family members and seasonal workers are all educated to stay safe on the farm. Each worker should be aware of the dangers and proper safety procedures.
- If a standby generator is used, it must be connected to the farm's wiring system through an approved transfer switch. The switch disconnects the farm's electrical system from the cooperative's lines during an outage and prevents the backfeed of power — keeping linemen safe from the risk of electrocution.

How to safely run a portable generator

Nobody likes being left in the dark. Using the right backup power can help make your home more comfortable and safer during a power outage. A small source of backup power can save a freezer full of food, keep lights on and charge phones until the power comes back on.



feed back onto the grid, harming utility workers who are trying to restore power. The safest way to use a portable generator is to plug directly into the unit.

When the time comes, move the generator to a dry, level outdoor space to start it. Plug loads directly into the generator using short,

heavy-duty extension cords to minimize the chance of the cords overheating. Always let the generator cool before refueling.

Portable generators come in a variety of sizes, but one of the easiest to manage is in the 3,500 to 5,000 watt range. They're simple to operate, but you want to pay close attention to a few things:

- Always operate a gas generator outdoors, instead of indoors or in your garage, because of deadly carbon monoxide build up.
- Never operate a generator in standing water to avoid electric shock.
- Remember that parts of the generator get very hot during operation.

Proper maintenance is important. Have your generator serviced annually and keep plenty of fuel and oil on hand to be sure it's ready when you need it. While it's best to store a generator empty, you can use a fuel stabilizer to leave fuel in it for up to 12 months. Run your generator once a month to keep it in operating condition, and change the filter once a year.

For convenience, it's possible to have your generator wired directly into your electrical panel. This should only be done by a licensed electrician, and it requires a special disconnect switch. Without the switch, the generator can

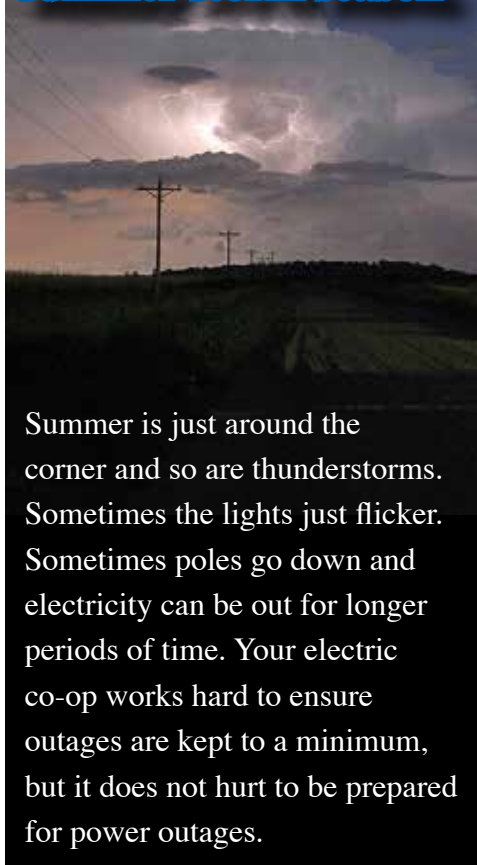
If you are not interested in doing the set up, operation and regular maintenance of a portable generator yourself, there is always the automatic generator option. An automatic generator will start when the power goes out, even if you are not home. It will provide electricity to most of your home's appliances and it will automatically turn off after the Co-op power is restored.

McLeod Co-op Power sells both automatic Briggs & Stratton generators 12 kW to 200 kW and smaller portable generators and inverters. The Co-op can assist members in determining what system would be best to meet their personal needs. Automatic generators are installed by the Co-op and regular maintenance/service is available through the Co-op also.

ACT NOW!

\$200 VISA gift card offer for Briggs & Stratton automatic generator 12kW to 20 kW systems purchased before May 31, 2018 from McLeod Co-op Power. System must be installed by July 31, 2018. Limit one per consumer.

Be prepared for summer storm season



Summer is just around the corner and so are thunderstorms. Sometimes the lights just flicker. Sometimes poles go down and electricity can be out for longer periods of time. Your electric co-op works hard to ensure outages are kept to a minimum, but it does not hurt to be prepared for power outages.

Follow these tips:

1. Do your neighbors still have power? If they do, check your own fuses or breakers. Replacing a fuse or resetting a breaker may restore your power. If the problem is not in your home or you can see your neighbors are also in the dark, call your electric Cooperative at 1-800-927-5685. They will dispatch a crew to take care of the outage. (We recommend having the Co-op's outage # programmed into your cell phone or have a magnet with the Co-op's outage # on your refrigerator so the number is always handy. Call to request a magnet if you need one).
2. While the power is out, unplug things like microwaves, TVs, and computers, and turn air conditioners off. This will help eliminate damage to them from a voltage surge when power is restored. Waiting a few minutes before turning these units back on after power is restored, reduces demand on the distribution system and protects your appliances. You may want to leave one light on during an outage to let you know when power is restored.
3. If you use a standby generator, make sure it is properly wired and installed with a transfer switch. If a generator is not

properly installed, it could back-feed to the power lines and injure the line crew working on the outage.

4. To make power outages easier and more tolerable keep the following items on hand:

- Flashlights
- Battery-operated radio
- Basic first aid supplies
- Baby supplies if an infant lives in the home
- A small supply of drinking water and food
- Extra batteries for flashlights and radio
- Candles and matches

5. Check your basement periodically for flooding. A portable, gasoline-powered pump or a battery-back up sump pump can be used if a power outage renders your unit inoperable. Never wade into a flooded basement unless the electricity supplying power to basement appliances and outlets has been disconnected.

6. Never go near downed power lines. That is a job for line crews.

7. Keep freezers and refrigerators closed to keep food fresh longer. Wrap blankets around the appliances to provide extra insulation. Bottled water, canned soda and juices eliminate dependence on the refrigerator.

8. If the health of a family member is a concern, consider staying with friends, in a community center or church where electricity is available. You can also consolidate your resources with neighbors if they have electricity in their homes. Furthermore, your electric Co-op should be notified now, before a storm, if you use life-support equipment in your home.

9. In most rural areas electricity is required to pump water into the home. Since water cannot be pumped during a power outage (unless you have an automatic generator), keep an adequate supply of drinking water on hand at all times.

Think ahead and follow the above tips to be prepared for a power outage. Planning ahead makes such disruptions easier. Finally, remember to stay calm. The electricity will be back on as quickly as possible. Your electric Cooperative is working long hours to restore your service.

The fruit of their labors; bottling dreams, values and good wine



Those who love the land understand the sheer pleasure of seeing sun, rain, and the richness of the earth bring forth succulent, delicious produce to share with family, friends and others. It's a good life that incorporates tradition, creativity and values that help to make sense of their corner of the world.

It's all of that and more that led Tom and Joyce Carlson of rural Darwin to take land once used to graze milk cows, to plow it up, carefully plant it and tend to what is now neat rows of Marquette, Itasca and Petit Pearl grapes. These sweet and fruity orbs will eventually become sweet, complex and fragrant bottles of Jomas Hill Vineyard inspired wines.

It was their enjoyment of wine that first gave Joyce and Thomas (hence the name "Jomas") the idea to create their own.

"Because we have a small acreage, we were looking for something that would maximize what we have," said Tom. "But it's more than that. We enjoy wine, so it seemed like something we would enjoy. We wanted to use the land correctly to get the best return, but the by-product of that is to provide something that people would enjoy doing."

Jomas Hill Vineyard will be a second career for Tom, who works as a Technical Agronomist for Gold Country Seed, and for Joyce, who leads the Wound and Ostomy Care division of Litchfield's Meeker Hospital. They are close to retirement and like the idea of staying productive and enjoying something completely new and exciting in the years ahead.

They aren't doing it alone, however. This has very much been a family affair. Their son, Luke, a carpenter by trade, has been instrumental in the development of the wine production and facility.

"Luke has done a really nice job," Tom said. "He understands how to stay on top of the wine making and the business aspects."

Their daughter Esther, who is employed in communications and marketing in the agriculture industry, is responsible for designing and maintaining the Winery's Facebook page and creating stories for the wine bottles, along with Luke's wife Angela.

Joyce, Tom says, does "everything."

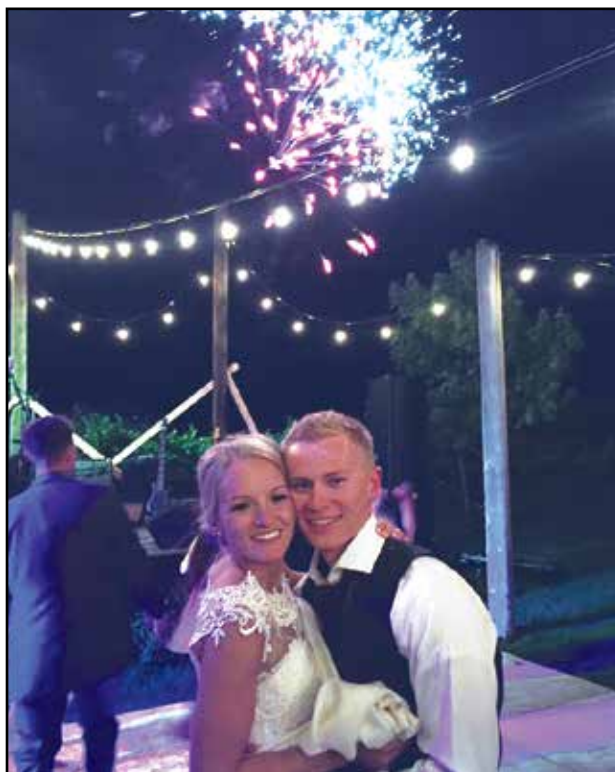
"She has a good eye for pruning, for setting up and arranging things, and has a good vision of what we can become."

Tom said that brainstorming, dreaming and vision casting are so fun at this stage.

"The next thing that Luke wants to do is to build a tasting room," Tom said. "We'd also like to build a brick oven for good, authentic pizza and bread."



Some of the Jomas Hill Vineyard family: Angela, Joyce, Luke and Tom enjoying the fruit of their labor. Submitted photo



Jomas Hill Vineyard is open to events of all kinds, even outdoor weddings. Submitted photo.

The Carlson family plan to put out the welcome mat and create a destination for people.

"There are people that enjoy coming out to the country and experiencing something different, to enjoy some good wine, listen to music and relax."

There will also be opportunities for special events, parties and weddings on-site. The beautiful, unfettered vistas and nearby School House Lake add to the charm of this rural setting.

"We'd like to open our space for use by other groups as well," Tom said. "In the summer, the Open Soul Yoga class comes out every other week to conduct classes in the vineyard."

Jomas Hill Vineyard Wines

The first grapes were planted in 2009. But this is the first year that



The Open Soul Yoga class from Litchfield enjoys a meal "al fresco" after a class held among the vines. Submitted photo.

the Carlsons are using the grapes to create their own wine.

"We sold our grapes to a local winery up until now."

The Marquette and Petit Pearl grapes come from the Pinot Noir family. For those that know wine, the Petit Pearl grapes are more like a Merlot (heavier, more structure and tannins) whereas the Marquette is more like a Pinot with a lighter, fruitier taste.

"We plan to blend them to produce a really nice wine that has a more consistent flavor year after year. This will blend the "fruit forward" of the Marquette and the depth and complexity of the Petit Pearl."

The latest addition to their vineyard, the Itasca grapes, have most recently been planted and have not produced a crop yet. The Itasca grapes will produce a dry white wine. It joins the Marquette as grapes grape developed by the University of Minnesota for the Minnesota climate.

"Something you might not realize," Tom said, "is that we are just three miles north of the 45th parallel, which is the same parallel as some of the best wine growing spots in Oregon and France. However, although we get the same sunlight, we also have to have winter hardness."

The grapes are picked on weekends in the early fall and put into a de-stemmer which removes the stem and crushes the grapes. Sulfur is used to kill off any bad yeast and bacteria naturally existing on the grapes. For red wine, the skin is left on. White wines have the skins removed. Everything has to be as clean as possible during the entire process.

"Bacteria is the enemy of wine," Tom said.

After the sodium bicarbonate treatment, the grapes are put into stainless steel vats for completion of the primary fermentation. Regularly, the mixture is punched down and mixed up. After about a week, the "must" is placed into a bladder press to remove the juice, which goes into oak barrels for aging.

"We are very careful to clean out the barrels very well and keep them



The Marquette grape produces a fruit-forward flavor. This grape was developed by the U. of M. for its cold hardiness.

hydrated for the very best flavor of the wine,”Tom said. “If barrels aren’t clean enough, it can affect the flavor.”

Barrels can last up to 15 years before having to be replaced, if they are well taken care of, although they lose their “oakiness” over time and become more neutral.

The wine is tested about once a month by putting a nose to the barrel hole to smell the wine, and by extracting some wine to see how it tastes.

“The most important thing is how it tastes to the person drinking it.”

The wine is put through a filter and then bottled.

“There are different ways to age wine,”Tom said. “We prefer the tried and true method of aging in barrels. It creates a different chemical reaction that adds flavor.”

The Carlsons plan to have their vineyard open to the public in the near future. For more information, go to their Facebook page at <https://www.facebook.com/Jomas-Hill-Vineyard-207912282568065/> or call (320) 212-6144.



Wine barrels add flavor compounds to the wine and allow the slow ingress of oxygen, a process which makes wine taste smoother and creamier.



Wine is fermented in stainless steel vats (back) and then the wine is extracted in a bladder press (front) before being placed in wooden barrels to age. Red wine is made with the skins still on the grapes. White wine is produced once the skins have been removed to give the characteristic “white” color and flavor. The new Itasca grape will produce a dry white wine.

Industry News

Braving the storm: Ways you and your Co-op can prepare for Minnesota’s worst

There’s no question about it, electric cooperatives have to be prepared for whatever weather comes our way – from unrelenting snowstorms in winter to waves of warm weather in summer – in order to ensure our members continue to receive reliable power.

Load management

Hot and humid weather can produce heat index values of about 100 degrees. For Great River Energy, this means purchasing more expensive energy from the MISO energy market due to a high number of members flipping on their air-conditioners for some relief. In order to meet our members’ electrical demands without incurring higher energy costs, we implement our load-management programs. More than 200,000 residents participate in programs that allow Great River Energy to cycle their air conditioner, water heater or some other load for a period of time on high-demand days. Because of this, Great River Energy has the ability to control 15 percent of its peak load. That’s the equivalent of reducing electricity demand by more than 200,000 homes on a normal summer day. For participating in these peak-reducing programs, members receive a reduced electric rate from their distribution cooperative.

Responding quickly to demand

As more people use their air conditioners, fans and freezers, Great River Energy can add generation assets to the system. Great River Energy owns and operates several natural gas peaking plants in Minnesota. These plants generally run on only the hottest and coldest days of the year, when demand for electricity is especially high. The plants use natural gas or fuel oil to generate electricity and can be fired up in a matter of minutes.

For example, Great River Energy’s newest peaking facility—the Elk River Peaking Station—can ramp up to produce 150 megawatts of power in 10 minutes, which is faster than any other industrial turbine of its size operating in the world.

Responding quickly after a storm

If unruly weather strikes, member co-ops work with Great River Energy to restore power in a timely fashion.

“Great River Energy has service centers throughout our service area so that when a storm hits, we can quickly assemble a team to bring back reliable power,” said Roger Kiefer, manager transmission construction and maintenance. “We are also a member of a mutual assistance group which can augment our personnel or equipment. In addition, we have a comprehensive storm response plan so that our system can continue to provide reliable power.”

After a storm, tree crews might have to clear tree branches or limbs from the area before repairs can be made. Often, high winds will blow trees into power lines, and that damage has economic impact on the co-op and on rates to members. One way you can help reduce outage time is by planting power-line friendly plants in your yard. Where possible, many pollinator-friendly plants work well by power lines. These plants include black-eyed Susans, lilac bushes and Big Bluestem grass.

Great River Energy



Be Safe

Always call before you dig

CALL 811 BEFORE YOU DIG. IT’S THE LAW.

- UNDERGROUND POWER LINES** can be just as dangerous as overhead power lines. Avoid serious injury and property damage by calling 811 before you dig to have underground facilities marked.
- Call Gopher State One Call at 811 at least two business days prior to a dig.
 - Dial 811 or 1-800-252-1166 during normal business hours; this service is free for homeowners.
 - Minnesota state law requires you to call.
 - If you damage a line, you may be financially responsible for repairs.

You may also submit your dig information at gopherstateonecall.org/submit.

We salute you.
We remember and honor those who have sacrificed all for freedom and our country.

Heartland Security
888.264.6380 | heartlandss.com



AC tune-ups eligible for credit once every two years

Schedule an air conditioning tune-up with your contractor today.

Just schedule a tune-up of your central air conditioner or air source heat pump (unit must be at least five years old and in working condition to qualify) and when your licensed professional HVAC contractor performs the service work, have them complete the rebate coupon. Send the completed rebate form to the Cooperative with a copy of the contractor's invoice. His tune up must include the items on the coupon. After the Co-op receives your documentation, we will credit your electric bill \$25 within 4-6 weeks.

Air Conditioner/Heat Pump Check List

Eligible for credit a maximum of once every 24 months

Owner _____
Acct. # _____
Address _____
Location # _____
Phone # _____
Company doing Tune-Up _____
Technician's Name _____
Company Phone # _____

CHECK LIST

Brand Name _____
Model # _____
Serial # _____
Tons/BTU Rating _____ SEER Rating _____

- ☐ Clean Outdoor Unit
- ☐ Clean and Inspect "A" Coil
- ☐ Check Blower Belt
- ☐ Compressor Motor Amp Reading Check
- ☐ Compressor Amp Reading Check
- ☐ Blower & Oil
- ☐ Blower Motor Amp Reading Check
- ☐ Check Filter
- ☐ Check Refrigerant Level & Pressure
- ☐ Blow Out Drain Line
- ☐ Visual Inspection of Cooling System

Recommendations _____
Technician Signature _____
Date _____

March 2018 Outage Summary

There were 53 outages in March. Out of the 53 outages, 11 were planned by the Co-op for scheduled transformer or pole changeouts or service upgrades, 10 were transmission/power supply issues, and nine were due to ice, sleet or frost.

The outages affecting the most members were transmission/power supply outages on March 5. Over 2,900 members served by four separate MCPA substations experienced an outage at 11:10 a.m., lasting from 12 minutes to one hour and eight minutes. About 3:30 p.m. that same day those same four substations

experienced a second outage due to power supply lasting eight minutes to 2.5 hours, depending upon which substation feeds their power.

Most outages affect only one or two members. They are frequently caused by small animals, trees in the line, equipment failure, or motor vehicle/machinery accidents. Larger outages affecting hundreds of members at a time are usually caused by transmission outages, storms, equipment failure to substation equipment, or accidents. Restoration time on weekend and evening outages, when line crews are called out from home, usually take a little longer to get back on than outages when crews are already out working on the project.

No ducts...no worries!

Cool and heat your home with a ductless air source heat pump AND for a limited time – get enhanced rebates!

CONTACT YOUR COOPERATIVE TO LEARN MORE

Heating Source	Regular Rebate	Promo Rebate
Delivered fuels	\$300	\$450
Electric heat	\$500	\$750

Limited funds are available and awarded on a first-come, first-served basis. Rebate amounts and programs are subject to change without notice.

ENERGY WISE MN

MCPA News Ads — Free want ad service for members

Please limit your ad to nine words. Use the coupon printed here or available at McLeod Cooperative's front desk to submit your ad. Ads will be printed for one month only. Please submit a new ad if you want it published more than one month. Include your name and address, which will be used for identification purposes only. Ads must be received by May 28 to be included in the June issue. Thank you!

Please run this ad in the next MCPA News

Name: _____
Address: _____
Telephone number: _____

Remember to limit your ad to nine words!

1 _____ 2 _____ 3 _____
4 _____ 5 _____ 6 _____
7 _____ 8 _____ 9 _____

Clip and Send to: McLeod Cooperative Power, ATTN: Classified Ads
P.O. Box 70, Glencoe, MN 55336

Please check ad category

☐ Giveaway
☐ For Rent
☐ For Sale
☐ Wanted

For Sale Miscellaneous

- Pronto electric wheelchair, adult size, barely used. \$2,000/BO. 320-234-7181
- Used lumber 2X4 & 2X6, 12ft long and others. 320-587-7746
- Rocks for landscaping. All sizes & shapes. Best offer. 320-587-4681
- 55-gallon steel drums with removeable lids. \$15/each. 952-353-2351
- Pine, spruce, fruit and shade trees for sale. 612-751-3505
- 800-gallon round poly tank. 320-864-4496
- 82-gallon State water heater. New in box. No warranty. \$550. MCPA 800-494-6272

For Sale Farm

- Used steel fence posts, all sizes. \$1/each. 320-587-8836

- E-Z trail thrower rack, 8 ton running gear. \$1,200. 612-619-6281
- 4ft heavy duty drag harrow. 507-237-2754
- New Holland whirl-a-feed blower, model 28. 507-327-1869
- 1000-bushel portable holding bin w/roof, auger, motor. 320-583-2747
- Tile intake markers. Steel posts/wood tops. 4 1/4in X 12in. 320-864-3282
- Kane 2-hole creep feeders and nursery feeders. 320-864-4051
- Nelson creep waterers. 320-864-4051
- John Deere "A" tractor. 320-587-8386
- John Deere "B" tractor. 320-587-8386
- John Deere "A" parts tractor. 320-587-8386
- John Deere disk and John Deere plow. 320-587-8386
- Vermeer Rebel 5410 round baler. 320-395-2716

Wanted

- Spring Cleaning? Looking for old coins for son's collection. 320-327-2782

Disclaimer – McLeod Cooperative Power Association (MCPA) assumes no liability for the content of, or reply to, any item posted. The party posting any advertisement assumes complete liability for the content of, and all replies to, any advertisement and for any claims against MCPA as a result thereof, and agrees to indemnify and hold MCPA harmless from all costs, expenses, liabilities and damages resulting from, or caused by, any advertisement or reply thereto.

Pick a payment method that meets your security standards

Guarding our member’s personal and financial information is a priority for McLeod Co-op Power. The Co-op takes extra precautions to safeguard member information and prevent unnecessary sharing of member data with third party vendors.

There are a variety of ways for members to pay their monthly electricity bill:

- Direct Payment/bank draft through the Co-op
- Bill pay service from your financial institution
- Payment in-person at the Co-op
- 24-hour payment drop box at the Co-op office in Glencoe
- Mail your check through the US Postal Service
- Credit card payment over the phone

Some Co-op members would prefer that McLeod Co-op Power offer online bill pay or automatically recurring credit card payment options. At this time, McLeod Co-op Power has not found an option that is both cost effective and meets the security protocols we believe need to be in place to properly secure your data.

The most cost-effective way for the Co-op to process your payment is through our Direct Payment plan. A large percentage of the membership uses the Co-op’s Direct Payment plan. It is easy to enroll and your bill will always be paid on time as the Co-op will initiate the transaction automatically each month with your bank.

Bill pay services from financial institutions are growing in popularity too. Contact your financial institution for details on their process.

What Can You Do With \$1 Worth of Electricity?

You pay your electric bill every month, but what exactly are you paying for? It turns out, quite a lot.

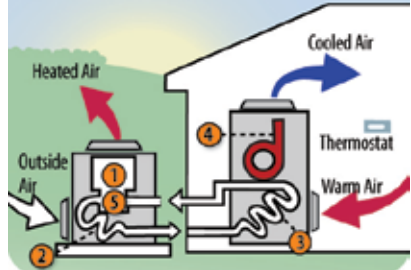
Run a vacuum cleaner for 6 hours



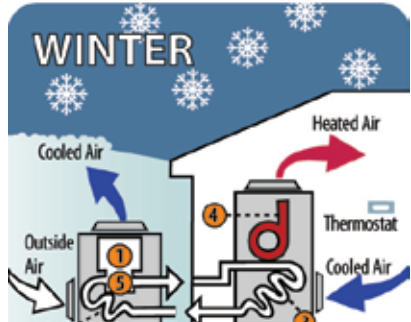
How Do Air-Source Heat Pumps Work?

By transferring heat between a house and outside air, these devices trim electricity use by as much as 30 percent to 40 percent in moderate climates.

SUMMER



WINTER



1 Compressor
Increases refrigerant/freon pressure to accept the maximum heat from the air.

2 Condenser
Coils move freon (and with it, hot or cold air) to or from outside air.

3 Evaporator
Coils move freon (and with it, hot or cold air) to or from outside air.

4 Air Handler
Fan blows air into a home’s ducts.

5 Reversing Valve
Switches the direction of the freon flow, changing the heat pump’s output to hot or cold air (controlled by thermostat).

Source: NRECA

Heat pumps: The Smart Choice

ASHPs (air source heat pumps) use the same technologies that are found in refrigerators and air conditioners, and deliver cooling and heating by moving heat to and from the outdoor air.

During the summer when cooling your home, the ASHP works just like a central air conditioner, moving heat from inside your home and transferring it outside. An ASHP has the ability to reverse this process for heating: the ASHP harvests heat from outside air – some systems can provide heating in temperatures as low as 0 degrees Fahrenheit – and transfers it into your home. The result is that homeowners are able to run their furnaces less and get extremely efficient heating from their ASHP.

Both of these options can be controlled from a thermostat while the home heating function is also able to work in tandem with conventional gas furnaces. The product will automatically select the most ideal balance between the two sources to maintain the most efficient heating combination based on a homeowner’s desired indoor temperature.

ASHPs contain two sets of coils, a compressor and a fan that circulates cooled or warmed air. The key to its ability to heat or cool is a special reversing valve that changes the refrigerant flow’s direction, allowing the unit to seamlessly switch between air conditioning and heating.

Benefits to members

Members can realize substantial savings on home cooling expenses by installing an ASHP instead of other conventional air conditioning units. And by moving heat, the ASHP is able to transfer a greater amount of energy than it consumes, which means that an ASHP can have effective heating efficiencies of up to 300 percent.

ASHPs provide a safe, environmentally-friendly solution for home comfort conditioning as well. They don’t use an open flame or create products of combustion – such as carbon monoxide and other emissions – so there is no need for venting, and their extended equipment life means less pollution associated with discarding old units or parts and manufacturing their replacements.

The warmth provided by ASHP technology can be superior in quality compared to conventional furnaces. The heat distributed by ASHP is distributed more evenly and holds its moisture better, resulting in more natural, comfortable warmth.

Part of your electric Cooperative’s mission is to help you use energy wisely by offering a variety of programs, resources and products to make this possible. For more information on available rebates on energy efficient equipment and programs such as energy management programs that utilize an air source heat pump, contact energy management personnel at the Cooperative.

Call the Co-op for free net-metering info packet BEFORE you shop for solar or wind system



It is very important that you contact the Co-op for your free net-metering info packet before you start shopping for a solar or wind system. Educational materials on the interconnection of renewable energy systems can be mailed or e-mailed to you at no charge upon request. Many renewable resource documents are available on the Co-ops website.

The State of Minnesota has standardized rules for all consumers who plan to own or operate any distributed generation facilities (like solar or wind). Whether you are doing one solar panel on the side of your barn or a big wind turbine, the rules and requirements by the state to ensure safe interconnection and operation are very similar. The Cooperative can provide you with the most up-to-date policies and requirements for installing renewable energy.

It is important that you have the most current information so that you can ask all the necessary questions when researching a renewable product or installer and understand the requirements for interconnection.



Get up to \$20 rebate on LED bulbs

Any MCPA electric member who purchases ENERGY STAR or DLC-rated LED bulbs or fixtures may apply for a \$2 per bulb rebate. Limit of ten bulbs, for a total rebate of \$20. Purchase your high efficiency LED bulbs or fixtures at any retailer of your choice.

The rebate form is available on the Co-op's website at www.mcleodcoop.com (click on Rebates). Rebate forms are also available by calling the Co-op at 1-800-494-6272 or stopping

in the office at 1231 Ford Ave. in Glencoe. Complete and return the rebate form and attach a copy of the original dated sales receipt and the package UPC symbol within 90 days of purchase or before Dec. 21, 2018, whichever comes first. Bulbs must be installed within the Co-op's service territory. The rebate amount will be applied as a credit to your electric bill. All rebates are processed on a first come, first serve basis. If rebate funds are depleted, rebates will cease for 2018.

2018 Fluorescent Bulb Recycling Program



Here's how it works:

- Free recycling of compact fluorescent lamps (CFLs) with coupon. Simply bring your used CFL and FREE recycling coupon to a participating retailer.

Free CFL Recycling ONLY:

- Home Solutions (Norwood Young America)
- Corner Stone Hardware & Mercantile (Lester Prairie)
- Gibbon Lumber & Hardware (Gibbon)
- UFC Farm Supply (Waconia)

Accept CFLs and fluorescent tubes for recycling:

- Beckler's Hardware Hank (Bird Island)
- Fleet Farm/True Value (Glencoe)
- The Hardware Center (Gaylord)
- Thomes Bros. (Arlington)
- UFC Farm Supply (Waconia)

- You must be a MCPA residential or small business member to participate.
- Each coupon may be redeemed for up to 10 bulbs.

While fluorescent lamps are environmentally preferred over incandescents, they do contain a small amount of mercury and if improperly disposed of can be harmful to the environment. It is illegal to place them in the trash.

Free CFL Recycling



Name: _____

Address: _____

City: _____

State: _____ Zip: _____

of bulbs redeemed: _____ (up to a maximum of 10 bulbs)

Coupon expires 12/15/2018. Limit of 10 bulbs per coupon. Coupon valid only when completed. Must be MCPA residential or small business member to qualify. Must be redeemed at participating hardware store: Home Solutions in Norwood Young America, Corner Stone Hardware & Mercantile in Lester Prairie, Gibbon Lumber & Hardware in Gibbon, Beckler's Hardware Hank in Bird Island, Fleet Farm/True Value in Glencoe, The Hardware Center in Gaylord, Thomes Bros. in Arlington or UFC Farm Supply in Waconia.

50¢ off Fluorescent Bulb Recycling



Name: _____

Address: _____

City: _____

State: _____ Zip: _____

of bulbs redeemed: _____ (up to a maximum of 10 bulbs)

Coupon expires 12/15/2018. Limit of 10 bulbs per coupon. Coupon valid only when completed. Must be MCPA residential or small business member to qualify. Must be redeemed at participating hardware store: Beckler's Hardware Hank in Bird Island, Fleet Farm/True Value in Glencoe, The Hardware Center in Gaylord, Thomes Bros. in Arlington, or UFC Farm Supply in Waconia.

50¢ off Fluorescent Bulb Recycling



Name: _____

Address: _____

City: _____

State: _____ Zip: _____

of bulbs redeemed: _____ (up to a maximum of 10 bulbs)

Coupon expires 12/15/2018. Limit of 10 bulbs per coupon. Coupon valid only when completed. Must be MCPA residential or small business member to qualify. Must be redeemed at participating hardware store: Beckler's Hardware Hank in Bird Island, Fleet Farm/True Value in Glencoe, The Hardware Center in Gaylord, Thomes Bros. in Arlington, or UFC Farm Supply in Waconia.