

McLeod Cooperative Power NEWS

November 2016

In this issue...



Bucket of Thanks during harvest season 3



It's beginning to look a lot like Christmas 4

Official publication of

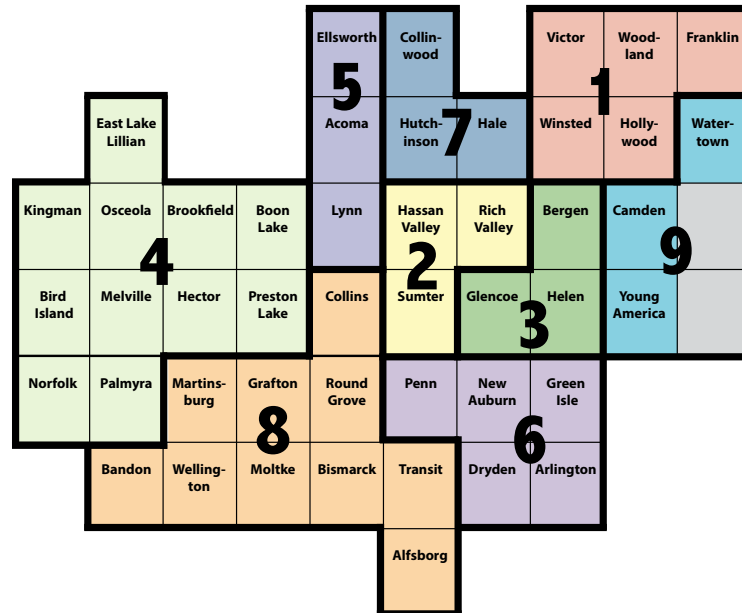


New director district boundaries will equalize voting districts

The Board of Directors of McLeod Cooperative Power has approved a plan to redistrict in 2017. To equalize the number of voting members in each district, the boundary lines were redrawn, in accordance with the MCPA by-laws, to get each voting district as close to the average number of members as possible. This change comes about following the announcement by long-time board member Roger Karstens that he will not seek re-election at the end of his term.

Since the last reorganization of director districts in 1987, the number of members in some voting districts has increased significantly and in other districts has decreased. This redistricting will establish, as near as possible, an equal number of voting members per district. There will continue to be nine director seats and three elections per year. The new boundaries will put many members in a new voting district for the director elections in April of 2017. A map of the new boundaries is shown.

It is important for members living in a township within Districts 1, 2, and 3 to pay special attention, as those are the districts having upcoming director elections in 2017. District 3 is a newly created district with no incumbent director so at least two new director candidates will be



needed in this district to meet the election ballot requirements of the MCPA by-laws. Members interested in being a director candidate in one of these three districts should read the information on page 7 of this newsletter and complete the director application form.

Three members are needed from each of the Districts 1, 2, & 3 to serve on the Nominating Committee to select candidates for the ballot. Members willing to serve on the Nominating Committee should read the details on the page 7 article "Volunteers Needed for Nominating Committee" and call the Co-op if they are willing to serve on the committee. Member involvement is an important part of the democratic

process. Cooperative organizations being controlled by their members is one of the things that makes cooperatives unique.

Each member served by McLeod Cooperative Power Association and residing in the following townships will be registered to vote in the following assigned districts.

District 1: Hollywood Township in Carver County, Winsted Township in McLeod County, Victor, Woodland, and Franklin Townships in Wright County

District 2: Sumter, Hassan Valley, and Rich Valley Townships in McLeod County

District 3: Bergen, Helen, and Glencoe Townships in McLeod County

District 4: Kingman, Osceola, Brookfield, Boon Lake, Preston Lake, Hector, Melville, Bird Island, Norfolk, and Palmyra Townships in Renville County, and East Lake Lillian Township in Kandiyohi County

District 5: Lynn and Acoma Townships in McLeod County, and Ellsworth Township in Meeker County

District 6: New Auburn, Green Isle, Arlington, and Dryden Townships in Sibley County, and Penn Township in McLeod County

District 7: Hutchinson and Hale Townships in McLeod County, and Collinwood Township in Meeker County

District 8: Collins and Round Grove Townships in McLeod County, Grafton, Moltke, Bismarck, Transit, and Alfsgborg Townships in Sibley County, and Martinsburg, Wellington, and Bandon Townships in Renville County

District 9: Camden, Young America, and Watertown Townships in Carver County

Holiday Treats Thurs., Dec. 15



Plan to visit the Co-op office at 1231 Ford Avenue in Glencoe on Thursday, December 15 if you want to partake of holiday cookies, cider and coffee. Holiday treats will be available from 8 a.m. to 4 p.m. on the 15th. Members may also want to visit with our general manager, pick up their 2017 scenic calendar, and register for a door prize. The Co-op will have employees available to answer questions you have on community solar, joining a Load Management Program for heating or water heating and emergency pendants.



Scenic 2017 calendars are now available

This year's 2017 scenic Minnesota calendars are now available in the Co-op office. Please stop in and pick up a copy. First come, first serve, while supplies last.

State grants help fund livestock improvements on the farm \$2 million available for on-farm projects

ST. PAUL, Minn.

Minnesota Agriculture Commissioner Dave Frederickson asks livestock producers to apply for a portion of \$2 million in grants available for on-farm improvements as part of the Minnesota Department of Agriculture's (MDA) Agricultural Growth, Research and Innovation (AGRI) Program.

"Livestock Investment Grants help farmers stay competitive and reinvest in their industry," said Frederickson. "Last year, we had 104 livestock farmers receive grants to improve their operations."

With funds awarded during the Fiscal Year 2015 Livestock Investment Grant, Jared Franke of Hayfield constructed a new beef barn to increase efficiency and allow the next generation to enter into the family farming operation.

In Fairmont, Michael Laue constructed a 2,400 head swine facility to increase profitability and allow a young farmer to start farming full time.

Matthew and David Hanson of Goodridge used grant funding to expand and improve their existing dairy facilities by adding a robotic milking unit and installing equipment to improve profitability.

Qualifying producers are reimbursed 10 percent of the first \$500,000 of investment, with a minimum investment of \$4,000. Qualifying expenditures include the purchase, construction or improvement of livestock buildings or facilities. Fencing, feeding and

waste management equipment are also covered. Producers who suffered a loss due to natural disaster may also apply. The grant will not pay for livestock, land purchases or debt refinancing.

Past applicants who did not receive an award need to reapply for the 2017 program. These grants are incentives to start projects, which must begin after January 1, 2017. Applications for operations with farmers transitioning into livestock, beginning farmers, and those with a positive environmental impact receive priority. Details and grant guidelines are available at www.mda.state.mn.us/livestockinvestmentgrant.

The application deadline is December 16, 2016. Please apply online: <http://www.mda.state.mn.us/grants/grants/~media/Files/grants/ag031501igx.pdf>

CONTACT: Alauna Yust, MDA Communications
651-201-6629, alauna.yust@state.mn.us
www.youtube.com/mnagriculture
www.twitter.com/mnagriculture
www.facebook.com/mnagriculture
625 Robert St. N., St. Paul, MN 55155-2538
1-800-967-2474, www.mda.state.mn.us

In accordance with the Americans with Disabilities Act, this information is available in alternative forms of communication upon request by calling 651-201-6000. TTY users can call the Minnesota Relay Service at 711.

The MDA is an equal opportunity employer and provider.

Manager's Message — by Carrie L. Buckley, General Manager



Local Control

Electric cooperatives are guided by seven Cooperative Principles, the second of which is Democratic Member Control. It reads, "Cooperatives are democratic organizations controlled by their members, who actively participate in setting policies and making decisions. The elected representatives are accountable to the membership. In primary cooperatives, members have equal voting rights (one member, one vote) and cooperatives at other levels are organized in a democratic manner."

Simply put, the second cooperative principle means you, as member-owners, control McLeod Power through your elected Board of Directors. Because of the elected Board of Directors, electric cooperatives are typically exempt from oversight by the Public Utilities Commission (PUC). On the other hand, Investor Owned Utilities, a monopoly without an elected Board of Directors, falls under the jurisdiction of the PUC.

I wanted to talk about local control because McLeod Power and other electric cooperatives in the state are concerned the politically appointed PUC, through a current investigation, are leaning closer into the affairs of our democratically controlled cooperatives than we believe is appropriate.

The PUC investigations concern an access fee for net metered accounts called Distributed Generation Access Fee. This fee was made possible in 2015 when the Minnesota Legislature passed a bill that changed the net metering statute. The change allows cooperatives and municipal utilities to collect the additional fixed cost of serving net metering or distributed generation (DG) customers through an additional fee. The

additional fee ensures both DG members and non-DG members are charged fairly for the electric infrastructure necessary to serve all members. There are special interest groups which oppose this fee and have brought the matter before the PUC, which then prompted the PUC to open a docket and investigate the fees charged by the electric cooperatives. Our concern stems from the perspective that we already have democratic controls in place through our locally elected Board of Directors to set rate making policy.

We are discussing our concerns with legislators and the PUC to help ensure they understand the importance of local control. We are relating that Co-ops are locally controlled and that means we respond to the needs of the members we serve, whether through community focused rates or innovative programs that help our members keep costs down.

Member participation and a locally elected cooperative board are key to a successful McLeod Cooperative Power Association.

Happy Thanksgiving

I once again am very grateful to the employees of McLeod Power for their dedication to the success of this organization, to the Board of Directors for their vigilant guidance, and especially to you, our member-owners, for your participation in our electric cooperative. I sincerely wish you a Happy Thanksgiving.

Proud to keep your lights on, Carrie



Going south for the winter

Please notify the Cooperative if you are heading south for the winter. Although your meter will be automatically read, we still need to know what payment arrangements you prefer.

Options are:

- You can pay in advance.
- Have the post office forward your mail.
- You can sign up for auto pay and have the payment automatically deducted from your checking or savings account.
- You can call us with a credit card payment.

Be sure to make arrangements before you leave by calling 1-800-494-6272.

The employees and directors of McLeod Cooperative Power wish all of our members and their families a blessed Thanksgiving. Take this time to be grateful for the many blessings we each enjoy.

The MCPA office will be closed Thursday and Friday Nov. 24 & 25. Please use the 24-hour outage number to reach the Cooperative for outages, emergencies or other messages: 1-800-927-5685.



Board of Directors

District 1
Oria Brinkmeier, **Lester Prairie**

District 2
Joe Griebie, **Brownston**

District 3
Roger Karstens, Vice President
Hutchinson

District 4
Doug Kirtz, Secretary-Treasurer
Hector

District 5
Allan Duesterhoeft, **Hutchinson**

District 6
Gary Burdorf, **Arlington**

District 7
Randy Hlavka, GRE Representative
Silver Lake

District 8
Keith Peterson, President
Hector

District 9
Gerald Roepke, Asst. Secretary-Treasurer
New Germany

McLeod Cooperative Power News

USPS 2220
Periodicals Postage Paid at Hutchinson, MN
POSTMASTER: Send address changes to
McLeod Cooperative Power News
P O Box 70, Glencoe, MN 55336-0070

The **McLeod Cooperative Power News** is published monthly for \$4.70 per year for members and \$8 per year for non-members by McLeod Cooperative Power Association
1231 Ford Ave. North, Glencoe, MN 55336-0070

Editor: Sue Pawelk
General Manager: Carrie L. Buckley

The McLeod Cooperative Power News is the official member publication of McLeod Coop Power Association and focuses on our members, programs and events.

All member story ideas and comments are welcome.
Send to Sue Pawelk at the address shown.

Office Hours:
Monday - Friday
7:45 a.m. - 4:30 p.m.

Phone: 320-864-3148
1-800-494-6272
24-hour outage: 1-800-927-5685
Fax: 320-864-4850
Web site: www.mcleodcoop.com

Gopher State One Call 811 or 1-800-252-1166

McLeod Cooperative Power Association is an equal opportunity provider and employer.



McLeod Co-op Power was assigned to deliver Farm Fatigue buckets in two McLeod County townships. Employees Bob Thomes and Bob Senst helped with distribution.

Thank You!

Each fall the Hutchinson Agri-Business Committee, along with the Glencoe Agri-Business Committee, gather donations of food, wellness, and safety items from Chamber Members. The donated items are packed and hand delivered to the local farmers out in the field during harvest time. In October, McLeod Cooperative Power assisted the local Chamber organizations with delivery of buckets of thanks to area farmers.

Rebate program for 2016

Electric Storage Water Heating*	\$400
Electric Storage Space Heating**	\$50/kW
Air Source Heat Pump	
14.5 SEER	\$480
15 SEER	\$580
16 SEER or higher	\$630
Ductless Air Source Heat Pump	
Delivered Fuels.....	\$300
Primary Electric Heat	\$500
Ground Source Heat Pumps (controlled or uncontrolled)	
	\$400/ton
ECM (fan motor).....	\$100
Recycling of Old Refrigerator or Freezer with documented proof of recycling	
	\$75
LED Yard Light	\$60
ENERGY STAR Swimming Pool	
Air source heat pump	\$400
Variable speed pump	\$200
ENERGY STAR Dehumidifier.....	\$ 25

* Marathon or equivalent energy rated heater that is being installed on the Storage Program. ** ETS space heating rebate is exempt from \$2,000 per member maximum rebate limit.

There is a \$2,000 maximum rebate per member per year. Only Storage Space Heating rebate is not included in the \$2,000 cap. Rebates are always on a first come, first serve basis, so please turn in your paperwork promptly. Rebate forms are available for download from the Co-op's website. Air source heat pump rebate forms should be completed by installing contractor. Rebates for high efficiency heat pumps will continue to require installation by a "registered contractor" which has been designated as a quality installer and is listed on the hvacreducation.net web site. A



list of all "registered" contractors in Minnesota is on our cooperative web site at www.mcleodcoop.com. There will be no rebates on central air conditioners in 2016-2017. The Cooperative encourages any member replacing their air conditioner to upgrade to an ENERGY STAR rated air source heat pump.

Rebate forms must be received by December 20, 2016 to be eligible for rebate.

New meters provide wealth of information, especially for farmers during harvest

MCPA members do not have to read their meters. The Cooperative does that automatically for you. However, if a member desires to read their meter, keep track of kilowatts used, or monitor their kW demand, that information is visually available to each member by looking at the scrolling display on the front of the meter.

Each display will hold on the screen for about six seconds and then roll to the next display. The order of displays and their meaning is shown below for single phase meters and three-phase meters. Generally, residential accounts will have single phase meters and some larger farms, businesses, or grain drying operations will have three-phase meters.

SINGLE PHASE METER DISPLAY

888 = SEGMENT CHECK
 TKH = TOTAL KWH (METER READING)
 MXD = MAXIMUM KW DEMAND SINCE MIDNIGHT
 IKW = INSTANTANEOUS KW DEMAND
 VLT = VOLTS
 RKH = RECEIVED KWH = ANY REVERSE POWER FLOW
 GSS = GRIDSTREAM SOFTWARE INFO FOR METER TECHNICIANS

THREE PHASE METER DISPLAY

00 = SEGMENT CHECK
 01 = CURRENT DATE
 02 = CURRENT TIME
 03 = TOTAL KWH (METER READING)
 04 = MAXIMUM KW DEMAND SINCE MIDNIGHT
 05 = INSTANTANEOUS KW DEMAND
 06 = PREVIOUS 15 MINUTE INTERVAL (INTERVALS START ON EACH 1/4 HOUR)
 GSS = GRIDSTREAM SOFTWARE INFO FOR METER TECHNICIANS

Farmers who are trying to minimize their kW demand during harvest can monitor what their system is drawing at the current time (instantaneous demand), and also see what it was using the previous 15 minute interval. By shutting off certain fans or motors and then rechecking the instantaneous demand, they are able to tell how much load has been reduced. Also checking 04 = maximum demand since midnight will inform them of the maximum demand their system used during that current day.

At Turck's Trees, "It's beginning to look a lot like Christmas"

November is the month when holiday planning usually all begins: the cooking, decorating, inviting and purchasing. The excitement is in the air as we anticipate the fun of Thanksgiving and Christmas shared with our family, neighbors and friends.

For Steve and Joan Turck of Turck's Trees northeast of Litchfield, the time between early November and mid-December is an especially busy time of the year. That's when the wholesale trees are cut and the gift shop gets filled with items that were ordered months ago.

The weekend after Thanksgiving really gets busy with the 1,500 to 2,000 people a day who visit Turck's 100-acre tree farm to choose the perfect tree for Christmas.

"We go through 12,000 to 13,000 cookies and 132 gallons of warm cider between Thanksgiving and mid-December," Joan said, who is in charge of stocking the farm's gift shop. When done, the gift shop will feature garlands and wreaths, specialty items such as ornaments, wood craft items, tree skirts, coffees, preserves, soups, numerous other food items and many holiday specific items.

The Turck's also plant and sell landscape trees in the "off-season" and also board dogs. However, this time of year, it's all about the Christmas trees.

As the hundreds of adults and children hunt for the "perfect" tree, most don't realize that the tree they choose actually began its journey as a seedling as many as 12 years earlier. Turck's Trees is a sustainable business, with about 10,000 seedlings planted each year by hand using a planting machine. Those seedlings must fight against weeds, too much or too little moisture, bugs and more throughout their life cycles. The seedlings must be hand-weeded until they're tall enough to withstand spray insecticide and herbicide. Fertilization also is done largely by hand so as not to



Every tree begins as a seedling (right) which is planted by hand using a planting machine (above). Two people sit on the machine and plant the seedlings in the trench created by the machine. It takes from 8-12 years before a tree is mature enough to cut. During that time, much care is taken to weed, fertilize and mow the tree farm.



sprinkle fertilizer on the ground between the trees. Depending on the species of tree, it will take between 8-12 years for the seedlings to reach cutting size.

Currently, the Turcks offer nine varieties of Christmas trees and 30-plus varieties of landscape trees. Once a stand of Christmas trees has reached maturity, it's not done yet. In the spring, trees that grow pinecones require that all of the cones be removed, all by hand.

"Fraser's can have as many as 1,000 cones that have to be removed," Steve said. "If we don't remove the cones, the branches won't grow."

Then in early July to mid-August, a crew of anywhere from 10-20 guys walk between the rows of adult trees and use machetes to shape the trees. These crews will travel from farm to farm, much like sheep shearers do, beginning in the south when it's cold and working their ways up to northern states.

In mid to late summer, all the pine trees must be sprayed with color, or "painted."

"By fall, all pines turn a lighter green as the chlorophyll disappears gradually from the needles," Steve said. The coloring agent used is the same type of coloring used by Crayolla brand colors. "It also acts like a sunscreen for the tree to help preserve the chlorophyll," Joan added.

Although all the other firs and spruce are naturally green, they also have their challenges and must be handled uniquely.

"For instance, firs (especially Fraser Firs) and spruce trees can be a challenge to grow in this climate and take more work," Steve said. "That's why they usually are more expensive."

Anyone who has to mow around trees in the yard can understand a bit about the challenge that presents.

"We have to mow the farm 4-5 times a year, which takes quite a bit of time," Steve said.

In late October or the first week in November, the production begins. Trees are tagged with different colors according to species and size. Wholesale orders for their 25 tree lots in Minnesota and North Dakota are filled first.

"We hire a group of high school kids to help us cut, shake and bale the trees according to the wholesale orders we have," said Steve. "We cut them as late as we can to preserve the moisture in the trees, but once they are baled, that helps to seal in moisture, too."



Steve and Joan Turck began their tree business in 1987 and are seeing a second generation enjoy the tradition of cutting their own tree.

Once the wholesale orders are filled, the high schoolers will start roping off the areas that will be open to the public and the work really ramps up on the gift shop.

"I order boxes of crafts and gift items for the shop in January and March," Joan said. "When they arrive, it's fun opening all the boxes and filling the gift shop with all the new items."

The first week in November is when the wreath making also begins in earnest. The Turcks employ half a dozen women to help construct and decorate the wreaths.

"We order three tons of balsam branches from a source in Northern Minnesota," Steve said. "When those are gone, we usually have enough branches cut from our own trees that we can begin using them."

"It takes about five pounds of branches to make one 24-inch wreath," Joan said. The women assemble the wholesale wreath orders first.

"Then we get as many wreaths made for our opening weekend as we can, although we continue to make wreaths throughout the month to make sure we always have fresh wreaths for sale."

In addition to the wreaths, Joan makes and sells a variety of evergreen items from centerpieces to kissing balls. "We also sell boughs that people can use to create their own décor."

The Turcks work many late nights to pull everything together for their first opening the day following Thanksgiving.

"We put in about 3,000 hours each," Steve said. "But it's worth it when those doors open and you see the same people who come every year. Or you see the children who used to come are now grown and bringing their own children. I love to see the little ones in their snowsuits squealing and running up and down between the trees, throwing snowballs or making snowmen."

In addition to the treats and items in the gift shop, children enjoy Candy Cane and Sparkle, the two resident female reindeer.

"Children always ask us, 'Can they fly?' Joan smiled. "Well, of course

Analysis: Coal retirements could boost gas prices

Natural gas prices have been low for years now—averaging less than \$2/MMBtu at Henry Hub last winter—but a growing number of analysts believe that is about to change.

A wave of coal retirements could add up to 1 billion cubic feet (Bcf) of demand in each of the next two years, according to Guggenheim analyst Subash Chandra, who believes gas will average more than \$3/MMBtu next year. An anticipated cold winter has drawn warnings from the Natural Gas Supply Association (NGSA) that prices may spike.

“Because of colder weather and growth in demand for natural gas, NGSA anticipates upward pressure on prices compared to last winter,” Bill Green, the group’s chairman, said in a statement.

NGSA’s winter outlook predicts combined demand from the residential, commercial, industrial, electric and exports sectors will result in record demand of 92 Bcf/d. Most of the increased demand will be due to a winter that is forecasted to be 12% colder than last year, adding about 4 Bcf/d in the residential and commercial sectors.

~Utility Dive

Minnesota receives \$2 million federal grant to boost solar energy

Minnesota will have to dramatically increase its 2015 solar capacity — by a factor of 171 — to reach a goal it set in 2013 to generate 10 percent of electricity from solar by 2030.

Officials say integrating solar onto the existing grid will take some planning. The U.S. Department of Energy has stepped in with \$2 million to help ease the transition to more solar power.

Minnesota was the only Midwestern state to receive the Department of Energy grant, which provides technical and analytical assistance to states in meeting their renewable energy goals, according to a news release Thursday from the Minnesota Department of Commerce.

~MPR



The gift shop offers Christmas items of all kinds, as well as handmade wreaths, cookies, cider and cut trees to choose from.



The Turck's two female reindeer, Candy Cane and Sparkle, delight children of all ages. Tractor-pulled hay rides also are available, weather permitting.

they can't really fly, but they know how to throw their head back and prance and jump so that they look like they're ready to take off. It's fun to watch them."

The Turcks so appreciate all the helpers that they get to know each year and working with the high school students.

"They work hard and interact well with the people who come to the farm," Steve said.

Joan said that she and Steve are blessed with the same driven personalities that want everything done just right. Perhaps that's the reason they both have been honored at the State Fair for their efforts. In the Ag/Horticulture Building at the Fair, members of the Minnesota Christmas Tree Association (of which Steve was President) have the opportunity to have their trees judged. One year, Steve's Meyer Spruce tree took first. Not to be outdone, Joan entered a wreath that she designed. Although the judges gave her a second-place ribbon, her wreath won first place in the "Peoples Choice" contest by a wide margin.



Joan's wreath won the People's Choice award at the State Fair. Steve's entry, a Meyer Spruce, won first place.



After Thanksgiving, the farm and gift shop are open. Santa Claus also will make an appearance the first two weekends in November from 11:00 a.m. to 3:00 p.m. For confirmation of activity dates and times, go to their website at turckstrees.com, call (320) 693-3944 or email info@turckstrees.com.

The ultimate in security from Heartland Security



Update your existing doorbell with a Skybell doorbell camera from Heartland Security. The Skybell doorbell camera records video when you want it to — you decide what triggers it, whether it's activated by motion or when the doorbell is pressed. You can receive alerts and watch live video whenever someone is in front of your door, even if they don't ring the doorbell.

Using the Alarm.com app on your smartphone you can see who's at your door and use the doorbell's two-way audio to speak with your visitor. If you want to let someone in but you're unable to get to the door or you're not home, you can use the app to remotely unlock the smart lock on your door and disarm

the system.

Day or night, you'll be able to see what's happening on your doorstep. The Skybell doorbell camera has built-in full color night vision and you can also set up rules to turn on the porch light whenever motion is detected at night.

Heartland Security offers a 1 year warranty along with professional installation. Available in satin nickel or bronze, the Skybell doorbell camera can enhance any home.

For more information about the Skybell doorbell camera or to schedule a free security analysis, call Heartland Security at 888-264-6380 or visit www.heartlandss.com.

When is Dual Fuel controlled and why?

Members with Dual Fuel systems will periodically have their electric heat controlled as weather conditions, prices in the wholesale energy market, and regional power supplies dictate. Electric heat on Dual Fuel can be controlled for up to 400 hours per year and up to 12 hours in one stretch without recharge, so you want to make sure your back-up heating system is automatic and able to heat your home on the coldest winter nights for extended periods. Although control most usually will occur between 4 and 10 p.m. on a week night, it can happen in the morning and it can happen on a weekend.

For members with peak shave water heaters or Dual Fuel, control times are available daily by going to the Cooperative's web site. Click on "Is it a Peak Control Day?" on our home page for more detailed information and historical control times.

Make sure your backup fuel supply is adequate!

September Outage Summary

During the month of September the Cooperative had a total of 49 outages, affecting 513 consumers. Seventeen of those outages were caused by lightning.

The largest outage was actually a planned outage for line switching on Thursday, September 1 for 40 minutes in the morning in Camden Township of Carver County. A temporary line was replaced with a permanent three-phase line connection for the entire Hidden Creek subdivision. It affected 167 residences. Members were notified a day or two in advance of the outage so they could plan accordingly.

The second largest outage was caused by

lightning on Wednesday, September 21 north of Hutchinson. Lightning caused a recloser to malfunction, causing an outage for 85 members on the Hook Lake Substation. It took two hours and 22 minutes to get everyone back on.

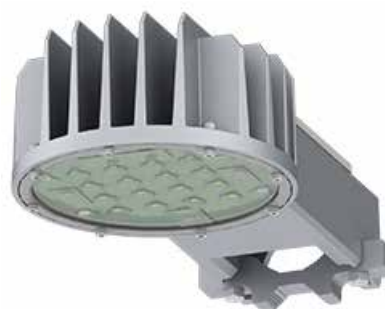
Most outages affect only one or two members. They are frequently caused by small animals, trees in the line, equipment failure, or motor vehicle/machinery accidents. Larger outages affecting hundreds of members at a time are usually caused by transmission outages, storms, equipment failure to substation equipment, or accidents. Restoration time on weekend and evening outages, when line crews are called out from home, usually take a little longer to get back on than outages when crews are already out working on the project.

LED yard lights now for sale at the Cooperative office

Members have been asking the Co-op to stock and sell high-efficiency LED yard lights. They are now in stock and available for any member to purchase. The 50 watt yard light is for members who want to have their own private yard light that can be wired from the member's secondary service. The light fixture is a long lasting, low maintenance, highly efficient replacement for existing 100/150/175 watt high pressure sodium, metal halide and mercury vapor security lights. The light utilizes an all-aluminum housing for maximum heat transfer and durability. The fixture has a rugged construction and a 3-wire UL listing. The light sells for \$175.00 plus sales tax. A mounting arm can also be purchased for \$20.00 plus sales tax.

The 50 watt light cannot be flush-mounted on a building. It needs to be suspended by a 1.25" to 2.5" diameter mounting arm. So if a member is replacing an old yard light fixture that was on a traditional arm, you may reuse the old arm and mount this light to it, or you can purchase a mounting arm from the Co-op. **Private lights cannot be on poles owned by the Co-op.**

These lights qualify for a \$60 high efficiency rebate from the Co-op. To receive the rebate the light must be installed on a location served by MCPA



and the member must submit a rebate form and copy of sales receipt so it is received at the Co-op by December 20, 2016. Members may download a rebate form from the Co-op's website www.mcleodcoop.com or call the office 1-800-494-6272 to get a form sent out by mail.

Lights must be picked up and paid for at the Cooperative's Glencoe office. The Co-op will accept cash, check or credit card payment for the light. Call ahead to verify availability. They are selling quickly and we are waiting for next shipment to arrive. And if you call ahead we can have the product ready for you.

MCPA News Ads — Free want ad service for members

Please limit your ad to nine words. Use the coupon printed here or available at McLeod Cooperative's front desk to submit your ad. Ads will be printed for one month only. Please submit a new ad if you want it published more than one month. Include your name and address, which will be used for identification purposes only. Ads must be received by November 28 to be included in the December issue. Thank you!

Please run this ad in the next MCPA News

Name: _____

Address: _____

Telephone number: _____

Remember to limit your ad to nine words!

1 _____ 2 _____ 3 _____

4 _____ 5 _____ 6 _____

7 _____ 8 _____ 9 _____

Clip and Send to: McLeod Cooperative Power, ATTN: Classified Ads
P.O. Box 70, Glencoe, MN 55336

Please check ad category

- Giveaway
 For Rent
 For Sale
 Wanted

For Sale - Miscellaneous

- JD110 garden tractor with front PTO drive. Make offer. 320-583-7360
- Portable heater w/thermostat 40,000btu. Kerosene/#1 diesel/fuel oil. \$40. 320-864-5842
- Sears Kenmore range, white. Works. \$70. 320-587-4446
- RAM 350MS Hyd push, 4 wheels. \$2,300/bo. 320-522-2814 or 320-522-2167
- 1991 Oldsmobile 98 Regency, 105,000. New tires. \$1,500/firm. 320-238-2272
- Amana upright refrig/freezer 68H X 26D. Nice. \$125. 507-276-8570
- Heavy duty steel double barrel wood stove \$45. 507-964-2339
- Over 160 fine home building magazines years 1981-2006. 320-864-6511
- Bicycle with child seat & front basket. Good condition. 320-587-7746
- JD445 garden tractor w/cab, 2-stage snow blower, blade. \$5,500. 320-864-5221
- New fluorescent light bulbs. Various sizes. Cheap. 320-510-0404

- 8ft slate pool table w/accessories. \$475/bo. 320-510-0404
- Milwaukee 18volt tool set. New batteries included. \$150. 320-510-0404

For Sale - Farm

- Ford 8N 1949. Runs good. 832-398-4777 or 832-398-4610
- JD 4010 with bucket front end. 832-398-4777 or 832-398-4610
- Minneapolis Moline 3 bottom plow. 320-522-2167
- JD800 swather parts. 320-522-2167

Wanted

- Male/female 500 card players, 1:00-3:00 on Fridays. Howard Lake library. 320-485-3335
- Looking for farm land to rent. 2017 and beyond. 320-522-2246
- Gravity box, 300 bu. or larger. 320-583-3302

These want ads are designed to help members buy items from or sell items to other members, or rent their property to members. They are not designed to advertise services or for-profit business pursuits. That is why we do not offer a services column and do not accept advertisements for commercial businesses.

Disclaimer — McLeod Cooperative Power Association (MCPA) assumes no liability for the content of, or reply to, any item posted. The party posting any advertisement assumes complete liability for the content of, and all replies to, any advertisement and for any claims against MCPA as a result thereof, and agrees to indemnify and hold MCPA harmless from all costs, expenses, liabilities and damages resulting from, or caused by, any advertisement or reply thereto.

Volunteers needed for Nominating Committee

To elect directors in Districts 1, 2, & 3 at the 2017 Annual Meeting, we need members from those districts to serve on the Nominating Committee. Nominating Committee members participate in the election process by selecting director candidates and submitting their names to the Board for approval. They also assist with collecting and counting ballots at the Annual Meeting. Volunteers are needed from the following townships:

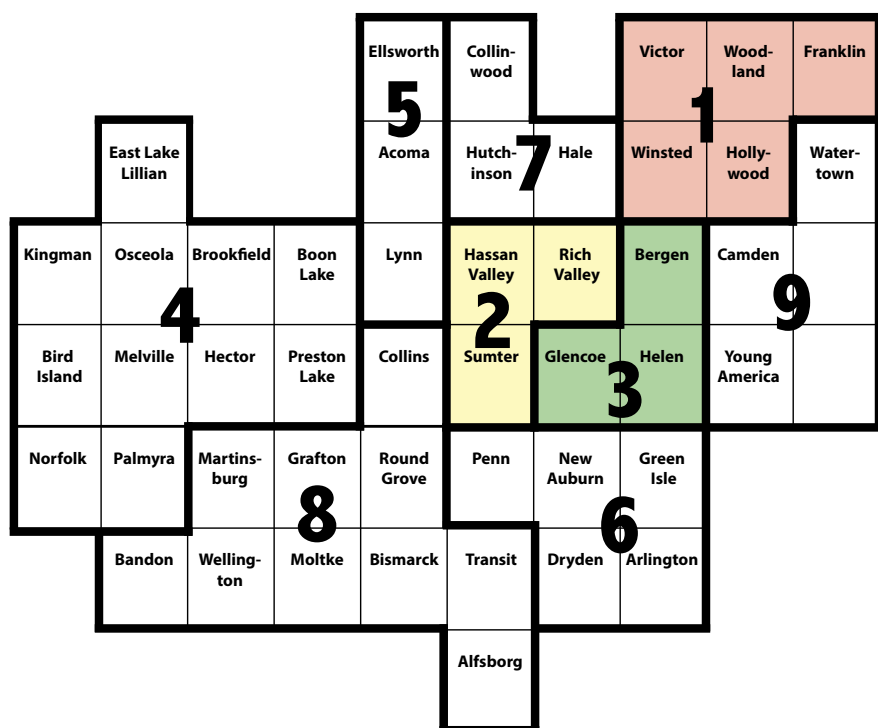
District 1 includes: Hollywood Township in Carver County, Winsted Township in McLeod County, and Victor, Woodland, and Franklin Township in Wright County.

District 2 includes: Hassan Valley, Sumter and Rich Valley Townships in McLeod County.

District 3 is a new district and it includes: Bergen, Helen, and Glencoe Townships in McLeod County.

Call McLeod Cooperative Power at 1-800-494-6272 if you are willing to volunteer for the 2017 Nominating Committee no later than January 3, 2017. Committee meetings are scheduled for January 26 and February 9, 2017, at 10 a.m. The Annual Meeting is planned for April 11, 2017.

Members in good standing who serve on the Nominating Committee are paid a per diem for the meetings plus mileage. Nominating candidates to run for board seats is an important part of the democratic process of operating your electric cooperative. We encourage your participation.



What makes a good director?

At McLeod Cooperative Power we believe that our Board of Directors comprises a pillar connection with our membership and the community at large. Besides meeting the legal requirements for Director nomination, we are seeking individuals who hold some important personal characteristics. We've summarized these attributes below.

Possess a sincere interest in preserving the strength of the Cooperative's operations and maintaining a productive relationship with its consumer-members. McLeod Cooperative Power has assets of about \$40 million, employs 29 full-time people and is responsible for providing quality electric service to more than 6,400 accounts, as well as a variety of ancillary services. Our electric distribution system serves a diverse membership consisting of residences, farms, businesses and industries. While representing all members of the district, **Directors must work with each other to ensure equitable treatment to all members across the entire distribution system.**

Be willing and available to fully participate in the business activities of the Cooperative. Attendance is expected at all scheduled Board of Directors meetings. In addition, from time to time, Directors will be called upon to represent the Cooperative at other meetings and events where their presence is deemed to be beneficial to the Cooperative.

Remain accessible to the members whom they represent. Since the Directors are elected from and by the Cooperative's membership, it is important that they work to **maintain open lines of communication with their constituents. They should also strive to be knowledgeable about trends and circumstances that may impact the people and communities of central Minnesota**, and be capable of using basic computer skills to receive electronic communications and reports from the Co-op.

Be enthusiastic. During these times of accelerated change, we look for proactive, resourceful and inspired leadership.

Director qualifications per the Co-op Articles of Incorporation

Article 3, Section 2 of the McLeod Cooperative Power Association Articles of Incorporation states the following about director qualifications. No person shall be eligible to become or remain a Director of the Cooperative who:

- A. is not a member in good standing of the Cooperative receiving service at the member's primary residence or principal place of business in the district from which the Director is elected;
- B. within five (5) years preceding a Director candidate's nomination was or during service on the Board of Directors is finally adjudged to be guilty of a felony;
- C. within five (5) years preceding a Director candidate's nomination was an employee of the Cooperative;
- D. is or becomes, or at any time during the five (5) years preceding a Director candidate's nomination shall have been, employed by a labor union which represents, or has represented, or has endeavored to represent any employees of the Cooperative;
- E. is a child, grandchild, great-grandchild, parent, grandparent, great-grandparent, brother, sister, aunt, uncle, nephew or niece, whether by blood, or in law, of an employee of the Cooperative;

F. is a person that is child, grandchild, great-grandchild, parent, grandparent, great-grandparent, brother, sister, aunt, uncle, nephew or niece, by blood, or in law, of an incumbent Director that is not up for re-election at that time;

G. is in any way employed by or substantially financially interested in an enterprise competing with the Cooperative or any Cooperative-affiliated business;

H. is or becomes the full-time employee or agent of, or who is or becomes the full-time employer or principal of, another Director; or

I. is absent without cause from three (3) or more regular meetings of the Board of Directors during any twelve (12) month period.

A member that is an authorized farm corporation, family farm corporation, regular corporation, partnership, limited liability partnership or other business entity may select an individual member residing on or actively operating such business entity to be eligible for election to the Board. A member that is not a natural person may select one of its officers to be eligible for election to the Board, provided that not more than two (2) such officers may serve on the Board at the same time.

MCPA Director Candidate Application

The undersigned, a member of McLeod Cooperative Power Association, hereby applies as a nominee for director of McLeod Cooperative Power Association from District _____ and requests that my name be considered by the Nominating Committee to be placed on the ballot for the next election for director from said district to be held at the next Annual Meeting, April 11, 2017.

I certify that my account is current and I am a member in good standing with McLeod Cooperative Power Association from District _____.

I certify that I am a resident of District _____ and am receiving

electric energy from McLeod Cooperative Power Association.

I certify that I am not in a competing business with McLeod Cooperative Power Association.

If elected director, I agree to attend as many meetings of the Board of Directors as possible and to abide by the Articles of Incorporation and By-laws and Policies of McLeod Cooperative Power Association.

Date: _____

Print name: _____

Print address: _____

Signature: _____

Return to the MCPA by Jan. 17, 2017

What is First Call medical monitoring?



A First Alert pendant makes a great Christmas gift for mom or dad. It gives them greater independence and you will worry less about them living alone.

First Call gives you and your loved ones the peace of mind that help is available any time of day, any day of the year. McLeod Co-op Power members and non-members alike who have health or mobility limitations or simply live alone, can subscribe to the Co-op's First Call program. With a simple push of a pendant worn around the neck or wrist, help is summoned day or night. For a low monthly cost of \$30 and a one-time installation fee of \$49 plus tax, you can get that peace of mind for yourself and your loved ones.

First Call is an innovative two-way voice intercom, personal emergency response system. When the pendant is pressed, the caller is in two-way voice communication with CRC, the Co-ops 24-hour medical monitoring center. At the time of installation, we will help you provide CRC with a list of responders that can include family, friends or neighbors who live close by and can get to the home quickly to help if necessary. When the pendant is pressed, CRC will contact one of these responders or emergency services.

Frequently asked questions:

What type of facilities is First Call designed for?

The emergency pendant system is designed for use in a home or apartment.

Who installs the First Call?

The system can be easily installed by the Co-op's trained staff in a few minutes, with the entire process taking less than an hour.

How large is the pendant? Is it waterproof?

The pendant is very small and lightweight and can be worn around the neck or wrist. Yes, the pendant is waterproof.

How far away from the system will the pendant work?

The system can be activated from up to approximately 100 feet away. If the client frequently works outside in the garden or goes to get the mail, the pendant range can be tested when doing the install to verify the client's pendant range.

Does the system operate during a power outage?

Should your power be interrupted, the system has a built-in battery back-up that will operate for several hours.

What does the system cost?

An initial \$49 plus tax installation fee and a \$30 per month monitoring/lease fee. Service is provided on a month-by-month lease, as long as you want to keep it. There is no long-term contract.

What if the system needs to be serviced?

The system requires no regular servicing. In the event of a problem, our trained staff will repair or replace the phone at no added cost to you.

Call McLeod Co-op Power at 1-800-494-6272 to schedule an installation or ask more questions.



\$50 /kW REBATE
on storage heating systems

Save **40-70%**
on HOME HEATING COSTS

Call the Energy Experts
at MCPA
1-800-494-6272

LED Holiday Lighting Rebate

On ENERGY STAR rated holiday light strings

November 1- December 15, 2017

\$2 mail-in rebate per strand of LED holiday lights purchased

(Maximum of 10 light strings eligible for total maximum rebate of \$20.00)

Purchase any brand of LED holiday light strings that are ENERGY STAR-rated.

Mail this completed form with copy of cash register receipt showing light string purchase to McLeod Co-op Power, P.O. Box 70, Glencoe MN 55336 or enclose with your electric bill payment. All light strings must be purchased in 2016 and rebate forms must be received at the Co-op by December 19, 2016.

Customer Name: _____

Address: _____

Acct. #: _____ Location #: _____

light strings purchased (Max. 10) _____

Only members of McLeod Co-op Power are eligible for rebate. One coupon from MCPA Newsletter for up to ten light strings for maximum rebate of \$20 per customer. Reproductions of coupon are not allowed.



No holiday light strings accepted at the Co-op Take light strings to county recycling center

McLeod Co-op Power is no longer accepting holiday light strings for recycling. Please take them directly to your county recycling center.

McLeod County Household Hazardous Waste
1065 5th Ave. SE, Hutchinson
1-800-335-0575

Carver County Recycling Center
116 Peavey Circle, Chaska
952-361-1835

Renville County HHW Facility
32877 County Road 4, Olivia
320-523-1144