

McLeod Cooperative Power NEWS

July 2016

In this issue...



Flower grower reduces carbon footprint 4



Replace air conditioner with air source heat pump 7

Official publication of



Twins Clinic a big hit with area youth

On Saturday, June 4, about 60 area youth participated in the Minnesota Twins Youth Baseball Clinic in Arlington MN. Local students were coached by members of the Minnesota Twins organization on hitting, throwing and catching, and baseball fundamentals. There were two 90-minute sessions conducted for each age bracket, ages 6-9 year olds and 10-13 year olds.

The event was hosted locally by McLeod Co-op Power of Glencoe and the Arlington Baseball Association. Water for the participants was provided by Locher Bros. Distributing of Green Isle. These youth baseball clinics are sponsored by the Minnesota Twins Foundation and Great River Energy in communities across the state. Participants each received a baseball from McLeod Co-op Power and a backpack from Great River Energy.

More photos of the event are available at the Co-op's web site www.mcleodcoop.com.



Farmfest 2016 – August 2, 3, 4! Gilfillan Estate in Redwood County, MN

THE Largest Outdoor Agricultural Event in Minnesota!

As a trusted resource with 35 years of proven credibility, Farmfest connects industry leading manufacturers/providers with decision making producers. Farmfest strives to provide both the traditional programs that bring attendees back year after year while also offering new dynamic events and programs which are designed both to entertain and entice new attendees. Visit the Co-op booth #2301 in the Ag tent.

- Connects 35,000+ attendees with over 625 local and leading companies in the farming industry.
- Features highly topical educational and political forums highlighting topics relevant to the issues that face today's farmers.
- Presents successful field demonstrations which feature the latest technological advancements in the farming industry.
- Offers programs and entertainment for the family.

Visit us at Farmfest 2016 as we promote the future of energy, along with other Touchstone Energy Cooperatives from Minnesota.

Emerging technologies make it easier to be energy efficient and raise awareness of your energy use.

Bring this coupon to booth #2301 in the Ag Tent on Aug. 2-4 to receive a FREE LED bulb.*



* MUST HAVE COUPON. SORRY, NO EXCEPTIONS.

Bring in your coupon for a free LED light bulb. Limit one coupon per person and no duplicate or reproduced coupons accepted.



Nondiscrimination Statement

In accordance with Federal civil rights law and U.S. Department of Agriculture (USDA) civil rights regulations and policies, the USDA, its Agencies, offices, and employees, and institutions participating in or administering USDA programs are prohibited from discriminating based on race, color, national origin, religion, sex, gender identity (including gender expression), sexual orientation, disability, age, marital status, family/parental status, income derived from a public assistance program, political beliefs, or reprisal or retaliation for prior civil rights activity, in any program or activity conducted or funded by USDA (not all bases apply to all programs). Remedies and complaint filing deadlines vary by program or incident.

Persons with disabilities who require alternative means of communication for program information (e.g., Braille, large print, audiotope, American Sign Language, etc.) should contact the responsible Agency or USDA's TARGET Center at (202) 720-2600 (voice and TTY) or contact USDA through the Federal Relay Service at (800) 877-8339. Additionally, program information may be made available in languages other than English.

To file a program discrimination complaint, complete the USDA Program Discrimination Complaint Form, AD-3027, found online at http://www.ascr.usda.gov/complaint_filing_cust.html and at any USDA office or write a letter addressed to USDA and provide in the letter all of the information requested in the form. To request a copy of the complaint form, call (866) 632-9992. Submit your completed form or letter to USDA by:

(1) mail: U.S. Department of Agriculture
Office of the Assistant Secretary for Civil Rights
1400 Independence Avenue, SW
Washington, D.C. 20250-9410;

(2) fax: (202) 690-7442; or

(3) email: program.intake@usda.gov.

This institution is an equal opportunity provider.

Manager's Message — by Carrie L. Buckley, General Manager



This and That-

Legislatively, the state of Minnesota wrapped up their work — maybe, at the end of May. From Jim Horan, Director of Legislative Affairs, Minnesota Rural Electric Association (MREA), "The 2016 Legislative Session ended in chaos at midnight on Sunday May 22, with no bonding or transportation bills. The Legislature did manage to compromise on a tax bill providing \$257 million in tax relief over the 2016-17 biennium and \$543 million in the subsequent biennium, and a \$182 million supplemental budget that included \$35 million for broadband. It is yet to be determined if the Governor will call a special session to get a bonding and/or transportation bill done."

MREA, through our local representatives and with the help of cooperative grassroots support and cooperative unity, was able to pass offensive legislative priorities, including rail crossings and copper theft. The legislature also passed a provision we supported to remove the 1% threshold for infrastructure projects in the Conservation Improvement Program (CIP). We were also successful in blocking harmful legislation. All in all, 2016 was another very productive session for Minnesota rural electric cooperatives. We thank all of our legislators for their efforts.

At the federal level, Director Gary Burdorf representing MCPA and Director Randy Hlavka, representing Great River Energy, participated in our annual national legislative rally, coordinated by the National Rural Electric Cooperative Association (NRECA) and held in Washington D.C. Our Directors joined over 1,500 electric co-op board directors and employee leaders from across the United States.

Our legislative topics for this trip included support for rural broadband, an extension of the geothermal tax credit, Federal Emergency Management Agency (FEMA) reauthorization, pole attachment legislation and improved federal land management policies.

The 2016 Play Ball Youth Baseball Clinic on Saturday, June 4th, was a great success for about 60 area youth who participated in the Twins Clinic in Arlington MN. I would like to thank our co-host the Arlington Baseball Association and also Locher Bros. Distributing of Green Isle for the water. And of course a huge thank you goes out to the Minnesota Twins Foundation and Great River Energy for their sponsorship. Lots of great pictures can be seen through a link on our web page. www.mcleodcoop.com (click on the link on the home page).

National Rural Utilities Cooperative Finance Corporation (NRUCFC) annually hosts a Forum where electric co-op leaders can network and learn about leading topics concerning our industry. NRUCFC provides financing to electric cooperatives across the country. I wanted to pass on two stories from the Forum which really speak to the heart of your rural utility.

The first story came from Sheldon Peterson, NRUCFC CEO, who spoke on the concept that "Market forces are shaping the energy landscape faster than regulation." Nonetheless, he was encouraging that "electric cooperatives are in an ideal position to respond successfully." Fortunately, this plays to the strength of electric co-ops. "A world where consumers are in greater control gives us an edge," Peterson concluded. "Consumers are why we exist."

The second story came from TV personality and philanthropist Mike Rowe, host of the Discovery Channel's hit series "Dirty Jobs," who in a keynote address broached the concept that Americans have become disconnected from work and, as a result take fundamental jobs for granted. He was speaking about jobs that exist in the skilled trades industry, but don't get filled.

The day after speaking at the Forum, Mike Rowe posted this on Facebook; The country is full of electric co-ops. These are the power companies you've never heard of. The ones that keep the lights on across rural America, employ thousands of linemen, and prove in most every state, over and over again, that a career in the skilled trades is both meaningful to the individual and essential to civilized life.

Yesterday, the people who run these cooperatives came together for an annual meeting up in Seattle, and I was invited to say a few words about this and that. I did, and when I left, it occurred to me that these people are far too valuable to be allowed to gather in the same place at the same time.

Seriously — if Steven King is right, and we find ourselves one day in some sort of post-apocalyptic Armageddon — these are the people who are gonna get polite society back on the rails. Something to think about, next time you flip a switch and the lights come on.

All of us at the co-op look forward to keeping your lights on.

Carrie

Board of Directors

District 1
Oria Brinkmeier, **Lester Prairie**

District 2
Joe Griebie, **Brownton**

District 3
Roger Karstens, Vice President
Hutchinson

District 4
Doug Kirtz, Secretary-Treasurer
Hector

District 5
Allan Duesterhoeft, **Hutchinson**

District 6
Gary Burdorf, **Arlington**

District 7
Randy Hlavka, GRE Representative
Silver Lake

District 8
Keith Peterson, President
Hector

District 9
Gerald Roepke, Asst. Secretary-Treasurer
New Germany

McLeod Cooperative Power News

USPS 2220
Periodicals Postage Paid at Hutchinson, MN
POSTMASTER: Send address changes to
McLeod Cooperative Power News
P O Box 70, Glencoe, MN 55336-0070

The **McLeod Cooperative Power News** is published monthly for \$4.84 per year for members and \$8 per year for non-members by McLeod Cooperative Power Association
1231 Ford Ave. North, Glencoe, MN 55336-0070

Editor: Sue Pawelk
General Manager: Carrie L. Buckley

The McLeod Cooperative Power News is the official member publication of McLeod Coop Power Association and focuses on our members, programs and events.

All member story ideas and comments are welcome.
Send to Sue Pawelk at the address shown.

Office Hours:

Monday - Friday
7:45 a.m. - 4:30 p.m.

Phone: 320-864-3148
1-800-494-6272

24-hour outage: 1-800-927-5685

Fax: 320-864-4850

Web site: www.mcleodcoop.com

Gopher State One Call 811 or 1-800-252-1166

McLeod Cooperative Power Association is an equal opportunity provider and employer.

The Co-op has money for these former members

We are looking for current mailing addresses of the following former Co-op members who had capital credit checks returned to us by the U.S. Postal Service in 2015-2016. These were for 1996 revenue and a portion of 2014 revenue. Please notify our office if you have a current mailing address for anyone listed or please have the former consumer below contact us directly. Thank you for your help.

ADAMIETZ, MARK BROWNTON, MN	BUSKE, JAMES & GAYLE WESTFIELD, WI	FISCHER, R THOMAS ZUMBRO FALLS, MN	HEEREN, ELAINE & THOMAS HUTCHINSON, MN	KRABILL, DONALD WABASHA, MN	MEYER, MICHAEL & TRACY HUTCHINSON, MN	PHILLIPS, KIM D ANNANDALE, MN	SCHERMANN, BENILDA WINSTED, MN	TETRICK, BRYAN & BRITNEY PELZ MOUND, MN
ANDERSEN, FRED ST PAUL, MN	CAL SPAS OF HUTCHINSON HUTCHINSON, MN	FISCHER, SCOTT W ST PAUL, MN	HJELTER, LARRY D NEW AUBURN, MN	KRAFT, DAVID ANNANDALE, MN	MIDWEST OUTDOOR ADVERTISING ST PAUL, MN	PIERSON, JASON S MESA, AZ	SCHMID, MICHELLE SHAKOPEE, MN	REUBERT, MARK SILVER LAKE, MN
ANDERSON, AUDREY V ELK RIVER, MN	CANNADAY, JOHN HUTCHINSON, MN	FISHER, MICHAEL G HUTCHINSON, MN	HOECKE, REUBEN MELROSE, MN	KRUEGER, ARNOLD W WINTHROP, MN	MILLER, LAVERNE HECTOR, MN	PIKER, NORMAN BURNSVILLE, MN	SCHMIDT, BRIAN HUTCHINSON, MN	TOOLSON, MARY E C/O GEORGINA LEWIS QUAPPPELLA SK, CANADA
ANDERSON, DARRELL D WINTHROP, MN	CARLSON, FRANCES COON RAPIDS, MN	FLORES, BRAD EAU CLAIRE, WI	HOWARD, DUANE SEBEKA, MN	KRUEGER, JOSEPH GLENCOE, MN	MILLER, MAGDALEN C/O RONALD MILLER COLOGNE, MN	PLATH, ERWIN C COKATO, MN	SCHMIDT, TRACY PLATO, MN	TOWNE, PHILIP MAPLE PLAIN, MN
ANDERSON, DON BIG FLAT, AR	CARLSON, KARI MINNEAPOLIS, MN	FOSS, TIMOTHY L SILVER LAKE, MN	HUEBERT, DAN W HUTCHINSON, MN	KRUSE, JOHN C DEER RIVER, MN	MILLS, TERRY HUTCHINSON, MN	POLESKY, WALDEN & EMMANUEL MORGAN, MN	SCHRUPP, CURTIS M NORWOOD, MN	TRAXLER, JEFFREY T HUTCHINSON, MN
ANDERSON, GENE HECTOR, MN	CHEVALIER, CHARLES MENAHGA, MN	FREITAG, DOUGLAS LAKE LILLIAN, MN	HUDSON, BRIAN HUTCHINSON, MN	KUGLER, DAVID & SUZANNE WACONIA, MN	MOLDAN, GLEN & CALVIN R LINDMEIER NEW ULM, MN	POMERLEAU, MICHAEL & NORMA DELANO, MN	SCHUETTE, LARRY HUTCHINSON, MN	TWISS, LINDA C/O SANDI GERKE WINTHROP, MN
ANDERSON, LYLE A C/O STAN ANDERSON ST PAUL, MN	CHRISTENSEN, LUVERNE DASSEL, MN	FULLERTON, CLINT D BUFFALO, MN	HUTCHISON, JOHN ALTOONA, WI	KUNZE, PETER WACONIA, MN	MORTENSON, ANN C/O MARK MORTENSON MINNEAPOLIS, MN	PORATH, PAUL NORTH MANKATO, MN	SCHUETTE, STEVE C WINTHROP, MN	TYDLACKA, MICHAEL WASKISH, MN
ANVID, TINA MARIE SAGINAW, MN	CHURCHILL COOP INC OLIVIA, MN	GALLIPO, CRAIG & PAM HOPKINS, MN	JAKES, GENE SALEM, OR	LA MOUNTAIN, ROBERT GAYLORD, MN	MOTOROLA CRC SCHAUMBURG, IL	PORTELE, FRANK HUTCHINSON, MN	SCHWARZE, LAURENCE C/O SUSAN SCHWARZE MINNEAPOLIS, MN	VAN DAELE, JOY I WINSTED, MN
ARENS, MICHAEL CLOQUET, MN	COBURN, LYNDEN FARMINGTON, MN	GEHRKE, ALVIN WINTHROP, MN	JANKE, LORRAINE H WACONIA, MN	LAMECKER, KENNETH DARWIN, MN	MORTENSON, ANN C/O MARK MORTENSON MINNEAPOLIS, MN	POWERS, MICHELLE BROOKLYN CENTER, MN	SEEMANN, PAUL H CARVER, MN	VAN ORT, SHANNON HUTCHINSON, MN
ARENS, PATRICK CROSSLAKE, MN	COHRS, MIKE A WATERTOWN, MN	GEHRKE, ANTHONY & BETH COKATO, MN	JANSEN, PAT DANUBE, MN	LANDAAS, JAMES GAYLORD, MN	MOTOROLA CRC SCHAUMBURG, IL	PRASHEK, MARK COLUMBIA, MO	SEHR, PAUL HUTCHINSON, MN	VAN SIGNS C/O MARLIN VANDESTEEG BIG LAKE, MN
ARNESON, ROBERT J HUTCHINSON, MN	COOK, J R SILVER LAKE, MN	GENUNG, J T PEQUOT LAKES, MN	JASZCZAK, MICHAEL HUTCHINSON, MN	LANGE, DANIEL GLENCOE, MN	NAHLOVSKY, RICHARD & ANNE LILLIAN, AL	PRIOR, NEAL HUTCHINSON, MN	SELLER, MARLAN D HUTCHINSON, MN	VANDREEL, KIRK J NEW LONDON, WI
AYDT, WANDA HUTCHINSON, MN	COWAN, THOMAS D MINNEAPOLIS, MN	GIESE, RICK J MINNEAPOLIS, MN	JELINEK, HELEN L MONTICELLO, MN	LARSON, SCOTT A HUTCHINSON, MN	NELSON, BONNIE K LOWELL, OR	RAATZ, ROBERT PERHAM, MN	SELLER, MYRON H C/O AMY YUREK SILVER LAKE, MN	VOLK, DAVID C/O CHERI HAMNER ALBION, IA
BARKER, JOHN MINNEAPOLIS, MN	DD CABLE HOLDINGS INC DENVER, CO	GILMER, BRIAN CLAREMONT, MN	JENSEN, MARVIN HUTCHINSON, MN	LEE, DONALD E FT MYERS, FL	NELSON, DAVID D FT MYERS, FL	RADUENZ, JEFFREY S DASSEL, MN	SETH, BRUCE LESTER PRAIRIE, MN	VOTAVA, STEVEN WINSTED, MN
BARNES, CURTIS ROSEVILLE, MN	DAMMANN, ORLIN W GLENCOE, MN	GINDORFF, ROBERT NORWOOD, MN	JENSEN, PETER H EMMONS, MN	LEE, GEO BRAHAM, MN	NELSON, DOUGLAS B MINNEAPOLIS, MN	RAVASKA, LASSE HUTCHINSON, MN	SETTERGREN, KENNETH LITCHFIELD, MN	WALDNER, TIMOTHY GLENCOE, MN
BARRY, STEVEN H MONTICELLO, UT	DANIELSON, MERLYN HUTCHINSON, MN	GODING, ROBERT WHITEHOUSE, TX	JOHNSON, CHRISTOPHER B MAYER, MN	LEMBKE, THOMAS J HUTCHINSON, MN	NELSON, EUGENE HECTOR, MN	REINER, JON C/O BRIAN REINER STEWART, MN	SHADDRICK, KELLEY RICE, MN	WALKER, TIMOTHY HUTCHINSON, MN
BASSETT, RONALD & MARIONETTA NORWOOD, MN	DAVES, STEVEN NEW ULM, MN	GOEBEL, KURT & KIM DENT CLEVER, MO	JOHNSON, DAVID L ST BONI, MN	LEUTHNER, KENNETH C/O BEVERLY LEUTHNER ST BONI, MN	NELSON, FRANK OSAKIS, MN	REINERT, HELEN C/O KATHY ANDREEN HUTCHINSON, MN	SHAW, WAUNITA EXCELSIOR, MN	WALSTAD, SCOT & LISA HUTCHINSON, MN
BATDORF, EARL NEW AUBURN, MN	DECKER, CHAD BROWNTON, MN	GOENNER, ANDREW J HUTCHINSON, MN	JOHNSON, JEROME D C/O BRADLEY JOHNSON YOUNG AMERICA, MN	LINK, CODY T DASSEL, MN	OSAKIS, MN NELSON, STUART & CAROL HUTCHINSON, MN	REINERT, HELEN C/O KATHY ANDREEN HUTCHINSON, MN	SHAW, WAUNITA EXCELSIOR, MN	WASSMUND, GERALD PLACERVILLE, CA
BENTZ, HILDEGARD L WACONIA, MN	DEL FIACCO, ROGER ROSEMOUNT, MN	GREAT PLAINS SUPPLY INC WAITE PARK, MN	JOHNSON, JERRY J HUTCHINSON, MN	DASSEL, MN LINSTRAND, JASON D CARVER, MN	OLSON, SARAH INVER GROVE HEIGHTS, MN	REINERT, HELEN C/O KATHY ANDREEN HUTCHINSON, MN	SHEEHAN, BRIAN OLIVIA, MN	WELDON, KENNETH M HUTCHINSON, MN
BETHKE, SOPHIE STEWART, MN	DOERING, LAWRENCE GRAND CANYON, AZ	GRIMM, MILAN BUFFALO LAKE, MN	JOHNSON, STEPHEN D DAVENPORT, FL	ELIZABETH PLAINFIELD, IL	OLSON, SCOTT M MONTROSE, MN	REINERT, HELEN C/O KATHY ANDREEN HUTCHINSON, MN	SHERMAN, DENNIS & MAR MONTICELLO, MN	WERNER, JEFF & LINDA OLSON MOUND, MN
BICKMAN, MICHAEL J LESTER PRAIRIE, MN	DOERR, WALTER C/O LARRY DOERR BUFFALO LAKE, MN	GROCHOW, MRS RUTH HAMEL, MN	JONES, DARRYL WINSTED, MN	LUEHRING, STEVE CENTRALIA, MO	ODONNELL, EDWARD MINNEAPOLIS, MN	REINERT, HELEN C/O KATHY ANDREEN HUTCHINSON, MN	SHOCKMAN, KENNETH MINNEAPOLIS, MN	WILSON, DAVID & KAY ASKOV, MN
BIRRENKOTT, ELIZABETH & MATTHEW NYHAMMER MINNETRISTA, MN	DEGOLIER, DANIEL CHASKA, MN	HALE, ERIC & JAMIE ST PAUL, MN	JUSTINGER, RICHARD C BLOOMINGTON, MN	LYLE, TOM DANUBE, MN	ODONNELL, EDWARD MINNEAPOLIS, MN	REINERT, HELEN C/O KATHY ANDREEN HUTCHINSON, MN	SHOCKMAN, KENNETH MINNEAPOLIS, MN	WILSON, DAVID & KAY ASKOV, MN
BJORKLUND, THOMAS R ST PAUL, MN	DRIESEN, KENT W ELK RIVER, MN	HAMILTON, GREG ST LOUIS PARK, MN	KABLE, DAN JACKSON, MN	MACK, ROANLD YELM, WA	ODONNELL, EDWARD MINNEAPOLIS, MN	REINERT, HELEN C/O KATHY ANDREEN HUTCHINSON, MN	SHOCKMAN, KENNETH MINNEAPOLIS, MN	WILSON, DAVID & KAY ASKOV, MN
BOBS BODY & PAINT SHOP C/O BOB VANORDEN HILTON HEAD ISLAND, SC	DRONEN, GEORGE INDIAN RIVER, MI	HAND, MICHELE HUTCHINSON, MN	KALLIS, THOMAS F SILVER LAKE, MN	MADSEN, LEON M HUTCHINSON, MN	ODONNELL, EDWARD MINNEAPOLIS, MN	REINERT, HELEN C/O KATHY ANDREEN HUTCHINSON, MN	SHOCKMAN, KENNETH MINNEAPOLIS, MN	WILSON, DAVID & KAY ASKOV, MN
BOGUTA, CRAIG & LAURIE DARWIN, MN	DUESTERHOEFT, RUTH HUTCHINSON, MN	HANES, PATRICK J BUFFALO, MN	KANDT, RUSSELL BUFFALO LAKE, MN	MADSEN, LEON M HUTCHINSON, MN	ODONNELL, EDWARD MINNEAPOLIS, MN	REINERT, HELEN C/O KATHY ANDREEN HUTCHINSON, MN	SHOCKMAN, KENNETH MINNEAPOLIS, MN	WILSON, DAVID & KAY ASKOV, MN
BOLLIN, STEVE & KARIE DARWIN, MN	EBERLE, DAVID DASSEL, MN	HANSEN, BENJAMIN & NANETTE HUTCHINSON, MN	KARG, KAREN M HUTCHINSON, MN	MADSEN, LEON M HUTCHINSON, MN	ODONNELL, EDWARD MINNEAPOLIS, MN	REINERT, HELEN C/O KATHY ANDREEN HUTCHINSON, MN	SHOCKMAN, KENNETH MINNEAPOLIS, MN	WILSON, DAVID & KAY ASKOV, MN
BRIESEMEISTER, AARON HUTCHINSON, MN	ELIAS, RYAN BIG LAKE, MN	HANSEN, DARRELL D HUTCHINSON, MN	KEITH, JENNIFER L LAFAYETTE, MN	MADSEN, LEON M HUTCHINSON, MN	ODONNELL, EDWARD MINNEAPOLIS, MN	REINERT, HELEN C/O KATHY ANDREEN HUTCHINSON, MN	SHOCKMAN, KENNETH MINNEAPOLIS, MN	WILSON, DAVID & KAY ASKOV, MN
BROWNLEE & HAYES INC MARSHALL, MN	ELSHOFF, ROBERT M C/O MARY HALEY DAVENPORT, IA	HARBARTH, EILEEN WINTHROP, MN	KEPLER, JEFFREY D HUTCHINSON, MN	MADSEN, LEON M HUTCHINSON, MN	ODONNELL, EDWARD MINNEAPOLIS, MN	REINERT, HELEN C/O KATHY ANDREEN HUTCHINSON, MN	SHOCKMAN, KENNETH MINNEAPOLIS, MN	WILSON, DAVID & KAY ASKOV, MN
BUCKENTIN, JEREMY & PAIGE HARTY NORWOOD, MN	ERICKSON, BLAIR WACONIA, MN	HARS DORF, THOMAS GLENCOE, MN	KIEKE, SHEILA HUTCHINSON, MN	MADSEN, LEON M HUTCHINSON, MN	ODONNELL, EDWARD MINNEAPOLIS, MN	REINERT, HELEN C/O KATHY ANDREEN HUTCHINSON, MN	SHOCKMAN, KENNETH MINNEAPOLIS, MN	WILSON, DAVID & KAY ASKOV, MN
BUERSKIN, MICHAEL C/O DANIEL BUERSKIN LAKELAND, MN	FARNSWORTH, DOUGLAS P BROOK PARK, MN	HARMENING, JAMES HOWARD LAKE, MN	KING, JODI A HUTCHINSON, MN	MADSEN, LEON M HUTCHINSON, MN	ODONNELL, EDWARD MINNEAPOLIS, MN	REINERT, HELEN C/O KATHY ANDREEN HUTCHINSON, MN	SHOCKMAN, KENNETH MINNEAPOLIS, MN	WILSON, DAVID & KAY ASKOV, MN
BUITENHUIS, GEERTJE E C/O MARGARET ABBOTT HUTCHINSON, MN	FELTMANN, RYAN GREEN ISLE, MN	HARTMAN, MICHAEL LAFAYETTE, MN	KING, JODI A HUTCHINSON, MN	MADSEN, LEON M HUTCHINSON, MN	ODONNELL, EDWARD MINNEAPOLIS, MN	REINERT, HELEN C/O KATHY ANDREEN HUTCHINSON, MN	SHOCKMAN, KENNETH MINNEAPOLIS, MN	WILSON, DAVID & KAY ASKOV, MN
BURKE, TIMOTHY & DEB HECTOR, MN	FERNDALE TREE FARM INC WAYZATA, MN	HATCHER, GARY COKATO, MN	KOESTER, RUSSELL BUFFALO LAKE, MN	MADSEN, LEON M HUTCHINSON, MN	ODONNELL, EDWARD MINNEAPOLIS, MN	REINERT, HELEN C/O KATHY ANDREEN HUTCHINSON, MN	SHOCKMAN, KENNETH MINNEAPOLIS, MN	WILSON, DAVID & KAY ASKOV, MN
BUSHAW, JAMES ST CLOUD, MN	FINNEY, MICHAEL CHASKA, MN	HAUER, MILDRED WINTHROP, MN	KOGLIN, AUDREY HUTCHINSON, MN	MADSEN, LEON M HUTCHINSON, MN	ODONNELL, EDWARD MINNEAPOLIS, MN	REINERT, HELEN C/O KATHY ANDREEN HUTCHINSON, MN	SHOCKMAN, KENNETH MINNEAPOLIS, MN	WILSON, DAVID & KAY ASKOV, MN
	FISCHER, CHRIS L WATERTOWN, MN	HAWES, JENNIFER J GLENCOE, MN	KORF, SHANE & DANIELLE CONWAY HUTCHINSON, MN	MADSEN, LEON M HUTCHINSON, MN	ODONNELL, EDWARD MINNEAPOLIS, MN	REINERT, HELEN C/O KATHY ANDREEN HUTCHINSON, MN	SHOCKMAN, KENNETH MINNEAPOLIS, MN	WILSON, DAVID & KAY ASKOV, MN
				MADSEN, LEON M HUTCHINSON, MN	ODONNELL, EDWARD MINNEAPOLIS, MN	REINERT, HELEN C/O KATHY ANDREEN HUTCHINSON, MN	SHOCKMAN, KENNETH MINNEAPOLIS, MN	WILSON, DAVID & KAY ASKOV, MN
				MADSEN, LEON M HUTCHINSON, MN	ODONNELL, EDWARD MINNEAPOLIS, MN	REINERT, HELEN C/O KATHY ANDREEN HUTCHINSON, MN	SHOCKMAN, KENNETH MINNEAPOLIS, MN	WILSON, DAVID & KAY ASKOV, MN
				MADSEN, LEON M HUTCHINSON, MN	ODONNELL, EDWARD MINNEAPOLIS, MN	REINERT, HELEN C/O KATHY ANDREEN HUTCHINSON, MN	SHOCKMAN, KENNETH MINNEAPOLIS, MN	WILSON, DAVID & KAY ASKOV, MN
				MADSEN, LEON M HUTCHINSON, MN	ODONNELL, EDWARD MINNEAPOLIS, MN	REINERT, HELEN C/O KATHY ANDREEN HUTCHINSON, MN	SHOCKMAN, KENNETH MINNEAPOLIS, MN	WILSON, DAVID & KAY ASKOV, MN
				MADSEN, LEON M HUTCHINSON, MN	ODONNELL, EDWARD MINNEAPOLIS, MN	REINERT, HELEN C/O KATHY ANDREEN HUTCHINSON, MN	SHOCKMAN, KENNETH MINNEAPOLIS, MN	WILSON, DAVID & KAY ASKOV, MN
				MADSEN, LEON M HUTCHINSON, MN	ODONNELL, EDWARD MINNEAPOLIS, MN	REINERT, HELEN C/O KATHY ANDREEN HUTCHINSON, MN	SHOCKMAN, KENNETH MINNEAPOLIS, MN	WILSON, DAVID & KAY ASKOV, MN
				MADSEN, LEON M HUTCHINSON, MN	ODONNELL, EDWARD MINNEAPOLIS, MN	REINERT, HELEN C/O KATHY ANDREEN HUTCHINSON, MN	SHOCKMAN, KENNETH MINNEAPOLIS, MN	WILSON, DAVID & KAY ASKOV, MN
				MADSEN, LEON M HUTCHINSON, MN	ODONNELL, EDWARD MINNEAPOLIS, MN	REINERT, HELEN C/O KATHY ANDREEN HUTCHINSON, MN	SHOCKMAN, KENNETH MINNEAPOLIS, MN	WILSON, DAVID & KAY ASKOV, MN
				MADSEN, LEON M HUTCHINSON, MN	ODONNELL, EDWARD MINNEAPOLIS, MN	REINERT, HELEN C/O KATHY ANDREEN HUTCHINSON, MN	SHOCKMAN, KENNETH MINNEAPOLIS, MN	WILSON, DAVID & KAY ASKOV, MN
				MADSEN, LEON M HUTCHINSON, MN	ODONNELL, EDWARD MINNEAPOLIS, MN	REINERT, HELEN C/O KATHY ANDREEN HUTCHINSON, MN	SHOCKMAN, KENNETH MINNEAPOLIS, MN	WILSON, DAVID & KAY ASKOV, MN
				MADSEN, LEON M HUTCHINSON, MN	ODONNELL, EDWARD MINNEAPOLIS, MN	REINERT, HELEN C/O KATHY ANDREEN HUTCHINSON, MN	SHOCKMAN, KENNETH MINNEAPOLIS, MN	WILSON, DAVID & KAY ASKOV, MN
				MADSEN, LEON M HUTCHINSON, MN	ODONNELL, EDWARD MINNEAPOLIS, MN	REINERT, HELEN C/O KATHY ANDREEN HUTCHINSON, MN	SHOCKMAN, KENNETH MINNEAPOLIS, MN	WILSON, DAVID & KAY ASKOV, MN
				MADSEN, LEON M HUTCHINSON, MN	ODONNELL, EDWARD MINNEAPOLIS, MN	REINERT, HELEN C/O KATHY ANDREEN HUTCHINSON, MN	SHOCKMAN, KENNETH MINNEAPOLIS, MN	WILSON, DAVID & KAY ASKOV, MN
				MADSEN, LEON M HUTCHINSON, MN	ODONNELL, EDWARD MINNEAPOLIS, MN	REINERT, HELEN C/O KATHY ANDREEN HUTCHINSON, MN	SHOCKMAN, KENNETH MINNEAPOLIS, MN	WILSON, DAVID & KAY ASKOV, MN
				MADSEN, LEON M HUTCHINSON, MN	ODONNELL, EDWARD MINNEAPOLIS, MN	REINERT, HELEN C/O KATHY ANDREEN HUTCHINSON, MN	SHOCKMAN, KENNETH MINNEAPOLIS, MN	WILSON, DAVID & KAY ASKOV, MN
				MADSEN, LEON M HUTCHINSON, MN	ODONNELL, EDWARD MINNEAPOLIS, MN	REINERT, HELEN C/O KATHY ANDREEN HUTCHINSON, MN	SHOCKMAN, KENNETH MINNEAPOLIS, MN	WILSON, DAVID & KAY ASKOV, MN
				MADSEN, LEON M HUTCHINSON, MN	ODONNELL, EDWARD MINNEAPOLIS, MN	REINERT, HELEN C/O KATHY ANDREEN HUTCHINSON, MN	SHOCKMAN, KENNETH MINNEAPOLIS, MN	WILSON, DAVID & KAY ASKOV, MN
				MADSEN, LEON M HUTCHINSON, MN	ODONNELL, EDWARD MINNEAPOLIS, MN	REINERT, HELEN C/O KATHY ANDREEN HUTCHINSON, MN	SHOCKMAN, KENNETH MINNEAPOLIS, MN	WILSON, DAVID & KAY ASKOV, MN
				MADSEN, LEON M HUTCHINSON, MN	ODONNELL, EDWARD MINNEAPOLIS, MN	REINERT, HELEN C/O KATHY ANDREEN HUTCHINSON, MN	SHOCKMAN, KENNETH MINNEAPOLIS, MN	WILSON, DAVID & KAY ASKOV, MN
				MADSEN, LEON M HUTCHINSON, MN	ODONNELL, EDWARD MINNEAPOLIS, MN	REINERT, HELEN C/O KATHY ANDREEN HUTCHINSON, MN	SHOCKMAN, KENNETH MINNEAPOLIS, MN	WILSON, DAVID & KAY ASKOV, MN
				MADSEN, LEON M HUTCHINSON, MN	ODONNELL, EDWARD MINNEAPOLIS, MN	REINERT, HELEN C/O KATHY ANDREEN HUTCHINSON, MN	SHOCKMAN, KENNETH MINNEAPOLIS, MN	WILSON, DAVID & KAY ASKOV, MN
				MADSEN, LEON M HUTCHINSON, MN	ODONNELL, EDWARD MINNEAPOLIS, MN	REINERT, HELEN C/O KATHY ANDREEN HUTCHINSON, MN	SHOCKMAN, KENNETH MINNEAPOLIS, MN	WILSON, DAVID & KAY ASKOV, MN
				MADSEN, LEON M HUTCHINSON, MN	ODONNELL, EDWARD MINNEAPOLIS, MN	REINERT, HELEN C/O KATHY ANDREEN HUTCHINSON, MN	SHOCKMAN, KENNETH MINNEAPOLIS, MN	WILSON, DAVID & KAY ASKOV, MN
				MADSEN, LEON M HUTCHINSON, MN	ODONNELL, EDWARD MINNEAPOLIS, MN	REINERT, HELEN C/O KATHY ANDREEN HUTCHINSON, MN	SHOCKMAN, KENNETH MINNEAPOLIS, MN	WILSON, DAVID & KAY ASKOV, MN
				MADSEN, LEON M HUTCHINSON, MN	ODONNELL, EDWARD MINNEAPOLIS, MN	REINERT, HELEN C/O KATHY ANDREEN HUTCHINSON, MN	SHOCKMAN, KENNETH MINNEAPOLIS, MN	WILSON, DAVID & KAY ASKOV, MN
				MADSEN, LEON M HUTCHINSON, MN	ODONNELL, EDWARD MINNEAPOLIS, MN	REINERT, HELEN C/O KATHY ANDREEN HUTCHINSON, MN	SHOCKMAN, KENNETH MINNEAPOLIS, MN	WILSON, DAVID & KAY ASKOV, MN
				MADSEN, LEON M HUTCHINSON, MN	ODONNELL, EDWARD MINNEAPOLIS, MN	REINERT, HELEN C/O KATHY ANDREEN HUTCHINSON, MN	SHOCKMAN, KENNETH MINNEAPOLIS, MN	WILSON, DAVID & KAY ASKOV, MN
				MADSEN, LEON M HUTCHINSON, MN	ODONNELL, EDWARD MINNEAPOLIS, MN	REINERT, HELEN C/O KATHY ANDREEN HUTCHINSON, MN	SHOCKMAN, KENNETH MINNEAPOLIS, MN	WILSON, DAVID & KAY ASKOV, MN
				MADSEN, LEON M HUTCHINSON, MN	ODONNELL, EDWARD MINNEAPOLIS, MN	REINERT, HELEN C/O KATHY ANDREEN HUTCHINSON, MN	SHOCKMAN, KENNETH MINNEAPOLIS, MN	WILSON, DAVID & KAY ASKOV, MN
				MADSEN, LEON M HUTCHINSON, MN	ODONNELL, EDWARD MINNEAPOLIS, MN	REINERT, HELEN C/O KATHY ANDREEN HUTCHINSON, MN	SHOCKMAN, KENNETH MINNEAPOLIS, MN	WILSON, DAVID & KAY ASKOV, MN
				MADSEN, LEON M HUTCHINSON, MN	ODONNELL, EDWARD MINNEAPOLIS, MN	REINERT, HELEN C/O KATHY ANDREEN HUTCHINSON, MN	SHOCKMAN, KENNETH MINNEAPOLIS, MN	WILSON, DAVID & KAY ASKOV, MN
				MADSEN, LEON M HUTCHINSON, MN	ODONNELL, EDWARD MINNEAPOLIS, MN	REINERT, HELEN C/O KATHY ANDREEN HUTCHINSON, MN	SHOCKMAN, KENNETH MINNEAPOLIS, MN	WILSON, DAVID & KAY ASKOV, MN
				MADSEN, LEON M HUTCHINSON, MN	ODONNELL, EDWARD MINNEAPOLIS, MN	REINERT, HELEN C/O KATHY ANDREEN HUTCHINSON, MN	SHOCKMAN, KENNETH MINNEAPOLIS, MN	WILSON, DAVID & KAY ASKOV, MN
				MADSEN, LEON M HUTCHINSON, MN	ODONNELL, EDWARD MINNEAPOLIS, MN	REINERT, HELEN C/O KATHY ANDREEN HUTCHINSON, MN	SHOCKMAN, KENNETH MINNEAPOLIS, MN	WILSON, DAVID & KAY ASKOV, MN
				MADSEN, LEON M HUTCHINSON, MN	ODONNELL, EDWARD MINNEAPOLIS, MN	REINERT, HELEN C/O KATHY ANDREEN HUTCHINSON, MN	SHOCKMAN, KENNETH MINNEAPOLIS, MN	WILSON, DAVID & KAY ASKOV, MN
				MADSEN, LEON M HUTCHINSON, MN	ODONNELL, EDWARD MINNEAPOLIS, MN	REINERT, HELEN C/O KATHY ANDREEN HUTCHINSON, MN	SHOCKMAN, KENNETH MINNEAPOLIS, MN	WILSON, DAVID & KAY ASKOV, MN
				MADSEN, LEON M HUTCHINSON, MN	ODONNELL, EDWARD MINNEAPOLIS, MN	REINERT, HELEN C/O KATHY ANDREEN HUTCHINSON, MN</		

Flower grower walks the talk of reducing his carbon footprint



Al Huff has operated his Jacobs 20 kW wind turbine since 2006. It is located in a field near his home for the best wind availability.

The ultimate description of a Co-op member trying to reduce their carbon footprint would be someone who heats their home with a ground source heat pump and some passive solar, participates in the Co-op's water storage program, operates a wind generator, participates in the Co-op's community solar garden, drives an electric car, is a Wellspring wind subscriber, planted 30,000 trees for posterity, grows thousands of flowers and plants, and recycles everything possible. Alvin Huff fits that definition perfectly. He does all the things listed above and truly walks the talk when it comes to trying to reduce his carbon footprint.

Alvin has been a Cooperative member officially since 1983, however, previous to that (since 1948) his parents farmed the land in Glencoe Township where he resides today. Then for many years Alvin farmed the land. Today, he rents out his farm land but is still busier than ever growing tulips, peonies, and gladiolus to sell as cut flowers at area farmer's markets.

For about 12 years he sold flowers and vegetables at the Minneapolis Farmer's Market. He stopped selling there two years ago when the Farmer's Market moved from its Nicollet Mall location to Hennepin Avenue. Now he takes his cut flowers and peony plant business to local markets in Hutchinson, Glencoe and Arlington. Alvin really enjoys participating in the farmer's markets. He goes to Hutchinson on Wednesday afternoons and Saturday mornings, Glencoe on Thursday afternoons, and Arlington on Monday nights.

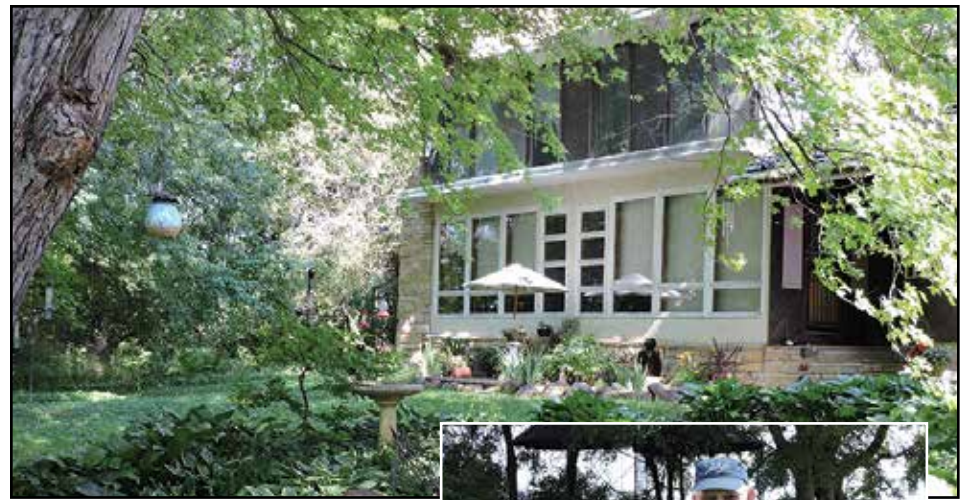
Alvin has cut back on growing tulips since he stopped doing the Minneapolis market. "Locally, everyone has their own tulips," said

Alvin, so now he focuses on the peonies, gladiolus, and a limited crop of squash and cucumbers. This year Alvin planted more than 8,000 gladiolus bulbs, which are just starting to bloom. When they are all in bloom he calls it "flower therapy". These flowers are in addition to the many flower gardens and planted landscape projects of his daughter, Holly, who also lives on the farm.

The Huffs have been long time participants in the Co-op's water storage program. In 2010 they installed a six-ton horizontal loop ground source heat pump with a gas backup, to replace their fuel oil furnace. The heat pump operates on the Co-op's off-peak Dual Fuel program for winter heating and the Cycled Cooling program for summer cooling. The heat pump operates on the low off-peak electric rate. Alvin limited his loop installation cost by doing his own backhoe trenching work.

"Our heating bill was cut from \$6,000 per year with fuel oil, to \$2,500 per year with the ground source heat pump," said Alvin. His daughter Holly added, "Plus the comfort", meaning that the house now stays consistently heated in the winter and cooled in the summer. They get a little added assistance from passive solar during the winter with their south facing windows. They are big supporters of the load management programs which help members install more energy efficient systems and save money.

In 2010 Alvin also purchased a Toyota Prius electric hybrid car. He gets 56 miles per gallon on the highway. In six years he has put 70,000 miles on it and is very pleased with it. When asked why he bought the electric car, he responded, "To reduce my carbon footprint". Alvin is committed to



The Huff home uses passive solar windows on the south to take advantage of winter sunshine and help heat part of their home. Al and his daughter Holly have made numerous gardens, flower patches, ponds, and other artistic landscaping projects.

doing what he personally can to make our world a healthier place to live.

Holly noted, "We are farmers. We recycle everything." Alvin added with a proud grin, "I'm even going to be 100% recycled. I'm leaving myself to the U of M when I die."

Erecting a 125 foot, 10,000-pound wind turbine and generator in 2006 was one of Alvin's biggest ways to lessen his carbon footprint. He connected his Jacobs 20 kW wind turbine to the grid and he participates with the Co-op on a net-metering program. Most years the turbine will produce between 15,000 and 20,000 kWh. However, during years when it experienced mechanical problems the production was lower, with one year below 8,000 kWh. Alvin is also a longtime participant in the Co-op's Wellspring wind subscription program.

A year or two ago, Alvin considered installing solar panels at his property. He got some quotations to install an array and after some research determined that it was less costly and had less risk to invest in the Co-op's community solar project. Now he gets a credit on his electric bill each month for the energy produced by the seven solar panels he subscribed to. He, or his daughter Holly, will continue to receive those solar credits each month for 20 years.

It is Alvin's philosophy that by investing in renewable energy, you are sort of pre-paying your electricity bill 20 years in advance, which is an investment for the good of future generations.



Al Huff grows tulips, peonies, and gladiolus, which he sells at local farmer's markets. Al planted 8,000 gladiola bulbs and this is the first one to bloom this summer. Within two weeks his entire patch of gladiolus will be in full bloom.

With that same value, Alvin has planted 30,000 spruce and red pine trees on some property up north. He planted them for posterity so that future generations will benefit from the trees and their contributions to the environment.

After graduating from college, Alvin raised hogs and chickens. He worked 30 years for the U.S. Postal Service and served four years as a McLeod County Commissioner. He served on the Minnesota executive board of AARP, was named by Gov. Arne Carlson to serve on the board of Minnesota State Colleges and Universities (MNSCU) and was appointed to the Minnesota SAIL Program which aimed to keep senior citizens independent in their own homes.

ALWAYS
CALL
BEFORE YOU
DIG

Call 811

Is your ductwork delivering?

By Pat Keegan and Amy Wheelless

Dear Pat: I recently moved from a home with wall-mounted heaters to one with central heat, central air and a duct system. How can I ensure my ducts are working efficiently? - Carla

Dear Carla: You may have received flyers in the mail with offers for air-duct cleaning and claims that doing so will improve the air quality and efficiency of your home. However, duct cleaning may not always be necessary for air quality, and there is no indication that just cleaning your air ducts will improve your system's efficiency.

Duct cleaning may be necessary if:

- There is visible mold in your duct system or there was a recent flood that caused mold or mildew in your home.
- There is something in the ductwork impeding airflow, like debris or an infestation. Major renovations or new construction can put construction debris into the duct system, so post-construction is an ideal time to consider duct cleaning.
- Your heating registers are releasing dust into the air.
- Home residents have allergies or asthma problems that have not been alleviated by other changes.



Regularly vacuuming your air filters can extend their life and help your heating system work more efficiently.

Photo Credit: Janwikifoto

While duct cleaning may not always be necessary, regularly changing your air filters can help your heating and cooling system work more efficiently. How often you change them depends on how much your system runs, whether you have pets and whether you periodically vacuum your air filters. For the average home, air filters should be changed four to six times a year.

Though duct cleaning may not do much for the efficiency of your systems, duct sealing is important for saving energy and lowering utility costs, particularly if your ducts are in unconditioned spaces, like a crawlspace or an uninsulated attic. In a typical home, 20 to 30 percent of heated or cooled air escapes through unsealed gaps and holes in the duct system, which can cost you money and make your home less comfortable. You wouldn't put up with a leaking water pipe, so why should you put up with a leaking air duct?



A Duct Blaster test can show you how leaky your ductwork is.

Photo Credit: Ket555

The best way to assess the condition of your home's ductwork is to have it tested by a professional home energy auditor who can conduct a Duct Blaster test. If you can easily access your ducts, you might get by with a visual inspection, which will identify the larger holes and disconnections. Where ducts meet or where they connect to a heating register are common places to find leaks. A professional trained in ductwork can help you identify and fix the gaps and leaks you may not be able to see. Talk to your Co-op to find the right person for the job.



Mastic can be used to seal small gaps and leaks in your ductwork.

Photo Credit: Weatherization Assistance Program

Once gaps and leaks have been identified, you can work to seal your ducts. Small duct leaks can be sealed with mastic, a type of caulk. Larger duct leaks and disconnections may require additional lengths of duct, mechanical fasteners or special heat-resistant tape. Do not use duct tape—ironically, it is not designed to adhere well to ducts.

If you have ducts in unconditioned areas, like an attic or crawlspace, your ducts could be wasting energy by heating or cooling the surrounding air, even if there are no leaks in the ductwork. Insulation around the ducts can help reduce this energy loss. Consider adding insulation to the unconditioned space, such as in the attic or basement, which can further increase the efficiency and comfort of your home.

Industry News

Energy from waste: greenhouse gas winner or pollution loser?

What electricity-generating technology results in net greenhouse gas (GHG) reductions, not just zero new emissions? According to the U.S. Environmental Protection Agency (EPA), it's not nuclear, not wind, not solar.

Give up? Waste-to-energy (WTE, known to some as "trash-to-cash"), according to the EPA and a recent analysis by the Department of Energy's National Renewable Energy Laboratory (NREL) is the only electric generating technology that actually reduces GHG emissions as it makes power. The EPA bases its calculations on methane emissions from landfills. Methane is a much more potent GHG than carbon dioxide (CO₂) in the short term (although methane spends less time than CO₂ in the atmosphere). Burning the trash that produces methane in landfills reduces overall GHGs. A 2011 NREL analysis looked at lifecycle GHG emissions from electricity generating technologies. It found that wind has very small lifecycle emissions, with nuclear a bit above those, followed by solar. While all of the conventional low-carbon technologies were slightly positive in terms of GHG emissions in lifecycle terms (the energy that went into making and erecting the technologies as well as emissions from operations), energy from waste was the only option that reduced GHGs.

Note: Great River Energy operates the Elk River Energy Recovery Station, a waste-to-energy power plant in Elk River that burns up to 1,000 tons of processed waste per day to generate up to 170,000 megawatt hours of renewable electricity per year.

~POWER Magazine

An attack on the grid? Power execs push back on Koppel claims

Eight months after veteran broadcast journalist Ted Koppel published a book predicting a devastating cyber attack on the U.S. power grid, leaders of the utility industry are sounding off over what they say is an exaggerated claim. "We're speaking out on it now because we think there is an important story to tell," Scott Aaronson, the managing director for cyber and infrastructure security at the Edison Electric Institute, said last week at a briefing for reporters.

According to Koppel, who anchored the ABC news program *Nightline* from 1980 to 2005, the U.S. is likely to eventually suffer a cyber attack on its grid that could leave millions of Americans in the dark, short of water and food, and generally desperate for months. The risk is considerable, Koppel claims, because the U.S. government and the utility industry are ill prepared to fend off such an assault by foreign adversaries and to help the nation recover from it.

Not so, Aaronson told reporters. As he did at recent House and Senate hearings on cyber security, Aaronson ticked off a number of steps taken by utilities and the government to address the threat, including standards requiring stepped-up protective measures.

Moreover, utilities are increasingly coordinating to share information and expertise and to test their preparedness, including a drill conducted last fall by the industry's North American Electric Reliability Corporation, in which 4,400 participants from the industry and governments in the U.S., Canada and Mexico simulated coordinated cyber and physical attacks on the grid. In the event of an incursion that disables electric infrastructure, power providers are expanding programs to share transformers and other equipment, and replace damaged equipment relatively quickly, Aaronson said.

~USA Today

May Outage Summary

During May there were 48 outages reported on the Cooperative's system. Material or equipment failures and squirrels were the leading causes of outages in May.

The three largest outages of the month all affected members served from the Helen Substation near Glencoe. The largest outage was on Friday, May 27 shortly after midnight. It affected 674 members north of Glencoe. Power was out for one hour and 24 minutes. The outage was caused by an OCR equipment problem. The second largest outage was on May 29 at 6:27 p.m. and it affected 162 members. The cause was an insulator failure.

Members were out for one hour and 28 minutes. The third largest outage was Monday, May 9 at 1:30 p.m. An insulator failure caused 201 members north of Glencoe to be out of power for 48 minutes.

Most outages affect only one or two members. They are frequently caused by small animals, trees in the line, equipment failure, or motor vehicle/machinery accidents. Larger outages affecting hundreds of members at a time are usually caused by transmission outages, storms, equipment failure to substation equipment, or accidents.

Restoration time on weekend and evening outages, when line crews are called out from home, usually take a little longer to get back on than outages when crews are already out working on the project.

MCPA News Ads — Free want ad service for members

Please limit your ad to nine words. Use the coupon printed here or available at McLeod Cooperative's front desk to submit your ad. Ads will be printed for one month only. Please submit a new ad if you want it published more than one month. Include your name and address, which will be used for identification purposes only. Ads must be received by July 28 to be included in the August issue.

Please run this ad in the next MCPA News

Name: _____

Address: _____

Telephone number: _____

Please check ad category

- Giveaway
- For Rent
- For Sale
- Wanted

Remember to limit your ad to nine words!

1 _____ 2 _____ 3 _____

4 _____ 5 _____ 6 _____

7 _____ 8 _____ 9 _____

Clip and Send to: McLeod Cooperative Power, ATTN: Classified Ads
P.O. Box 70, Glencoe, MN 55336

For Sale - Miscellaneous

- 36W X 79L brown screen door, roll up hidden screen. \$25. 320-224-7133
- Frigidaire 30in electric range, working condition. \$75. 320-848-6392
- Older General Electric refrigerator. Works good. \$50. 320-848-6392
- Allis Chalmers 100% cotton fabric 40in wide. \$10/yard. 320-864-4484
- Sears frostless upright freezer, good shape, 71in X 32in X 25in. \$65. 763-227-7198
- 50 vintage women's hats b/o. 320-328-4041
- Antique fainting couch b/o. 320-328-4041
- 16ft car hauler trailer, low style. \$1,000. 320-864-3668
- Vintage Hereford saddles, horse tack, horse buggies 150+ years. 320-587-5599
- Queen headboard/footboard/frame. \$75. 320-420-2649
- Concertina, black, very good k of c, 5 switch in case. 507-237-8682

- Cabelas Northern Flight youth blind. New in box. \$150. 507-647-5414
- Large pet cages/carriers, metal & plastic w/doors. \$10/each. 320-587-7292

For Sale - Farm

- 1946 Oliver 70, restored, runs, starts good. \$2,500. 320-864-3668
- 4400 JD combine. 1977 + chopper, 4 row narrow head. Diesel good shape. \$2,200.
- Steel fence post. 320-864-4496
- 2 tractor tires 18.4-28 6 ply. 320-864-4496
- Steel t-post, wood posts, gates woven-wire insulators. 320-587-4437

Wanted

- VCR including remote, good working order, any brand. 952-467-2103

These want ads are designed to help members buy items from or sell items to other members, or rent their property to members. They are not designed to advertise services or for-profit business pursuits. That is why we do not offer a services column and do not accept advertisements for commercial businesses.

Disclaimer — McLeod Cooperative Power Association (MCPA) assumes no liability for the content of, or reply to, any item posted. The party posting any advertisement assumes complete liability for the content of, and all replies to, any advertisement and for any claims against MCPA as a result thereof, and agrees to indemnify and hold MCPA harmless from all costs, expenses, liabilities and damages resulting from, or caused by, any advertisement or reply thereto.

Electric Trade Associations, Environmental Advocates, Utilities and Manufacturers Unite to Pursue Valuable Storage Capability

Energy and environmental stakeholders are uniting around “community storage” to help solve the electric industry’s energy storage challenge. The Community Storage Initiative announced the support of key industry groups, including the nation’s utility trade associations, environmental groups, manufacturers and more than a dozen individual utilities.

Community storage refers to a spectrum of utility-sponsored programs that aggregate electric storage resources available throughout the community, such as water heaters and electric vehicles, to improve the efficiency of electric energy services for consumers. Community storage programs offer the industry practical steps to rapidly increase the amount of energy storage available and also integrate more renewable resources.

The nation’s 50 million residential electric water heaters collectively represent a significant – and vastly underutilized – energy storage resource capable of leveraging substantial environmental and cost benefits according to new research commissioned by the National Rural Electric Cooperative Association, Great River Energy, the Natural Resources Defense Council and the Peak Load Management Alliance.

Initiative members are already implementing community storage programs. Through the Community Storage Initiative, they will be working together to evolve those programs.

Like community solar, community storage enables consumers and utilities to share the system-wide benefits of energy storage — environmental benefits, lower costs and grid optimization — in communities large and small across the country. Such programs maximize the value of distributed energy resources, many of which are already available to participate in energy storage programs through simple retrofits and program design.



The Initiative will be chaired by Great River Energy Member Services and Marketing Director Gary Connett, and will be sponsored by the following: National Rural Electric Cooperative Association (NRECA), American Public Power Association (APPA), Edison Electric Institute (EEI), Natural Resources Defense Council (NRDC), and Peak Load Management Alliance (PLMA).

A full list of supporters and brief descriptions of their community storage efforts is available at communitystorageinitiative.com.

Initiative members are conducting a range of innovative community storage programs, including grid-interactive water heating, electric vehicle charging, grid-interactive space heating, ice storage technology, and residential battery storage.

Research conducted by The Brattle Group and sponsored by the Community Storage Initiative’s founding members recognized that the nation’s 50 million residential electric water heaters collectively represent a significant and vastly underutilized energy storage resource capable of leveraging substantial environmental and cost benefits.

Air source heat pump is the smart replacement for a failed air conditioner



If you have an old or inefficient air conditioner, it could be a good time to get a quote from a heating and cooling contractor on a new higher efficiency air source heat pump (ASHP). It is a good time to check out if an ASHP will work for your home in advance of your old air conditioner failing to keep your home cool during the hottest days of summer.

What can an ASHP provide that an air conditioner can't?

- An ASHP provides high efficiency summer cooling just like an air conditioner but it can also do up to 50% of a home's heating. It does the heating on the fall and spring days and mild winter days at a much higher efficiency than a propane or oil furnace.
- It can significantly reduce the gallons of fossil fuel you purchase each year.
- A high efficiency ASHP, installed by a certified quality contractor, qualifies for a \$480 to \$630 rebate, for heat pumps with a 14.5 or higher Seasonal Energy Efficiency Ratio (SEER). There are no rebates for air conditioners.

• ASHPs usually qualify to participate in the Dual Fuel and Cycled Cooling programs, giving members half-price off-peak electric rates. Members save more than 50% on electricity rates for heating and cooling when using the ASHP.

Call the Co-op to visit with an energy expert on the advantages of an ASHP. We can help you verify that your contractor is on the certified quality contractor list and can help answer your questions on rebates, efficiencies, and off-peak programs.

Call toll-free 1-800-494-6272.



AC tune-ups eligible for credit once every two years

Last chance for 2016 air conditioning tune-up program.

Just schedule a tune-up of your central air conditioner or air source heat pump (unit must be at least 5 years old and in working condition to qualify) and when your licensed professional HVAC contractor performs the service work, have them complete the rebate coupon. Send the completed rebate form to the Cooperative with a copy of the contractor's invoice. His tune up must include the items on the coupon. After the Co-op receives your documentation, we will credit your electric bill \$25 within 4-6 weeks.

3 Ways to Fight Allergies and Save Energy



It's that time of year. For many, symptoms such as itchy eyes, runny nose and a sore throat are a sign that seasonal allergies are in full bloom. Also, warmer temperatures mean that air conditioning costs soon will be putting the heat on your energy budget. Fortunately, there are three simple solutions that will help you combat both problems.

1. Change your air filter

A dirty, clogged filter slows the flow of air, causing your cooling system to work harder and use more energy. At the same time, dust and debris trapped in the filter can circulate back into your home, decreasing indoor air quality and exacerbating allergy symptoms. A fresh air filter will help lessen the negative effects of allergies and improve the efficiency of your air conditioning system.

2. Maintain your air conditioner

Your air conditioning system does more than just keep you cool, it helps exhaust pollutants and control humidity levels inside your home. Hire a qualified professional to inspect and clean your air

conditioning system before the start of the cooling season. You'll have a healthier, more comfortable indoor environment all summer long. A regular tune-up keeps your air conditioner operating at peak efficiency, reducing summer energy bills.

3. Freshen up your ventilation

A healthy indoor environment requires fresh air. Unfortunately, hot, humid outside air is good for allergens like mold spores, but not so good for your allergy symptoms. Heat recovery ventilators (HRVs) offer a smart way to save energy while controlling humidity levels inside your home. HRVs use the relatively cool air that your air conditioning system is venting outdoors in the summer to cool down hot incoming outdoor air. It's an efficient way to improve your indoor environment without driving up cooling costs.

Protecting yourself from pollen

There are a number of things you can do around your home and in your daily life to help reduce your allergy symptoms from plant pollen. Ragweed and other weeds are prolific producers of pollen allergens. Ragweed season runs from August to November but pollen levels usually peak by mid-September in many areas of the country. Pollen counts are highest in the morning, and on hot, dry, windy days.

- Between 5:00 and 10:00 in the morning, stay indoors. Save outside activities for late afternoon or after a heavy rain, when pollen levels are lower.
- Keep windows in your home and car closed to lower exposure to pollen. Keep cool with air conditioners. Don't use window or attic fans.
- Use a dryer, not a line outside; dry your clothes and avoid collecting pollen on them.

Air Conditioner/Heat Pump Check List

Eligible for credit a maximum of once every 24 months

Owner _____
 Acct. # _____
 Address _____
 Location # _____
 Phone # _____
 Company doing Tune-Up _____
 Technician's Name _____
 Company Phone # _____

CHECK LIST

Brand Name _____
 Model # _____
 Serial # _____
 Tons/BTU Rating _____ SEER Rating _____

- Clean Outdoor Unit
- Clean and Inspect "A" Coil
- Check Blower Belt
- Compressor Motor Amp Reading Check
- Compressor Amp Reading Check
- Blower & Oil
- Blower Motor Amp Reading Check
- Check Filter
- Check Refrigerant Level & Pressure
- Blow Out Drain Line
- Visual Inspection of Cooling System

Recommendations _____

Technician Signature _____

Date _____

Why are summer rates higher?

Summer residential energy rates are one penny higher per kWh than the rest of the year. June, July, and August energy use is billed at 12.75 cents per kWh. The other 9 months of the year the rate is 11.75 cents per kWh. The bill members receive in mid-July is for energy used during the month of June.

Summer rates are higher because of increased demand on the hottest days. McLeod Co-op Power pays more for wholesale power in the summer, which is why members pay more for

energy used during June, July and August.

Members participating in the Co-op's off-peak programs, especially the Cycled Cooling Program, are able to reduce what they pay for energy each month. For example, if your water heater and air conditioner or heat pump are on the off-peak rate, you are only paying 5.88 cents per kWh for all your summer water heating and home cooling. Off-peak makes for a much lower summer electric bill. Call the Co-op's energy experts today to get signed up for off-peak programs. When you are on the Cycled Air Program you can run your air conditioner a lot more and have it cost a lot less!

Notice to Cogenerators

In compliance with Minnesota Rules Relating to Cogeneration and Small Power Production, Chapter 7835, McLeod Cooperative Power Association is required to interconnect with and purchase electricity from cogenerators and small power producers that satisfy the conditions of a qualifying facility. McLeod Cooperative Power will provide free information to all interested members regarding rates and interconnection requirements. An interconnection application is required and subject to approval from the cooperative before a qualifying facility interconnects and operates in parallel with the cooperative's distribution system. Any disputes over interconnections, sales and purchases are subject to resolution by the Minnesota Public Utilities Commission. For more details, visit www.mcleodcoop.com or call Sue Pawelk at 1-800-494-6272.

Operation RoundUp dollars at work in our communities



Lennie Albers, executive director of the McLeod Emergency Food Shelf, accepts a big check for \$2,000 from McLeod's members who participate in Operation RoundUp. Presenting the check was Bob Thomes of MCPA.



Executive Director of the McLeod County Historical Society and Museum, Lori Pickell-Stangel, thanked Co-op employee Bob Thomes for the \$2,000 donation from the Co-op's Operation RoundUp fund.



The McLeod County Historical Society and Museum includes many displays and exhibits like the one shown above. At this time they are featuring a special exhibit on fire departments, antique equipment and gear, and historical fires of McLeod County.

Two recipients of Operation Round Up funds in 2016 were the McLeod County Historical Society & Museum and the McLeod County Emergency Food Shelf. Funds come from members who round up their electric bills to the nearest whole dollar amount and give the change to Operation RoundUp, as well as sources of matching funds, MCPA employee contributions, and other donations MCPA receives for the fund.

"It is good for participating members to see where their change is going and what a benefit their donations can be to many local communities and organizations," said Customer Service Manager Sue Pawelk. "The Co-op would like to see more members participate. It is easy and painless to sign-up. It is a tax-deductible contribution of not more than \$11.88 per year (averages \$6.00 per year) and the receipt of your contributions shows right on your electric bill," added Pawelk.

The \$2,000 donation the Co-op's Operation Round Up organization awarded to the McLeod County Historical Society & Museum was matched with another \$2,000 in Burich grant funds. These funds helped the museum qualify for an additional grant from the Minnesota Heritage and Legacy Fund. It will all go towards a larger overall project of replacing windows and large inner and outer entry doors, and a new HVAC system in the facility to assure preservation of historical artifacts in the proper environment. The project improvements will provide greater energy efficiency in the building, improved temperature and humidity levels, and provide glass with proper UV protection to help preserve artifacts.



The Operation RoundUp funds were matched by larger grants and will be used for window, door and HVAC improvements.

Historical Society Executive Director Lori-Pickell-Stangel said they are hopeful the improvements will be made in 2017. They have already had an energy efficiency, heat loss, and humidity level assessment done so they will be able to measure the results of improvements following the project completion.

McLeod County Historical Society and Museum is open to the public several days a week. They have exhibits for viewing, a gift shop, research center, and they offer educational programs. Visit them at the northwest corner of Hwy. 7 & School Road in Hutchinson. Check out their web site for hours and details.

McLeod Emergency Food Shelf was also a recipient of Operation Round Up funding this year. The \$2,000 donation will be used to help purchase food and maintain a consistent grocery inventory. Last year, the McLeod Emergency Food Shelf served

1,790 households within the county with 6,400 distributions of food. During times when donations are lower, the funding from Operation Round Up and other sources is critical to help keep shelves stocked.

The food shelf distributes food at 808 E. 12th Street in Glencoe and also at 498 Hwy. 7 E in Hutchinson. Residents in need are allowed one visit every 30 days. They partner with Second Harvest Heartland Food Bank and/or local grocers to get the best prices available on nutritional staples, which are often perishable items such as eggs, cheese, produce and meat.

Yes, sign me up for Operation Round Up. I understand that my bills will be rounded up to the next dollar amount and the proceeds will be used for local charitable programs.

Name: _____

Address: _____

City: _____ Zip Code: _____

Account #: _____

Signature: _____