

# McLeod Cooperative Power NEWS

February 2016

## In this issue...



Room humidifiers improve health and lower bills... 4



Power line worker scholarship offered ..... 6

Official publication of



## Plan to attend the 2016 Annual Meeting

The Cooperative's Annual Meeting is planned for **Tuesday, April 12 at the Hutchinson Event Center.** Doors will open at 8:30 a.m. with old time musical entertainment by Marvin Bulau & Verne Schlueter beginning at 8:45 a.m. Members from Districts 7, 8, and 9 who have not voted by mail can register and cast their ballot for director in their district. The business

meeting will begin at 10:00 a.m. There will be prize drawings and lunch following the business meeting. Grand prize is a \$300 electric bill credit. Visit the booths to learn more about community solar, load management programs, and Heartland Security Services. Mark your calendars for April 12.

## Experience Washington D.C.



*Time for high school juniors and seniors to apply*

High school juniors and seniors have until March 4, 2016 to apply for the Cooperative's Washington Youth Tour competition. One local youth will win an all-expense paid trip to Washington D.C. June 11-16, 2016 from the Cooperative.

For over 40 years, electric cooperatives have sponsored the annual Rural Electric Youth Tour by sending their high school students to experience first hand, the essence that is our republic. An information packet is available upon request to any high school junior or senior. Just call the Co-op at 1-800-494-6272 or visit [www.mcleodcoop.com](http://www.mcleodcoop.com). You will have until March 4, 2016 to submit your application. Students complete a questionnaire and application to qualify. Please encourage your child or grandchild to apply. They need only attend a high school in or reside in McLeod, Renville, Sibley or western Carver County.

## Operation Round Up donation applications are being accepted until March 1



*This is a great year for new organizations to apply*

Community and civic groups, emergency responders and other 501(c)3 non-profit organizations are welcome to apply to McLeod Cooperative Power's Operation Round Up Trust for donation assistance. The trust is able to donate funds to worthy local projects in McLeod, Renville, Sibley or Carver Counties. Funding is from the generosity of electric cooperative members who round up their electric bills.

Application forms are available by calling the Cooperative at 1-800-494-6272 or they are on the Co-op's website at [www.mcleodcoop.com](http://www.mcleodcoop.com). Applications for funding must be completed and returned to the Cooperative by March 1, 2016.

## Cost recovery fee provides fairness between distributed generation systems and fellow members

### *Fee only applies to distribution systems starting on or after March 1, 2016*

In 2015 the Minnesota Legislature sought to return a level of fairness to how the electric distribution grid is paid for by authorizing electric cooperatives and municipal utilities to charge a cost recovery fee on distribution generation facilities (wind and solar). The fee will allow electric cooperatives, like McLeod Co-op Power, to recover some of the cost shift that occurs between distributed generators and the rest of the membership.

There is a fixed cost to deliver electric power to our members; the poles, the wires, the equipment and the people that get the power to you and keep it safe and reliable. This fixed cost is recovered in two ways, through a monthly fixed charge (now called system delivery charge) and as a portion of your kilowatt-hour rate. Putting some of the fixed cost within the kWh rate had historically been done on the assumption that the more energy a member used, the more demand they put on the grid and the more they should pay to maintain it. Distributed generators demand as much (or more) from the grid than the rest of the membership. But because they offset some or all of

their energy usage, they no longer pay their fair share to maintain the grid.

The intent of the cost recovery fee is just that, to recover some of the cost shift and ensure that the cost causers are also cost payers. The fee is based on calculating the size of the distributed generation facility, the usage variation among the members, and the unique nature of the electric cooperative. The cost recovery fee is applied equitably on a per kW basis with a statewide allowance of 3.5 kW for electric cooperatives (the state average for size of rooftop solar

*Continued on page 3*

MCLEOD COOPERATIVE POWER ASSOCIATION  
GLENCOE, MINNESOTA  
NOTICE OF ANNUAL MEETING  
OF THE MEMBERS

TO THE MEMBERS OF MCLEOD COOPERATIVE POWER ASSOCIATION:

You are hereby notified that the Regular Annual Meeting of the Members of the McLeod Cooperative Power Association will be held at Hutchinson Event Center at 1005 Hwy. 15 S., Plaza 15, in the city of Hutchinson, County of McLeod, State of Minnesota, on April 12, 2016, at 10:00 a.m. to take action upon the following matters:

1. The reports of officers, directors and committees.
2. The election of directors of this association for director districts numbers 7, 8 and 9. The polls for the election of directors will be opened at the meeting place at 8:30 a.m. and will be closed at 10:15 a.m. on the date of the meeting, for voting by members who have not returned their ballots by mail.
3. To transact any other business which may properly come before said annual meeting or any adjournment thereof.

Dated at Glencoe, Minnesota this 26th day of January, 2016.



Doug Kirtz, Secretary

## Explanation of election process

This is the time of year that we focus on planning for the Annual Meeting as well as the director election process. I believe it is important for you, our members, to understand how this process works and how you can participate in electing a person to represent your district on the MCPA Board of Directors.

The members of McLeod Cooperative Power have, over the years, adopted a democratic and fair process for electing members to the Board of Directors. This procedure is detailed in the Cooperative's Articles of Incorporation and By-Laws. It provides for two names on the ballot, so a director never runs unopposed. It also affords members the opportunity to play a part in the process by volunteering to serve on the Nominating Committee, possibly running for a board seat, and voting to elect candidates from their district.

The Articles and By-Laws allow for each director to be elected by residents of his or her district. This means candidates are elected by their neighbors, usually members living in their township or surrounding townships. Directors are not elected at-large by all the voters from the whole Co-op. This process has served the Cooperative very well.

Members may volunteer to serve on the Nominating Committee for their district. If three members do not volunteer for the Nominating Committee, then the director from that district must find district members to fill the remaining

seats on the committee. The Nominating Committee has the task of selecting two names to appear on the ballot. It is their job to find two qualified candidates even if no one expresses interest to serve. They may choose the incumbent director if running for re-election, any members who express an interest in serving as a director or other members from the district who agree to be a candidate.

Any person who desires to have their name on the ballot, but who has not been selected by the Nominating Committee, can obtain the signatures of 20 MCPA members in their district and submit it to the Cooperative Secretary at least 25 days prior to the Annual Meeting. This is how a member may apply by Nomination By Petition to be a candidate. So using this method, we sometimes have had three or more candidates competing for one seat in a district election.

Director candidates cannot be close relatives of current directors or employees. This protects anyone from having an unfair advantage. Each candidate must be a member in good standing and possess leadership qualities.

All active members in voting districts are mailed a ballot before the Annual Meeting. Members may cast their ballot by mail, return it to the Co-op in person or bring it to the Annual Meeting. Votes are counted by the Nominating Committee under the supervision of the Co-op's legal counsel.

## Submit Nomination by petition for director candidacy by March 18

Cooperative members residing in Districts 7, 8, or 9 may petition to have their name added to the slate of candidates for the 2016 director election in their district. To have another name, in addition to the two candidate names selected by the nominating committee, on the ballot, you may file a nomination by petition.

The petition must be signed by 20 or more McLeod Cooperative Power Association electric members residing in your district and it must be submitted to the cooperative secretary not less than 25 days prior to the Annual Meeting. The last day that a petition can be submitted is March 18, 2016.

The cooperative secretary shall post at the Cooperative office the names of additional nominations and also persons selected by the nominating committee.

**District 7 includes:** Hale, Rich Valley and Glencoe Townships in McLeod County and part of Stockholm Township in Wright County.

**District 8 includes:** Melville, Palmyra, Martinsburg, Bandon, Norfolk, Wellington, and Bird Island Townships in Renville County, and Grafton, Moltke, and Bismarck Townships in Sibley County.

**District 9 includes:** Hollywood, Camden, Watertown and Young America Townships in Carver County, and parts of Woodland and Franklin Townships in Wright County.

## Board of Directors

**District 1**  
Oria Brinkmeier, **Lester Prairie**

**District 2**  
Joe Griebie, **Brownton**

**District 3**  
Roger Karstens, Vice President  
**Hutchinson**

**District 4**  
Doug Kirtz, Secretary-Treasurer  
**Hector**

**District 5**  
Allan Duesterhoeft, **Hutchinson**

**District 6**  
Gary Burdorf, **Arlington**

**District 7**  
Randy Hlavka, GRE Representative  
**Silver Lake**

**District 8**  
Keith Peterson, President  
**Hector**

**District 9**  
Gerald Roepke, Asst. Secretary-Treasurer  
**New Germany**

## McLeod Cooperative Power News

USPS 2220  
Periodicals Postage Paid at Hutchinson, MN  
POSTMASTER: Send address changes to  
McLeod Cooperative Power News  
P O Box 70, Glencoe, MN 55336-0070

The **McLeod Cooperative Power News** is published monthly for \$4.84 per year for members and \$8 per year for non-members by McLeod Cooperative Power Association  
1231 Ford Ave. North, Glencoe, MN 55336-0070

Editor: Sue Pawelk  
General Manager: Carrie L. Buckley

The McLeod Cooperative Power News is the official member publication of McLeod Coop Power Association and focuses on our members, programs and events.

All member story ideas and comments are welcome.  
Send to Sue Pawelk at the address shown.

**Office Hours:**  
Monday - Friday  
7:45 a.m. - 4:30 p.m.

**Phone: 320-864-3148**  
**1-800-494-6272**  
**24-hour outage: 1-800-927-5685**  
**Fax: 320-864-4850**  
**Web site: www.mcleodcoop.com**

Gopher State One Call 811 or 1-800-252-1166

McLeod Cooperative Power Association is an equal opportunity provider and employer.



## Cost recovery fee

Continued from page 1

facilities is between 3.5 kW and 5 kW).

The cost recovery fee is not punitive, and will return a level of fairness to how the electric distribution grid is paid. As at-cost energy providers, electric cooperatives believe that cost causers should be cost payers. This fee goes a long way toward returning to that equitable approach.

### How is the cost recovery fee calculated?

The cost recovery fee seeks to recoup that portion of the fixed costs of serving the distributed generator that are included in the kWh rate. The fee is calculated using a cost of service approach. The formula is standardized for all cooperatives, however, the fee will be different for each cooperative based on the true cost of serving the member, the kWh rate, and the current fixed charge. Because the cost shift is different based on the size of the distributed generation facility, the fee is applied per kW of installed distributed generation that exceeds 3.5 kW. The cost of the service calculation is available by contacting McLeod Co-op Power.

### Will the cost recovery fee change?

Yes, the cost recovery fee is based on your local cooperative's rates and will adjust as the rates change. The calculation method will not change, so while the fee may increase or decrease over time, the change will likely be minimal. McLeod Co-op Power will review the fee annually and provide notice of any changes.

### What is the allowance?

There is a difference in how much each member uses based on many different factors, including the size of the home, energy efficiency efforts, and usage needs. This variance was taken into account and applied as an allowance for distributed generation facilities under 3.5 kW. That means a 5 kW system pays only for 1.5 kW of distributed generation. For McLeod Co-op Power, that means a monthly cost recovery fee of \$5.49 (\$3.66 per kW x 1.5 kW) or \$65.88 over the course of a year.

### Is there a cap on the cost recovery fee?

Yes, while larger distributed generators offset much more than their usage and make a profit (paid for by the rest of the membership), we limited our cost recovery fee to an amount that only recovers fixed distribution costs. This limit results in a fee cap, which is unique to each electric cooperative. For McLeod Co-op Power, the cap is \$48/month. The cap means that cost shifts continue for larger distributed generators that haven't properly sized their facilities to the needs (or load) of their property. Currently, the fee will be capped at \$48/month for systems which have a nameplate capacity greater than 16.5 kW and less than 40 kW. Systems smaller than 16.5 kW will pay a monthly amount less than \$48.

### When will this cost recovery fee take effect?

Investing in distributed generation is a big decision with a lot of questions about financing, return on investment, and the expected life of the system. In order to assist our members who are weighing this option and provide certainty, McLeod Cooperative Power will be grandfathering in those distributed generation facilities installed prior to March 1, 2016. Any distributed generation facility over 3.5 kW installed on or after March 1, 2016, will be subject to the recovery fee. The fee will show as a separate line item on the bill of any new net-metering member and it will be labeled "DG Grid Access".

## Manager's Message — by Carrie L. Buckley, General Manager



## Getting to know your cooperative network

Every day, McLeod Cooperative Power is hard at work to make sure all of our members have the electric power they need at the best possible price. And behind the scenes, we are working with a network of cooperatives to make that happen.

We, along with 27 other co-ops, are a member of Great River Energy which produces the power. We helped to create this second tier co-op so that we have more control over power supply and pricing.

It also takes a lot of money to run an electric co-op, so when we need to borrow capital, alongside Rural Utilities Services, we turn to either the National Rural Utilities Cooperative Finance Corporation (CFC) or CoBank. Both of these organizations are also cooperatives. CFC is owned by electric co-ops throughout the country, and CoBank is owned by electric and agricultural co-ops nationwide.

As you know, every month we generate an electric bill that we send to you. We use National Information Solutions Cooperative to ensure we can apply the latest technology, help lower your energy costs and send timely, accurate bills to you.

No business can operate without several different types of insurance, such as general liability, auto and workmen's compensation. So once

again, along with other electric cooperatives across the country, we are members of Federated Rural Electric Insurance Exchange. Along with other electric cooperatives in Minnesota, we are members of Minnesota Rural Electric Trust to provide our workmen's compensation. This allows us to maintain reliable coverage at an affordable price.

It also takes a whole lot of "stuff" to operate an electric co-op, such as poles, wires, transformers and many other items that you may not see. This is why we partnered with other co-ops to create RESCO. The power of this co-op allows us to have quick access to all the materials we need at the best price.

McLeod Co-op Power is also part of the Cooperative Response Center, which allows us to answer your calls 24 hours a day, 365 days a year.

So, while you are a member of one electric co-op, you are actually connected to many other co-ops. And being connected to this cooperative network ensures your needs are met in the most efficient and cooperative way possible.

### Cost Recovery Fee:

During the 2015 legislative session, both the legislature and Governor sought to return a level of fairness to how the electric distribution grid is paid for, by authorizing electric cooperatives and

municipal utilities to charge a cost recovery fee on distributed generation facilities, (wind and solar). The fee will allow electric co-op's like McLeod Cooperative Power, to recover some of the cost shift that occurs between distributed generators and the rest of the membership. As I explained in December's column, not all costs are recovered in our monthly fixed charge, and therefore must be collected through the kilowatt hour charge. Distributed generators demand as much, (or more) from the grid than the rest of the membership. But, because they offset some or all of their energy usage, they no longer pay their fair share to maintain the grid.

At its December board meeting, McLeod Cooperative Power's Board of Directors voted unanimously to begin charging the cost recovery fee starting in March of 2016. The law only allows utilities to begin charging this fee to those distributed generation accounts that connected their electric generating system to the utility after July 1, 2015. The Co-op will "grandfather in" those existing distribution facilities and in fact will only charge the fee to those connecting distributed generation facilities after March 1, 2016. See the article in this newsletter for more details on the cost recovery fee.

## December Outage Summary

December had very few outages. McLeod Cooperative Power had a total of 13 outages, affecting 36 consumers. Seven of those outages were due to squirrels. The outage that affected the most members was caused by motor vehicle or machinery on December 16 about 1:30 in the afternoon in the Hutchinson area. Nineteen members were out of power for 59 minutes.

MCPA finished the year with an average outage time of 124.5 minutes per consumer. Out of these minutes about 55 minutes were due to transmission outages by GRE or Xcel Energy and the other 69 minutes per consumer were due to causes on MCPA's

distribution system (equipment failures, squirrels, machinery accidents, trees, etc.). The 124.5 minutes per consumer is higher than 2014, but slightly lower than an average year.

Most outages affect only one or two members. They are frequently caused by small animals, trees in the line, equipment failure, or motor vehicle/machinery accidents. Larger outages affecting hundreds of members at a time are usually caused by transmission outages, storms, equipment failure to substation equipment, or accidents. Restoration time on weekend and evening outages, when line crews are called out from home, usually take a little longer to get back on than outages when crews are already out working on the project

# Room humidifiers may improve health while lowering winter energy bills

**M**any people suffer during winter from dry air in their homes. From itchy skin to cracked lips and unhealthy sinuses, dry winter air can play havoc with our health and comfort.

Properly humidified indoor air is not only comfortable and healthy for your family, but it can reduce your winter heating bills. Room humidifiers typically use less energy than a 100-watt light bulb. Many models have built-in humidistats that automatically switch the unit on and off, so they consume even less electricity than listed on the unit's nameplate.

Just like sweating outdoors on a low-humidity day makes you feel cooler, the same process occurs indoors in dry air. The amount of moisture evaporation from your skin is greater when the indoor air is excessively dry, so you may actually feel chilly when the indoor air temperature is high enough for comfort. The evaporation of your skin's moisture can also dry your skin, make you itch, and irritate sinuses.

Running a humidifier helps you save energy by reducing the chilling effect of the evaporation of skin moisture. By properly humidifying the air, you can feel comfortable at a lower room temperature. This allows you to set the furnace thermostat lower and you should end up saving much more energy than the humidifier uses.

## Finding the right humidifier

Humidifiers come in two general types: Warm Mist and Cool Mist. While the process used may differ, they both add moisture to the air and which one you choose may come down to personal preference.

Some things to keep in mind when choosing any humidifier:

### Is it easy to clean?

Humidifiers can harbor bacteria if not cleaned regularly. Both the federal Consumer Product Safety Commission and the Environmental Protection Agency warn that emissions from dirty humidifiers can cause health problems, especially if anyone in your family suffers from asthma or allergies. And in a recent safety study, Consumer Reports found that, when it comes to preventing bacteria from being released into the air, antimicrobial features advertised in some models are no substitute for regular cleaning.

Drain, rinse and dry the unit daily. Each week, remove residue with vinegar, disinfect with a bleach solution, then rinse thoroughly.

### Will it be used around children?

Warm mist humidifiers heat water to a boil, then release steam into the air. Due to risk of burns,

caution must be used if you plan to use it in areas inhabited by children.

Some warm mist units include mineral filters to trap deposits from the water. These filters are relatively inexpensive to replace, but they will need to be changed, so include that cost into your buying decision. They generally make little noise.

### Ease of use

Make sure your tabletop or console humidifier is easy to move and that the tank fits easily beneath your faucet. Look for user-friendly controls and clearly visible displays of humidity levels and settings.



Console units do larger areas and are less portable.

### Does it have a humidistat?

Some humidifiers have a humidistat that shuts off the unit when it reaches a preset humidity level. Models without this feature may allow the humidity levels to rise so much that it causes condensation on windows. If your current unit doesn't have this feature, you may purchase a separate hygrometer to monitor humidity levels.

### Which Cool Mist humidifier do you want?

There are basically three kinds of Cool Mist humidifiers: Evaporative, Ultrasonic and Impeller. Evaporative models blow a fan over a wet wick. Spare wicks cost about \$10.



Evaporative models use a fan blowing over a wet wick to add moisture. They are louder and the wick must be replaced.

Ultrasonic humidifiers use a vibrating nebulizer to emit water and make less noise than a fan-operated unit.



Ultrasonic units are less noisy and could be a good choice for bedrooms.

Impeller humidifiers use a rotating disk, rather than a fan, to produce mist and as such usually are also quiet to operate.

The one you choose comes down to personal preference. Compare models, features and benefits. Look at estimated cost of use, not only purchase price. Making your choice may mean you decide to make some trade-offs in efficiency, noise and convenience.

### Sizing your humidifier

First, measure the room you want to humidify to get the square footage. Small humidifiers typically handle a room up to 300 square feet (a 15 ft. x 20 ft. room size).

A medium room (up to 500 square feet) will require a medium-sized humidifier. Both small and medium units can be portable or even table-top units if you prefer.

For rooms 500 to 1,000 square feet, a large floor model humidifier is needed. Console models, whether evaporative or ultrasonic, generate an abundance of moisture into the air.

If you have a forced-air heating system and want to humidify the entire home, you might want to consider a whole-house humidifier. They are plumbed into your home's water supply and tapped into your air ductwork.

Sources: Jim Dulley; Consumer Reports



# Heartland Security paid for itself

For Joe and Karen Becker, having a Heartland Security system in their lake home was something they were very grateful for.

“When we bought the home, it was already installed,” Karen said. They had questioned whether they even needed it, because the lake home is a second vacation home.

“I was at home and I got a call at 6:20 a.m. from Heartland Security letting us know there was a problem in the laundry room of our lake home,” Karen said. “Apparently there was a sensor that had alerted them that the room was too cold.”

Karen called her husband who had already left the home to do chores. He told her to drive over to the lake home and check it out.

“When I got there it was only 42 degrees in the house. We hadn’t been there for about 1-1/2 weeks and we had no idea that something was wrong.”



After some time of investigating and finding no answer, Karen called Joe and had him come over. Apparently the thermostat had gone bad and wasn’t signaling the heat to come on.

“The small amount we pay for Heartland monitoring our system saved us from having to spend thousands of dollars to fix broken pipes, replace flooring, possibly cabinets and even more. It literally paid for itself.”

Heartland Security protects you, your family, and your valuables against any threat using leading-edge technology that is easy to use and affordable. Our 24/7 monitoring will give you peace of mind that your home is protected. Your system is customized to how you live and to fit your budget.

Whether for your own home, a lake home, an elderly loved one, a business or more, Heartland is a full-service security company. Call Heartland today at 888-264-6380 for a quote.

## Industry News

### 2015 sales of lignite coal at ND mines steady

North Dakota’s four lignite mines sold 28.7 million tons of coal in 2015, retaining the same production level as 2014, and up 1 million tons compared to 2013, the Lignite Energy Council reported on Jan. 13. The four large mines are the Freedom, Falkirk, Center and Beulah mines. Most of the lignite mined in the state is used to create electricity, with a smaller portion being used to generate synthetic natural gas and produce fertilizer products.

Lignite-based power plants in North Dakota generate electricity at a cost significantly below that of all coal and natural gas plants nationwide, reducing electricity bills for consumers in North Dakota, Minnesota, South Dakota and Montana, the council said.

“The 28.7 million tons of lignite contains the energy equivalent of 63 million barrels of oil and is enough energy to heat every home in Bismarck for the next 100 years,” said Jason Bohrer, president and CEO of the Lignite Energy Council. “The vast reserves of lignite in North Dakota have yielded approximately 30 million tons of coal every year since 1988 — which is still a drop in the bucket compared to the 800-plus years of recoverable reserves.”

-SNL Financial

### Energy advocates say we’re at tipping point for electric cars

Falling gas prices haven’t hurt the demand for all-electric vehicles, with more than 200,000 of them on America’s highways. That represents a jump of roughly 500 percent over the past two years, according to Environment Minnesota. The tide’s beginning to turn as technology improves and prices come down. Tax incentives help fuel demand, but it’s an expanded charging network that gives owners the confidence to push their range.

Jason Willett is fully convinced that he’ll never own another gas-powered vehicle. He’s been driving an all-electric Nissan Leaf for the past three years, commuting between Stillwater and downtown St. Paul on a single charge.

“It’s cleaner, smoother, quieter, cheaper to run,” he said. “Even with \$2 gas it is cheaper to run.” Willett did it mostly for environmental reasons, but the economics seal the deal. His operational and maintenance costs are a mere fraction of a gasoline vehicle’s.

“There’s almost no maintenance on it. I’ve got 30,000 miles on it and I’ve rotated the tires twice,” he said.

Clean energy advocates say 2016 will be another big year for electric vehicle sales. There are an estimated 3,500 electric vehicles registered in Minnesota.

-WCCO-TV



### Snowmobile safely this winter

Whether you are a recreational snowmobile rider or a diehard sledhead, a fresh snowfall is a taunting invitation to be the first to cut through the untouched powder. Snowmobiling can be a great way to enjoy the long winters we are blessed with – or cursed with – depending on your view, but comes with a number of safety considerations.

In addition to observing state snowmobile regulations and local laws, it’s always a safe practice to drive at moderate speeds and drive defensively. Be especially careful if driving in a power line right of way. Reduce your speed and always be on the lookout for electrical transformer boxes and guy wires – the cables that anchor power poles.

Darkness, fog and deep snow can make them hard to see.

Still, it cannot be stressed enough to stay on marked trails. Marked trails offer signs that alert snowmobilers to trail changes. When you venture off of those marked trails, you put yourself and others with you at risk for coming into contact with objects, such as electrical equipment, hidden under the deep and undisturbed snow.

If you see a downed or sagging power line, notice missing or damaged guy wire covers or have other safety concerns regarding electrical equipment along your ride, contact the local utility or authorities right away.

## Power Line Worker Scholarship Offered



Students accepted into one of Minnesota's three power line technology programs for the 2016-17 school term may apply for a \$500 scholarship. The Cooperative will award one \$500 scholarship for a local student.

If you are graduating from a high school in McLeod, Renville, Sibley or Carver County or are a resident of one of those four counties, and have been accepted into the line worker program at Minnesota West in Jackson, Minnesota State in Wadena or Dakota County Technical College in Rosemount, you are eligible to apply. Applications and informative career brochures are available on the Coop's website or by calling the Cooperative at 1-800-494-6272. Applications must be completed and returned by April 15, 2016.

## MCPA News Ads — Free want ad service for members

Please limit your ad to nine words. Use the coupon printed here or available at McLeod Cooperative's front desk to submit your ad. Ads will be printed for one month only. Please submit a new ad if you want it published more than one month. Include your name and address, which will be used for identification purposes only. Ads must be received by February 28 to be included in the March issue. Thank you!

### Please run this ad in the next MCPA News

Name: \_\_\_\_\_

Address: \_\_\_\_\_

Telephone number: \_\_\_\_\_

**Please check ad category**

- Giveaway
- For Rent
- For Sale
- Wanted

### Remember to limit your ad to nine words!

1 \_\_\_\_\_ 2 \_\_\_\_\_ 3 \_\_\_\_\_

4 \_\_\_\_\_ 5 \_\_\_\_\_ 6 \_\_\_\_\_

7 \_\_\_\_\_ 8 \_\_\_\_\_ 9 \_\_\_\_\_

Clip and Send to: McLeod Cooperative Power, ATTN: Classified Ads  
P.O. Box 70, Glencoe, MN 55336

### For Sale - Miscellaneous

- Pronto electric wheelchair. Used less than 6 months. 320-234-7181
- Electric oak fireplace. Call after 7 p.m. 320-587-6413
- Bedroom furniture. Call after 7 p.m. 320-587-6413
- Sears gas powered 750 watt alternator. 320-395-2085
- 5 gallon fish tank w/stand and accessories. \$10. 320-587-7292

**Cleaning out your garage, attic or spare room? Try listing it for free in the MCPA classifieds.**

*These want ads are designed to help members buy items from or sell items to other members, or rent their property to members. They are not designed to advertise services or for-profit business pursuits. That is why we do not offer a services column and do not accept advertisements for commercial businesses.*

### For Sale - Farm

- Small square grass & alfalfa bales. 320-522-2167
- JD800 swather. 320-522-2167
- 12ft John Deere grain drill, grass seed, hyd lift, on rubber tire. 320-395-2716
- 1994 JD 7300 planter 12X30, 250 monitor. Always Shredded. 320-333-2177
- Log chains. One 8ft and one 14ft. \$100/or offer. 320-310-1987
- NH316 square baler. Excellent condition. Belt thrower. \$4,100. 952-353-2428

**Disclaimer – McLeod Cooperative Power Association (MCPA) assumes no liability for the content of, or reply to, any item posted. The party posting any advertisement assumes complete liability for the content of, and all replies to, any advertisement and for any claims against MCPA as a result thereof, and agrees to indemnify and hold MCPA harmless from all costs, expenses, liabilities and damages resulting from, or caused by, any advertisement or reply thereto.**

## Ridgewater College awards spring semester scholarships with funds from MCPA's unclaimed capital credits

Ridgewater College Foundation awarded three \$500 scholarships to area students for spring semester using funds donated from McLeod Co-op Power's unclaimed capital credits. The three students receiving awards were **Julie Klueckman, Sean Porter, and Josiah Kaminsky.**

### YEAR TO DATE FINANCIALS

Through December	2015	2014
<b>Operating Revenue</b>	<b>\$20,218,632</b>	<b>\$20,664,852</b>
Cost of Purchased Power	\$13,119,659	\$13,341,401
Other Operating Expenses	\$ 6,846,963	\$ 6,569,233
<b>Total Cost of Electric Service</b>	<b>\$19,966,622</b>	<b>\$19,910,634</b>
Operating Margins	<b>\$ 252,010</b>	<b>\$ 754,218</b>
Non Operating Margins	\$ 532,178	\$ 1,145,135
<b>Total Margins</b>	<b>\$ 784,188</b>	<b>\$ 1,899,353</b>
<b>kWh's Sold</b>	<b>184,679,900</b>	<b>185,256,195</b>
<b>Member Services Billed</b>	<b>6,616</b>	<b>6,593</b>
<b>Avg kWh Used, Residential/Month</b>	<b>1,434</b>	<b>1,554</b>

## Retail rates to increase effective March 1, 2016

A retail rate increase will go into effect March 1, 2016. Members will first see this increase on the bills received in April for March energy use.

The Cooperative recently completed a Cost of Service Study to make certain that rates are fair and equitable to all rate classes. A rate study also makes certain that the Cooperative will receive sufficient revenue to continue providing reliable electric service, be able to pay for wholesale energy purchases, and meet its financial/mortgage requirements.

The last time a full rate study and retail rate increase was implemented was almost six years ago in 2010. Since then rates have not increased except for occasional changes via the power cost adjustment, and an increase of the Single Phase Farm & General Service fixed charge to \$27.50 in 2013.

The most significant change will be to the System Delivery Charge (new name given to the

monthly Fixed Charge). For Farm and General Service rate classes, the System Delivery Charge will increase from \$27.50 to \$33.50 per month for single-phase accounts and from \$40.00 to \$52.50 per month for three-phase accounts. With this increase in 2016, MCPA will move to collect about 80% of the actual cost to serve a farm or residential account, as indicated in the Cost of Service Study.

The System Delivery Charge (previously called Fixed Charge) is a monthly cost that MCPA collects from each member to help cover some of the costs of bringing electricity to your home, farm, or business. These delivery costs include investment in substations, taxes, poles, wires, transformers, meters, etc. They also include, in part, our customer service functions, billing expenses, the monthly newsletter, and the cost of restoring power outages. This is the cost MCPA incurs to build, maintain, and deliver electricity to a member, whether they use 1 kilowatt hour or 2,000 kilowatt hours per month.





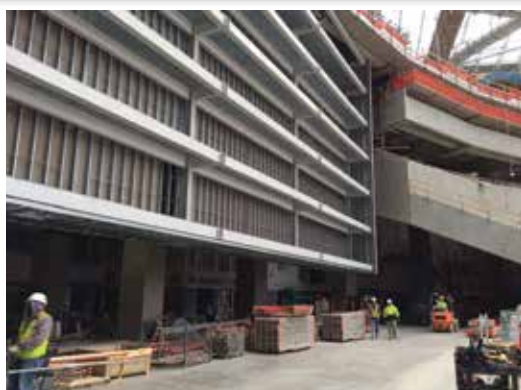
## Please return satisfaction surveys

Members who return their completed satisfaction survey by February 17 and who provide updated e-mail and phone contact information, will be included in the drawing for ten \$100 electric bill credits. We will still accept surveys after that date as the Co-op very much wants your input, however, surveys received after that date will not be in the prize drawing.

A huge THANK YOU to all members who took the time to complete a survey. We greatly appreciate your participation and your opinions.

## End Zone is in sight for stadium electrical work

Electrical work is progressing on the U.S. Bank Stadium, the new home of the Minnesota Vikings starting with the 2016 season. There are more than 200 electrical workers currently on the project and they have completed approximately 60 percent of the total electrical work.



Workers are shown beneath the wall where one of the stadium's video boards will be erected. About 60 percent of the electrical work is completed at the future home of the Minnesota Vikings. It will include more than 12,000 sq. feet of video boards and 2,000 HD TVs.

CCLD's electrical inspectors have also been busy with the flurry of electrical work, sometimes visiting the project site several times a week for inspections. The tally for the power feeders at this point is approximately 400 miles of electrical wire. The total length of branch circuit wires are a long way from being counted but it will probably be in the thousands of miles.

There are three main electrical services that supply U.S. Bank Stadium, each at 13,800 volts with a capacity of 1,200 amperes, for a total electrical supply capacity of approximately 86 megawatts of electrical power. However, more than 90 percent of the stadium's illumination will be provided by energy-efficient LED lighting and there will be an automated, total-energy management system to further control the stadium's energy consumption.

The majority of the stadium's essential electrical infrastructure

will not be noticeable to most of the 70,000 fans, but there will be a whopping 12,560 square feet of video boards to keep everyone entertained and informed. One of the video boards alone will measure about 120 feet by 70 feet. That's in addition to more than 2,000 HD TVs that will be installed throughout the stadium. The electrical infrastructure will supply power to 140 suites and club lounges, more than 400 general concession points of sale and five broadcast booths to keep all of the fans well-fed and entertained on game day.

This article and photo are printed with permission of the CCLD Review, a Division of the Minnesota Department of Labor & Industry.

## Great River Energy sponsors the "Electric Room" at Twin Cities Auto Show



Great River Energy, wholesale power provider to McLeod Co-op Power, is title sponsor of the Electric Room at the 43rd annual Twin Cities Auto Show that will be held March 12-20 at the Minneapolis Convention Center.

Formerly known as the Green Room, the all-new Electric Room will feature the latest technology in electric and hybrid vehicles.

"The Twin Cities Auto Show strives to showcase the green technology available from franchised dealers. Our Electric Room meets that demand," said Scott Lambert, executive vice president of the Greater Metropolitan Auto Dealers Association of Minnesota, producer of the TCAS. "Electric vehicles (EVs) are not only exciting to drive but they provide lower overall impact on the environment. We are thrilled that Great River Energy will be onsite to help educate and answer questions about this emerging technology."

Featured prominently at the event will be Revolt, a first-of-its-kind program that allows McLeod Co-op Power members to upgrade the electricity used to fuel their vehicles to wind energy at no additional cost.

"Through Revolt, we are dedicating wind energy to completely cover the electricity that a consumer uses to fuel an EV for the vehicle's lifetime, which allows consumers to further support the

use of renewable energy," said David Ranallo, Great River Energy Revolt program manager. "We hope to engage with Twin Cities Auto Show attendees through our exhibit and build awareness with consumers around plug-in EVs."

Event attendees who visit the Electric Room can expect to find up to 20 EVs on display as well as Drive Electric Minnesota representatives answering questions about charging stations throughout the Midwest and EV owners who will speak about their experiences.

This year's Twin Cities Auto Show allows consumers to compare more than 525 vehicles from 37 foreign and domestic brands side-by-side without having to drive all over town, and actually get behind the wheel of them. There will be new models in each category, including compacts and family sedans to the latest in SUVs and luxury vehicles. Participants will also be able to hear about financing options and learn about on-board navigation and communication technology.

The weeklong event will include family-friendly activities, appearances from iHeart radio personalities and Minnesota Wild players, and also a ride-and-drive attraction where attendees can hit the streets of Minneapolis in cars from manufacturers like Ford, BMW and Toyota.

For more information about this year's Twin Cities Auto Show — including ticket prices, hours, exhibit details and more — visit [twincitiesautoshow.com](http://twincitiesautoshow.com). For more information about Great River Energy's Revolt program, visit [mnrevolt.com](http://mnrevolt.com).



## Installing new meters to help serve you better

Our system-wide meter upgrade is wrapping up soon. Chapman Metering, our contract installer, is completing meter exchanges in the final two townships in MCPA's service area near Hutchinson at this time.

Chapman Metering employees carry documentation from McLeod Co-op Power, as well as having a MCPA logo/sign on their vehicle. They will knock on your door to attempt to make personal contact before installing the new meter. If no one is home, a door hanger will be left on the premises.

Please call the office if you have any questions or concerns about anyone who comes to your property claiming to represent MCPA.

## How to read your new meter

Members are not required to read their electric meters, however, if a member desires to view their kWh meter reading, kW demand, or voltage information, it is available on the display on the front of the meter. Each display will hold on the screen for about six seconds and then roll to the next display. The order of the displays and their meaning is shown below for any SINGLE PHASE meter. Members with three-phase service can call the Co-op and we will send them the instructions for their meter's display.

### SINGLE PHASE METER DISPLAY

- 888 = SEGMENT CHECK
- TKH = TOTAL KWH (METER READING)
- MXD = MAXIMUM KW DEMAND SINCE MIDNIGHT
- IKW = INSTANTANEOUS KW DEMAND
- VLT = VOLTS
- RKH = RECEIVED KWH = ANY REVERSE POWER FLOW
- GSS = GRIDSTREAM SOFTWARE INFO FOR METER TECHNICIANS

## McLeod Cooperative Power Association Helps Farmers Save Energy with Efficient Equipment Upgrades

McLeod Cooperative Power Association (MCPA), a provider of electricity to homes and businesses in McLeod, Renville, Sibley, and Carver Counties, is rolling out a suite of services and efficient equipment rebates for farming patrons to reduce their energy use.

"Energy efficient farming equipment can really help producers decrease energy costs and improve operations," said Shannon Jerabek, Energy Management Specialist for McLeod Cooperative Power Association.

Through a project funded by the Minnesota Department of Commerce, MCPA partnered with the Clean Energy Resource Teams (CERTs) to survey over 2,500 MCPA farming patrons to better understand general energy use on the farm. A second, farm-specific survey helped identify the age and type of technologies the farms are using.

Based on the responses from farming patrons, MCPA, CERTs, and technology consultant GDS Associates identified several technologies many farms could use to reduce energy costs. These include milk plate coolers, refrigeration heat recovery units, variable speed drives, scroll-type refrigeration compressors, and low-energy livestock waterers. Other technologies are available for hog and poultry producers on a custom rebate basis. Technologies

that save energy may receive a MCPA grant while funding lasts.

McLeod Cooperative Power Association is also providing Farm Energy Assessments to help farmers understand which energy saving technology is best for their operation. A Farm Energy Assessment includes a walk-through of the farm to take inventory of equipment and estimate kilowatt-hour consumption. MCPA Energy Management Specialists also speak with the farmer to understand energy use behavior patterns and determine the best action. "Finding the most bang for your energy buck takes some analysis. We're here to help you crunch the numbers," added Jerabek.

For farms and residents interested in changing out their incandescent light bulbs or replacing their yard lights, MCPA encourages patrons to buy already discounted LED lights from their online store. Notably, nearly two-thirds of MCPA farming patrons who responded still employ Edison-style incandescent bulbs and many use metal halide or mercury vapor lights, even though efficient LED bulbs are readily available with the right light output and color. For more information and pricing, check out MCPA's online LED store ([www.energysavers.coop/mcleod/rebates?AFFID=202066](http://www.energysavers.coop/mcleod/rebates?AFFID=202066)) or the Clean Energy Resource Teams' Right Light Guide ([mncerts.org/lighting/guide](http://mncerts.org/lighting/guide)).

This Conservation, Applied Research & Development (CARD) project is funded through the MN Department of Commerce, Division of Energy Resources. It serves to develop a replicable curriculum for other rural electric cooperatives to use when working with farming constituents to save energy and avoid building costly new power generation facilities.

If you are interested in farm energy services, contact McLeod Cooperative Power Association directly at 1-800-494-6272.

About MCPA: Established in 1935, McLeod Cooperative Power is a member-owned cooperative that provides electricity to more than 6,000 residents, businesses, and industries in central Minnesota, primarily in McLeod, Renville, Sibley and Carver counties.

About CERTs: The Clean Energy Resource Teams — or CERTs — are a statewide partnership with a shared mission to connect individuals and their communities to the resources they need to identify and implement community-based clean energy projects. CERTs is a partnership of the University of Minnesota Extension Regional Sustainable Development Partnerships, Great Plains Institute, Southwest Regional Development Commission, and the Minnesota Department of Commerce, Division of Energy Resources.

