

McLeod Cooperative Power NEWS

May 2017

In this issue...



Tree cutting requests3



LED Bulb Rebate.....8

Official publication of



www.mcleodcoop.com



Co-op to help sponsor youth baseball clinic



Association. The event is free to participants.

10 a.m. session for 6-9 year olds
11:30 a.m. session for 10-13 year olds
at the Arlington Baseball Park on May 27

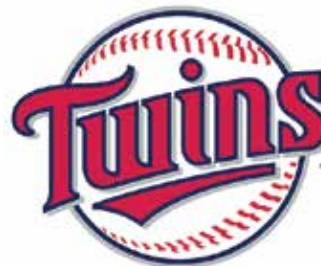
Bring your children or grandchildren. There is no charge for the event. Equipment is provided except participants should bring a glove.

In case of inclement weather, the clinic will be moved to Sibley East Senior High School. For more details visit www.playballmn.com

The Minnesota Twins and Great River Energy are sponsoring a 2017 Play Ball! Youth Clinic on Saturday, May 27 in Arlington. The event will be hosted by McLeod Co-op Power and the Arlington Baseball

TAKE ME OUT TO THE BALLGAME

Join the Co-op for an afternoon at Target Field



Minnesota Twins take on the Chicago White Sox, Thursday, June 22 at 12:10 p.m.

Bring yourself, bring your spouse, or bring the grandkids. The Co-op will host 50 members and guests, on a first come, first serve basis. Tickets are \$45.00 per person and include game ticket, motor coach transportation from Co-op's office in Glencoe, and snack on the bus.

To sign up, get more information on seating for the game, or purchase your tickets with a credit card, call the Co-op office.

McLeod Co-op Bus Trip — Twins vs. Chicago White Sox at Target Field! — 12:10 p.m., Thursday, June 22.

Bus departs from McLeod Co-op at 10:30 a.m.

Phone: _____

Name(s): _____

Address: _____

City: _____ State: ___ Zip: _____

of reservations: _____ @ \$45 = \$ _____

Make checks payable to McLeod Cooperative Power. Clip and send this form to: **McLeod Cooperative Power Association**
P O Box 70, Glencoe, MN 55336-0070
Attn: Bob Thomes before May 20

THE SYSTEM DELIVERY CHARGE — A solid investment in your electric cooperative

The system delivery charge (formerly called the fixed charge) on your monthly electric bill is designed to recover the basic cost of electric service, independent of how much energy is used.

As a member of McLeod Co-op Power you make an investment in the Co-op every time you pay your bill. This collective investment in the Co-op benefits you and the Co-op community immediately and over time. So what exactly is this monthly investment, and how do you benefit from it?

The system delivery charge is a monthly investment that helps your Cooperative cover the expenses of maintaining the overall electric system. Combating

cyber security threats and maintaining poles, wires, substations and Co-op equipment takes strategic planning and significant resources. The system delivery charge essentially ensures that all equipment operates properly and staff is trained and ready so the lights turn on when you need them. It supports fleet, facility and customer service functions, such as right-of-way clearing, member service support, and administrative responsibilities.

Regardless of how much electricity a particular family uses, the cost of delivering power to that house is the same. If you use only one kWh of electricity and your neighbor uses 1,000 kWh, McLeod Co-op Power still incurs the same cost to build the line, maintain the distribution system and

deliver electricity to both of you.

As a not-for-profit electric cooperative, we believe the operational costs should be spread fairly and equitably across all of our members. That is why every member pays a system delivery charge each month to cover basic operational costs. In essence, this gives each Co-op member an equal share in the Co-op's operation.

Your monthly investment ensures you have access to safe, reliable and affordable power when you need it. We appreciate and value the investment that you make in the Co-op each month and we strive to use that investment wisely for the benefit of our Co-op community.

Considering going solar?



5 Reasons Community Solar is a Great Option

1. **Comparative pricing to installing solar at your home**
2. **All costs included — no worry, no hassle, no maintenance**
3. **Mobile — moves with you to locations served by MCPA**
4. **Transferable — can be given or sold to any other MCPA member**
5. **Choice — purchase output from one panel or up to your annual energy use**

The Co-op's first array is full. The Co-op has the option to add 50 more panels if enough MCPA members are interested. The Co-op is currently filling up a list of members for subscribing those 50 additional panels. If interested, contact Bob Thomes at 1-800-494-6272. There is no deposit required at this time to get on the list.

MCPA office will be closed Monday, May 29 in observance of Memorial Day.



Electric outage calls are answered 24 hours a day at 1-800-927-5685.

Helpful farm safety tips that can save your life

Please share with your family and your seasonal farm workers

- To prevent electrocution, make sure farm equipment (including planter arms and sprayers) safely clear overhead power lines. This tall equipment can easily become entangled in power lines. Keep a minimum of a 15-foot distance from power lines in all directions.
- Consult with the Cooperative and your electrician about moving or burying overhead lines around buildings or busy pathways. If building a new farm structure or grain bin, consult with the Cooperative for information on minimum clearances and the location of overhead lines.
- Keep a safe distance from power poles and guy wires when working the land or planting crops. Contact 911 immediately if your equipment comes in contact with a power line. Keep others away and remain calm. DO NOT try to exit the machinery or touch someone who has had electrical contact. You NEVER want to touch the ground and energized machinery at the same time! If you must exit your equipment for life-threatening reasons, jump out and away from the machinery, making sure to land with your feet together and touching. Then shuffle at least three tractor lengths away with your feet touching. NEVER attempt to



get back into or touch machinery that is in contact with a power line.

- If you come into contact with a guy wire or power pole (even if there are no power lines that have come down), contact the Co-op right away. Don't try to fix it yourself. Leave that to the experts.
- Water, dust and farming often go hand-in-hand. Install waterproof and dustproof electrical boxes and outlets at the farm.
- Make sure your family members and seasonal workers are all educated to stay safe on the farm. Each worker should be aware of the dangers and proper safety procedures.
- If a standby generator is used on a single-phase system, it must be connected to the farm's wiring system through a double-pole, double-throw switch. The switch disconnects the farm's electrical system from the Cooperative's lines during an outage and prevents the backfeed of power — keeping linemen safe from the risk of electrocution.

Peace of mind... At the touch of a button.

With FirstCall, help is available when you need it most. The heart of our FirstCall system features the most advanced, easy-to-use, 2-way voice technology available. It's superior speaker clarity, range, and built-in battery back-up make it a secure, effective link to our 24/7 response center.

If emergency medical help is needed, we immediately contact the appropriate authorities and help is on the way. If the situation does not require a 911 emergency agency, a predetermined friend, family member, or caregiver can be called to assist.



Board of Directors

District 1 - Oria Brinkmeier

Hollywood Twp. in Carver Co., Winsted Twp. in McLeod Co., Victor, Woodland, & Franklin Twps. in Wright Co.

District 2 - Joe Griebie, Vice President

Hassan Valley, Sumter & Rich Valley Twps. in McLeod Co.

District 3 - David Resch

Bergen, Helen, & Glencoe Twps. in McLeod Co.

District 4 - Doug Kirtz, Secretary-Treasurer

Boon Lake, Brookfield, Osceola, Kingman, Preston Lake, Hector, Melville, Bird Island, Palmyra, & Norfolk Twps. in Renville Co. & East Lake Lillian Twp. in Kandiyohi Co.

District 5 - Allan Duesterhoeft

Lynn & Acoma Twps. in McLeod Co. & Ellsworth Twp. in Meeker Co.

District 6 - Gary Burdorf

Penn Twp. in McLeod Co, New Auburn, Green Isle, Dryden & Arlington Twps. in Sibley Co.

District 7 - Randy Hlavka, GRE Representative

Hutchinson & Hale Twps. in McLeod Co., Collinwood Twp. in Meeker Co.

District 8 - Keith Peterson, President

Collins & Round Grove Twps. in McLeod Co, Grafton, Martinsburg, Bandon, Wellington, Moltke, Bismarck, Transit, & Alfsborg Twps. in Sibley Co.

District 9 - Gerald Roepke,

Asst. Secretary-Treasurer

Watertown, Camden, & Young America Twps. in Carver County

McLeod Cooperative Power News

USPS 2220

Periodicals Postage Paid at Hutchinson, MN

POSTMASTER: Send address changes to

McLeod Cooperative Power News

P O Box 70, Glencoe, MN 55336-0070

The **McLeod Cooperative Power News** is published monthly for \$4.70 per year for members and \$8 per year for non-members by McLeod Cooperative Power Association 1231 Ford Ave. N., Glencoe, MN 55336-0070

Editor: Sue Pawelk

General Manager: Carrie L. Buckley

cbuckley@mcleodcoop.com

The McLeod Cooperative Power News is the official member publication of McLeod Coop Power Association and focuses on our members, programs and events.

All member story ideas and comments are welcome. Send to Sue Pawelk at the address shown.

Office Hours:

Monday - Friday

7:45 a.m. - 4:30 p.m.

Phone: 320-864-3148

1-800-494-6272

24-hour outage: 1-800-927-5685

Fax: 320-864-4850

Web site: www.mcleodcoop.com

Gopher State One Call 811 or 1-800-252-1166

McLeod Cooperative Power Association is an equal opportunity provider and employer.

Contractors working in MCPA service area

Utili-Tech Solutions, LLC of Stillwater, Minnesota began testing and treating electric poles in the Hollywood and Sherman Substation areas during the month of May. They will have crews working primarily in Hollywood, Watertown, Winsted, Hale and northern Bergen Townships in May testing poles. The technicians will be working near the base of poles and may be operating a four-wheeler. The name Utili-Tech Solutions is displayed on their truck. However, if members have any questions or ever notice anything they think to be unusual with people working around Co-op facilities, they are welcome to call McLeod Co-op Power.



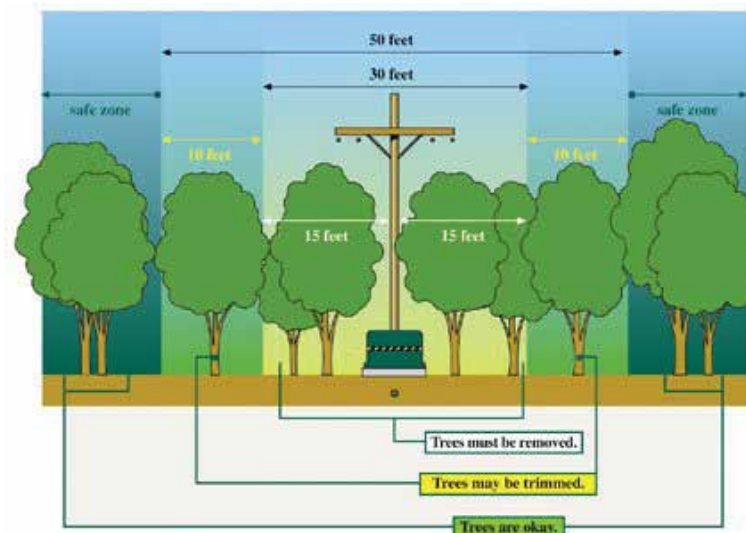
Burnham Tree Service is working in Rich Valley Township in McLeod County trimming and cutting trees during May.

Tree cutting requests

Every year McLeod Co-op Power Association (MCPA) receives a high volume of tree cutting requests. MCPA removes or trims trees for safety, system reliability, board policies, and compliance with the National Electric Safety Code (NESC). In 2016, a number of tree cutting requests were rejected because they did not meet the guidelines. Let us help you determine whether you should be contacting MCPA for a request cut or whether you need to contact an independent tree service company.



Dan Schade
Line Superintendent



MCPA will trim or remove trees if:

- Trees are in MCPA's 15-foot right-of-way on both sides of Co-op facilities
- Trees are, or will, negatively impact the power lines

MCPA will not trim or remove trees if:

- Trees are not affecting the power lines
- Trees are leaning away from the power lines
- Trees are over structures including homes, garages, outbuildings, campers, sewers, etc.
- Trees are not accessible by MCPA equipment — we do not climb trees for removal

For trees that MCPA won't trim, you should contact an independent tree trimming/removal company. MCPA crews will drop the power line so your contractor can cut the tree. When planning, we ask that you notify us two weeks ahead to schedule when you need a line dropped. Contact Dan Schade at 320-864-7338 or 1-800-494-6272.

No matter the season, heavy rain or snow and high winds can bring power lines down. When the weather turns bad, we have seen how important right-of-way clearing can be for keeping your lights on. We are here to provide you with safe and reliable power. Keeping up with right-of-way clearing is one of the most important ways to achieve this commitment.

COMPARATIVE OPERATING STATISTICS

ELECTRIC SERVICE	2014	2015	2016
Number of members	5,730	5,742	5,758
Miles of distribution line	1,891	1,890	1,892
Average number of consumers receiving service	6,593	6,617	6,714
Density of consumers per mile	3.49	3.5	3.55
Kilowatt-hours sold	185,256,195	184,679,900	179,619,374
Kilowatt-hours sold to residential consumer per month	1,554	1,434	1,433
Average bill per residential consumer per month	\$191.95	\$177.33	\$191.26
Average cost of residential kwh	\$0.12	\$0.12	\$0.13

Be prepared for summer storm season

Summer is just around the corner and so are thunderstorms. Sometimes the lights just flicker. Sometimes poles go down and electricity can be out for longer periods of time. Your Co-op works hard to ensure outages are kept to a minimum, but it does not hurt to be prepared for power outages.

Follow these tips:

1. Do your neighbors still have power? If they do, check your own fuses or breakers. Replacing a fuse or resetting a breaker may restore your power. If the problem is not in your home or you can see your neighbors are also in the dark, call the Cooperative at 1-800-927-5685. They will dispatch a crew to take care of the outage. (We recommend having the Co-op's outage number programmed into your cell phone or have a magnet with the Co-op's outage number on your refrigerator so it is always handy. Call to request a magnet if you need one).
2. While the power is out, unplug things like microwaves, TVs and computers, and turn air conditioners off. This will help eliminate damage to them from a voltage surge when power is restored. Waiting a few minutes before turning these units back on after power is restored reduces demand on the distribution system and protects your appliances. You may want to leave one light on during an outage to let you know when power is restored.
3. If you use a standby generator, make sure it is properly wired and installed with a transfer switch. If a generator is not properly installed, it could backfeed to the power lines and injure the line crew working on the outage.
4. To make power outages easier and more tolerable keep the following items on hand:
 - Flashlights
 - Battery-operated radio

- Basic first aid supplies
- Baby supplies if an infant lives in the home
- A small supply of drinking water and food
- Extra batteries for flashlights and radio
- Candles and matches

5. Check your basement periodically for flooding. A portable, gasoline-powered pump or a battery back-up sump pump can be used if a power outage renders your unit inoperable. Never wade into a flooded basement unless the electricity supplying power to basement appliances and outlets has been disconnected.
6. Never go near downed power lines. That is a job for line crews.
7. Keep freezers and refrigerators closed to keep food fresh longer. Wrap blankets around the appliances to provide extra insulation. Bottled water, canned soda and juices eliminate dependence on the refrigerator.
8. If the health of a family member is a concern, consider staying with friends, in a community center or church where electricity is available. You can also consolidate your resources with neighbors if they have electricity in their homes. Furthermore, the Co-op should be notified now, before a storm, if you use life-support equipment in your home.
9. In most rural areas electricity is required to pump water into the home. Since water cannot be pumped during a power outage, keep an adequate supply of drinking water on hand at all times.

Think ahead and follow the above tips to be prepared for a power outage. Planning ahead makes such disruptions easier. Finally, remember to stay calm. The electricity will be back on as quickly as possible. Your Cooperative is working long hours to restore your service.

Robotics teams qualify for FIRST World Robotics Competition

When you hear the word “robot,” do you immediately jump to an image of the cartoon character “Rosie” on *The Jetsons*? Or maybe C3PO or R2D2 from *Star Wars* fame.

Actually, “robotics” is a popular after-school activity that nearly every high school in our region is involved in. The Litchfield High School Dragon Robotics team just competed in the FIRST® (For Inspiration & Recognition of Science & Technology) World Championship in St. Louis, Missouri April 27-29. This is the first time that the team has competed in the World Competition, having reached qualifying status in the regional competition in Duluth last month.

The entire robotics program exists to ultimately compete, developing a remote-controlled robot that the team hopes will be able to hold its own in an arena against robots of other teams. Ken Renner, Software Engineer for STAR Energy, one of Meeker Co-op’s subsidiaries, was one of four mentors who guided a 12-student team in the creation of their robot and accompanied them to competitions. The other three mentors were Industrial Arts instructor John Spanos, Milan Godejahn, and Kip Kleinschmidt. Milan’s wife Roxanne, drove the team bus.

The year begins in January when the team receives the game manual and specifications from which the teams will brainstorm how to build their robot and what they will have their robot do in competition.

“From the time the teams receive the manual to the time their robot must be completed is six weeks,” Renner said. “The specifications include weight and size limits and how a robot can and can’t be built, but it’s up to the team to come up with a design.”

“The first week, the team and mentors get together every evening to discuss ideas of how the robot should look and what it will do,” Renner said. “Even though not everyone agrees, by the middle of the second week they have to start building to meet the deadline, so we need to come to a consensus early.”

Along with the game manual and specifications, there is a robot kit available that has minimal parts to

Team Members Attending St. Louis

Mentors:

John Spanos –
LHS Robotics Coach
Milan Godejahn
Roxanne Godejahn
Kip Kleinschmidt
Ken Renner

Students:

Vlad Preciado
Devon Nelson-West
Riley Christensen
Trevor Rieck
Seth Renner
Svea Ellingson
Nick Smith
Zach Carlson
John Kiehn
Tyler Sangren
Jake Sovacool

assist in building the robot, but not all teams use what’s available in the kit, preferring to use other parts. A number of websites are available as resources from which to purchase parts.

“A lot of times we just ran down to the local Runnings store to pick up what we needed,” Renner said.

For the next four to five weeks, the team meets after school Mondays, Wednesdays and Fridays from 3-6 p.m., Tuesdays and Thursdays, from 3-8 p.m and from 8-noon every Saturday. Because of other sports and activities, students have to balance their time.

“In the beginning, you’re thinking that six weeks won’t be enough time,” Renner said. “But by the end, you’re glad it’s not longer because of all the work everyone does to get it ready in time.”

For 2017, the teams could choose between three activities to build their robots to do:

- Throw balls into a hopper;
- Drive to a loading pit, pick up gears, drive them across the arena and place them on a peg; and/or
- The robot must climb a six-foot rope, ring a bell and hold the bell until the match ends

Each activity counts a certain number of points. For example, shooting balls into a hopper counts 1 point each; placing gears counts 40 points and climbing a rope accumulates 50 points. The more times a robot is able to



Members of the Litchfield Dragon Robotics team and mentors surround the robot they created to compete in the FIRST World Robotic Championship in St. Louis April 27-29.



During competition, teams’ robots attain points by completing defined tasks, while also trying to prevent their competitors from achieving points. The most points accumulated during play wins the match.

achieve these feats, the more points are given.

The Dragon Robotics team decided to focus only on building a robot that could place gears on a peg and climb a rope, which would score them the most points.

“Throwing balls into a hopper only counts one point, so we chose not to focus on that,” Renner said. “However, one of our matches we lost by only one point, so being able to do all three activities gives you a better chance of winning.”

The Competition

All robotics teams in the World Competition are required to ship their robots to St. Louis for inspection in late March or early April, prior to the team arriving. This is to prevent any team from further modifying their robot prior to competition, as well as to check the robots’s specifications to make sure they conform to the rules.

The Dragon Robotics team arrived in St. Louis Wednesday, April 26 in time to be able to practice in the arena in preparation for Thursday’s beginning matches.

Of the more than 400 American and international teams who attended the competition, six subdivisions were created. The subdivision Litchfield was placed in had 68 teams. The teams were further divided into “alliances” consisting of three teams from other cities, states or even countries.

“These are teams you’ve never met before and you only have an hour or so before competition to get the team members together and decide on a strategy,” Renner said. “That can be tough, but it teaches you how to work with people you don’t know.”

Renner said that the teams first experience at the World Competition was eye-opening.

“We did well at the regional competition in Duluth, but now we were competing against the best of the best from all the other regions in our country and internationally.”

One thing the team wishes they did differently was to create a heavier robot.

“The year before we had trouble keeping our robot under the 120-pound limit,” Renner said. “So this year we intentionally built a smaller robot, about 70 pounds. That meant that heavier robots were able to really bull-doze us down the court.”

The two days of competition began about 7 a.m. and continued until 6 p.m., which Renner said were pretty long days for everyone.

During the competition, a minimum of 10 judges watched the teams carefully, scoring points and watching out for fouls.

“They didn’t miss a thing,” Renner said.

How did the Litchfield Dragons do?

“The team did as well as we did in Duluth,” Renner said. “But the competition was tougher [at the World Competition] so we ultimately placed 53rd out of the 68 teams in their division.”

Those teams that did the best were able to do all the activities consistently.

“Even one mistake at that level can cost you,” Renner said.

Sponsors that made monetary contributions for the Litchfield Robotics Team trip to St. Louis

BusinessWare Solutions
Litchfield High School
Custom Products
Towmaster
Spectralytics
Litchfield Eagles Club
Sons of the American Legion
Insurance Solutions
Meeker Cooperative
HTI
Prairie Drifters Farms
Jim Ellingson Prudential
Venus Salon & Spa
Airhart & Company
Christianson & Associates PLLP
Buzz Tees



The Hutchinson Tigerbots with their robot showing the balls that could be thrown in the hopper to gain points. Students participating are: Erik Olson, Jason Hasse, Alex Sperl and Noah Nadeau. Staff photo by Jeremy Jones of the Hutchinson Leader.

While the team picked up a lot of ideas and strategies for the next year, robotics isn’t all about the competition. There are a lot of lessons taught during the preparation and competition, like collaboration, fair play, and “coopetition,” a made-up word that combines both cooperation and competition.

“Even though teams are in competition with each other, they still cooperate, share robot parts with one another if needed and help if they can,” Renner said.

“And one team is never allowed to deliberately destroy another team’s robot during competition.”

One might expect that robotics would appeal to those people most interested in engineering and technology, but not so, said Renner. “There are many different skill levels needed on a team, to coordinate things such as the website, safety practices, mechanical components, electrical, and computer software.”

Now that the team has attended a World Competition, they are better prepared for what is required for that level of competitiveness and will be aiming even higher next year.

“I’ve heard next year’s competition is in Detroit,” Renner said. “Now we’ve seen what the end goal is, we will be prepared. If we make it through Duluth again next year, we will go to Detroit!”

The Dragon Robotics Team is very thankful for their many

sponsors who make it possible for the robotics program to exist. Businessware Solutions in Hutchinson has a particular interest in robotics.

“I think it’s just awesome that these programs exist,” said President Don Hoverstein. “They didn’t exist when I was a child and I wish they had.”

Don is very tech-oriented, having begun programming Apple II computers when he was just 8 years old. Besides enjoying the activity itself, he also sees the value in promoting this type of learning.

“These programs teach kids technology and working together. It’s so impressive the things they are able to do.”

Hutchinson High School also attended the FIRST World competition. The Hutchinson club, the Tigerbots, won the Northern Lights Regional FIRST Robotics Competition in mid-April and earned a place at the national FIRST Championship in St. Louis.

Although the Tigerbots didn’t place during the competition, they came away with plenty. Some of the skills they learned include professionalism, diplomacy and strategy, skills that will undoubtedly serve them all very well in their future endeavors and during the 2018 robotics competitions.

Industry News

Cooperatives to add nearly 500 MW of Solar this year

According to the NRECA, electric cooperatives are on pace to install 480 MW of solar energy in 2017, raising total solar photovoltaic capacity from the cooperative sector to 873 MW. In comparison, cooperatives had 180 MW of solar capacity in 2015 and just 37 MW in 2010.

~CFC Solutions Newsletter

PJM: Too much Solar will hamper reliability

According to a recent study, PJM Interconnection—the Valley Forge, Pennsylvania-headquartered regional transmission organization that coordinates roughly 177,000 MW, or nearly 20 percent, of the nation’s generating capacity, in all or parts of 13 Mid-Atlantic, Midwest, and southern states and the District of Columbia—can maintain adequate reliability with a generation fleet almost entirely composed of natural gas units. However, a capacity mix of more than 20 percent solar would increase the risk of loss-of-load events.

PJM commissioned the report in response to stakeholder concerns that the system is losing too many traditional baseload resources as coal plants retire and nuclear assets struggle to remain profitable. In 2016, PJM’s installed capacity mix was 33 percent coal, 33 percent natural gas, 18 percent nuclear and 6 percent renewables, including hydro. By comparison, coal and nuclear resources accounted for 91 percent of the PJM generation fleet in 2005.

~CFC Solutions Newsletter

California utility launches first hybrid power system

California utility has launched unique systems combining a hybrid battery and gas turbine to produce and store electricity for use during hot summer months and other times when power demand soars. The new Hybrid Electric Gas Turbines are the first of their kind in the world, officials with Southern California Edison and manufacturer General Electric said during an event Monday near Los Angeles.

Edison President Ron Nichols said the twin systems that went online March 30 operate somewhat like a hybrid car - drawing first on the battery, then switching over to the gas turbine if power demands spike.

~Associated Press



AC tune-ups eligible for credit once every two years

Schedule an air conditioning tune-up with your contractor today.

Just schedule a tune-up of your central air conditioner or air source heat pump (unit must be at least 5 years old and in working condition to qualify) and when your licensed professional HVAC contractor performs the service work, have them complete the rebate coupon. Send the completed rebate form to the Cooperative with a copy of the contractor's invoice. His tune up must include the items on the coupon. After the Co-op receives your documentation, we will credit your electric bill \$25 within 4-6 weeks.

Air Conditioner/Heat Pump Check List

Eligible for credit a maximum of once every 24 months

Owner _____
 Acct. # _____
 Address _____
 Location # _____
 Phone # _____
 Company doing Tune-Up _____
 Technician's Name _____
 Company Phone # _____

CHECK LIST

Brand Name _____
 Model # _____
 Serial # _____
 Tons/BTU Rating _____ SEER Rating _____

- Clean Outdoor Unit
- Clean and Inspect "A" Coil
- Check Blower Belt
- Compressor Motor Amp Reading Check
- Compressor Amp Reading Check
- Blower & Oil
- Blower Motor Amp Reading Check
- Check Filter
- Check Refrigerant Level & Pressure
- Blow Out Drain Line
- Visual Inspection of Cooling System

Recommendations _____

Technician Signature _____

Date _____

Ridgewater College scholarships awarded

The Ridgewater College Foundation awarded spring semester scholarships recently. Four \$400 scholarships were made possible by a \$1,000 donation last year from the Co-op's Operation Round Up Trust and a donation to the Foundation from McLeod Co-op Power's unclaimed capital credit fund. After seven years of holding unclaimed capital credits and trying unsuccessfully to get the funds to former Co-op members, the state allows the funds to be donated to educational scholarships.

Recipients of awards this spring were:

- Aleisha Ahlbrecht — Early Childhood Education
- Kaitlyn Bohning — Liberal Arts & Science
- Alexis Eggers — Pre-nursing for MANE
- Sawyer Fratzke — Liberal Arts & Science

Power line worker scholarship awarded



Matthew Johnson has been selected to receive a \$500 powerline worker educational scholarship. Matthew plans to attend Dakota Technical College in Farmington, MN in the power line worker program. He will be a graduate of Central High School in Norwood Young America this spring. He is the son of Scott and Tracy Johnson of Plato. Congratulations Matthew.

March Outage Summary

There were 46 outages in March. All outages were single outages affecting only one account, except for one affecting two accounts. This is quite unusual. Out of the 46 outages, 33 were planned by the Co-op for transformer or pole changeouts or service upgrades.

Most outages affect only one or two members. They are frequently caused by small animals, trees in the line, equipment failure, or motor vehicle/machinery accidents. Larger outages affecting hundreds of members at a time are usually caused by transmission outages, storms, equipment failure to substation equipment, or accidents. Restoration time on weekend and evening outages, when line crews are called out from home, usually take a little longer to get back on than outages when crews are already out working on the project.

MCPA News Ads — Free want ad service for members

Please limit your ad to nine words. Use the coupon printed here or available at McLeod Cooperative's front desk to submit your ad. Ads will be printed for one month only. Please submit a new ad if you want it published more than one month. Include your name and address, which will be used for identification purposes only. Ads must be received by May 30 to be included in the June issue. Thank you!

Please run this ad in the next MCPA News

Name: _____

Address: _____

Telephone number: _____

Please check ad category

- Giveaway
- For Rent
- For Sale
- Wanted

Remember to limit your ad to nine words!

1 _____ 2 _____ 3 _____

4 _____ 5 _____ 6 _____

7 _____ 8 _____ 9 _____

Clip and Send to: McLeod Cooperative Power, ATTN: Classified Ads
 P.O. Box 70, Glencoe, MN 55336

For Sale

- Steel fence posts. 320-864-4496
- 2 steel barrels. \$10/each. 320-327-2472
- 2009 Crown Victoria police interceptor, 103,000 miles. 952-353-2351
- 55 gallon steel drums w/removable lids. \$15/each. 952-353-2351
- 353 Detroit diesel motor. 320-485-3726
- Schwartz snow bucket. 320-582-1534
- 2 old Dynamark lawn mowers. 320-582-1534

For Sale Farm

- 40ft Snowco bale elevator. 320-864-4496
- WD-45-S Allis Chalmers with loader. 320-328-5710

- WD-45-S Allis Chalmers with snowblower. 320-328-5710
- 1st & 2nd cutting alfalfa bales stored inside. \$4/each. 320-249-8259
- 3 bale throw racks 8 X 14, 2 w/John Deere running gears. 320-587-6863
- 8430 CaselH round baler. Good condition. \$4,700. 320-510-3616
- 3 sickle mowers. 320-522-2167
- MN250 gravity box. 320-522-2167
- New Idea hay rake. 320-522-2167
- Round bales of meadow hay. 320-485-3726
- New Holland whirl-a-feed blower model-28. Shedded, excellent condition. 507-327-1869
- 2 gravity boxes. 250 bushels each. 320-582-1534
- 1958 Ford tandem truck. No box. 320-582-1534

- 500 gallon spray tank bracket. For field cultivator (no tank). 320-582-1534

Wanted

- Farmall tractors F-12, F-14, F-20, F-30, 15-20, 15-30, 22-36. 507-964-5731
- Unwanted riding lawn mowers. Free pickup. 320-587-9207
- Pasture land to rent for ten cows. 952-649-7661

Giveaway

- Playful farm kittens and young cats. Use litter box. 612-242-4177
- Plastic barrels & old storm windows & screens. 320-587-4681

Disclaimer – McLeod Cooperative Power Association (MCPA) assumes no liability for the content of, or reply to, any item posted. The party posting any advertisement assumes complete liability for the content of, and all replies to, any advertisement and for any claims against MCPA as a result thereof, and agrees to indemnify and hold MCPA harmless from all costs, expenses, liabilities and damages resulting from, or caused by, any advertisement or reply thereto.

Never buy a central air conditioner again; Go with an air source heat pump for savings

When your old central air conditioner conks out, upgrade to an energy-efficient air source heat pump. Air source heat pumps provide the same cooling as high-efficiency air conditioners in the summer, however, they also provide heating on the mild winter days and during the fall and spring months. Air source heat pumps, when installed by a “quality installation” approved contractor, are eligible for rebates of \$480 to \$630 depending upon the unit’s seasonal energy efficiency rating.



The energy savings from a unit that heats and cools will provide a shorter payback even with the slightly higher upfront purchase price. Ask your heating and cooling contractor for a quote for an air source heat pump instead of a central air conditioner. The rebate from the Co-op will help offset the larger price of a heat pump. Central air runs for just a few months, while air source heat pumps work for you year-round, which is a better return on your investment.

Air source heat pumps provide heating efficiencies around 200%. A heat pump can be

more than 100% efficient because it just pumps or moves heat from one place to another, rather than creating heat. Keep in mind that fossil fuel furnaces can be from 65% to 94% efficient.

When a member enrolls in the Co-op’s load management program for cycled cooling and dual fuel, they now purchase the kWh for that unit at less than half of the regular rate, making it an incredible money-saving investment. A high efficiency unit operated on an electric rate that is under six cents per kWh equals a quick payback for the member.

Call the Co-op office at 1-800-494-6272 and ask to speak to one of the energy experts. They would be happy to visit with you about rebates for an air source heat pump and the load management programs. The Co-op does not sell air source heat pumps. They would be purchased from and installed by your HVAC contractor. Ask your contractor if they are a “quality installer” certified on the www.hvacreduction.net site to guarantee your installed air source heat pump qualifies for the rebate.

Call the Co-op for free net-metering info packet BEFORE you shop for solar or wind system



It is very important that you contact the Co-op for your free net-metering info packet before you start shopping for a solar or wind system. Educational materials on the interconnection of renewable energy systems can be mailed or e-mailed to you at no charge upon request. Many renewable resource documents are available on the Co-ops website.

The State of Minnesota has standardized rules for all consumers who plan to own or operate any distributed generation facilities (like solar or wind). Whether you are doing one solar panel on the side of your barn or a big wind turbine, the rules and requirements by the state to ensure safe interconnection and operation are very similar. The Cooperative can provide you with the most up-to-date policies and requirements for installing renewable energy.

There are some revisions to Minnesota law coming out of the recent legislative session that affect renewable energy systems. It is important that you have the most current information so that you can ask all the necessary questions when researching a renewable product or installer and understand the requirements for interconnection.

2017 RESIDENTIAL REBATES

A summary of rebates available from your co-op this year*

ENERGY STAR APPLIANCES

Dehumidifier	\$25
Electric Clothes Dryer.....	\$75

RECYCLING

Old Freezer or Refrigerator.....	\$75
(proof of recycling required)	

CONSERVATION

Electric Vehicle Charging Station	Up to \$500
towards installation & equipment	

ENERGY STAR SWIMMING POOL

Air Source Heat Pump Pool Heater.....	\$400
Variable Speed Pump	\$200

ENERGY STAR LIGHTING

LED Yard Light.....	\$60
LED Holiday Light Strings, (limit 10)	\$2
LED Light Bulbs, (limit 10)	\$3

HVAC

Electric Thermal Storage (ETS) Space Heating.....	\$50/kWh
14.5 SEER Air Source Heat Pump.....	\$480
15 SEER Air Source Heat Pump.....	\$580
16 SEER or higher Air Source Heat Pump	\$630
Ductless Air Source Heat Pump (delivered fuels)	\$300
Ductless Air Source Heat Pump (primary electric heat).....	\$500
Ground Source Heat Pump.....	\$400/ton
ECM (fan motor)	\$100

WATER HEATERS

Electric Storage Water Heating Program.....	\$400
---	-------

*This is a residential summary only. The Co-op also offers agricultural, commercial and industrial custom rebates. There is a \$2,000 maximum rebate per member per year. Only ETS space heating does not have a \$2,000 maximum cap. All rebates are on a first come, first serve basis, so please turn in your paperwork promptly.

Most downloadable rebate forms are available on the Co-op website at www.mcleodcoop.com (click on Customer Service tab). Please read the details on specific rebate forms, as some products have limits, require ENERGY STAR certification, or other requirements.

Air Source Heat Pump rebate forms must be completed by the installing contractor. Rebates for high efficiency air source heat pumps require installation by a “registered contractor” which has been designated as a quality installer and is listed on the hvacreduction.net web site. A list of all “registered contractors” in Minnesota is on our cooperative website at www.mcleodcoop.com (click on Partners tab). There are no rebates on central air conditioners. The Cooperative encourages any member replacing their central air conditioner to upgrade to an ENERGY STAR rated air source heat pump. LED yard lights must be installed on consumer-owned building or facilities. Lights cannot be installed on Co-op power poles.



Get up to \$30 rebate on LED bulbs

Any MCPA electric member who purchases ENERGY STAR® or DLC-rated LED bulbs or fixtures may apply for a \$3 per bulb rebate. Limit of ten bulbs, for a total rebate of \$30. Purchase your high efficiency LED bulbs or fixtures at any retailer of your choice.

The rebate form is available on the Co-op's website at www.mcleodcoop.com (click on Customer Service tab and then click on Rebates or Cash Back). Rebate forms are also available by calling the Co-op at 1-800-494-6272 or stopping in the office at 1231 Ford Ave. in Glencoe. Complete and return

the rebate form and attach a copy of the original dated sales receipt and the package UPC symbol within 90 days of purchase or before Dec. 21, 2017, whichever comes first. Bulbs must be installed within the Co-op's service territory. The rebate amount will be applied as a credit to your electric bill. All rebates are processed on a first come, first serve basis. If rebate funds are depleted, rebates will cease for 2017.

This is a great time to replace any inefficient incandescent bulbs with energy-saving LED bulbs. Call the Co-op if you have any questions.

2017 Fluorescent Bulb Recycling Program



McLeod Cooperative Power makes bulb recycling easy and we'll even help pay the fee.

Here's how it works:

- Free recycling of compact fluorescent lamps (CFLs) with coupon. Simply bring your used CFL and FREE recycling coupon to a participating retailer.

Free CFL Recycling ONLY:

- Home Solutions (Norwood Young America)
- Corner Stone Hardware & Mercantile (Lester Prairie)
- Gibbon Lumber & Hardware (Gibbon)

Accept CFLs and fluorescent tubes for recycling:

- Beckler's Hardware Hank (Bird Island)
- Fleet Farm/True Value (Glencoe)
- The Hardware Center (Gaylord)
- Thomes Bros. (Arlington)

- You must be a MCPA residential or small business member to participate.

- Each coupon may be redeemed for up to 10 bulbs.

While fluorescent lamps are environmentally preferred over incandescents, they do contain a small amount of mercury and if improperly disposed of can be harmful to the environment. It is illegal to place them in the trash.

Free CFL Recycling



Name: _____
 Address: _____
 City: _____
 State: _____ Zip: _____
 # of bulbs redeemed: _____ (up to a maximum of 10 bulbs)

Coupon expires 12/15/2017. Limit of 10 bulbs per coupon. Coupon valid only when completed. Must be MCPA residential or small business member to qualify. Must be redeemed at participating hardware store: Home Solutions in Norwood Young America, Corner Stone Hardware & Mercantile in Lester Prairie, Gibbon Lumber & Hardware in Gibbon, Beckler's Hardware Hank in Bird Island, Fleet Farm/True Value in Glencoe, The Hardware Center in Gaylord, or Thomes Bros. in Arlington.

50¢ off Fluorescent Bulb Recycling



Name: _____
 Address: _____
 City: _____
 State: _____ Zip: _____
 # of bulbs redeemed: _____ (up to a maximum of 10 bulbs)

Coupon expires 12/15/2017. Limit of 10 bulbs per coupon. Coupon valid only when completed. Must be MCPA residential or small business member to qualify. Must be redeemed at participating hardware store: Beckler's Hardware Hank in Bird Island, Fleet Farm/True Value in Glencoe, The Hardware Center in Gaylord, or Thomes Bros. in Arlington.

50¢ off Fluorescent Bulb Recycling



Name: _____
 Address: _____
 City: _____
 State: _____ Zip: _____
 # of bulbs redeemed: _____ (up to a maximum of 10 bulbs)

Coupon expires 12/15/2017. Limit of 10 bulbs per coupon. Coupon valid only when completed. Must be MCPA residential or small business member to qualify. Must be redeemed at participating hardware store: Beckler's Hardware Hank in Bird Island, Fleet Farm/True Value in Glencoe, The Hardware Center in Gaylord, or Thomes Bros. in Arlington.