

McLeod Cooperative Power NEWS

May 2016

In this issue...



Excitement is growing for electric cars..... 4



LED Bulb Rebate..... 8

Official publication of



Have something to sell?

Consider placing a classified ad in the MCPA newsletter. Ads are free to members. This is a benefit of membership.

You can sell a car, camper, farm machinery or stuff you are cleaning out of your attic. Check out the details inside this newsletter. Look for the ad coupon. Certain restrictions apply so please read the details.

Play Ball! Minnesota Youth Clinic to take place in Arlington on June 4



Play Ball! Minnesota will offer a free baseball clinic to youth from Arlington and the surrounding area on Saturday, June 4. Members of McLeod Co-op Power and their children are welcome to attend. The clinic will begin at 10:00 a.m. at the Arlington Baseball

Park. In the event of rain, the clinic will be relocated to Sibley East High School.

Sponsored by the Twins Community Fund and Great River Energy, the Play Ball! Minnesota Youth Clinics program provides boys and girls from throughout the Upper Midwest with the opportunity to enhance their skills and have fun, while also hearing positive messages. The event will be hosted by McLeod Co-op Power and the Arlington Baseball Association.

The event is free to participants. The clinic is divided into two 90-minute sessions, and provides quality and fun instruction

for boys and girls age 6-13. There will be a 10 a.m. session for 6-9 year olds and an 11:30 a.m. session for 10-13 year olds. The clinic will focus on hitting, fielding, and throwing, and parents are encouraged to participate with their children. The Twins provide all the equipment, however, youth participants are asked to bring their own baseball glove.

Pre-registration is not required, however, a parent or guardian will need to sign a waiver for their youth participant the morning of the June 4 event.

The Play Ball! Minnesota Youth Clinics program was created in 1961 by longtime Twins scout Angelo Guiliani as a way to promote the game to all youth. Since then, more than one million Upper Midwest and Southwest Florida youth have participated in a Play Ball! Minnesota Youth Clinic.

For more information on the June 4 event contact Bob Thomes at McLeod Cooperative Power 1-800-494-6272. For a complete 2016 Twins Youth Clinics schedule, please visit www.playballmn.com

New meter installation project completed



In April, the Co-op completed installation of a new meter reading system, bringing to an end the year-long process of exchanging approximately 8,800 meters. The combination of good weather and hard work has allowed us to complete this phase of the project right

on schedule. We would like to thank all of our MCPA members for your cooperation when your meter was exchanged.

We have installed and begun training on our new Meter Data Management System (MDMS). Our goal is to utilize this new tool to better answer member's energy use questions, to evaluate and monitor our current load management system, possibly create new load management offerings, and to continue to improve our system reliability. It has the potential to help the Co-op increase efficiency and cut costs as we get more experienced at using MDMS to analyze performance of our distribution equipment.

One more benefit of my new meter

On an evening or weekend, the power goes out. You are the first one to call in to report an outage in your area. Until the after-hours dispatch service has received additional calls that the power is out in your area, they must address the possibility that you are the lone outage and that the problem may be on your side of the service. They would ask you to check your breakers and fuses, warning that there could be a charge if crews are sent out and the problem is found on your side of the meter. It can be quite confusing and difficult for members to determine if they have power at their main breaker at the pole or disconnect outside.

The Co-op's new meters have put an end to this confusion. Members can now look at the display on their main electric meter to determine if their power outage is on the member's side of the meter or on the Co-op's side. A blank display means that power is out on the Co-op side, before power reaches your service. The normal scrolling information on the meter's display means that power up to your meter is still on and there is likely a breaker, fuse or other problem on your own secondary service. This is just one diagnostic tool to make life easier for all of us.

McLeod Co-op Power encourages all members to call in to the 24-hour outage line 1-800-927-5685 to report when power goes out. But now, if a question arises on whether the problem could possibly be on your side of the meter, there is an easier way to find out. Also, reporting capability of the new meters does help the Co-op know much sooner if an outage involves many members, just a few, or one single location. New technology is helping our crews respond to outages more quickly.

COMPARATIVE OPERATING STATISTICS				
	2013	2014	2015	
ELECTRIC SERVICE				
Number of members	5,719	5,730	5,742	
Miles of distribution line	1,891	1,891	1,890	
Average number of consumers receiving service	6,597	6,593	6,617	
Density of consumers per mile	3.49	3.49	3.50	
Kilowatt-hours sold	183,710,093	185,256,195	184,679,900	
Average KWH sold to residential consumer per month	1,538	1,554	1,434	
Average bill per residential consumer per month	\$185.13	\$191.95	\$177.33	
Average cost of residential kwh	\$0.1204	\$0.1235	\$0.1237	
HOW YOUR DOLLAR WAS SPENT				
Purchased Power	65 cents	Customer Info	2 cents	
Operations	5 cents	Admin/General	6 cents	
Maintenance	4 cents	Depreciation	9 cents	
Customer Accounts & Collections	2 cents	Interest	6 cents	
		Electric Margins	1 cents	

Manager's Message — by Carrie L. Buckley, General Manager



What's in it for "we?"

One of the most attractive features of cooperatives is that we answer the popular question, "What's in it for me?" with "What's in it for we!" Cooperatives are formed when the market fails to offer a good or service, with decent quality, at an affordable price. McLeod Cooperative Power was formed in 1935 because, when investor-owned utilities realized there was not enough profit to be made in our community, they refused to offer electricity.

The founding members of McLeod Cooperative Power went door to door to collect \$2 in order to raise a portion of the original investment the Co-op needed. Those "go-getters" realized the only way to get electricity for me was to get it for we, the whole community.

Cooperative ownership is in the hands of the people who use the Co-op's goods and the services (not investors), so not only do co-ops start out answering the question of "What's in it for we?" – they continue to answer that question for as long as they exist.

These days, we often hear about companies that abandon their local communities and move overseas in search of cheaper labor. This negatively impacts the community through job loss, decline in housing values and school closures. Because local residents own a majority of cooperatives, they are less likely to leave their community. In fact, it would be impossible for McLeod Cooperative Power to leave our central Minnesota service territory. The Co-op is a critical part of what makes the community a community.

The way co-ops continue to answer the question, "What's in it for we?" is critical to their survival. It is imperative that we keep you — our members — as the primary focus. Keeping rates as low as possible is one major part of that focus, but ensuring that we provide real value as your trusted energy advisor is also extremely important.

By maintaining that focus with your help and support, we will continue to be able to serve the "me" and the "we" in our community long into the future.

Sincerely, Carrie



MCPA office will be closed
Monday, May 30
in observance of
Memorial Day.

Electric outage calls are answered 24 hours a day at 1-800-927-5685.

The Perfect Mother's or Father's Day Gift

Do you worry about your parents getting older?
Do you worry about mom or dad living alone?

The First Alert emergency pendant from McLeod Co-op Power may be just the thing they need to help you worry less while they live on their own. One press of the button will call the 24-hour medical dispatch center, which will send a family member, neighbor or police over to help.

The pendant allows them to work outside in the garden or go to the mailbox, and still summon help if they need it. Emergency pendants are reasonably priced and make a perfect Mother's Day or Father's Day gift.

Call McLeod Co-op Power at
1-800-494-MCPA for more information.



Hwy. 22 & Ford Ave
Glencoe, MN
1-800-494-6272



Board of Directors

District 1
Oria Brinkmeier, **Lester Prairie**

District 2
Joe Griebie, **Brownton**

District 3
Roger Karstens, Vice President
Hutchinson

District 4
Doug Kirtz, Secretary-Treasurer
Hector

District 5
Allan Duesterhoef, **Hutchinson**

District 6
Gary Burdorf, **Arlington**

District 7
Randy Hlavka, GRE Representative
Silver Lake

District 8
Keith Peterson, President
Hector

District 9
Gerald Roepke, Asst. Secretary-Treasurer
New Germany

McLeod Cooperative Power News

USPS 2220
Periodicals Postage Paid at Hutchinson, MN
POSTMASTER: Send address changes to
McLeod Cooperative Power News
P O Box 70, Glencoe, MN 55336-0070

The **McLeod Cooperative Power News** is published monthly for \$4.84 per year for members and \$8 per year for non-members by McLeod Cooperative Power Association
1231 Ford Ave. North, Glencoe, MN 55336-0070

Editor: Sue Pawelk
General Manager: Carrie L. Buckley

The McLeod Cooperative Power News is the official member publication of McLeod Coop Power Association and focuses on our members, programs and events.

All member story ideas and comments are welcome.
Send to Sue Pawelk at the address shown.

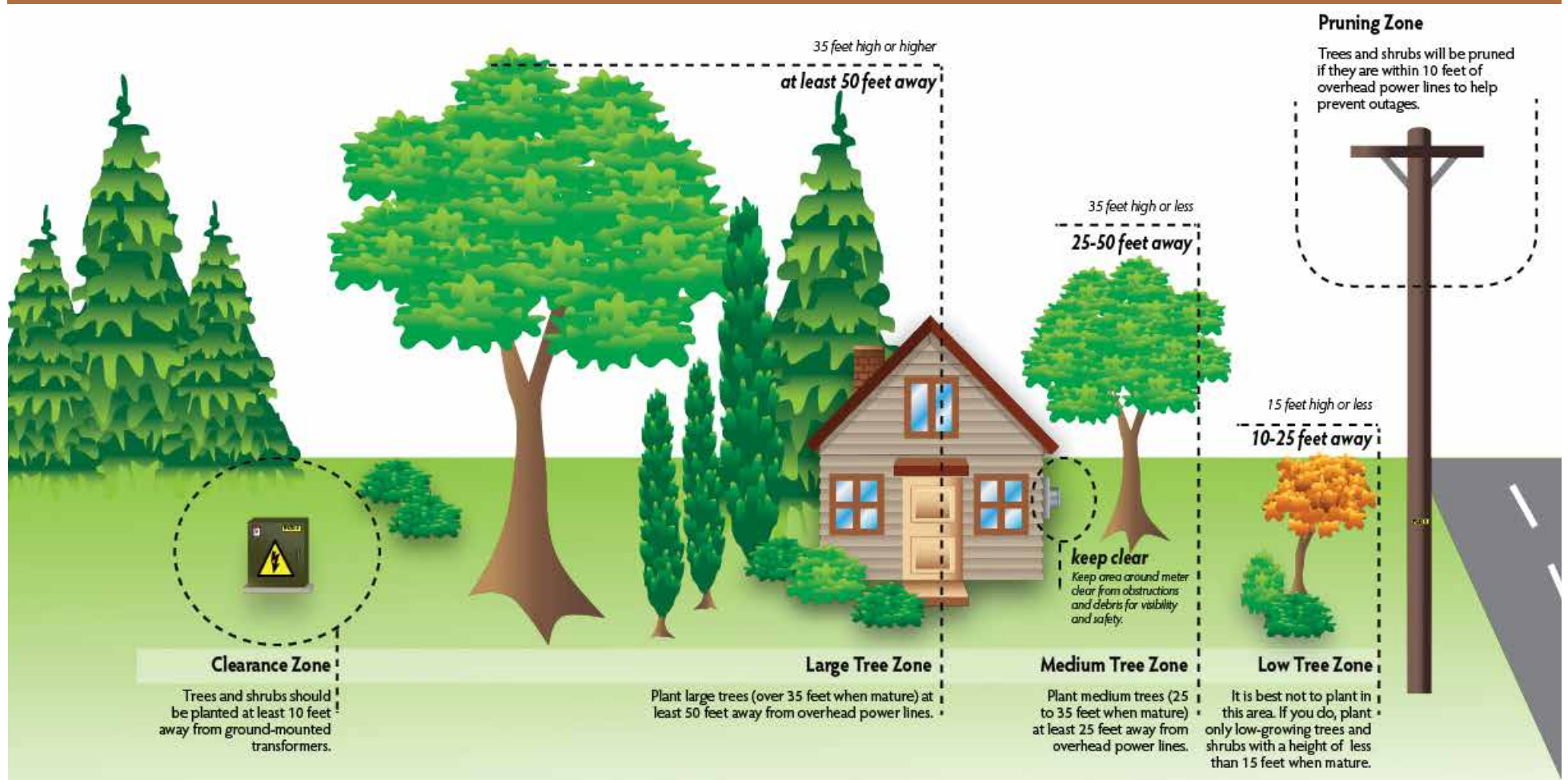
Office Hours:
Monday - Friday
7:45 a.m. - 4:30 p.m.

Phone: 320-864-3148
1-800-494-6272
24-hour outage: 1-800-927-5685
Fax: 320-864-4850
Web site: www.mcleodcoop.com

Gopher State One Call 811 or 1-800-252-1166

McLeod Cooperative Power Association is an equal opportunity provider and employer.

If you plant trees under or near a power line, it increases the Co-op's tree trimming costs for decades into the future



The Cooperative is continually looking for ways it can reduce costs. Tree trimming is one expense that has a potential for savings if members will work with us to minimize the number of places we need to trim trees and how often they need to be trimmed.

Trimming trees to keep them out of power lines costs the Co-op and its members about \$300,000 a year. Tree trimming is one of the Co-op's largest maintenance items. This is money spent on trees that the Cooperative does not own or benefit from. This money is used for trimming or cutting members' trees under or near existing power lines. If we did not cut and trim the trees, members would experience significantly more outages, longer outages, and greater expense. We ask you to please LOOK UP before planting any trees. Make sure they are not planted under a power line and that they are far enough away so the outermost branches of the tree at maturity will not be within 15 feet of the power line. This will help keep our costs and your electric bills lower.

Why do we trim trees?

1 Trimming trees is something that the Co-op must do when trees are a potential hazard to our lines. When trees get into lines they interrupt power when they make contact with a line, making your lights blink. Or they take the power out completely if they fall on the lines.

2 Trees that grow into our lines can conduct energy into the ground. This is called "line loss". The Co-op and its members pay for this lost power even though it never gets to your meter and we get no usable work from the energy. It is energy that we have purchased from Great River Energy but do not get any benefit from.

3 We also trim trees to protect the safety of the general public, our members, and our employees.

McLeod Cooperative Power hires a tree trimming contractor to do the majority of tree cutting and trimming. We are able to send contract tree crews to work in one township at a time, staying at the job until that area's wires are clear. Our tree contractor will chip the brush and leave the wood.

When MCPA crews have time, they can respond to specific member requests for trimming in other parts of our service area.

How can members help reduce the Co-op's tree trimming expense?

- 1 Don't plant new trees under or near power lines. Always look up before you plant a tree and stay far away from any overhead lines. (See chart above for distance guidelines.)
- 2 When we come to trim your trees please allow us to either cut them down or take a minimum of 15 feet clearance on either side of the power line. This would allow us several years before we would have to trim them again.
- 3 Volunteer to clean up brush on your property if you can.
- 4 If you do not want your trees cut or trimmed, members can opt to have their overhead line converted to underground. This conversion would be at the expense of the member.

Members with questions on tree trimming should contact the Cooperative office. Trees are cut and trimmed and vegetation sprayed to keep growth from endangering power lines according to the MCPA board-approved Tree Trimming & Clearing Policy.

Fixed charge gets a new name

Earlier in the year, the line item on electric bills with the name "Fixed Charge" was changed to "System Delivery Charge." It still covers the same cost of providing service to a member account, however the board and management recommended the new name to better clarify what is included in the charge.

Basically, the System Delivery Charge covers the majority of the cost to deliver electricity to each residential, farm, or small commercial account on MCPA's distribution system. These local delivery costs include investment in substations, taxes, poles, wires, transformers, meters, etc. They also include, in part, our customer service functions, billing expenses, newsletters, and the cost of restoring power outages. This is the cost MCPA incurs to build, maintain, and deliver electricity to a member, whether they use 1 kilowatt hour or 2,000 kilowatt hours per month. It does not include the cost of purchasing kilowatts (energy) or kW demand. It does not include generation or transmission costs.

Let's compare the System Delivery Cost for your family's electric bill to a similar cost on your cell phone bill. An average family (2-4 persons) will pay \$80 or more a month to get cellular phone service. That flat monthly cost includes the infrastructure, billing, and associated costs of providing you with service, similar to the Co-op's system delivery charge. You pay that expense to have access to use that carrier's system, whether you make one call or dozens of calls. If you want Smartphone or internet access that requires data, you will pay a separate additional fee, which is determined by each individual's data requirements, just like purchasing kWh or energy each month on your electric account. It is based on how much your family uses.

Visualize yourself behind the wheel of an electric vehicle



Compare Cost of Driving an EV vs. Standard Car 100 Miles

Electric Vehicle

Miles driven	100
kWh per mile	3
kWhs consumed	33.33
Estimated cost per kWh	\$0.052
Energy/fuel cost to drive.....	\$1.73

Standard Vehicle

Miles driven	100
Miles per gallon.....	20
Gallons consumed	5.00
Estimated cost per gallon.....	\$1.99
Energy/fuel cost to drive.....	\$9.95

Savings you can achieve driving an EV 100 miles — \$8.22

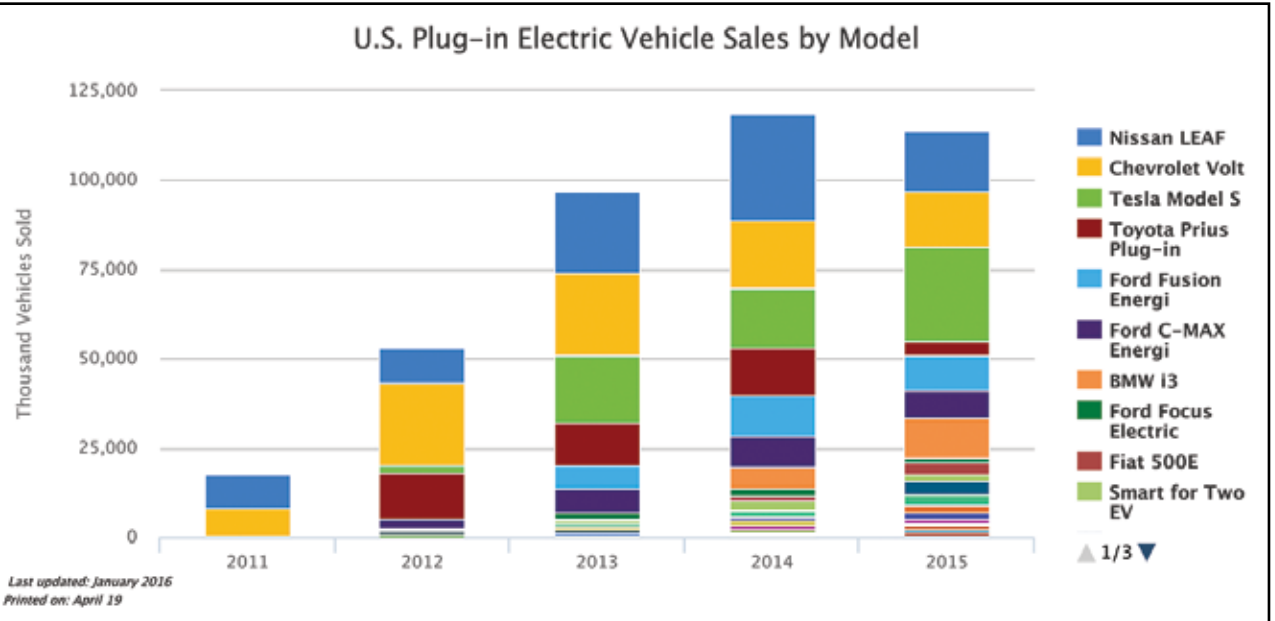
With the growing interest in electric vehicles, we are taking a more in-depth look at the variety of electric vehicle models and charging options. Electric vehicles are being forecast as the next era in transportation. We want our members to have the most up-to-date information on what is coming down the road with plug-in vehicles.

There are now over 350,000 plug-in electric vehicles (PEVs) on U.S. roads and over 3,500 PEVs in Minnesota, and that number is continually increasing. Minnesota PEV owners drove over 20 million gas-free miles in 2015. Is the recent sign-up of over 325,000 Americans in one week to reserve a Tesla 3 electric vehicle any indication of the future of cars? These consumers each had to put down \$1,000 to reserve the chance to order a Tesla 3 electric plug-in vehicle, with an estimated price of \$35,000. These vehicles are not scheduled to begin delivery until 2018. Many consumers stood in line for hours waiting for their turn to put down their deposit on the AWD vehicle that is touted to have over a 200-mile driving range per charge and be about half the price of today's Tesla models. Customer satisfaction seems to have a lot to do with the increased interest in PEV ownership. Current PEV owners give their electric cars a very high satisfaction rating, with 97% of owners saying their next vehicle will be a PEV too!

Why are electric vehicle owners some of the happiest drivers on the planet?

Get along with a PEV owner and you will likely hear about the smooth, quiet ride, the great handling, the fast acceleration, and the minimal maintenance. Some of the other benefits they can now brag about are:

- The EV drivetrain is four times more efficient than an internal combustion engine (ICE) drivetrain
- Nearly instantaneous heat pump technology provides great heaters for cozy winter driving and cooling in summer
- Some models have a heated steering wheel and heated seats
- Digital four-wheel drive (4WD) is more efficient than 2WD
- DC Fast Charging stations provide quick range extension
- Zero local emissions greatly improves air quality in the areas where the car is driven



- Preheating offers a new level of comfort
- Solar and wind can power your drive
- Charging dollars are kept in the local area and with the local utility instead of sending money to foreign oil companies
- Batteries now have a standard 8 year/100,000 mile warranty
- Battery technology/driving distance is continually improving

The average fuel economy for new vehicles hasn't changed much in 40 years for ICE vehicles. They've only improved from 12 to 25 average mpg in four decades. Plug-in electric hybrids (PHEVs) came on the market about 2002 and they attain an average of 45 mpg. The vehicles that rely solely on their electric battery (BEVs) arrived on the scene about 2011 and are averaging the equivalent of more than 110 mpg.

How far does a plug-in car go on a charge?

You can see from the "Plug In Vehicles In Minnesota" chart that most electric and gas hybrid (PHEVs) get 10-50 miles from their electric charge, and after that the internal combustion engine takes over for 300-500 miles. These would include vehicles like the Chevy Volt, Ford C Max Energi, BMW i3, etc. Battery electric vehicles (BEV) that have no internal combustion engine go 60-250 miles on the battery charge only. These models include the Nissan Leaf, Ford Focus Electric, and Tesla Model S. You can also see on the chart that the bigger the battery the larger the tax credit.

Purchase and Operation Costs

Electric vehicles are becoming the choice of many commuters. They pick a model that can get them to work and home again on a single charge, or they choose a PHEV to assist with part of the commute. As more workplace charge stations become available, it will make it easier for more commuters to use EVs. The Manufacturer's Suggested Retail Price (MSRP) on an EV model may be higher until you apply the federal tax credit. Maintenance on an EV is much lower than on a standard ICE automobile. It could be low enough to possibly off-set the cost of replacing the battery at the end of its 100,000 mile life. And operating cost is much lower for an electric vehicle, especially when the owner has an option to charge it at reduced off-peak energy rates.

Most charging of EV's is done at home overnight. Some daytime workplace charging is done to extend range and pre-heat and cool the car, if the employer has one or more charging stations available. Occasionally, EV owners will use public charging stations for longer trips and range comfort. Tesla owners have their own private network of fast charging stations on both coasts and across the US. Most EV cars come from the manufacturer with a Level 1 (120 volt) charging cord that plugs into any standard outlet. This is sufficient for completely recharging a vehicle's battery overnight. For about \$400, EV owners can purchase a Level 2 (240 volt) charger, which is hard-wired to the electrical panel, and charges a vehicle two or more times faster than

Continued on the next page...

Worried about Water in Your Basement This Spring?

Prevent expensive water damage with a water sensor from Heartland Security.

Our system will notify you immediately if your sump pump stops working or water starts leaking into your home.

Call us today and be prepared before the spring rains turn into a headache!



A Subsidiary of:



1-888-264-6380 HEARTLANDSS.COM



Coop Members: Ask about your discount!



Industry News

Wright County enacts emergency moratorium on solar projects

What began as a discussion about an amendment to allow solar projects on restricted land with no building entitlements resulted in the Wright County Board voting unanimously to enact an emergency moratorium on new solar project applications in the county during its Tuesday morning meeting.

Four weeks earlier, the board tabled discussion on the amendment and directed Asst. County Attorney Greg Kryzer to outline the county's options regarding solar projects. Those options included approving the amendment, denying the amendment, adopting a different amendment or overlay district to further restrict where solar projects could be developed, or enacting an emergency moratorium on solar projects in the county. The emergency moratorium will be in effect until a public hearing at 9:30 a.m. Tuesday, May 10, to consider a moratorium to be in place for up to one year.

Township officials from Buffalo, Clearwater, Franklin, Monticello, and Southside townships expressed support for a moratorium. Franklin Township Supervisor DeWayne Bauman referenced the eight-megawatt solar project that the Public Utilities Commission approved, which is currently being developed in Buffalo Township.

"It's a disaster out there," Bauman said. "They cleared 60 acres of trees. They're moving in 215,000 cubic yards of soil."

"We need to slow this down," Buffalo Township Supervisor Don Schmidt added. "People are appalled at what happened to us. We need to look at the effect on the county and the townships. Maybe we can avoid mistakes and make it workable so it suits more people."

~HJ Pub

Excitement is growing for PEVs!

a Level 1 charger. DC Fast Chargers (208 or 480 volt, three-phase) are more expensive, but can be purchased for extremely fast charging. Normally, DC Fast Chargers are installed at public charging locations where car owners are likely to use them on road trips to extend their miles.

To see where current charging stations

are located in Minnesota, go to: www.pluginconnect.com. If you're interested in the Tesla supercharger station locations, go to: <https://www.teslamotors.com/supercharger>. As more electric vehicles are purchased, more charging stations will begin to be installed. And as more charging stations are installed, it is likely more electric vehicles will be seen on our roadways.

Plug-in vehicles available in Minnesota (March 2016)

Manufacturer									Range		Charging speed (miles/hr)			Performance				
Name	Model	Photo	Seating	PEV Type	Battery size (kWh)	Base MSRP	Federal tax credit	Price after federal tax credit	Electric Range (miles)	Total Range (miles)	Level 2 Charging Rate (kW)	Level 1 120v	Level 2 240v	DCFC 400+v	MPGe/MPG	Top Spd (mph)	Accel. 0-60 mph (sec)	Crash Rating
Audi	A3 E-Tron		5	PHEV	9	\$37,900	\$4,200	\$33,700	17	430	3.3	4	8	N/A	86/39	130	7.6	NR
BMW	i3		4	BEV	22	\$42,400	\$7,500	\$34,900	81	81 (150)	7.4	5	27	166	124 (39)	93	7.0	4 star
BMW	i8		4	PHEV	7.2	\$141,000	\$3,793	\$137,207	15	330	3.3	3	7	N/A	76/28	155	4.2	NR
BMW	X5 xDrive40e		5	PHEV	9	\$62,100	\$4,700	\$57,400	14	540	3.3	2	5	N/A	56/24	130	6.5	NR
Cadillac	ELR		4	PHEV	17.1	\$65,995	\$7,500	\$58,495	40	340	3.3	4	8	N/A	85/32	130	6.4	NR
Chevrolet	Volt (2017)		4	PHEV	18.4	\$33,170	\$7,500	\$25,670	53	420	3.3	4	10	N/A	106/42	98	8.4	N/A
Ford	C-Max Energi		5	PHEV	7.6	\$31,770	\$4,007	\$27,763	21	550	3.3	4	10	N/A	88/38	90	7.9	4 star
Ford	Focus Electric		5	BEV	23	\$29,170	\$7,500	\$21,670	76	76	6.6	5	22	N/A	110	84	10.3	5 star
Ford	Fusion Energi		5	PHEV	7.6	\$33,120	\$4,007	\$29,113	21	550	3.3	4	10	N/A	88/38	85	8.5	5 star
Nissan	Leaf		5	BEV	24 or 30	\$29,010	\$7,500	\$21,510	84 or 107	84 or 107	3.3 or 6.6	5	11 or 22	152	114	90	10.1	5 star
Porsche	Panamera S E-hybrid		2	PHEV	9.4	\$77,000	\$4,752	\$72,248	16	540	3	3	6	N/A	65/25	167	5.2	NR
Porsche	Cayenne S E-hybrid		5	PHEV	10.8	\$93,000	\$5,300	\$87,700	14	480	3	3	6	N/A	65/25	151	5.4	NR
Tesla Motors	Model S		5	BEV	70 or 90	\$75,000	\$7,500	\$67,500	240/270	240/270	10 or 20	4	60	375	101	155	2.8	5 star
Tesla Motors	Model X		7	BEV	70 or 90	\$80,000	\$7,500	\$72,500	210/250	210/250	10 or 20	4	55	341	92	155	3.2	5 star
Volvo	XC90 T8		7	PHEV	9	\$69,000	\$4,600	\$64,400	14	350	3.3	2	5	N/A	53/25	125	5.9	NR

This crowdsourced table was updated in March 2016 by Jukka Kukkonen, PluginConnect.

Photos and information sources: Manufacturers' websites and www.fueleconomy.gov

More info: www.pluginconnect.com

March Outage Summary

March had thirteen outages, affecting 55 consumers. Five were caused by squirrels and small animals.

The largest outage affected 19 accounts on Wednesday, March 9 about 8:19 a.m. near Glencoe. A failed insulator was the cause. Members were without power for 42 minutes.

The second largest outage affected 17 members southwest of Watertown. Power went out about 3:53 a.m. on Monday, March 28. Cause of outage

was unknown. Duration of outage was just under two hours.

Most outages affect only one or two members. They are frequently caused by small animals, trees in the line, equipment failure, or motor vehicle/machinery accidents. Larger outages affecting hundreds of members at a time are usually caused by transmission outages, storms, equipment failure to substation equipment, or accidents. Restoration time on weekend and evening outages, when line crews are called out from home, usually take a little longer to get back on than outages when crews are already out working on the project.

CoBank awards \$5,000 in matching funds to MCPA's Operation RoundUp



CoBank, a cooperative bank serving vital industries throughout rural America, has made a \$5,000 matching contribution to the MCPA Operation RoundUp Program. The donation of unclaimed capital credits from McLeod Co-op Power was matched up to \$5,000 by

CoBank through its Sharing Success program. Sharing Success was established in 2012 to celebrate the International Year of the Cooperative. The response from the bank's customers was overwhelmingly positive. Since the program's inception, CoBank and its customers have together provided nearly \$14 million in support to charitable organizations across the nation.

MCPA News Ads — Free want ad service for members

Please limit your ad to nine words. Use the coupon printed here or available at McLeod Cooperative's front desk to submit your ad. Ads will be printed for one month only. Please submit a new ad if you want it published more than one month. Include your name and address, which will be used for identification purposes only. Ads must be received by May 27 to be included in the June issue.

Please run this ad in the next MCPA News

Name: _____

Address: _____

Telephone number: _____

Please check ad category

- Giveaway
- For Rent
- For Sale
- Wanted

Remember to limit your ad to nine words!

1 _____ 2 _____ 3 _____

4 _____ 5 _____ 6 _____

7 _____ 8 _____ 9 _____

Clip and Send to: McLeod Cooperative Power, ATTN: Classified Ads
P.O. Box 70, Glencoe, MN 55336

For Sale - Miscellaneous

- Box spring & mattress. 320-864-3808
- Topper for S10 Chevy. 320-864-3808
- Haier 20in X 20in compact fridge. Works good. \$25. 320-583-3888 after 4 p.m.
- Plant growing light. 4 shelf, 6ft tall, 2ft wide. \$75/offer. 320-583-3888 after 4 p.m.
- Water cooler 3 or 5 gallon. Works good. \$25/offer. 320-583-3888 after 4 p.m.
- Men's medium black leather motorcycle jacket. New condition. \$250. 320-583-2588 after 6:30 p.m.
- Painted vintage wooden beds, iron bed, fainting couch. B/O. 320-328-4041
- Vintage chair, couch set, 50 vintage ladies hats. B/O. 320-328-4041
- 1972 16ft Lund boat w/trailer and 18hp motor. B/O. 320-510-4075
- Buderus fuel oil boiler. Heats 2700 sq ft. 320-395-2861
- Vintage chests 5/6 drawers; 1950's cabinet Viking sewing machine. 952-353-2448

- One vintage Johnson Sea Horse boat motor. B/R/O 320-587-7292
- One 6.5 hp Johnson Sea Horse boat motor. B/R/O 320-587-7292

For Sale - Farm

- 800 gallon round plastic tank. 320-864-4496
- Two wheel farm trailer. \$35. 320-587-7746
- Case IH Magnum tractor 7120 MFWD, 6,400 hrs. Real nice. 612-220-4514
- Farmhand 810 feedmaster w/4 screens & H806-A cornsheller attachment. Shedded. 507-327-1869
- Winpower model 50/30 PTCO tractor driven alternator on trailer. 507-380-8778
- Hay and straw. 320-587-5599
- Two stall horse trailer. 320-587-5599

Wanted

- Bale elevator. 320-296-6061
- VCR including remote. Good working order. Leave message. 952-467-2103

These want ads are designed to help members buy items from or sell items to other members, or rent their property to members. They are not designed to advertise services or for-profit business pursuits. That is why we do not offer a services column and do not accept advertisements for commercial businesses.

Disclaimer – McLeod Cooperative Power Association (MCPA) assumes no liability for the content of, or reply to, any item posted. The party posting any advertisement assumes complete liability for the content of, and all replies to, any advertisement and for any claims against MCPA as a result thereof, and agrees to indemnify and hold MCPA harmless from all costs, expenses, liabilities and damages resulting from, or caused by, any advertisement or reply thereto.



Operation RoundUp is always looking for more members to participate

Of the \$16,000 in funding donated this year by Operation RoundUp to community programs in our area, over \$7,500 came from the Co-op's unclaimed capital credit fund, \$5,000 from a matching grant from CoBank, \$1,000 from Great River Energy, and only \$2,500 was from MCPA member's rounding up their electric bills. The Co-op tries to locate members with unclaimed capital credits and holds the funds at least seven years before they can be donated to Operation RoundUp for charitable and educational purposes.

It would be excellent if we could see greater member participation in the Operation Round Up Program to fund these local community projects. Currently 436 MCPA accounts, out of a possible 6,700 accounts, participate in Operation Round Up. We can do better than that.

Signing up is easy. After that your bill will always be rounded up to the nearest whole dollar amount. The difference between your actual bill and nearest whole dollar amount will go to Operation Round Up each month. It is a tax-deductible donation and the receipt for your annual donation is printed right on your electric bill. Any account will donate a maximum of \$11.88 a year, but it will usually be closer to the average \$6.00 per account.

Since the program's inception in 2005, MCPA's Operation Round Up Program has donated over \$50,000 to community projects in our service area. With the participation of more members, we could increase the number of projects that receive funding. Organizations receiving funding touch the lives of members and their families in many ways.

If you do not already round up your bill to the nearest whole dollar amount, please consider signing up using the form on this page. Send it to the Co-op. Mailing the form with your electric bill payment is acceptable. Operation RoundUp is administered by a volunteer board of directors. They do not get paid for their time and efforts.

Yes, sign me up for Operation Round Up. I understand that my bills will be rounded up to the next dollar amount and the proceeds will be used for local charitable programs.

Name: _____

Address: _____

City: _____ Zip Code: _____

Account #: _____

Signature: _____



Contractors working in MCPA service area

Mi-Tech Pole Inspection Services began testing and treating electric poles in the High Island Substation area during the month of April. They will be working in our service area testing poles until late June or early July. The Mi-Tech pole tester will be working near the base of poles and may be operating a four-wheeler in the townships of New Auburn, Green Isle, Dryden, and Arlington in Sibley County and part of Helen Township in McLeod County. The name Mi-Tech is displayed on their truck, however, if members have any questions or ever notice anything they think to be unusual with people working around Co-op facilities, they are welcome to call McLeod Co-op Power.



Burnham Tree Service is working in Camden Township of Carver County trimming and cutting trees during May and June.



IT CAN COOL, IT CAN HEAT

And it can save you energy and money.

An ENERGY STAR® Air-Source Heat Pump functions as a hyper-efficient central air conditioner as well as a source of supplemental heat. It can cool and heat your home while using 72%* less electricity than conventional air conditioners and furnaces.

This eye-opening fact is especially important considering heating and cooling account for more than half the total energy consumed within a typical household.

An Air-Source Heat Pump can bring your home efficiency where it matters most, as well as superior comfort for you and your family.

TYPICAL HOME ENERGY USE
Heating and cooling account for over half of the total energy consumed by an average household.

- 54% HEATING AND COOLING
- 22% ELECTRONICS
- 18% WATER HEATING
- 6% LIGHTING

UP TO **400%**
MORE ENERGY EFFICIENT



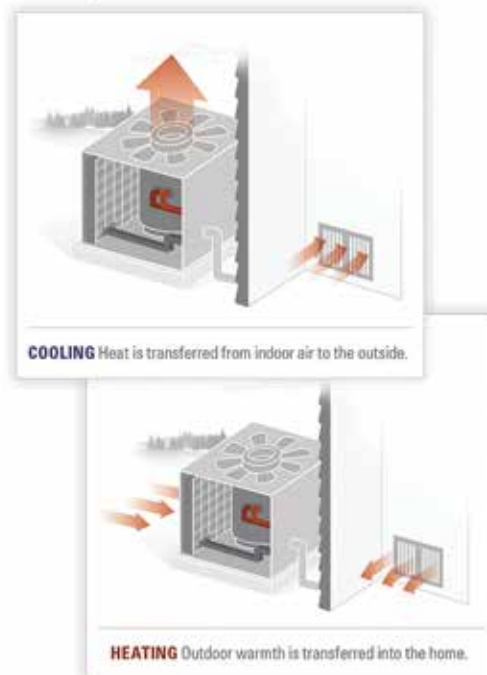
*Source: U.S. Department of Energy

HOW IT WORKS

The fundamental operation of an Air-Source Heat Pump is based on moving heat to and from the outdoor air. When you need to cool your home, it pulls the heat directly from your indoor air, which it then pumps outside.

This process is reversed for the purposes of home heating. The pump doesn't create heat, instead it harvests heat from outside air even as cold as 25°, which it then transfers into your home so you can run your furnace less. In fact, with an Air-Source Heat Pump you may not need to run your furnace at all during spring and autumn. A conventional furnace or other heat source is still necessary during the coldest days of the year.

Air-Source Heat Pump owners are able to flip between heating and cooling from the thermostat.



The ability to switch between air conditioning and heating is made possible thanks to a special valve inside the pump. A pump also contains two sets of coils, a compressor and a fan to circulate the cooled or warmed air, not unlike your refrigerator. The ability for an Air-Source Heat Pump to switch between air conditioning and heating is made possible thanks to a reversing valve that changes the direction of refrigerant flow.

Rebate program for 2016

Electric Storage Water Heating*	\$400
Electric Storage Space Heating**	\$50/kW
Air Source Heat Pump	
14.5 SEER.....	\$480
15 SEER	\$580
16 SEER or higher	\$630
Ductless Air Source Heat Pump	
Delivered Fuels.....	\$300
Primary Electric Heat	\$500
Ground Source Heat Pumps (controlled or uncontrolled)	
	\$400/ton
ECM (fan motor)	\$100
Recycling of Old Refrigerator or Freezer with documented proof of recycling	
	\$75
LED Yard Light	\$60
ENERGY STAR Swimming Pool	
Air source heat pump	\$400
Variable speed pump	\$200
ENERGY STAR Dehumidifier	\$ 25

* Marathon or equivalent energy rated heater that is being installed on the Storage Program.

** ETS space heating rebate is exempt from \$2,000 per member maximum rebate limit.

There is a \$2,000 maximum rebate per member per year. Only Storage Space Heating rebate is not included in the \$2,000 cap. Rebates are always on a first come, first serve basis, so please turn in your paperwork promptly. Rebate forms are available for download from the Co-op's website. Air source heat pump rebate forms should be completed by installing contractor. Rebates for high efficiency heat pumps will continue to require installation by a "registered contractor" which has been designated as a quality installer and is listed on the hvaceducation.net web site. A list of all "registered" contractors in Minnesota is on our cooperative web site at www.mcleodcoop.com. There will be no rebates on central air conditioners in 2016. The Cooperative encourages any member replacing their air conditioner to upgrade to an ENERGY STAR rated air source heat pump.



Rebate forms must be received by December 20, 2016 to be eligible for rebate.

Rebates up to \$630 available when you install ASHP

Besides being one of the most efficient ways to heat and cool your home, an air source heat pump (ASHP) can also save you a lot of money when operated on the Co-op's off-peak electric rate. If it is installed by a certified quality installer it could also be eligible for a \$480-\$630 rebate from the Co-op. See list of certified ASHP contractors at www.mcleodcoop.com (click ABOUT, then OUR PARTNERS, then PUBLIC SEARCH FOR CONTRACTORS, then select ASHP).



Mail-In Rebate up to \$15 value

on any Energy Star® rated LED Lighting

- Purchase up to 5 Energy Star® rated LED Lighting products and receive a \$3 rebate per bulb. (\$15 maximum rebate).
- Submit this completed rebate form and cash register receipt showing LED bulb purchase to McLeod Co-op Power. May be sent in same envelope with electric bill payment or mailed separately.
- Purchase of bulbs and submission of rebate form must both be between Jan. 1, 2016 and Nov. 30, 2016. Any brand LED bulb qualifies.
- Rebate will be applied to electric account as a credit within 60 days. **May not be combined with other MCPA rebates.**

Member Name: _____

Address: _____

Phone: _____

email: _____

of bulbs purchased (Max. 3): _____

Acct. #: _____ Loc. #: _____



Mail Rebate to:
McLeod Co-op Power
P.O. Box 70
Glencoe, MN 55336

Only members of McLeod Co-op Power are eligible for rebate. One coupon from MCPA Newsletter for up to 5 LED bulbs for a maximum total rebate of \$15 per customer. Reproductions of coupon are not allowed. **Copy of cash register receipt showing LED bulb purchase must be attached.** Rebate will be applied as a credit to electric account of member named above within 60 days of receipt.

2016 Fluorescent Bulb Recycling Program



McLeod Cooperative Power makes bulb recycling easy and we'll even help pay the fee.

Here's how it works:

- Free recycling of compact fluorescent lamps (CFLs) with coupon. Simply bring your used CFL and FREE recycling coupon to a participating retailer.

Free CFL Recycling ONLY:

- Home Solutions (Norwood Young America)
- Corner Stone Hardware & Mercantile (Lester Prairie)
- Gibbon Lumber & Hardware (Gibbon)

Accept CFLs and fluorescent tubes for recycling:

- Beckler's Hardware Hank (Bird Island)
- Hite Hardware (Glencoe)
- The Hardware Center (Gaylord)
- Thomes Bros. (Arlington)

- You must be a MCPA residential or small business member to participate.

- Each coupon may be redeemed for up to 10 bulbs.

While fluorescent lamps are environmentally preferred over incandescents, they do contain a small amount of mercury and if improperly disposed of can be harmful to the environment. It is illegal to place them in the trash.

Free CFL Recycling



Name: _____

Address: _____

City: _____

State: _____ Zip: _____

of bulbs redeemed: _____ (up to a maximum of 10 bulbs)

Coupon expires 12/15/2016. Limit of 10 bulbs per coupon. Coupon valid only when completed. Must be MCPA residential or small business member to qualify. Must be redeemed at participating hardware store: Home Solutions in Norwood Young America, Corner Stone Hardware & Mercantile in Lester Prairie, Gibbon Lumber & Hardware in Gibbon, Beckler's Hardware Hank in Bird Island, Hite Hardware in Glencoe, The Hardware Center in Gaylord, or Thomes Bros. in Arlington.

50¢ off Fluorescent Bulb Recycling



Name: _____

Address: _____

City: _____

State: _____ Zip: _____

of bulbs redeemed: _____ (up to a maximum of 10 bulbs)

Coupon expires 12/15/2016. Limit of 10 bulbs per coupon. Coupon valid only when completed. Must be MCPA residential or small business member to qualify. Must be redeemed at participating hardware store: Beckler's Hardware Hank in Bird Island, Hite Hardware in Glencoe, The Hardware Center in Gaylord, or Thomes Bros. in Arlington.

50¢ off Fluorescent Bulb Recycling



Name: _____

Address: _____

City: _____

State: _____ Zip: _____

of bulbs redeemed: _____ (up to a maximum of 10 bulbs)

Coupon expires 12/15/2016. Limit of 10 bulbs per coupon. Coupon valid only when completed. Must be MCPA residential or small business member to qualify. Must be redeemed at participating hardware store: Beckler's Hardware Hank in Bird Island, Hite Hardware in Glencoe, The Hardware Center in Gaylord, or Thomes Bros. in Arlington.