

McLeod Cooperative Power NEWS

November 2014

In this issue...



Gary Connett's
Farewell Column 2



2015 Calendars are
available..... 2

Official publication of



www.mcleodcoop.com



The Bakken Museum presented "War of The Currents" at St. Paul's Lutheran School in Arlington on Tuesday, October 14.

Approximately 75 students and staff from Trinity Lutheran in Nicollet, Immanuel Lutheran in Hutchinson, Green Isle Community School and St. Paul's Lutheran of Arlington enjoyed an assembly show performed by The Bakken Museum and hosted by Great River Energy and McLeod Cooperative Power Association. The presenters provided students information about electrical generation, transmission, and conservation through the story of Nikola Tesla and Thomas Edison and their historic debate over Alternating Current (AC) versus Direct Current (DC). The presentation provided both visual and interactive discovery with the demonstration of the Tesla coil. Student comments were "That was really cool", "Awesome", "Let's do it again"!



Members are subscribing to the Community Solar Project to give solar a try

Members who have wanted to try renewable generation but don't have the time to invest in researching, planning, permitting, constructing and maintaining their own personal solar array or wind turbine, are signing up for MCPA Community Solar subscriptions. It is simple because the Co-op takes care of all the construction, insurance and maintenance issues. The member gets the kWh produced by their share of the Community Solar Project each month as a credit on their electric bill.



Just like net metering, members get credited for the kWh at the current general service electric rate. When rates go up in future years, the value of their kWh increases along with the rates.

Why is MCPA building an array?

On our Member Satisfaction survey in February, we asked members if they would spend \$1,600 to buy a panel in a community solar array. Over 631 members said they would purchase one or more panels. We have two camps of members — those who want "greener power" and those that do not want rates to rise because of renewable energy.

The community solar project is a way that we can help members who want to install renewable energy do it more cheaply than they can install it in their own back yard. And all costs of the Community Solar Project are included in the buy-in price so only members participating in the project pay 100% of the costs; there is no cost shifting to the members who do not participate. Additional reasons are to provide a simple and convenient way for our members to participate in solar generation and to help MCPA employees gain knowledge about solar products so we can be a resource for members interested in solar.

Any member interested in Community Solar can call the Co-op, stop in, or set up an appointment to meet with an employee to discuss the details. We are more than happy to answer all questions. The License Agreement and answers to frequently asked questions are on the Co-op's website at www.mcleodcoop.com.

Holiday Treats Dec. 19



Plan to visit the Co-op office at 1231 Ford Avenue in Glencoe on Friday, December 19 to enjoy holiday cookies, cider and coffee. Holiday treats will be available from 8 a.m to 4 p.m. on the 19th. Members may also want to meet our new general manager, pick up their 2015 scenic calendar, and register for a door prize. The Co-op will have employees available to answer any questions you have on subscribing to the Community Solar Program or joining a Load Management Program for heating or water heating.

Autopay saves you and the Co-op money every month

This is an especially good time for members to sign up for the Direct Payment (Autopay) Plan. You can get away from writing a check, putting on a stamp and mailing your payment to the Cooperative. It is so simple to sign up. Once on the program, MCPA will automatically take care of the bank draft from your account. You save time and money each month and so does the Cooperative.

- Here is how it works:
- You will receive your normal monthly bill around the 15th of each month, giving you 13 days to review the charges.
 - Your bank account will not be charged until the 28th of the month (or the next business day if it falls on a weekend).

To get on the Direct Payment Plan, just fill out the Authorization for Direct Payment form and return it to the Cooperative along with a voided check. Please allow 3-4 weeks for your enrollment on the program.

Call 1-800-494-6272 today if you need assistance signing up.

AUTHORIZATION FOR DIRECT PAYMENT

I authorize McLeod Cooperative Power Association and the financial institution named below to initiate entries to my checking/savings account. This authority will remain in effect until I notify you in writing to cancel it in such time to afford the financial institution a reasonable opportunity to act on it. I can stop payment of any entry by notifying my financial institution three business days before my account is charged.

Name of Financial Institution _____

Branch _____

City _____ State _____ Zip Code _____

Signature of Member _____

Date _____

Name (Please Print) _____

Telephone # _____

Address (Please Print) _____

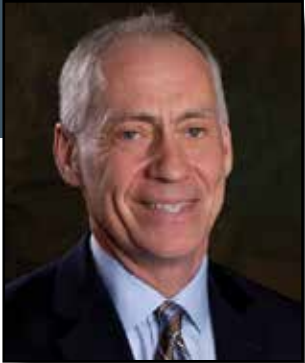
Bank Acct. # _____ Checking _____ Savings _____

PLEASE ATTACH A BLANK, VOIDED CHECK FROM YOUR DESIGNATED ACCOUNT FOR VERIFICATION.

Electric Acct. # _____

Location # _____

Manager’s Message —
by Gary Connett, Interim-General Manager



Leaving MCPA members in good hands
“My, how time flies.”

That old saying passes through my head as I write my final column for the McLeod Cooperative Power Association newsletter. I began my term as MCPA’s interim general manager in March, and I will attend my final board meeting on Nov. 25.

During this time, I had the privilege of working closely with your board of directors. My hat goes off to them; they are very dedicated and focused on keeping your electricity reliable and affordable.

I have also had the great fortune of getting to know the employees who serve MCPA’s members every day. They are a very talented group of energy experts who will always go the extra mile to provide good service to members.

In just eight short months, I have witnessed some impressive accomplishments at MCPA. We hired Dan Schade as the new line superintendent. We finalized a three-year agreement with the International Brotherhood of Electrical Workers that represents our linemen. We agreed to build a community solar array that will provide a simple and convenient way for the members to participate in solar generation if they desire. All the while, the board of directors discussed critically important topics about the future of MCPA.

Your elected directors considered many possible strategies that would shape MCPA’s future. The board ultimately determined that the best decision for the membership was to find a general manager with the ability to lead the cooperative through an expected period of change in the electric utility industry. After spending long hours reviewing resumes and interviewing candidates, they found that person. The Cooperative is finalizing employment details as this newsletter goes to press. So in next month’s newsletter you can expect an introduction to MCPA’s new general manager, who is scheduled to start employment at the Co-op on December 1.

I leave MCPA with great admiration for the board of directors, employees and membership. You live in a great part of Minnesota, and you can be proud to be a member of a fine cooperative like MCPA.

I hope that I played some small part in helping to usher in the next era at MCPA, and I know there is a bright future ahead.

Gary Connett



Scenic 2015 calendars are available

This year’s 2015 scenic Minnesota calendars are available in the Co-op office. Please stop in and pick up a copy. First come, first serve, while supplies last.

Board of Directors

District 1 Oria Brinkmeier, Lester Prairie	District 6 Lester Ranzau, Glencoe
District 2 Joe Griebie, Brownton	District 7 Randy Hlavka, GRE Representative Silver Lake
District 3 Roger Karstens, Vice President Hutchinson	District 8 Keith Peterson, President Hector
District 4 Doug Kirtz, Secretary-Treasurer Hector	District 9 Gerald Roepke, Asst. Secretary-Treasurer New Germany
District 5 Allan Duesterhoeft, Hutchinson	

McLeod Cooperative Power News

USPS 2220 Periodicals Postage Paid at Hutchinson, MN POSTMASTER: Send address changes to McLeod Cooperative Power News P O Box 70, Glencoe, MN 55336-0070	All member story ideas and comments are welcome. Send to Sue Pawelk at the address shown.
The McLeod Cooperative Power News is published monthly for \$4.77 per year for members and \$8 per year for non-members by McLeod Cooperative Power Association 1231 Ford Ave. North, Glencoe, MN 55336-0070	Office Hours: Monday - Friday 7:45 a.m. - 4:30 p.m.
Editor: Sue Pawelk Interim-General Manager: Gary Connett	Phone: 320-864-3148 1-800-494-6272 24-hour outage: 1-800-927-5685 Fax: 320-864-4850
The McLeod Cooperative Power News is the official member publication of McLeod Coop Power Association and focuses on our members, programs and events.	Web site: www.mcleodcoop.com
	Gopher State One Call 811 or 1-800-252-1166

New food co-op starting

A food co-op is organizing in the Glencoe area. They are currently looking for people who are interested in establishing a co-op in Glencoe to provide healthy, organic and locally produced foods. They are accepting non-refundable, \$20 pre-memberships to fund a feasibility study and verify that there is sufficient interest in the area to support such a co-op. If you want a pre-membership form or more information go to their web site at www.glencoefoodcoop.com. They also have a Facebook page.



Going south for the winter

Please notify the Cooperative if you are heading south for the winter. Although the Turtle will send us your meter reading, we still need to know what payment arrangements you prefer.

- Options are:**
- You can pay in advance.
 - Have the post office forward your mail.
 - You can sign up for auto pay and have the payment automatically deducted from your checking or savings account.
 - You can call us with a credit card payment.
- Be sure to make arrangements before you leave by calling 1-800-494-6272.**



Christmas Gift Ideas

This Christmas, you may be able to find a gift for that hard-to-shop-for person at McLeod Cooperative Power. Check out some of our gift ideas.

- **Gift certificate for electricity or high speed internet service.**
- **An emergency pendant and phone notification system for the elderly or disabled.**
- **An exede high speed internet system.**
- **Subscription to a Community Solar Panel.**

Call the Cooperative at 1-800-494-6272 if you would like help with any of these holiday gift ideas.



Spiritwood Station starts up

Great River Energy's Spiritwood Station began producing electricity for the regional electricity market in November. Located near Jamestown, N.D., the facility produces electricity for the regional grid and steam for nearby industrial operations.

New facility will be nearly twice as efficient as traditional coal-fueled power.

Located near Jamestown, N.D., Spiritwood Station is a combined heat and power plant. That simply means that in addition to generating electricity, energy is used for other purposes. At Spiritwood Station, that energy – in the form of heat or “process steam” – will power an adjacent malting facility as well as an ethanol biorefinery scheduled to open in 2015. Spiritwood generates 99 MW of electricity, enough to power 63,000 homes.

Like all combined heat and power plants, the success of Spiritwood Station depended on firmly established “steam hosts,” which are industrial facilities that use thermal energy from the power plant in place of natural gas or another fuel.



Recycle holiday light strings

For your convenience, MCPA will be collecting old holiday light strings in our office. We will collect old light strings and provide them to Adult Training and Habilitation (ATHC) where all the components are recycled. ATHC provides jobs for disabled persons sorting and recycling light strings, old electrical cords, appliance and telephone cords. There is no charge to drop off your cords. Battery chargers and adapters are not accepted.

When is Dual Fuel controlled and why?

Members with Dual Fuel systems will periodically have their electric heat controlled as weather conditions, prices in the wholesale energy market, and regional power supplies dictate. Electric heat on Dual Fuel can be controlled for up to 400 hours per year and up to 12 hours in one stretch without recharge, so you want to make sure your back-up heating system is automatic and able to heat your home on the coldest winter nights for extended periods. Although control

most usually will occur between 4 and 10 p.m. on a week night, it can happen in the morning and it can happen on a weekend.

Make sure your backup fuel supply is adequate!

For members with peak shave water heaters or Dual Fuel, control times are available daily by going to the Cooperative's web site. Click on “Is it a Peak Control Day?” on our home page for more detailed information and historical control times.

Using fireplaces efficiently

By James Dulley

Dear Jim: We like to use our brick open wood-burning fireplace, but it makes the rest of the house cold. Our heating bills are high enough, so what simple things can we do to make the fireplace more efficient? - Jan W.

Dear Jan: During the winter, a warm fire can be quite comfortable. Radiant heat from the flames and coals keeps you warm when you are sitting directly in front of an open fireplace. But unfortunately, most fireplaces lose more heat than they produce.

That warm, relaxing open fire is actually costing you a lot of money – in several ways. First, for some, firewood must be purchased, which is not cheap. Second, the radiant heat feels nice in front of the fire, but already-heated air is being sucked up the chimney from the rest of your house. This makes your heat pump or furnace run longer. Third, if there is no damper on the fireplace or the fireplace is not fitted with its own outdoor air source, indoor air is escaping up the chimney when the fireplace is not in use. Adding a source of combustion air that ducts into the fireplace can help a great deal – and this works well in combustion with glass doors. The fire draws the air it needs for proper combustion and draft from outside, rather than conditioned air from inside.

The best tip is to avoid using the fireplace in extremely cold weather. All of the indoor air lost up the chimney is being drawn outdoors through leaks in the house exterior. During milder weather, the air leaking indoors is not as cold so less energy is needed to warm up this cold air.

It also helps to crack open a window a little in the room by the fireplace and close doors leading to the room. Much of the excess air being drawn up the chimney will be cold outdoor air from the open window. When sitting right in front of the hot fire, you probably will not notice the chilly breeze.

Do not place wood into the fire several hours before bedtime so the fire is totally out by the time you go to sleep. It is not safe to leave a smoldering fire. Also, if the fire is completely out, you can close the chimney damper to block room air loss without filling the room with smoke.

If you make just one investment to improve the efficiency of your fireplace, it should be to install high-quality glass doors. These doors control the amount of indoor air that escapes up the chimney when a fire is burning and also when one is not.



These images show various types of heat-circulating fireplace grates heating indoor air. Some grates use fans, and others rely on natural convection circulation.

Photo credit - Northline Express

High-quality fireplace doors are not cheap, but they are worth the expense. The best doors are relatively airtight when closed. By adjusting combustion air vents in the bottom of the glass door frame, you can still have a raging fire without major indoor air loss.

Keep in mind, the fire does need an adequate supply of combustion air for an efficient, clean burn. If the air flow is reduced too much, creosote buildup occurs, leaving the potential for a chimney fire. I recommend having the chimney inspected and regularly using several squirts of a creosote control spray during each fire.

Burn only well-seasoned wood or no more than one unseasoned log to three seasoned ones. If you try to burn more unseasoned wood, it requires more combustion air to keep it burning well, which draws even more air out of your home.

There are several designs of heat-circulating grates that increase the heat output from a fireplace. Many efficient grates are designed to fit snugly under the bottom edge of the fireplace doors and contain an electric blower that circulates indoor air through the grate, keeping the air warm.

If you decide to purchase a heat-circulating grate, select a model with a blower that has several speeds



This Draftstopper chimney pillow is used to block indoor air leakage through the chimney when there is no fire. It is shown in its fully inflated state. In use, it is inflated after it is placed inside the flue.

Photo credit - Battic Door

and a thermostat with an on/off switch. This switch shuts off the blower when the fire burns down. If you prefer to use the fireplace with the doors open, tubular heat-circulating grates are available to blow the heat directly out the front. Other models have no blower and rely on natural convection.

Stoll Fireplaces makes a unique heat exchanger, which mounts at the top of the fireplace opening, creating a tremendous amount of heat output. These models work with gas or wood-burning fireplaces.

A circulating heat exchanger with built-in glass doors is also available for a more airtight combination. Also, an optional upper oven section is available for cooking and baking, which can help reduce energy use.

When your fireplace is not in use, insert an inflatable chimney pillow or balloon in the fireplace flue. This



These are simple, contemporary style bi-fold fireplace doors mounted over a heat-circulating grate. Notice the speed control knob on the front.

Photo credit - Stoll Fireplaces

Using fireplaces efficiently: Practical solutions



This heat-circulating heat exchanger has a heat output of up to 50,000 Btu per hour. Notice how the flames reach the upper cooking/baking chamber.
Photo credit – Stoll Fireplaces



Heavy, decorative welded-steel fireplace doors control the amount of indoor air lost through the chimney and the amount of combustion air to the logs.
Photo credit - Stoll Fireplaces

seals much better than the chimney damper. Once the pillow is inflated, it should stay in place. Some models include a pole to keep it steady. Chimney top dampers, which operate from indoors with a chain, also help



Spray several squirts of Anti-Creo-Soot into each fire to control creosote buildup in chimney.
Photo credit - SaverSystems

reduce air leakage and keep critters and debris out of the chimney. It's a good idea to hang a sign or ribbon in the fireplace to indicate that the damper is shut or a pillow is installed. This will hopefully stop someone from building a fire when the chimney is closed.

For additional tips and information about fireplace efficiency, check out TogetherWeSave.com's Home Efficiency Analysis Tool (<http://homeefficiency.togetherwesave.com>).

The following companies offer fireplace efficiency products: Battic Door, 508-320-9082, www.batticdoor.com; Diamond W Products, 248-652-8833, www.diamond-w.com; Northline Express, 866-667-8454, www.northlineexpress.com; SaverSystems, 800-860-6327, www.homesafetyproducts.biz; and Stoll Fireplace Inc., 800-421-0771, www.stollfireplaceinc.com.

COPYRIGHT 2014 JAMES DULLEY

Industry News

Canadian power producers want to keep U.S. border open

"In a very real sense, the North American electricity market is borderless," Canada's electric industry wrote to U.S. energy regulators last month. There are more than 35 high-voltage connections across the border. Another six lines will be in service by the end of the decade or are planned, the Canadian Electricity Association wrote to the U.S. Department of Energy, which is currently conducting the first Quadrennial Energy Review.

For the most part Canada is a major exporter to the United States - especially in the eastern half of the continent. In 2013, Canadian power producers exported almost 63,000 gigawatt-hours of electricity to the United States, mostly from Quebec (27,000 GWh), Ontario (17,000 GWh) and Manitoba (10,000 GWh). But the flow is not entirely one-way. Canada also imported nearly 11,000 GWh from the United States mostly into British Columbia (7,000 GWh) with small amounts into other provinces to even out short-term and seasonal imbalances between supply and demand. Exports account for 5-10 percent of Canada's power production, according to the CEA. By contrast, Canadian exports accounted for only a very small percentage of power consumed in the United States.

In some border areas, however, the impact of Canadian energy exports is significant. Canada supplied 6 percent of all electricity used in New York and Michigan in 2010, rising to 12 percent in Minnesota and North Dakota and as much as 18 percent in Maine and 38 percent in Vermont.

The two electric systems are highly complementary. In many parts of Canada, power use peaks in winter, while U.S. power demand peaks in summer. Electricity trade enables generation capacity to be utilized more efficiently. More than 80 percent of Canada's power comes from zero emissions sources, including hydro, nuclear and wind, and the proportion is increasing as old coal-combustion plants are retired under tough federal emissions standards finalized in 2012.

Canadian power is therefore a good match for states south of the border trying to lower carbon emissions and boost renewable generation through Renewable Portfolio Standards. According to the CEA, exports of hydropower from Manitoba helped reduce greenhouse gas emissions in the U.S. Midwest by 47 million tons between 2006 and 2012. Exports of hydropower from Quebec to neighboring areas cut emissions by 53 million tons, equivalent to removing 13 million vehicles from the road.

~WKZO

PROTECT WHAT MATTERS MOST



Heartland Security

The Power to Protect™

1-888-264-6380



Protect your home and family against:

- Intrusion
- Fire Damage
- Smoke Damage
- Frozen Pipes
- Sump Pump Failure
- Power Failure
- Carbon Monoxide
- Medical Emergencies

Watch live video, arm or disarm your system, and control your lights and thermostats from easy-to-use web and mobile interfaces.



HEARTLANDSS.COM

Late Night FREE Zone only for exede customers

Exede customers using the Co-op's high-speed internet service, can download files, music and movies from midnight to 5 AM any day of the month without using up any of their bandwidth for the month. It is called exede's Late Night FREE Zone.

This Late Night FREE Zone makes it possible for people working from home to download larger quantities

of files or data overnight for work. It could be great for a night owl who wants to download a movie that would not normally be possible with the customer's lower level bandwidth package.

If you have questions, or want to sign up for the faster rural internet service called exede, give the Co-op a call at 1-800-494-6272.

MCPA News Ads — Free want ad service for members. Please limit your ad to nine words. Use the coupon printed below or available at McLeod Cooperative's front desk to submit your ad. Ads will be printed for one month only. Please submit a new ad if you want it published more than one month. Include your name and address, which will be used for identification purposes only. Ads must be received by **Nov. 26** to be included in the Dec. issue. Thank you!

Please run this ad in the next MCPA News

Name: _____

Address: _____

Telephone number: _____

Remember to limit your ad to nine words!

1 _____ 2 _____ 3 _____

4 _____ 5 _____ 6 _____

7 _____ 8 _____ 9 _____

Clip and Send to: McLeod Cooperative Power, ATTN: Classified Ads

P.O. Box 70, Glencoe, MN 55336

Please check ad category

☐ Giveaway

☐ For Rent

☐ For Sale

☐ Wanted

For Sale - Miscellaneous

- Good de-nailed lumber & boards from dismantled granary. 507-964-5574
- Log splitter tractor hyd driven. Price negotiable. 320-587-8065
- Spinnet piano. Good condition. Needs tuning & 1 string. \$500. 320-587-4550
- Sears canister paint sprayer w/hose. Old. Never uses. BO. 612-741-7231

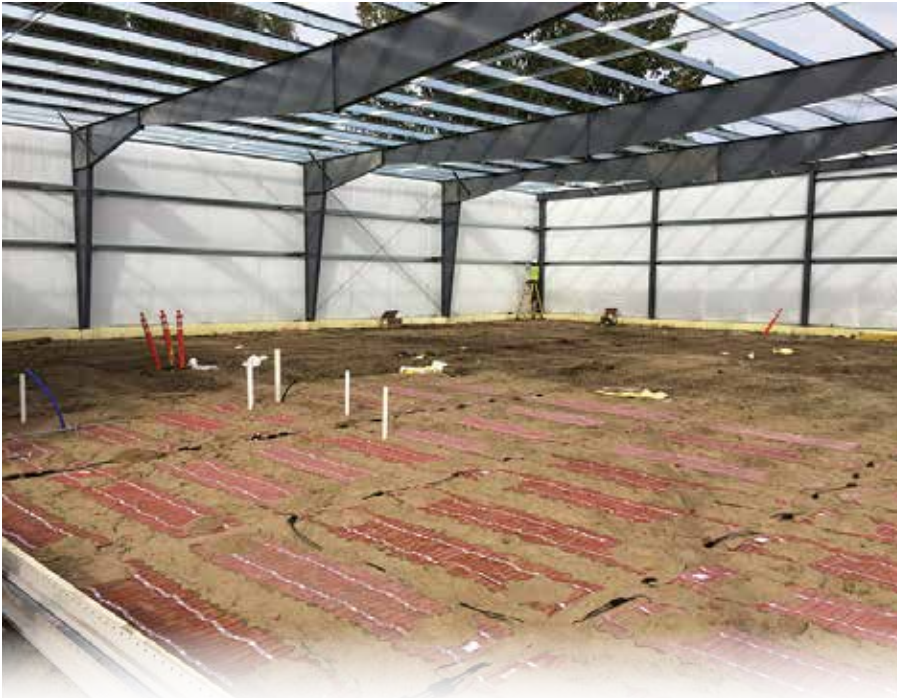
For Sale - Farm

- Winpower 50-30 generator. \$1,500. 507-327-1869
- 2 square dance dresses. Med, red/white, mult-colored floral. \$25/each. 507-964-5404
- 1981 Jayco Heritage motorhome, AC/heater. Good for hunting. 320-587-4446
- Northern Hydraulics 5 1/2 ton high log splitter. 320-864-4376

Cleaning out your garage, attic or spare room?
Try listing it for free in the MCPA classifieds?

These want ads are designed to help members buy items from or sell items to other members, or rent their property to members. They are not designed to advertise services or for-profit business pursuits. That is why we do not offer a services column and do not accept advertisements for commercial businesses.

Disclaimer — McLeod Cooperative Power Association (MCPA) assumes no liability for the content of, or reply to, any item posted. The party posting any advertisement assumes complete liability for the content of, and all replies to, any advertisement and for any claims against MCPA as a result thereof, and agrees to indemnify and hold MCPA harmless from all costs, expenses, liabilities and damages resulting from, or caused by, any advertisement or reply thereto.



An installation of electric heating mats is shown before the final inches of sand were brought in to cover the area. Eventually the entire concrete floor was poured at a trucking business near Hutchinson. The mats heat the floor and sand medium below the floor of the offices in the new trucking garage. They are on the Co-op's Storage Space Heating Program. The mats provide a warm, comfortable work environment at low off-peak electric rates.

The employees and directors of McLeod Cooperative Power wish all of our members and their families a blessed Thanksgiving. Take this time to be grateful for the many blessings we each enjoy.

The MCPA office will be closed Thursday and Friday Nov. 27 & 28. Please use the 24-hour outage number to reach the Cooperative for outages, emergencies or other messages: 1-800-927-5685.

September Outage Summary

During the month of September the Cooperative had a total of 31 outages, affecting 712 consumers. Eleven of those outages were caused by squirrels or other small animals and seven were caused by trees hanging over into lines.

The largest outage was on Wednesday, September 3 about 10:52 in the morning. It was a transmission line outage that caused 448 members on the Sherman Substation to lose power for one hour and nine minutes. The accounts affected were in the Winsted and Silver Lake areas.

The second largest outage for the month was caused by a tree hanging over into a line north of Winthrop. It caused 64 members to be out of power for one hour and two minutes. The outage started at 9:38 a.m. on Wednesday, September 10.

Most outages affect only one or two members. They are frequently caused by small animals, trees in the line, equipment failure, or motor vehicle/machinery accidents. Larger outages affecting hundreds of members at a time are usually caused by transmission outages, storms, equipment failure to substation equipment, or accidents. Restoration time on weekend and evening outages, when line crews are called out from home, usually take a little longer to get back on than outages when crews are already out working on the project.

Volunteers needed for Nominating Committee

To elect directors in Districts 4, 5, & 6 at the 2015 Annual Meeting, we need members from those districts to serve on the Nominating Committee. Nominating Committee members participate in the election process by selecting director candidates and submitting their names to the Board for approval. They also assist with collecting and counting ballots at the Annual Meeting. Volunteers are needed from the following townships:

District 4 includes: Boon Lake, Preston Lake, Brookfield, Hector, Osceola, and Kingman Townships in Renville County, and East Lake Lillian Township in Kandiyohi County.

District 5 includes: Lynn, Collins, and Round Grove Townships in McLeod County.

District 6 includes: New Auburn, Green Isle, Arlington, Dryden, Transit, and Alfsborg Townships in Sibley County.

Call McLeod Cooperative Power if you are willing to volunteer for the 2015 Nominating Committee no later than January 2, 2015. Committee meetings are scheduled for January 29 and February 12, 2015. The Annual Meeting is planned for April 14, 2015.

				Ellsworth	Collinwood		Victor	Woodland	Franklin
				3					
	East Lake Lillian			Acoma	Hutchinson	Hale	Winsted	Hollywood	Watertown
	4					7	1		9
Kingman	Osceola	Brookfield	Boon Lake	Lynn	Hassan Valley	Rich Valley	Bergen	Camden	
Bird Island	Melville	Hector	Preston Lake	Collins	Sumter	Glencoe	Helen	Young America	
				5		2			
Norfolk	Palmyra	Martinsburg	Grafton	Round Grove	Penn	New Auburn	Green Isle		
	8								
	Bandon	Wellington	Moltke	Bismarck	Transit	Dryden	Arlington		
						6			

What makes a good director?

At McLeod Cooperative Power we believe that our Board of Directors comprises a pillar connection with our membership and the community at large. Besides meeting the legal requirements for Director nomination, we are seeking individuals who hold some important personal characteristics. We’ve summarized these attributes below.

Possess a sincere interest in preserving the strength of the Cooperative’s operations and maintaining a productive relationship with its consumer-members. McLeod Cooperative Power has assets of about \$25 million, employs 29 full-time people and is responsible for providing quality electric service to more than 6,400 accounts, as well as a variety of ancillary services. Our electric distribution system serves a diverse membership consisting of residences, farms, businesses and industries. While representing all members of the district, **Directors must work with each other to ensure equitable treatment to all members across the entire distribution system.**

Be willing and available to fully participate in the business activities of the Cooperative. Attendance is expected at all scheduled Board of Directors meetings. In addition, from time to time, Directors will be called upon to represent the Cooperative at other meetings and events where their presence is deemed to be beneficial to the Cooperative.

Remain accessible to the members whom they represent. Since the Directors are elected from and by the Cooperative’s membership, it is important that they work to **maintain open lines of communication with their constituents. They should also strive to be knowledgeable about trends and circumstances that may impact the people and communities of central Minnesota,** and be capable of using basic computer skills to receive electronic communications and reports from the Co-op.

Be enthusiastic. During these times of accelerated change, we look for proactive, resourceful and inspired leadership.

Director qualifications per the Co-op Articles of Incorporation

Article 3, Section 2 of the McLeod Cooperative Power Association Articles of Incorporation states the following about director qualifications. No person shall be eligible to become or remain a Director of the Cooperative who:

- A. is not a member in good standing of the Cooperative receiving service at the member’s primary residence or principal place of business in the district from which the Director is elected;
- B. within five (5) years preceding a Director candidate’s nomination was or during service on the Board of Directors is finally adjudged to be guilty of a felony;
- C. within five (5) years preceding a Director candidate’s nomination was an employee of the Cooperative;
- D. is or becomes, or at any time during the five (5) years preceding a Director candidate’s nomination shall have been, employed by a labor union which represents, or has represented, or has endeavored to represent any employees of the Cooperative;
- E. is a child, grandchild, great-grandchild, parent, grandparent, great-grandparent, brother, sister, aunt, uncle, nephew or niece, whether by blood, or in law, of an employee of the Cooperative;

- F. is a person that is child, grandchild, great-grandchild, parent, grandparent, great-grandparent, brother, sister, aunt, uncle, nephew or niece, by blood, or in law, of an incumbent Director that is not up for re-election at that time;
 - G. is in any way employed by or substantially financially interested in an enterprise competing with the Cooperative or any Cooperative-affiliated business;
 - H. is or becomes the full-time employee or agent of, or who is or becomes the full-time employer or principal of, another Director; or
 - I. is absent without cause from three (3) or more regular meetings of the Board of Directors during any twelve (12) month period.
- A member that is an authorized farm corporation, family farm corporation, regular corporation, partnership, limited liability partnership or other business entity may select an individual member residing on or actively operating such business entity to be eligible for election to the Board. A member that is not a natural person may select one of its officers to be eligible for election to the Board, provided that not more than two (2) such officers may serve on the Board at the same time.

MCPA Director Candidate Application

The undersigned, a member of McLeod Cooperative Power Association, hereby applies as a nominee for director of McLeod Cooperative Power Association from District _____ and requests that my name be considered by the Nominating Committee to be placed on the ballot for the next election for director from said district to be held at the next Annual Meeting, April 14, 2015.

I certify that my account is current and I am a member in good standing with McLeod Cooperative Power Association from District _____.

I certify that I am a resident of District _____ and am receiving electric energy from McLeod Cooperative Power Association.

I certify that I am not in a competing business with McLeod Cooperative Power Association.

If elected director, I agree to attend as many meetings of the Board of Directors as possible and to abide by the Articles of Incorporation and By-laws and Policies of McLeod Cooperative Power Association.

Date: _____

Signature: _____

Lower your bill with off-peak programs

One of the best ways to lower your electric bill is to join one or more off-peak programs. You can be guaranteed savings because you will pay less than half of the general service electric rate to heat your water or cool your home. By allowing the Co-op to control when your water heats or by allowing us to cycle your summer cooling on peak days, you get the lower electric rate for all of your water heating and home cooling.

What is the hot water storage payback?

Even if you invest in a new Marathon water heater and pay for the installation and connection to the off-peak controls, after your rebate your investment payback will be fairly short. A family of six would have an average payback of 2.8 years. A family of four would average 3.6 years.

What if you are looking to lower your energy bill for heating?

For a member currently heating with fuel oil, the average payback on investment to add an electric plenum heater or boiler and join the Dual Fuel

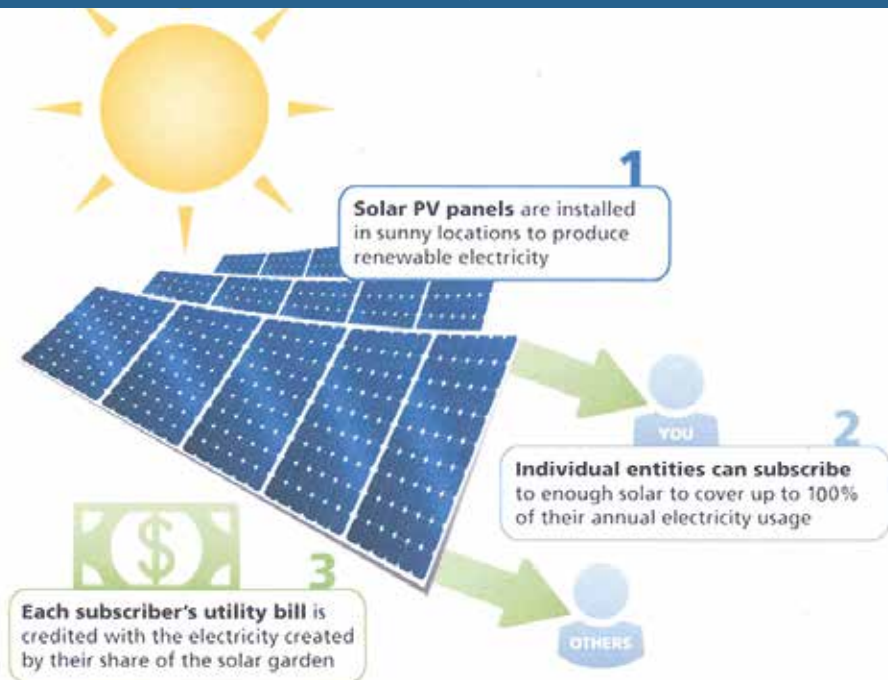
Program is 2.3 years or less, depending upon the size of the home. If the home is large, the savings could likely be under a two-year payback. If you add a new high-efficiency air source heat pump plus a plenum heater to your oil system, the average payback would be 3.4 to 4.9 years, depending upon the square footage of the home.

For a member currently heating with propane, the payback to add an electric plenum heater or boiler for Dual Fuel averages a 4.6 to 5.9 years payback on investment. If you add a new high-efficiency air source heat pump to the plenum heater, you are looking at an average payback of 6.0 to 8.4 years.

Payback years are calculated off of the total estimated installation and equipment costs. Cost comparisons were performed using October 2014 fuel costs of \$1.69 per gallon propane, \$3.33 per gallon #2 fuel oil, and \$0.052 per kWh off-peak electric rates. The calculated payback time in years does not reflect the additional savings when a member enrolls in the Cycled Cooling program, which cuts summer cooling costs by about 60 percent.

Call the energy experts at McLeod Co-op Power today at 1-800-494-6272 to get additional details on heating, cooling, and water heating programs that can dramatically reduce your annual energy bills.

MCPA Community Solar FAQs



How large is the MCPA Community Solar Project?

The Cooperative has available 100 solar panels, which is equal to 41 kilowatt (kWdc). Each 410 Watt panel is approximately 6.5' x 4.5'.

What kind of solar system is it?

It is manufactured by TenKSolar®, which is a Minnesota based company. It utilizes a special Cool Mirror Film manufactured by 3M on its reflectors which boosts energy production. The design we plan to use is one of the safest PV systems on the market and carries the best warranty in the solar industry.

Where will the Array be located?

It will be at 591 Lindbergh Trail in Glencoe Township, on the Cooperative's pole yard property near Hwy. 212.

How can I participate in MCPA's Community Solar Project?

Complete the License Agreement and return it to McLeod Co-op Power with payment. Phone payments are accepted. You can call us at 320-864-3148 or 1-800-494-6272 or stop by the office and we can assist you with your questions, mail you a copy of the agreement, or set up a meeting if needed. Agreements are also available on the Co-op's website www.mcleodcoop.com.

What is the cost?

To purchase the output from one panel for 20 years is \$1,550. Two panels would be \$3,100. Cash, Check, or Credit Card payments are accepted.

What does the cost cover?

MCPA will take care of construction of the array and provide all necessary maintenance and insurance for the life of the project. MCPA will make certain that it meets all applicable codes, standards, and regulatory requirements at the time of installation and throughout the term of the agreement. In the event of equipment failure, MCPA will bring the equipment back to working order as quickly as is reasonably possible.

Is there a limit on panel subscriptions?

A member may license multiple panels, but total annual solar kWh output cannot exceed the annual general service kWh use on the account to which they are being applied. Excess Solar Panel Output credits at calendar year-end will not be refunded, transferred or donated.

What if I move?

If you move to another location on MCPA Co-op lines you may transfer the credits to your new account. If you will no longer be an MCPA member, you can transfer/assign or donate the panel output to another member, friend, family member or organization that is a member of MCPA. The Co-op can assist you with identifying an interested member/organization. If you are unable to find someone to transfer the credits to, a discounted buyout option is available.

Length of contract?

Twenty years, beginning when the array is completed (estimated to be spring of 2015).

How much would my credit be worth each month?

If you purchased the output from one panel, it is estimated to produce an average of 42 kWh per

month. At 2013 rates, this would be equivalent to reducing your electric bill about \$4.90 a month. If electric rates rise to 20 cents per kWh in future years, that 42 kWh would be a credit of \$8.40 a month.

What is the payback on the investment?

It all depends upon the actual kWh production of the array and electric energy prices in the future. If production exceeds our conservative estimates, the payback could be faster. The faster electrical energy rates increase the quicker the investment will pay back.

Does the weather and change in seasons affect the solar production?

Both the weather and seasonal changes will affect the amount of sun reaching the panels. During the summer, the panels will produce more energy because the days are longer and the sun is higher. If it's a cloudy day, the panels will produce less. During the winter, there will be less production because of limited hours of sunlight and, at times, potential snow coverage.

How do you meter the solar array?

A meter will record how many kWh the array produces and sells back into the grid. The total power output of the array each month will be divided by the number of panels in the array. Each participating member will be credited with their share of the array's output based upon how many panels they signed up for in their agreement.

Who utilizes the Renewable Energy Credits (RECs)?

All environmental attributes and RECs are retained by MCPA.