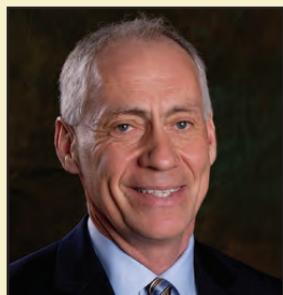


McLeod Cooperative Power NEWS

April 2014

In this issue...



Gary Connett Interim-General Manager2



Nina Grunzke representing Co-op in Washington DC.....8

Official publication of



www.mcleodcoop.com

Members gathered for 79th Annual Meeting



Crowd of members watching presentation by Interim-General Manager Gary Connett.

The members of McLeod Cooperative Power Association gathered for the 79th annual meeting of the Cooperative on Tuesday, April 8, 2014 at the Pla-Mor Ballroom in Glencoe. About 460 members and guests attended the meeting and were served a roast beef dinner.

Three directors were elected for a three-year term each: Oria Brinkmeier, Joe Griebie, and Roger Karstens were elected to serve Districts, 1,2, and 3, respectively. Joe Griebie is a new director elected to fill the seat of Dale E. Peters, who did not seek re-election. Brinkmeier and Karstens were incumbent candidates re-elected to another term.

The 2013 financial report was given by Financial Service Manager Jan Sanderson. Board President Keith Peterson recognized Dale Peters for 30 years as a director for MCPA.

In his report, Peterson described the leadership transition in recent months and he introduced Interim-General Manager



Elected directors (l to r): Oria Brinkmeier of Lester Prairie, Joe Griebie of Brownston, and Roger Karstens of Hutchinson.

Gary Connett (see article on page 2).

Curt Burns announced the Operation Round Up recipients.

Attendance prizes of LED light bulbs and \$25 electric bill credits were also awarded. The grand prize of a \$300 electric bill credit was won by Florence Boettcher of Mayer.

Following the Annual meeting, the new board of directors elected their officers for the coming year. Keith Peterson was selected as board president, Roger Karstens as vice-president, Doug



Grand prize winner Florence Boettcher of Mayer with her \$300 electric bill credit.



More than 450 people attended the Co-op's annual meeting in Glencoe on April 8.



Employee Justin Kohls explains load management programs to members.



Employees Katie Ide, Jan Sanderson and Teri Martin worked voting district registration at the annual meeting.

Kirtz as secretary-treasurer, and Gerald Ropeke as assistant secretary-treasurer. Randy Hlavka will be the Cooperative's representative to Great River Energy.

How your dollar was spent in 2013

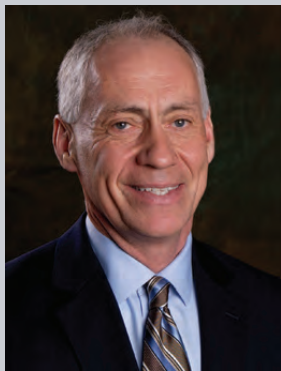
Purchase Power	64 cents
Depreciation	8 cents
Operations	5 cents
Maintenance	5 cents
Admin/General	5 cents
Interest	5 cents
Electric Margins	4 cents
Customer Accounts & Collections	2 cents
Customer Info	2 cents



Dale E. Peters closes three decades on board

In 2014, Dale E. Peters chose not to seek re-election to MCPA's Board of Directors. We thank Dale for his 30 years of dedicated service to the Cooperative and the members of District 2. Dale also served as Secretary-Treasurer on the MCPA Board for the past 27 years.





Gary Connett
*Interim-General
Manager*

Gary is Director of Member Services & Marketing at Great River Energy. He is responsible for demand response, conservation and energy efficiency programs, as well as overseeing member services. He has been with GRE for 39 years. Gary holds a bachelor of arts degree in organizational leadership from Bethel University, St. Paul, and a master's in business administration (MBA) from the University of St. Thomas. Gary is an active member of several organizations and commissions.

**A Message from Keith Peterson
MCPA Board President**



Dear Members:

Last April, my fellow board members elected me to serve as board president. When I reluctantly agreed to take the job, I never imagined this year would have been filled with so many challenges and issues the board had to resolve. We are looking forward to some very positive, stabilizing changes for the rest of 2014.

You probably noticed that we did not have a General Manager's speech on the Annual Meeting agenda. That is because January 4th was Kris Ingenthron's last day with the Cooperative. I can't share any details because it is confidential.

As your board, it is our responsibility to make sure that McLeod Co-op Power has sound management practices and long-term financial stability. We have been working diligently to make sure our Co-op has both.

Since early January, Darrel Beste, the Co-op's Manager of Engineering, and Jan Sanderson, our Financial Services Manager, had been serving as interim co-managers in addition to all of their other responsibilities. Darrel and Jan have each been with MCPA for more than 25 years and have done a great job making sure all of the daily business of the Co-op continued to run smoothly.

During this time, the board has looked at different options and studied what is best for our organization. We did not want to rush into making a quick decision that might be a short-term solution but not the best long-term plan for our Co-op.

We have been very fortunate that Great River Energy, our power supplier, was willing to share Gary Connett with us for a few months. Gary will be serving as our interim-general manager a few days a week. This will allow Darrel and Jan to get back to their regular department responsibilities. Besides tending to the general manager duties,

Gary will also be working with our board of directors to help us find the plan that best meets the long-term needs of McLeod Co-op Power.

I apologize for not making this announcement sooner to the membership, but we could not announce Gary's appointment as interim general manager until after his contract details were finalized at our board meeting on March 25. So we were not at liberty to make any announcements in the newsletter before that date. In January and February, our Cooperative staff kept the place running without missing a beat, and the board met several times to determine a short-term plan of action.

I am very thankful for the many dedicated employees we have at the Co-op. I want to thank the employees for being patient with the board, especially when we could not share much information, and for trusting us to make the right decisions.

I would like to thank our linemen who put in many hours during this brutally cold winter-restoring power in blizzard conditions. Thank you also to the office employees who have pitched in and taken on extra responsibility during this transition period — especially Darrel and Jan for all of their extra work. We have many loyal employees who put their heart and soul into serving you, our members.

Our Interim-General Manager, Gary Connett, spoke to members at our Annual Meeting. Gary brings an in-depth understanding of cooperatives, our business, and member services to this interim position. I believe he will be very helpful in seeing McLeod Cooperative Power through this transition.

McLeod Cooperative Power office will be closed on Good Friday, April 18.

In case of emergency or outage, members may call 1-800-927-5685 anytime 24 hours a day.

"Restoring Your Power" videos

Do you know what to do during a power outage? Do you know how to keep food in your freezer cold or manually open your garage door? Watch the YouTube safety videos produced by Great River Energy. Links to the videos are available on the Co-op's website. Go to www.mcleodcoop.com, click on the Community News header on the top of the page, click on Power Outages in the drop down box, then select the video you want to watch.

Board of Directors

- | | |
|--|---|
| District 1
Oria Brinkmeier, Lester Prairie | District 6
Lester Ranzau
Glencoe |
| District 2
Joe Griebie, Brownston | District 7
Randy Hlavka, GRE Representative
Silver Lake |
| District 3
Roger Karstens, Vice President
Hutchinson | District 8
Keith Peterson, President
Hector |
| District 4
Doug Kirtz, Secretary-Treasurer
Hector | District 9
Gerald Roepke, Asst. Secretary-Treasurer
New Germany |
| District 5
Allan Duesterhoeft, Hutchinson | |

McLeod Cooperative Power News

USPS 2220
Periodicals Postage Paid at Hutchinson, MN
POSTMASTER: Send address changes to
McLeod Cooperative Power News
P O Box 70, Glencoe, MN 55336-0070

The **McLeod Cooperative Power News** is published monthly for \$4.80 per year for members and \$8 per year for non-members by McLeod Cooperative Power Association
1231 Ford Ave. North, Glencoe, MN 55336-0070

Editor: Sue Pawelk
Interim-General Manager: Gary Connett

The McLeod Cooperative Power News is the official member publication of McLeod Coop Power Association and focuses on our members, programs and events.

All member story ideas and comments are welcome. Send to Sue Pawelk at the address shown.

Office Hours:
Monday - Friday
7:45 a.m. - 4:30 p.m.

Phone: 320-864-3148
1-800-494-6272
24-hour outage: 1-800-927-5685
Fax: 320-864-4850

Web site: www.mcleodcoop.com

Gopher State One Call 811 or 1-800-252-1166

Allocation notices on April bill statement

The amount of capital credits allocated to each member for 2013 is shown on the electric bill mailed in mid-April. It is based on margins allocated. MCPA allocations may be refunded to the member at some time in the future when capital credits for 2013 are retired.

The amount shown is not available to be deducted from the bill at this time. It is merely a notice of allocation. For many years the notice of allocation was mailed separately but due to high postage costs we are now economizing and listing it on your bill statement.

Co-ops Fight for Affordable Energy

By Steven Johnson | ECT Staff Writer
Published: March 3rd, 2014
NASHVILLE, Tenn.

NRECA CEO Jo Ann Emerson called on electric cooperative leaders to forge a new legacy for the co-op movement by mobilizing their 42 million members to advance the cause of reliable, affordable electricity. Speaking at the 72nd NRECA Annual Meeting, Emerson challenged co-op managers, directors and staffers to swell the ranks of the Action.coop campaign and bring what she called “common sense” to federal energy policy.

“This is a fight for our survival, and, by God, we are going to put everything we have into it,” she said March 3 at the Music City Center. “We turned the lights on. We keep the lights burning. And now, our goal is to make the light bulb come on in Washington.”

Delivering a serious yet upbeat message, Emerson said co-ops face a great challenge in dealing with Environmental Protection Agency regulations that target the nation’s fuel mix.

But co-ops’ will to meet that challenge is even greater, Emerson added, as she asked attendees to enlist 10 people each in Action.coop when they return to their communities. Action.coop already is responsible for 284,500 messages to EPA, she said.

“Our challenge is set: Tell the EPA what climate regulations will do to our families, our businesses and our communities. And it doesn’t matter if they don’t like our story because at least they will hear our story. And, wow, do we have a story to tell. Cooperatives work,” Emerson said.

Emerson emphasized that co-ops are national leaders in energy efficiency and renewable energy, owning and purchasing more than 5.7 gigawatts of renewable capacity and 10 GW of hydropower. “That’s more than 10 percent of the U.S. total. With one-twentieth of the generation in the U.S. and one-eighth of the energy customers, that is a remarkable achievement,” Emerson said.

Yet intermittent sources such as wind and solar cannot replace the coal-based generation that has been the backbone of the electric grid, Emerson warned.

As a result, she said, co-ops need to be heard on EPA plans that would hamstring future coal plants



NRECA CEO Jo Ann Emerson told electric co-op leaders that they must fight to keep electricity affordable and reliable for their members. (Photo By: Luis Gomez Photos)

by requiring expensive carbon capture and storage controls that are not commercially viable. EPA plans to issue emissions standards for existing coal plants in June.

“These regulations practically mandate an increase to the cost of energy. It is wishful thinking and at great expense to our members,” she said.

Emerson said co-ops have the power to build a future in which they act as engines of community development, improve the quality of life in rural America and deliver electricity free of unreasonable restraints.

“This vision is closer than we think. This vision is within our reach. But we’re going to have to fight for it, whether we want to or not,” she said.

Electric co-ops are working together using the Action.coop campaign. This is a nationwide effort aimed at urging the Environmental Protection Agency to withdraw its proposal to regulate greenhouse gas emissions at new power plants and work with co-ops on developing a “common-sense solution that balances energy needs and environmental concerns.”

We are asking you to please take a moment to sign on. It takes less than 60 seconds to log in and add your name to the message we are sending to Congress and the EPA. On the internet, go to www.Action.coop. You will be asked to type in your name, e-mail address, select your state and co-op. You can read the short message we are sending to Congress and the EPA. And hit the Submit button. It is fast and easy but it is also a powerful way for the Cooperatives to show that our grassroots members want a common sense solution that is balanced and does not increase the cost of electricity needlessly.

By signing up, you join our Co-op grassroots effort to keep rates affordable. We thank you for your help.



Tune up your cooling unit and receive a \$25 credit

Announcing the 2014 air conditioning tune-up program.

Just schedule a tune-up of your central air conditioner or air source heat pump (unit must be at least 5 years old and in working condition to qualify) and when your licensed professional HVAC contractor performs the service work, have them complete the rebate coupon below. Send the completed rebate form to the Cooperative with a copy of the contractor’s invoice. His tune up must include the items on the coupon. After the Co-op receives your documentation, we will credit your electric bill \$25 within 4-6 weeks.

Air Conditioner/Heat Pump Check List

Owner _____
Acct. # _____
Address _____
Location # _____
Phone # _____
Company doing Tune-Up _____
Technician’s Name _____
Company Phone # _____

CHECK LIST

Brand Name _____
Model # _____
Serial # _____
Tons/BTU Rating _____ SEER Rating _____

- Clean Outdoor Unit
- Clean and Inspect “A” Coil
- Check Blower Belt
- Compressor Motor Amp Reading Check
- Compressor Amp Reading Check
- Blower & Oil
- Blower Motor Amp Reading Check
- Check Filter
- Check Refrigerant Level & Pressure
- Blow Out Drain Line
- Visual Inspection of Cooling System

Recommendations _____

Technician Signature _____
Date _____

Storm Safety: When Thunderstorms, Tornadoes Strike

By B. Denise Hawkins

Beware. Spring can usher in more than April showers. Now through the summer months, thunderstorms can quickly roll in and tornadoes can touch down, often during the afternoon and evening hours, according to researchers at the National Oceanic and Atmospheric Administration's (NOAA) National Severe Storms Laboratory.

Follow these tips from NOAA and the American Red Cross to keep you and your home safe when tornadoes and severe thunderstorms come your way.

- Prepare for high winds by removing diseased and damaged tree limbs.
- Listen to local news or National Weather Service broadcasts to stay informed about tornado watches and warnings.
- If in a mobile home, immediately head

to a sturdy shelter or vehicle. Mobile homes, especially hallways and bathrooms, are not safe places to take shelter during tornadoes or other severe winds.

- Designate a family meeting place for shelter during and after a storm. If possible, go to your home's basement, a small interior room, or under stairs on the lowest level. Also, have a battery-operated weather radio handy along with emergency supplies.
- Unplug your electronics. Avoid using electrical equipment and corded telephones.
- Remember that there is no safe place outside during a severe storm. If you are caught in a storm while on the road, the American Red Cross urges drivers to turn their headlights on, try to safely exit the roadway, and park. Stay in the vehicle with your seat belt on and turn on the emergency flashers until the heavy rain ends. If thunder and

lightning is occurring, avoid touching metal or other surfaces that conduct electricity in and outside the vehicle.

- Move or secure lawn furniture, trash cans, hanging plants or anything else that can be picked up by the wind and become a projectile.
- Stay safe after a storm. Remain indoors at least 30 minutes after the last clap of thunder. Also, stay away from downed power lines and avoid flooded areas, power lines could be submerged and still live with electricity. Report them to the Co-op.

Learn more about storm safety at <http://www.nssl.noaa.gov/education/svrwx101/thunderstorms/>

Sources: The National Oceanic and Atmospheric Administration's National Severe Storms Laboratory, and American Red Cross

B. Denise Hawkins writes on consumer and cooperative affairs for the National Rural Electric Cooperative Association, the Arlington, Va.-based service arm of the nation's 900-plus consumer-owned, not-for-profit electric cooperatives.



Storm clouds erupt with lightning. The current in a lightning bolt can produce tens of thousands of amps and more than 100,000 volts. When they strike, find shelter indoors and unplug electrical devices. Source: National Oceanic and Atmospheric Administration

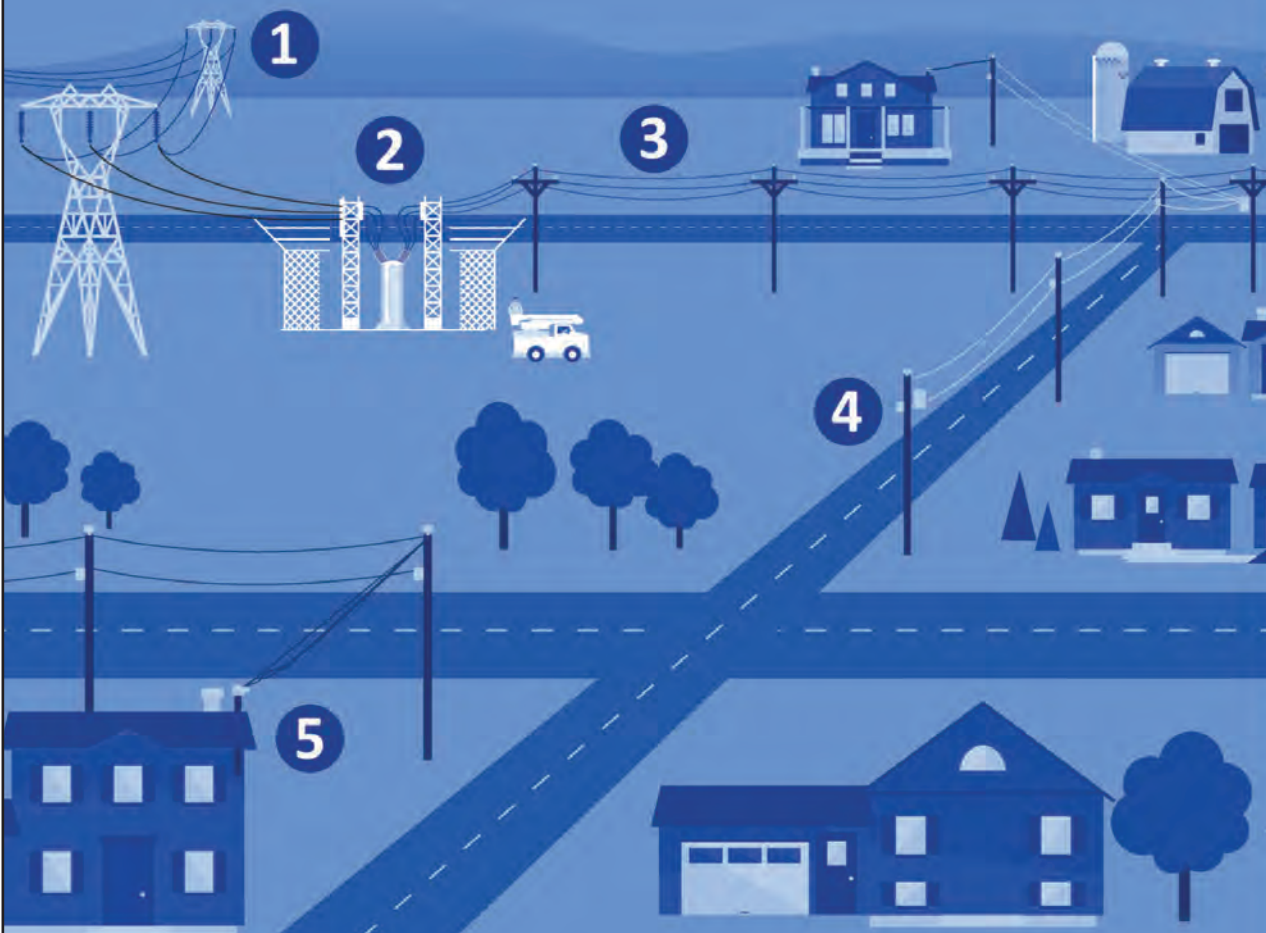


Heed severe storm and tornado warnings when they come. Make sure that you are prepared—keep a flashlight, a battery-operated radio, and non-perishable food among the items in your emergency bag. Source: American Red Cross

Supercell thunderstorms rolling in over the plains provide a backdrop for power lines. On this spring day, tornadoes followed, stretching from eastern Colorado to Oklahoma. The severe weather triggered widespread power outages. Source: National Oceanic and Atmospheric Administration

When a Storm Results in an Outage

Restoring Your Power



During a widespread outage, crews first remove threats to public safety, such as power lines on roads. Then they work through the system, making repairs that will restore the most co-op members first:

- 1 Transmission.** High-voltage transmission lines and substations, which supply bulk power to local co-op distribution substations, must be repaired before other parts of the system can operate.
- 2 Substations.** Next co-op crews repair distribution substations, which supply power to hundreds, or thousands, of co-op members.
- 3 Main lines.** These are the lines leaving the co-op distribution substations. They carry power to large groups of members, such as communities or housing developments.
- 4 Tap lines.** These lines branch off from main lines. They deliver power to transformers (either mounted on poles or on pads for underground service) outside businesses, schools and homes.
- 5 Individual homes.** Finally, crews make repairs to individual service connections affecting a single member.

© 2014 Great River Energy

Outdoor Electrical Safety Tips

Warmer weather brings an increase in outdoor work in many parts of the country, both on the job and at home. Increasing electrical safety awareness can help ensure those activities do not result in injuries and deaths.

The Electrical Safety Foundation International (ESFI) provides the following safety tips:

- Carefully check the location of all overhead wires before using a ladder. All ladders, even those made of wood, that contact a power line can shock or electrocute people coming in contact with them.
- Unplug outdoor tools and appliances when not in use.
- Inspect power tools and appliances for frayed cords, broken plugs and cracked or broken housing. Repair or replace damaged items.
- Water does not mix with electricity. Avoid damp conditions - including wet grass - when using electricity.

Visit www.esfi.org for more ways to keep your home and family safe this spring and beyond.



Industry News

AAA: Range of electric cars cut in cold, hot weather

The range of electric vehicles can be greatly reduced, by up to 57% , depending on the temperature outside, auto club AAA says.

The AAA Automotive Research Center in Southern California found that the average range of an electric car dropped 57% in very cold weather – at 20 degrees Fahrenheit – and by 33% in extreme heat, a temperature of 95 degrees.

“We expected degradation in the range of vehicles in both cold and hot climates, but we did not expect the degradation we saw,” said Greg Brannon, AAA’s director of automotive engineering.

AAA conducted a simulation to measure the driving range of three fully-electric vehicles – a 2013 Nissan Leaf, a 2012 Mitsubishi iMIEV and a 2014 Ford Focus Electric Vehicle – in cold, moderate and hot weather. It tested the vehicles for city driving to mimic stop-and-go traffic between December and January, fully charging each EV, and then “driving” each on a dynamometer in a climate-controlled room until the battery was fully exhausted.

Brannon said two of the vehicles, the Mitsubishi and the Ford, were equipped with dedicated management of the battery temperature. “We were expecting that difference would yield differences in the optimal range of the vehicles in extreme temperatures,” he said. “It did not.” The likely reason: There’s only one source of power in an electric vehicle – the battery. If battery power is being used to heat or cool the battery, it takes power away from the vehicle’s range, he said.

The average electric vehicle battery range for each full charge in AAA’s test was 105 miles at 75 degrees Fahrenheit. That dropped 57% to 43 miles when the temperature was held steady at 20 degrees. Warm temperatures were not as stressful but still delivered a lower average of 69 miles per full charge at 95 degrees, AAA said.

The three vehicles chosen were selected because they’re the most widely available electric cars in the USA, Brannon said. “For most Americans, where a round-trip commute is less than 40 miles, the range of the vehicle will not be a problem,” he said. “However, if the temperature dips down and you want to take a drive to grandma’s house, you might want to think about a charging station along the way.”

Among AAA’s recommendations: storing the electric car in a garage; monitoring recharge times in colder weather; preheating or cooling the car while it’s plugged in to reduce battery drain, and using electric seat heaters to keep warm.

~USA TODAY March 20, 2014, Online Edition
Larry Copeland, Writer USA Today

What are Tamper Resistant Receptacles (TRRs)?

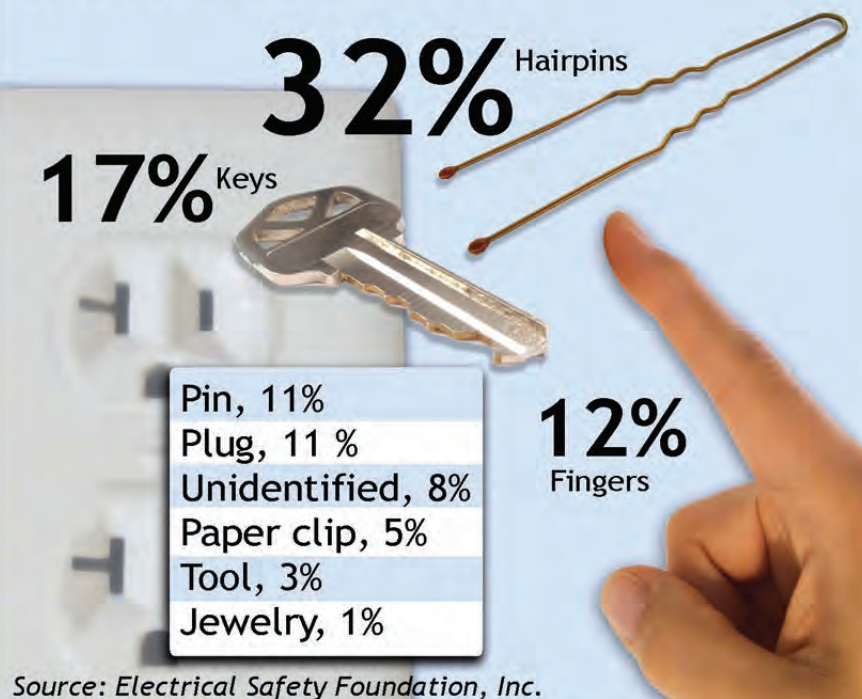
They may look like standard outlets, but tamper resistant receptacles, or TRRs, are different. Their most distinguishable feature – a built-in shutter system that prevents foreign objects from being inserted – sets them apart. Only a plug that applies simultaneous, equal pressure to both slots will disengage the cover plates, allowing access to the contact points. Without this synchronized pressure, the cover plates remain closed.

While a child’s curiosity knows no boundaries, it can sometimes put them in peril, especially when electricity is involved. Located in practically every room of the house, electrical outlets and receptacles are fixtures, but they also represent potential hazards for children.

In recent years, more homes have been equipping their electrical outlets with TRRs, but in many public facilities, like hospital pediatric wards, these safeguards have been required for more than 20 years. Their efficiency also prompted the National Electrical Code to make TRRs standard in all new home construction. Existing homes can be easily retrofitted with TRRs using the same installation guidelines that apply to standard

Objects Commonly Placed in Electrical Outlets

Every year, 2,400 children are injured after inserting household objects into electrical outlets. These are the most common objects placed in outlets:



receptacles. TRRs should only be installed by a licensed electrician and should carry a label from a nationally recognized, independent testing lab such as UL, ETL, or CSA.

TRRs by the Numbers

- Each year 2,400 children suffer severe shock and burns resulting from inserting objects into the slots of electrical receptacles. That’s nearly seven children a day.

- It is estimated that 6-12 child fatalities result from children tampering electrical receptacles.

- Installing a TRR in a newly constructed home is only about 50% more than a traditional receptacle.

- Existing homes can be retrofitted with TRRs for as little as \$2.00 per outlet.

For more information on TRRS, visit www.esfi.org.

Power Line Worker Scholarship Deadline April 17



Any persons interested in applying for a \$500 power line worker scholarship must submit their form to the Co-op by April 17. Contact the Co-op office if you need a form.

MCPA News Ads — Free want ad service for members.

Please limit your ad to nine words. Use the coupon printed below or available at McLeod Cooperative's front desk to submit your ad. Ads will be printed for one month only. Please submit a new ad if you want it published more than one month. Include your name and address, which will be used for identification purposes only. Ads must be received by **April 28** to be included in the May issue. Thank you!

Please run this ad in the next MCPA News

Name: _____

Address: _____

Telephone number: _____

Please check ad category

- Giveaway
 For Rent
 For Sale
 Wanted

Remember to limit your ad to nine words!

1 _____ 2 _____ 3 _____

4 _____ 5 _____ 6 _____

7 _____ 8 _____ 9 _____

Clip and Send to: McLeod Cooperative Power, ATTN: Classified Ads
 P.O. Box 70, Glencoe, MN 55336

For Sale - Miscellaneous

- 1983 Schult Trailer, 16 X 60, 2 bdrm/central air/new flooring. 320-587-8432
- 13" Tire. New \$10. 320-587-9207
- Gas barrel hose \$10. 320-587-9207
- 16 ft Boat 65hp motor, trolling motor & trailer \$1575. 320-587-7746

For Sale - Farm

- Reg. POA mare, DKS Acting Classy, 2 yrs. Asking \$1,200. 320-587-5436
- Van Brunt grain drill. Good condition. Antique. 320-327-2781
- 24ft Allied bale elevator w/electric motor \$360. 952-467-2103

- 2 - 275 gallon fuel tanks on stands \$150/each. 320-587-8065
- 12 row 7 tooth drag incorporators \$150/OBO. 320-522-2167

Wanted

- Buying scrap lead, cash paid, no batteries. 320-221-0724

Cleaning out your garage, attic or spare room? Try listing it for free in the MCPA classifieds?

These want ads are designed to help members buy items from or sell items to other members, or rent their property to members. They are not designed to advertise services or for-profit business pursuits. That is why we do not offer a services column and do not accept advertisements for commercial businesses.

Disclaimer — McLeod Cooperative Power Association (MCPA) assumes no liability for the content of, or reply to, any item posted. The party posting any advertisement assumes complete liability for the content of, and all replies to, any advertisement and for any claims against MCPA as a result thereof, and agrees to indemnify and hold MCPA harmless from all costs, expenses, liabilities and damages resulting from, or caused by, any advertisement or reply thereto.

February Outage Summary

During February there were 24 outages reported on the Cooperative's system.

The largest outage affected 2,945 consumers. On Tuesday, February 11, at 4:54 PM, a transmission line outage caused members served off of the Bell, High Island, Sumter, Helen, and Winthrop Substations to be without power from 12 minutes to 1 hour and 18 minutes. Three of the substations were able to be backed to restore power quicker.

The next largest outage was on Friday, February 21 about 9:32 AM (day of the big blizzard). A broken crossarm brace caused 95 members south of Glencoe to be without power for 33 minutes to an hour and a half as repairs were made.

The next largest outage on Thursday, February 20 about 7:00 PM, caused 77 members to be without power due to a broken line south of Hutchinson. Repair time was 2 hours and 11 minutes.

Most outages affect only one or two members. They are frequently caused by small animals, trees in the line, equipment failure, or motor vehicle/machinery accidents. Larger outages affecting hundreds of members at a time are usually caused by transmission outages, storms, equipment failure to substation equipment, or accidents.

Restoration time on weekend and evening outages, when line crews are called out from home, usually take a little longer to get back on than outages when crews are already out working on the project.

Vehicles for sale

McLeod Cooperative Power is selling two company vehicles that have been in our fleet for many years. A 1996 Plymouth Voyager Minivan and a 2005 Chevrolet Tahoe are being sold "as-is" with no warranty. Both vehicles are being sold to the highest bidder, however, there is a reserve price on each vehicle that must be met.

Sealed bids including your name, address, telephone number and bid price must be mailed to McLeod Cooperative Power, Attention Bob Thomes, P.O. Box 70, Glencoe MN 55336 or dropped in the Co-op's 24 hour payment drop box at 1231 Ford Ave. N., Glencoe MN by midnight April 30, 2014. Bids will be opened May 1. Winning bidders are responsible for any license, transfer fees or taxes.

Vehicles will be available for viewing April 21-30 in the parking lot across the street from the Co-op (former Agri-Fleet/Big Bear store) at the corner of Hwy. 22 and Ford Avenue. Serious bidders may contact Bob Thomes at 320-864-7329 with questions.

1996 Plymouth Voyager

SE Minivan has 103,000 miles, has 7 passenger seating. It has a V-6, 3.0 liter engine, AT, FWD, ABS, AC, PS, cruise control, tilt wheel, AM-FM stereo cassette, dual air bags, two sliding doors. Reserve price: \$ 1,400.



2005 Chevrolet Tahoe LT

Sport Utility 4-door, 4WD, with maximum seating for 9 persons. Tahoe has 113,000 miles. It has V-8, 5.3 liter engine, AT, ABS(4-wheel) StabilTrak, AC front and rear, PW, PL, PS, cruise control, tilt wheel, AM-FM stereo, multi-disc CD, leather seats, running boards, towing pkg, and third row seat. Reserve price \$ 12,000.



Get your Marathon water heater before prices increase

If you are thinking of joining the Water Storage Program, this is the month to do it. Marathon water heater prices will be increasing May 1. So purchase your lifetime warranty Marathon water heater before the price increase happens.

A Marathon 85 gallon is \$1,000 plus tax and a 105 gallon is \$1,050 plus tax through the end of April. Higher prices will go into effect May 1. When you join the Water Storage Program, you receive a \$300 rebate, and the control equipment for off-peak metering. Once on the program, you will receive the low off-peak electric rate for all your water heating. Participate in both the Water Storage and cycled cooling program and get your summer air conditioning energy for less than half the regular rate.

Call McLeod Co-op Power today for details
1-800-494-6272.



- Tough exterior resists dents, scratches and rust.
- Free of ozone-depleting CFCs and HCFCs.
- No-leak warranty for as long as you own your home.
- 6-year warranty on thermostat and elements, including labor.

Great River Energy to invest in solar technology

Projects to be installed at corporate headquarters and cooperative locations through 2015

Maple Grove, Minn., Feb. 14, 2014

Today Great River Energy, Minnesota's largest wholesale electric cooperative and second largest utility, announced plans to construct 650 kilowatts (kW) of new solar energy installations by mid-2015. The first construction project is a 250 kW solar array slated for land south of Great River Energy's headquarters facility and will include a mix of technologies to help determine how solar energy installations can be integrated into cooperative systems. The remaining 400 kW may include up to 20 individual projects located in its member cooperatives' systems across the state.

"Installing these solar panels will provide Great River Energy and our member-owners with experience in solar development. These projects will also help us identify solar technologies that are effective with our electric systems," said Rick Lancaster, vice president of generation, Great River Energy. Construction at the Great River Energy facility will begin this March and is expected to conclude in May.

Project installation throughout Minnesota

Great River Energy is working with its member cooperatives to identify potential sites for 20 kW solar installations in their communities. Site identification, material procurement and design will take place throughout early 2014, with construction scheduled to begin in mid-2014. All facilities are expected to be in service by mid-2015.

"Our industry continues to evolve," said Lancaster. "As an organization, we need to understand how these technologies may affect our business now and in the future, as well as research the impacts to our distribution system and evaluate the overall costs to integrate both large- and small scale- solar installations."

Early commitment to renewable energy

These projects expand on Great River Energy's commitment to developing renewable energy sources for cooperative members. The utility is ahead of schedule in meeting Minnesota's Renewable Energy Standard, and in 1999 was the first utility in the Upper Midwest to offer customers the ability to purchase wind energy through its Wellspring program.

Research and demonstration projects

Additionally, Great River Energy is working with the National Rural Electric Cooperative Association (NRECA) and Department of Energy (DOE) to analyze various business cases for distributed generation and solar installations. That work, which is funded by a joint DOE/NRECA grant and part of DOE's SunShot Initiative, will provide valuable information for cooperatives across the country.

"Great River Energy will be a valuable partner in our effort to make solar energy more affordable without compromising safety or reliability," said NRECA CEO Jo Ann Emerson. "Great River Energy is a technology leader among cooperatives, embracing innovation where it makes sense for co-op members."

Rebate program for 2014

Ground Source Heat Pumps (controlled or uncontrolled)

Residential	\$400/ton
Commercial	\$400/ton

Air Source Heat Pump

14.5 SEER	\$480
15 SEER	\$580
16 SEER or higher	\$630

Ductless Air Source Heat Pump..... \$300

Storage Space Heating..... \$ 40/kW

ECM Motor..... \$100

ENERGY STAR Dehumidifier..... \$ 25

Storage Water Heating*..... \$300

ENERGY STAR Refrigerator with recycling of old unit..... \$ 75

ENERGY STAR Freezer with recycling of old unit..... \$ 75

*Marathon or equivalent energy rated heater that is being installed on the Storage Program.

There is a \$2,000 maximum rebate per member. Rebates are always on a first come, first serve basis so please turn your paperwork in promptly. Rebate forms are available for download from the Co-op's web site. Air source heat pump rebate form should be completed by the installing contractor.

Rebates for high efficiency heat pumps will continue to require installation by a "registered contractor" which has been designated as a quality installer and is listed on the hvaceducation.net web site. A list of all "registered contractors" in Minnesota is on our Cooperative web site at www.mcleodcoop.com. There will be no rebates on central air conditioners in 2014. The Cooperative encourages any member replacing their air conditioner to upgrade to an ENERGY STAR rated air source heat pump.

There will be no rebates in 2014 for refrigerator or freezer units without documented proof of recycling to receive rebate.





Bi-fold door installed to get taller truck into garage

The standard size for a bucket truck is taller than they were made 15 or 20 years ago. In recent years, the Cooperative has had some difficulty fitting any new trucks into the garage. By installing bi-fold garage doors, we have been able to accommodate for the height of the trucks.



In February, Schweiss Manufacturing installed one more bi-fold door to allow a bucket truck to have sufficient height clearance to get into the garage.

Survey drawing winner

Lowell and Colleen Litzau of Glencoe won the \$100 electric bill credit, drawn from the names of members who completed the Member Satisfaction Survey before March 14. We thank all of our members who completed a survey for sharing their valuable opinions with the Co-op.



Nina Grunzke is 2014 Washington D.C. Youth Tour winner

Nina Grunzke, a junior at Hutchinson High School, will be representing McLeod Cooperative Power in June on the 2014

Washington D.C. Youth Tour. Nina is the daughter of Todd and Rita Grunzke of Hutchinson. She competed with several other students who submitted entries in the youth tour competition.

Spend your July vacation with McLeod Co-op Power



Join us for the Coal Creek Tour July 28-30, 2014.

The Cooperative will be hosting a three-day tour via motor coach to central and western

North Dakota. Tour stops will include Coal Creek Generating Station and Falkirk Mine and a night in Bismarck. The second night will be spent in Medora, taking in the Medora Musical and eating at the Pitchfork Fondue.



Call to make your reservations today. Double occupancy is \$400 per person or single occupancy \$500. Cost includes two night's hotel, most meals, motor coach transportation, and tickets to the musical/pitchfork fondue. Call the Co-op at 1-800-494-6272 and ask for Katie.

Member catches great example of galloping power lines



"It was a COLD day and we are grateful that we weren't without power for long. I think too many people take for granted electricity and all that it takes to get it to us non-stop. Please do send our family's thanks on to all of your linemen. We appreciate it." – Shannon Mattson

Co-op member Shannon Mattson sent a wonderful thank you to the Co-op. They were out of power for a few hours during the February 21st blizzard; the one that kept many people stranded at home. Shannon captured a photo of one of the Co-op's line trucks fixing the line from Highway 212 on that very cold day. The photo shows a great example of power lines galloping.