

Inside this issue...



Coal Creek Tour
June 17 - 19

2



Ballots mailed
March 19

3

Director
candidate
profiles

8

Official publication of



www.mcleodcoop.com

Annual Meeting Highlights

You are invited to the 78th Annual Meeting of McLeod Cooperative Power on

Tuesday, April 9 at the Hutchinson Event Center. Doors open at 8:30 a.m. The business meeting will begin at 10:00 a.m. See meeting schedule on page 3.



This year's theme is "The Value of Electricity" and the grand prize will be a \$300 electric bill credit. Other attendance prizes and a lunch served for members will follow the close of the meeting. Booths featuring exede high speed internet, Heartland Security Services, Load Management programs, CAP X2020 and First Alert pendants will be available for you to visit.

**Mark your calendar for April 9.
See you there!**

Candidates vie for director seats

The Nominating Committee met January 31 and February 14 to select the final candidates for director elections in Districts 7, 8, and 9. The Nominating Committee is required to select two candidates to be on the ballot for each district. Additional candidates are only added to the ballot when a member presents a petition to the Cooperative that is signed by at least 20 members from their district. In District 7, Randy Hlavka is also on the ballot via Nomination by Petition. In District 7 the incumbent director Bill Polchow is not seeking re-election. The persons on the ballot for this year's election are:

District 7: Diane Dostal, Jonathan Lemke, and Randy Hlavka

District 8: Keith Peterson and Timothy A. Ulrich

District 9: Gerald Roepke and Larry Kassulker

See director profiles on page 8.

Help us collect donations for the McLeod County Emergency Food Shelf

The March 2013 Food Drive Challenge is underway and McLeod Co-op Power is a collection site. The Food Drive Challenge is designed to assist the McLeod Emergency Food Shelf with the efforts to feed the hungry in McLeod County. The Glencoe Area Chamber of Commerce, Hutchinson Area Chamber of Commerce, Lester Prairie Business Association, Winsted Chamber of Commerce, and Silver Lake Business Association are sponsoring this friendly challenge with the goal of raising more than 100,000 pounds of donations during the month of March.



donated over 100,000 pounds last year. This was an outstanding county effort! Donations collected during the month of March are matched by Minnesota Food Share Network, making this a critical time to restock the shelves at the local food shelf.

McLeod Co-op Power employees are donating non-perishable food items. We would really like to have you join in on our donation efforts. Please bring in any donations of canned goods, non-perishable food items, or checks payable to the McLeod County Emergency Food Shelf, to the McLeod Cooperative Power office on or before March 29th. We will take care of getting all donations turned in to the food shelf by the Food Drive Challenge deadline.

In total, McLeod County businesses and residents

Nominating Committee prepared slate of director candidates for 2013



Standing L to R: Larry Lunow, Stan Werner, Franklin Schoenke, and Curt Burns. Seated L to R: Alvin Knaak, Duane Dostal, Harry Nowak, and Ron Pulkrabek. Not pictured Karl Lamb.

Members of the Nominating Committee from Districts 7, 8, and 9 met on January 31 and February 14 to select candidates to run for director elections in their respective districts. Serving on this year's Nominating Committee were: District 7: Harry E. Nowak of Silver Lake, Ronald Pulkrabek of Glencoe, and Duane Dostal of Silver Lake. Duane Dostal resigned at the first meeting of the Nominating Committee

due to the fact that his wife was interested in being a candidate for the board. The remaining two committee members carried out the selection process for District 7. Committee members in District 8: Curt Burns of Stewart, Alvin Knaak of Stewart, and Karl Lamb of Hector. District 9: Franklin Schoenke of New Germany, Larry Lunow of Watertown, and Stan Werner of Young America.

McLeod Cooperative Power office will be closed on Good Friday, March 29

The Cooperative has a 24-hour payment drop box at the entry to the Glencoe office. Members may drop off electric payments any time. Payments will be processed the next business day.

In case of emergency or outage, members may call 1-800-927-5685 anytime 24 hours a day.



Coal Creek tour to include Medora Musical & Pitchfork Fondue in 2013

The Coal Creek Tour is scheduled for June 17-19, 2013. The Coal Creek Generation Station, Falkirk Coal Mine and the Medora Musical and Pitchfork fondue are again on the itinerary. Last year was the first time Medora was included in the tour and it was a very popular addition and seats filled up fast.

Cost will be \$400 per person double occupancy or \$500 per person single occupancy. If any members are interested, we are starting to take reservations. Call the Co-op at 1-800-494-6272 and ask for Katie.



BOARD OF DIRECTORS

District 1

Oria Brinkmeier, **Lester Prairie**

District 2

Dale Peters, Secretary-Treasurer

Brownton

District 3

Roger Karstens, **Hutchinson**

District 4

Doug Kirtz, Vice President

Hector

District 5

Allan Duesterhoeft, **Hutchinson**

District 6

Lester Ranzau

Glencoe

District 7

Bill Polchow, Asst. Secretary-Treasurer

Silver Lake

District 8

Keith Peterson, **Hector**

District 9

Gerald Roepke, President

New Germany

MCLEOD COOPERATIVE POWER NEWS

USPS 2220

Periodicals Postage Paid at Hutchinson, MN

POSTMASTER: Send address changes to

McLeod Cooperative Power News
P O Box 70, Glencoe, MN 55336-0070

The **McLeod Cooperative Power News** is published monthly for \$4.75 per year for members and \$8 per year for non-members by McLeod Cooperative Power Association
1231 Ford Ave. North, Glencoe, MN 55336-0070

General Manager: Kris Ingenthron
Editor: Sue Pawelk

The **McLeod Cooperative Power News** is the official member publication of **McLeod Coop Power Association**

and focuses on our members, programs and events. All member story ideas and comments are welcome. Send to Sue Pawelk at the address shown.

Office Hours:

Monday - Friday
7:45 a.m. - 4:30 p.m.

Phone: 320-864-3148

1-800-494-6272

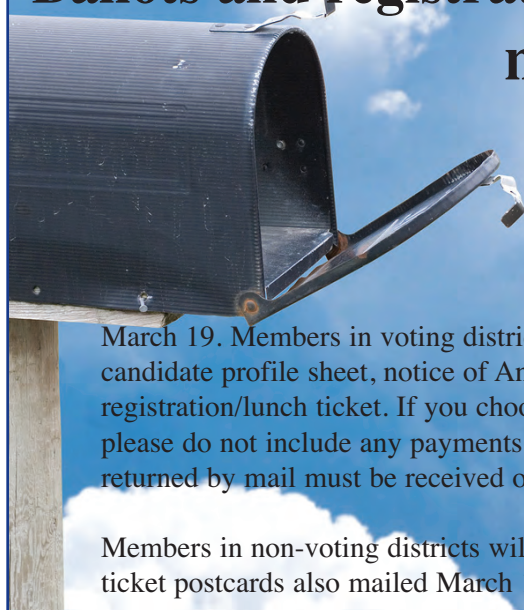
24-hour outage: 1-800-927-5685

Fax: 320-864-4850

Web site: www.mcleodcoop.com

Gopher State One Call 1-800-252-1166

Ballots and registration tickets to be mailed March 19



Members residing in Districts 7, 8 & 9 will receive a ballot for the director election in their district. They will be mailed on

March 19. Members in voting districts will also receive a director candidate profile sheet, notice of Annual Meeting, and a registration/lunch ticket. If you choose to return your ballot by mail please do not include any payments in your voting envelope. Ballots returned by mail must be received on or before April 8, 2013.

Members in non-voting districts will have their registration/lunch ticket postcards also mailed March 19.

Please follow instructions when completing your ballot.

If you reside in Districts 7,8, or 9 and receive a director election ballot, please follow the instructions on the ballot and envelopes.

After voting, seal your ballot in the small envelope. Then place it in the larger return envelope. Your name on a return address sticker will be in the upper left corner. Do not black out your name or your ballot cannot be counted. The Cooperative must track and record the

names of members who have returned ballots, making sure only one per voting member is received. So your name must be visible on the return address sticker.

Only the Nominating Committee is authorized to open the inside envelope containing the ballot. They open and count the ballots the day of the Annual Meeting.

Thank you for your cooperation.

Note

Please do not return payments or other correspondence in your ballot envelope.

Ballots may be returned by mail. They must be received by the close of business April 8 to be counted, or you can bring your ballot to the annual meeting April 9 before 10:00 a.m.

January Outage Summary

During January there were 32 outages reported on the Cooperative's system. Two outages at the end of the month accounted for 87% of the January outage hours.

A transmission line outage after 10:30 p.m. on January 31 caused 69% of our outage time during the month. It affected 2,866 consumers. Many members were off for less than a minute but about 500 members served by the Winthrop Substation were out approximately two hours.

Between 4 p.m. on January 30 and 9 p.m. on January 31, ice and sleet on lines caused them to start galloping, slapping together, causing blinks and eventually resulted in outages for 142 consumers. This was 18% of the

outage time for the month. Outages varied from one to three hours in length and affected consumers in Renville County and western Sibley County.

Most outages affect only one or two members. They are frequently caused by small animals, trees in the line, equipment failure, or motor vehicle/machinery accidents. Larger outages affecting hundreds of members at a time are usually caused by transmission outages, storms, equipment failure to substation equipment, or accidents.

Restoration time on weekend and evening outages, when line crews are called out from home, usually take a little longer to restore than outages when crews are already out working on the project.

McLeod Cooperative Power Association ANNUAL MEETING SCHEDULE Hutchinson Event Center — April 9, 2013

Registration Begins at Hutchinson Event Center	8:30 a.m.
Meeting Called to Order	10:00 a.m.
Invocation	Lester Ranzau, Director
Pledge of Allegiance	All
Welcome	Kris Ingenthron, General Manager
Establish a Quorum	Dale Peters, Sec./Treas.
Reading of Notice of Meeting	Dale Peters, Sec./Treas.
Approval of Minutes of 2012 Annual Meeting	Dale Peters, Sec./Treas.
Introduction of Director Candidates Districts 7, 8 & 9	Gerald Roepke, President
Introduction of Directors, District 1-6.....	Gerald Roepke, President
Financial Report.....	Jan Sanderson, Financial Services Manager
Closing of Ballots	Gerald Roepke, President
Guest Speaker	Gary Connett, Great River Energy
President's Report	Gerald Roepke, President
Manager's Report.....	Kris Ingenthron, General Manager
Washington D.C. Youth Tour Report	Ethan Ryberg
Announcement of Operation Round Up Recipients.....	Operation Round Up Trust Board
Introduction of Nominating Committee.....	Gerald Roepke, President
Election Report	Nominating Committee Chairman
Unfinished Business.....	Gerald Roepke, President
New Business.....	Gerald Roepke, President
Adjournment	
Table Prayer	Oria Brinkmeier, Director
Drawing for Attendance Prizes and Grand Prize (\$300 electric bill credit).....	Sue Pawelk
Lunch to follow meeting	Catered by Chef Craig

McLeod Cooperative Power Association, 1231 Ford Avenue, P.O. Box 70,
Glencoe, MN 55336-0070

New internet service is sure to Exede your expectations

The new Exede high-speed internet service offered by McLeod Co-op Power for nearly nine months has been exceeding our expectations. It has been exceeding the speed and performance standards with our customers also. The program advertises speeds up to 12 Mbps download and 3 Mbps upload. However, we

have found download speeds to significantly exceed 12 Mbps when testing new Exede installations.

This is many times faster than the WildBlue internet service we have offered for several years at 512 kb to 1.5 Mbps. Quite a few of the Co-op's WildBlue subscribers have switched to the Exede service

and have been very pleased with the faster performance.

Exede works especially well for our small business users and customers who telecommute from home. Exede delivers its broadband signal via a satellite dish that can be located on the side or roof of your home or on a post mounted in the ground.

exedeSM
by ViaSat

Speed	12 Mbps download 3 Mbps upload	12 Mbps download 3 Mbps upload	12 Mbps download 3 Mbps upload
Customer	Light Internet Users 10 GB/month	Moderate Internet Users 15 GB/month	Heavy Internet Users 25 GB/month
Price	\$49.99/month	79.99/month	129.99/month

All plans require 24 month commitment. One time set-up fee of \$49.00 and \$9.95/month protection plan. Speeds are "up to" and not guaranteed. Actual speed will vary.

Call the Cooperative to sign up for Exede service at 1-800-494-6272.

Historic church discovers the advantages of storage heat vs. standard boiler



The Swedlanda Evangelical Lutheran Church has graced a rural corner south of Hector since immigrants from Landa, Sweden built and dedicated it in the late 1800's.

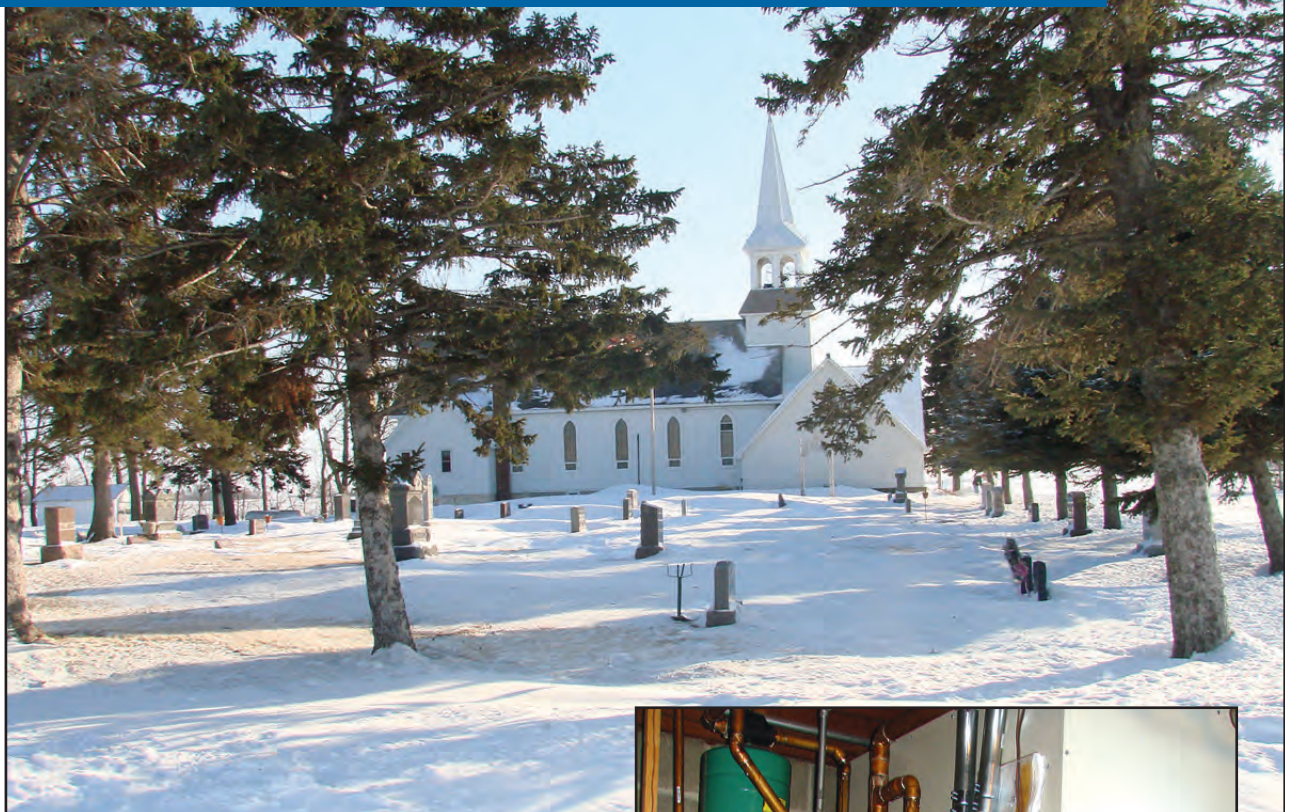
The sturdy church shows signs of having been updated about 60 years ago, but not much has changed since then. There's a timeless quality to the beautiful wood pews, stained glass windows, and tiled church basement where many a potluck and countless cups of egg coffee have been enjoyed.

Ever since piping and registers were added in 1949, the congregation has always been warmed with hot water heat supplied from liquid propane boilers. The last boilers were installed 20 years before and needed to be replaced.

"There were leaks in the heat exchanger and we could no longer get parts, said Jim Roebke of Hector. As Church Council President, Roebke was shouldered with the responsibility to make whatever updates were necessary to the heating system within budgetary guidelines.

"I priced out hot water boilers and thought we'd probably go that route," said Roebke. "The boilers would have cost about \$13,000. Then Shannon Jerabek from the Co-op said he thought we could qualify for low-interest loans and grants from the state's Center for Energy & Efficiency if we went with storage hydronic heat instead of a traditional boiler."

A storage heat hydronic furnace works similarly to an electric boiler. It uses electricity to heat water that circulates through the registers warming the air. The difference in a storage heat hydronic furnace is that the electricity doesn't directly heat the water. It heats specially-designed ceramic bricks inside the furnace and the heat from the bricks is transferred to the water which circulates through the registers.



One feature of the storage heat furnace is what made all the difference to Roebke; it heats up during the night, when electricity use is the lowest and therefore the cheapest. This feature is important to Swedlanda in two crucial ways that ended up saving considerable money for this small country church.

"By heating at night, we were able to get a nearly half-priced rate for electricity, which saved a lot of money per month," Roebke said. "Secondly, it qualified as an energy-efficient heating system with the CEE."

The CEE helps non-profit organizations to fund energy-efficient projects. What was attractive to the CEE in this project was the fact that the storage furnace used electricity at night. There is often an energy glut during the night when wind turbines run the most consistently. That energy is largely wasted because of the low energy demand and the unavailability of energy storage technology (such as large-scale batteries) that could store the energy for use during high-demand hours. The storage furnace actually uses that available wind-generated energy that would otherwise go to waste. Essentially, the furnace becomes the storage "battery."

"The cost of purchasing and installing the storage heat furnace was considerably more expensive at about \$25,000," Roebke said. "But with the no-interest loan we received from the CEE, along with a \$3,200 rebate from the Co-op and the low electric rate, the payback period will be about 10 years."

Had Roebke decided to go with a standard electric boiler, he could have saved money up-front, but the cost to operate the system could have been more than twice as high for the life of the boiler. The church would have had to pay the regular rate for electricity. The other option would have been to choose another L.P. boiler.



A storage furnace can usually fit well into an existing heating system, whether it's a forced-air or hydronic application.

"The price of LP is going up and we don't know where that will end," Roebke said. "With an L.P. boiler, you also have considerable maintenance. The Steffes furnace should really be trouble-free."



**Know what's below.
Call before you dig.**

Energy Tax Credits make a comeback

By Megan McKoy-Noe
NRECA

Ready to boost your home's energy efficiency without breaking the bank? The American Taxpayer Relief Act of 2012 revived energy efficiency tax credits to the tune of \$500. The credit offsets the cost of upgrades such as super-efficient water heaters and furnaces, boilers, heat pumps, central air conditioners, building insulation, windows, and roofs.

This marks the third extension of the incentive initiated by the federal Energy Policy Act of 2005. The last round expired in 2011; the new legislation covers 2012 upgrades along with projects undertaken in 2013. If you've already received an energy tax credit, you're out of luck—there's a lifetime cap of \$500.

Full details on qualifying upgrades and individual caps are at www.energystar.gov/taxcredits.

Here are a few ways to lower your electric bill and save at tax time.

Home's Envelope

Recoup up to 10 percent of the cost of upgrading a home's envelope. The tax credit is capped at \$500 for all improvements; labor costs are not covered.

Eligible upgrades are:

- Insulation materials
- Systems designed to reduce a home's heat loss/gain
- Exterior doors
- Skylights and windows (\$200 maximum for upgrades between 2006-2013)
- Qualifying metal or asphalt roofs

Heating and Cooling

Replacing your home's heating or cooling system? You could qualify for a tax credit ranging from \$50 to \$500 for units put in place between Jan. 1, 2012, and Dec. 31, 2013.

Eligible improvements are:

- High-efficiency water heaters (energy factor of at least 0.82 or thermal efficiency of at least 90 percent; (\$300 cap)
- Electric heat pump water heaters with an energy factor of at least 2.0 (\$300 cap)
- Advanced main air circulating fan (\$50 cap)
- Qualifying central air conditioner (\$300 cap)
- Biomass stove (select fuels; \$300 cap)

Tax Credit Basics

Energy tax credits are non-refundable—they can increase your refund by reducing the taxes you owe, dollar for dollar, and can be carried forward to reduce taxes in following years. You don't get a separate check for the credit amount.

File for energy tax credits with IRS Form 5695. Be sure to keep a Manufacturer Certification Statement (a signed statement from the manufacturer certifying that the product or component qualifies for the tax credit) for your records. Eligible upgrades must be made to a taxpayer's primary residence by Dec. 31, 2013.

Rebate Locator

Minnesota has a number of energy efficiency rebates and tax incentives. For specific information, you can go online to the Database of State Incentives for Renewables and Efficiency, a project funded by the U.S. Department of Energy, at www.dsireusa.org, and click on Minnesota. Your Cooperative also can help you out with rebates and incentives. Call for details. We'll be happy to work with you.

Megan McKoy-Noe writes on consumer and cooperative affairs for the National Rural Electric Cooperative Association

INDUSTRY

News

Dakota Spirit AgEnergy achieves EPA approval

Dakota Spirit AgEnergy achieved its renewable fuels certification (RFS2) this week through the U.S. Environmental Protection Agency for its proposed 65 million gallon per year biorefinery that will produce ethanol, distillers grains and fuel-grade corn oil at the Spiritwood Energy Park near Jamestown.

"We are pleased we could bring the EPA regulatory review of our unique RFS2 pathway to a successful and collaborative conclusion," said Greg Ridderbusch, president of Dakota Spirit AgEnergy, and vice president of business development and strategy, Great River Energy.

Under the EPA's revised Renewable Fuel Standard, cornstarch-based ethanol production facilities built after 2007 are required to have lifecycle carbon intensities 20 percent lower than conventional motor fuels. EPA's RFS2 approval this week affirms that Dakota Spirit AgEnergy meets the 20 percent threshold. The lower intensity is primarily due to the use of steam from Spiritwood Station to power the biorefinery.

Dakota Spirit AgEnergy, a wholly-owned subsidiary of Great River Energy, will be located adjacent to Great River Energy's Spiritwood Station near Jamestown and Spiritwood, ND. As a combined heat and power plant, and when fully utilized, Spiritwood Station will be about 66 percent energy efficient. Most conventional coal-based power plants are 30 to 35 percent efficient.

To date, Dakota Spirit AgEnergy has completed business planning, engineering and now, RFS2 certification. Ongoing financing work is left to complete before groundbreaking in summer 2013.

When operational, the biorefinery will utilize 23 million bushels of number 2 yellow corn to produce 65 million gallons of ethanol per year, as well as corn oil and distiller's grains. Future growth opportunities for the biorefinery are also being explored with emerging technologies such as cellulosic, isobutanol and other biofuel technologies.

The biorefinery will have a significant impact on the local economy through the creation 36 direct jobs. The project will also create approximately 275 trade and construction jobs during the 18-month construction period.

Great River Energy also owns Blue Flint Ethanol, a 65 MGY ethanol biorefinery that has been producing ethanol near Underwood, ND since 2007. Blue Flint Ethanol was the first co-located directly integrated biorefinery in the nation. Blue Flint is a combined heat and power design, purchasing steam from Coal Creek Station. Since it began producing ethanol, the plant evolved into a biorefinery with its production of corn oil and an E85 blending station. Blue Flint also serves premium markets by achieving low carbon designation for its ethanol. Blue Flint's proven successful operating approaches will be replicated at the new Dakota Spirit AgEnergy biorefinery.

~ Great River Energy

PROTECT WHAT MATTERS MOST FOR AS LOW AS \$95!*

Heartland Security

PROTECT YOUR HOME AGAINST:

Intrusion • Fire • Frozen Pipes Flooded Basements • Power Failure • Sump Pump Failure Carbon Monoxide • Medical Emergencies and more!

1-888-264-6380
WWW.HEARTLANDSS.COM

Meeker Cooperative
Light and Power Association

McLeod COOPERATIVE POWER

Twitter Facebook

*With a 3-year monitoring agreement. Not valid with other offers.

Cyber Security: Safeguarding Your Home Computer System

Source: <http://www.sxc.hu/>

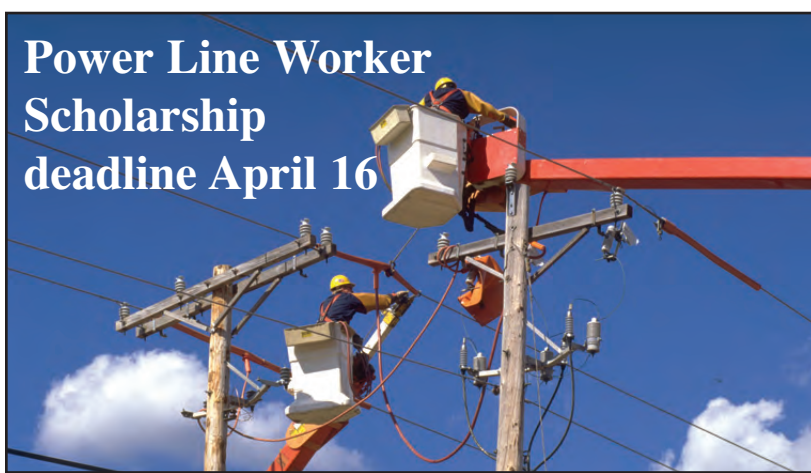
Computers and the Internet have become an essential part of daily life. Homeowners use computers for everything from communicating with friends and family, to shopping and paying bills. Unfortunately, this dependence on computers does not come without risk. Important records and personal information may be stored on your computer or someone else's. Potential threats include viruses that could erase your entire system or hackers stealing your credit card information. By combining some common sense rules with a little bit of technology, you can safeguard your computer system from unauthorized use.

1. Use strong passwords on your computers and home network. Choose passwords that are difficult or impossible to guess.
2. Make regular backup files of critical data. Backups must be made at least once each week.
3. Use virus protection software. Make sure that a reputable software program is installed on your computer and that the virus signatures are up to date. Also, make sure that all of the files on your computer are scanned periodically for viruses.
4. Restrict access to your computers with a firewall. Firewalls protect your computer from outside attackers on the Internet. Available as hardware or software, firewalls are particularly important when using DSL or cable connections, which are always on.



5. Do not keep computers online when not in use. Either shut them off or physically disconnect them from Internet connections.
6. Do not open e-mail attachments from strangers, regardless of how enticing the subject line or attachment may be. Be suspicious of any unusual e-mail attachment from someone you do know, it may have been sent from an infected machine without that person's knowledge.
7. Make sure that your computer, printers, and any other accessories are protected from power failures and surges. Invest in a good surge suppressor or uninterruptible power supply (UPS).

There is no 100% guarantee against the risk of an attack, but these simple precautions will go a long way toward ensuring that your system remains safe and secure. For more detailed information, see Home Network Security from the U.S. Department of Homeland Security.



Power Line Worker Scholarship deadline April 16

Students accepted into one of Minnesota's three power line technology programs for the 2013-14 school term may apply for a \$500 scholarship. The Cooperative will award one \$500 scholarship for a local student.

If you are graduating from a high school in McLeod, Renville, Sibley or Carver County or are a resident of one

of those four counties, and have been accepted into the line worker program at Minnesota West in Jackson, Minnesota State in Wadena or Rosemount Technical College in Rosemount, you are eligible to apply. Applications and informative career brochures are available by calling the Cooperative at 1-800-494-6272. Applications must be completed and returned by April 16, 2013.

Wind Energy Company ordered to stop turbine sales

A Hennepin County judge has ordered Excelsior-based Renewable Energy SD to stop selling wind turbines and to produce an accounting of its previous sales within 15 days. The order, issued February 20, stops Renewable Energy from continuing to sell its wind turbines while the lawsuit proceeded through the system.

In late January, Minnesota Attorney General Lori Swanson's office sued Renewable Energy and its founder, owner, and president, Shawn R. Dooling, alleging that they didn't keep their promises to Minnesota farmers who invested in the company's wind turbine energy systems or, more specifically, that they didn't deliver and maintain operational systems and failed to make good on promised sales and revenue projections.

According to Swanson's office, Renewable Energy marketed its wind turbine systems to farmers, promising that the systems would essentially pay for themselves through a combination of federal grants and a state electricity buy-back law. Farmers, in turn, paid at least \$119,000 for the systems. But the suit says that the company didn't deliver many of the windmills and in some instances erected turbines that didn't work properly.

The *Star Tribune* reported that Swanson's office has identified between 100 and 150 Renewable Energy customers and has indications that there might be more. This is up from the four parties identified in the initial suit. Any consumers who have entered into a contract with Renewable Energy SD and have not received the system they ordered, or have a system not operating up to promised specifications, should contact the Minnesota Attorney General's Office at 1-800-657-3787.

Renewable Energy SD marketed their products heavily throughout central Minnesota over the past several years, contacting many MCPA members. Some Cooperative members did enter into agreements with this company and to date have not received the operating system they paid to have installed.

Marathon
WATER HEATERS

- Tough exterior resists dents, scratches and rust.
- Free of ozone-depleting CFCs and HCFCs.
- No-leak warranty for as long as you own your home.
- 6-year warranty on thermostat and elements, including labor.



Employees recently recognized for years of service at MCPA, L to R: Patty Robb 15 years, Deb Goettl 15 years, Darrel Beste 25 years, and Greg Nistler 10 years.

McLeod Cooperative Power and Heartland Community Action Agency renew their partnership to provide energy savings to shared customers.

Through their Conservation Improvement Program (CIP), McLeod Cooperative Power contracted with Heartland Community Action Agency's Weatherization Assistance Program (WAP) to provide energy conservation services to shared customers.



Heartland Community Action Agency receives funds for 2013. Pictured are Sue Pawelk, McLeod Cooperative Power and Dave Jones and Bob Staples, Heartland Community Action Agency.

Weatherization Assistance Program services reduce home heating and cooling expenses through energy conservation education and energy saving activities such as attic, wall, floor, ceiling and foundation insulation, air infiltration reduction and bypass sealing, testing of mechanical systems to ensure efficiency and safety, and final inspection of the work done to ensure all work is performed correctly and satisfactorily.

Heartland's Housing Inspectors Bob Staples and Dave Jones, are MN State and BPI Certified Energy Auditors, and are certified/licensed in Lead Based Paint Risk Assessment and Asbestos Inspection.

Partnering with McLeod Cooperative Power allows WAP to consider other measures, such as replacing inefficient appliances.

Energy can be defined as "a measurable quantity of heat, work, or light". A BTU (British Thermal Unit) is the quantity of heat required to raise the temperature of one pound of water one degree Fahrenheit. A kWh (Kilowatt-hour) is a unit of electric energy equal to 3,412 BTUs. A kitchen match contains about 1 BTU of heat energy. **In 2012, McLeod Cooperative Power partially funded 8 projects resulting in a total energy savings of 113,111,468 BTUs. That is equivalent to the heat energy of 113,111,468 kitchen matches! THAT's a lot of matches (BTUs)!!!**

Nationally, for every \$1 invested in the program, WAP returns \$2.51 to households and society.

Over 10,000 local, American businesses are supported by the

activities of the Weatherization Assistance Program.

Most people spend at least half of every day inside their home. An unhealthy home is connected to poor health. The social costs of health hazards in homes range from the ripple effects of adverse health impacts to economic impacts and reduced quality of life. Residents of unhealthy homes are at risk for lead poisoning, injuries, respiratory diseases, electrical injuries, falls, rodent bites, and other illnesses and injuries. To help identify housing conditions, Heartland's Housing Inspectors also complete a "Healthy Home Assessment" in conjunction with the WAP audit.

To be income eligible for Weatherization Assistance Program services, a household must be income eligible for the Energy Assistance Program (EAP). To receive an application call Heartland Community Action Agency at 320-235-0850 or 1-800-992-1710. You can also visit Heartland's web site at <http://www.heartlandcaa.org/>

Are you interested in receiving a Home Energy Audit and Healthy Homes Assessment?

We need your input to help us develop a program to enable Heartland Community Action Agency to provide these services to everyone.

Please take a few minutes to complete the Energy and Healthy Homes Audit survey at <http://www.heartlandcaa.org/>

Limited rebates are on a first come first served basis this year

Rebates for load management, Energy Star appliances, and energy conservation grants will have limited funding for 2013. Rebates will be processed on a first-come, first-served basis and when we run out of funding for 2013, rebates will cease. So do not delay if you are planning on making a purchase of an energy-efficient heat pump, refrigerator or other eligible product and you are counting on a rebate. Make your purchase and turn in your rebate paperwork early in the year.

Most rebates remained at the same dollar amount as the 2012 rebates. Changes include:

- 1) water storage rebates increased to \$300;
- 2) rebates on central air conditioners will not be offered in 2013, however rebates for air source heat pumps will remain the same; and
- 3) rebates will be limited to a maximum rebate of \$2,000 per consumer.

If you have questions on rebates for 2013 call the Cooperative at 1-800-494-6272. Visit our website at www.mcleodcoop.com to download rebate forms for ground source heat pumps and appliances. Forms for air source heat pump installations are completed by your certified installer.

Changes to ENERGY STAR rebate program for 2013

Rebates for high-efficiency heat pumps will continue to require installation by a "registered contractor" which has been designated as a quality installer and is listed on the hvaceducation.net web site. A list of all "registered contractors" in Minnesota is on our Cooperative web site at www.mcleodcoop.com.

\$2000 maximum rebate per member. All 2013 rebates are on a first-come, first-served basis, while funds last. Refrigerator/freezer units will require recycling of the old unit to qualify for rebates.

2013 Rebates

Ground Source Heat Pumps (controlled or uncontrolled)

Residential	\$400/ton
Commercial	\$400/ton

Air Source Heat Pump

13 SEER	\$330
14 SEER	\$480
15 SEER	\$580
16 SEER or higher	\$630

Ductless Air Source Heat Pump

Storage Space Heating

ECM Motor

Uncontrolled electric water heater going on the Storage Water Heating with high efficiency water heater*

New construction or gas conversion to Storage Water Heating*

Peak shave to Storage Water Heating*

Heat pump water heater - new construction

Heat pump water heater replacing non-controlled electric

ENERGY STAR Refrigerator with recycling of old unit

ENERGY STAR Freezer with recycling of old unit

*(Marathon or equivalent energy rated heater)

Profiles of director candidates for District 7, 8 & 9

The Nominating Committee is required to select two names in each district to appear on the ballot. Below are the names they have selected for Districts 7, 8, and 9. The additional candidate in District 7 is Randy Hlavka, who filed a Nomination by Petition.

District 7 includes:

Hale, Rich Valley and Glencoe Townships in McLeod County and part of Stockholm Township in Wright County.



Diane Dostal

Diane is a graduate of Watertown High School. She worked for five years in Quality Control at Telex in Glencoe, and after that was

employed for 33 years as a Quality Specialist at 3M in Hutchinson. She retired from 3M in 2009.

Diane and her husband Duane have lived on their farm in Hale Township, north of Silver Lake, for 39 years. Duane has lived in the township his entire life. They have two grown children; Karla and Karmen. Duane is now retired from full-time farming. He and Diane have been Sales Managers in the Conklin Company since 1976. Diane also has been a Mary Kay consultant since 2003. They are long-time members of Our Savior's Lutheran Church in Hutchinson.

Diane enjoys reading books, cross-stitching, quilting, gardening (including canning, freezing, and pickling their produce), and working on her family tree.

Diane is running to learn more about MCPA. She said, "I will listen to both sides of an issue and work towards a worthy solution, to help make a change for the better." She would like to see the Cooperative keep its business locally based. She added, "I feel it would be beneficial to have representation for all male and female landowners. It is good to have variety and diversity on the board."

Diane would like to serve as a director because she believes an important issue facing the Cooperative is providing reliable service at the lowest possible cost and working to keep bills reasonable. She said, "I believe a small electric co-op must be very frugal in spending its resources and must keep abreast of conditions in a quickly changing industry".



Jonathan Lemke

Jon and his wife Mary have lived in Glencoe Township since 1990. Jon works at Lemke

Welding, their family business in Glencoe. Mary works as a Controller for Thomas H Moore Companies in Shakopee. They also hobby farm 400 acres, growing crops for Seneca and some cash crops. The Lemke's have three children; Christopher 16, Paul 13, and Jacqueline 8.

Jon is a graduate of Glencoe - Silver Lake High School and has a Bachelor's degree from Mankato State in science education.

Jon and his family are active members of First Evangelical Lutheran Church of Glencoe, having served on various Boards and committees. Jon's two youngest children attend First Lutheran and the oldest attends GSL High School. Jon enjoys spending a lot of quality time attending all of their events.

Jon believes the Co-op has done a good job managing human resources and its physical resources. "Through my welding business, I have worked in many power plants in the 5-state area, and have a broad knowledge in electric generation," Jon said. "I'd like to have the opportunity to expand my knowledge in this area by serving on the board. I could bring a different perspective to the board with the background that I have."



Randy Hlavka

Randy has been employed for 12 years as a Master A electrician in Maple Grove for UHL (The Uhl Company), a

computerized mechanical HVAC control contractor. Prior to that, Randy was a Master Electrician at HTI and a construction electrician. He attended Silver Lake High School, served in the US Navy for four and a half years, and then attended Dunwoody in the construction electrician program. Randy participates in continuing education classes for his job.

Randy grew up in Rich Valley Township. He and his wife, Jenny, live on his grandfather's farm nearby in Hale Township. Jenny has been employed at 3M for more than 20 years. They have three grown

children; Sara, Teri, and Eric and four grandchildren. Randy and Jenny participate in off-peak heating and water storage programs at their home.

The Hlavka's are members of Faith Presbyterian Church in Silver Lake, where Randy served as an elder for six years. He has been a member of the Silver Lake Legion for more than 20 years, serving as Commander for two years and has served on various committees. He is also a member of the Silver Lake Sportsmen's Club.

Randy said that serving on the MCPA board would be a learning experience for him. He added that his familiarity with electricity, distribution systems and energy savings would be a good knowledge base for serving on the board. Randy said, "The Co-op has been doing a good job. If elected, I would try to keep rates reasonable and make sure safety is a top priority for customers and employees."

District 8 includes:

Melville, Palmyra, Martinsburg, Bandon, Norfolk, Wellington and Bird Island Townships in Renville County, and Grafton, Moltke and Bismarck Townships in Sibley County.



Keith Peterson

Keith is the owner of E & K Farms, Inc. in Martinsburg Township, south of Hector. He is a graduate of Hector High School and the University of Minnesota

with a degree in agronomy and animal science. Keith is a grain farmer growing corn, soy beans and sweet corn.

Keith's wife Sandy is a nurse and they had five daughters and six grandchildren. Keith currently serves on the Swedlanda Lutheran Church board and is chairman of the Martinsburg Township board. He is an active member of the Hector Lions and formerly served on the Hector school board and the local elevator board. In his spare time, Keith enjoys hunting and doing things with his family.

Keith would like to continue to serve as your director and continue to keep electricity both economical and reliable, while keeping abreast of the ever-changing industry and its challenges.



Timothy A. Ulrich

Tim and his wife Donna, have lived on their farm in Grafton Township, south of Buffalo Lake, for 24 years. They have three grown children; Ben, Travis, and

Nicole. They also have two grandchildren. The Ulrichs enjoy camping, going to car shows in their muscle cars, and enjoying fun activities with their grandchildren.

Tim is a crop farmer, operating about 1,000 acres along with his son Ben. They grow corn and beans. He also is employed part-time for a local hog farmer.

He is a graduate of Buffalo Lake High School and Willmar Vocational Technical College, where he studied Agricultural Production.

Tim said he is interested in learning how the Co-op works and trying to make it better. He would like to maintain the good service and quick response they get from the Co-op.

District 9 includes:

Hollywood, Camden, Watertown and Young America Townships in Carver County and Woodland and Franklin Townships in Wright County.



Larry Kassulker

Larry has lived in Hollywood Township for his entire life. He and his wife Marilyn have three grown daughters; Shari, Laura, and Dawn. They also have four grandchildren.

Larry is employed as a machinist at Milltronics in Waconia. He has been building milling machines for them for 17 years and before that he was employed in similar work for VanDale Manufacturing. He also is a beef and cash crop farmer, raising corn, beans, wheat, and hay. He used to help part-time with feeding and milking cows when the family was active in dairy farming. Larry is a graduate of Watertown-Mayer High School.

When he is not at work, Larry is busy farming and machining/building his own projects. He is an elder at St. John's Lutheran Church in Hollywood, and is currently working on a building addition project for their congregation. He has served as a delegate to Lutheran High School in Mayer for the past 22 years.

The Kassulker's are participants in the Cooperative's dual fuel and cycled cooling off-peak programs. Larry has an interest in these programs and would like to see them expand. If elected as a director, he would be available to give good input to the board.



Gerald Roepke

Gerald Roepke is the incumbent candidate for District 9. He presently served as president of McLeod Co-op's Board of Directors.

Gerald and his wife Karen have been married for 49 years. They have four children and five grandchildren. Gerald has been in the plumbing and heating business for the past 46 years. The Roepke's are active members of St. Mark's Lutheran Church in New Germany.

He serves as Region 7C Baseball Commissioner for Minnesota State Amateur Baseball and serves as President of the Minnesota State Baseball Hall of Fame.

Gerald said, "I like to work for people and I'm very interested in the rural electric industry, so I would like to continue serving as a director. We must keep an open mind with the many issues that are facing us today in the electric industry and we must continue to provide good, reliable service to our customers at the lowest possible price."