

Inside this issue...



What is the cheapest way to cut down trees?

2



Right light guide

6



Operation Round Up recipients announced

7

Official publication of



www.mcleodcoop.com

Members gathered for 77th Annual Meeting



Re-elected directors are (left to right) Allan Dueterhoeft of Hutchinson, Doug Kirtz of Hector, and Lester Ranzau of Glencoe.



Members register at the annual meeting during the 4 p.m. rush.

The members of McLeod Cooperative Power Association gathered for the 77th annual meeting of the Cooperative on Tuesday, April 10, 2012 at the Hutchinson Event Center. About 325 members and guests attended the meeting and 650 were served a beef sandwich dinner.

Three incumbent directors were re-elected for a three-year term each: Doug Kirtz of Hector, Allan Dueterhoeft of Hutchinson, and Lester Ranzau of Glencoe were elected to serve Districts, 4, 5, and 6, respectively.

Financial Services Manager Jan Sanderson updated the members on the Co-op's finances. Board President Gerald Roepke recapped events of 2011 and safety at the Co-op, and addressed net metering legislation. General Manager Kris Ingenthron spoke on the benefits and uniqueness of cooperatives. Lester Ranzau showed a video on Great River Energy's refuse derived fuel plant and reported on GRE activities. Mandy Schlauderaff of GSL High School spoke about her 2011 Washington D.C. Youth Tour trip. Liz Schwarze announced the Operation Round Up® winners.

Attendance prizes were also awarded. The grand prize was a \$300 electric bill credit. It was won by Marcel Mathison of Hector.



Grand prize winner Marcel Mathison of Hector receives his \$300 MCPA gift certificate from Customer Service Manager Sue Pawelk. Mathison can use his certificate for his electric bill or any equipment purchases at the Co-op.



Justin Wanous of Silver Lake was winner of one of the youth prize drawings. He is pictured with his brother Quentin.

Energy Management Specialist Justin Kohls answers a consumer's questions at the Load Management booth.



Allocation notices on April bill statement

The amount of capital credits allocated to each member for 2011 is shown on the electric bill mailed in mid-April. It is based on margins allocated. MCPA allocations may be refunded to the member at some time in the future when capital credits for 2011 are retired.

The amount shown is not available to be deducted from the bill at this time. It is merely a notice of allocation. For many years the notice of allocation was mailed separately but due to high postage costs we are now economizing and listing it on your bill statement.



2012 Co-op Member Survey

You can win a \$100 electric bill credit just by completing and mailing the survey. (see other side for details)

Thank you for completing surveys

Thank you to each member who took the time to complete and return a Member Satisfaction Survey. Your comments are greatly appreciated by our board of directors and staff. Results will be tabulated and a prize winner drawn from the returned entries after April 15.



What is the cheapest way to get trees cut down?

It is not always doing it yourself

A well-meaning member wants to drop a tree and cut it up. He may think that the cheapest way to get it done is to cut it down himself. However, if the tree falls across the nearby power line, suddenly the cost of the job increases significantly and the danger posed to all working near the tree increases. What looked like a good plan, turned into a member paying hundreds or thousands of dollars to have a line crew come out on a weekend, safely clear the scene, and rebuild the wires and/or poles that the tree took down.

There is a better plan. If the tree(s) you want to cut down or trim are near power lines or are close enough that they could land on a line, you could call the Co-op and make an appointment for our line crew to take down the wires, you drop the tree, and our crew comes back to put the line back up. If the work is scheduled and done between 7:00 AM and 3:00 PM on a regular work day there is no charge to you. The other safer alternative is to hire a professional tree crew that has the experience and the equipment to work around power lines and drop trees without getting into the lines.

It is important for everyone to remember the life-threatening danger of working near any downed power lines. Lines could be energized. If lines are down, stay away and call the power company.

Manager's Message —

by Kris Ingenthron, General Manager
McLeod Cooperative Power Association

Good Day Everyone

As I sit here at my desk, writing this article, it is a partly sunny day, 51 degrees, with a slight breeze. The robins are back, the grass is greening up, and the plants/flowers are beginning to come out of their winter hibernation. Not so exactly one month ago. We were in the midst of an ice/snow storm. The storm began late on February 27th and we started receiving outage calls in the early morning hours on the 28th. MCPA crews, along with two crews from Hutchinson

Utilities, were able to have power restored to all of our affected members by 9:00 p.m. on the 28th. All told, we experienced 79 outages, affecting 929 members throughout our entire service territory. Our Operations and Engineering personnel worked 12-18 hours straight getting the power restored. Most of these outages were caused by either tree limbs or entire trees coming in contact with our overhead lines, although we did experience five broken poles as well.



After a major storm of this nature, we hold a meeting to discuss what went right, what we could have done better, staffing needs, communications, etc. and implement the necessary changes to our restoral procedures. There are also a few things you as a member can do to help us during power outages;

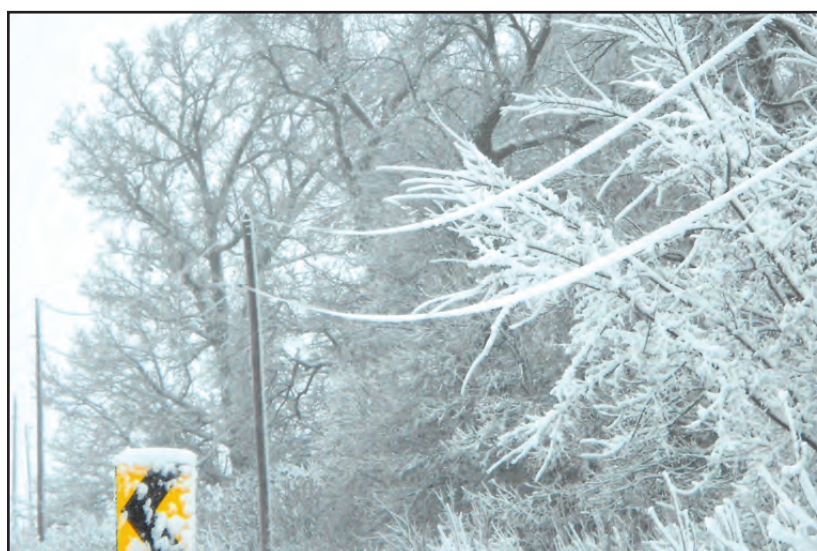
- Do not hesitate to call in and report your outage.
- Report any information you may have observed (broken pole, trees down, wires down, etc.)
- Stay away from any/all downed power lines.
- If you have been out of power for several hours, call back for an update.

We understand the inconvenience and implications of being without power for extended periods. I want to assure you that all of us at McLeod Cooperative power Association are doing our best to restore the power as quickly and safely as possible.

To close, I would like to extend a huge Thank You from all of us at MCPA for your patience during these storm-related outages and remember — “We are working together, working for you”.

Cooperatively yours,

Kris Ingenthron



BOARD OF DIRECTORS

District 1

Oria Brinkmeier, **Lester Prairie**

District 2

Dale Peters, Secretary-Treasurer
Brownton

District 3

Roger Karstens, **Hutchinson**

District 4

Doug Kirtz, Vice President

Hector

District 5

Allan Duesterhoeft, **Hutchinson**

District 6

Lester Ranzau

Glencoe

District 7

Bill Polchow, Asst. Secretary-Treasurer

Silver Lake

District 8

Keith Peterson, **Hector**

District 9

Gerald Roepke, President

New Germany

MCLEOD COOPERATIVE POWER NEWS

USPS 2220

Periodicals Postage Paid at Hutchinson, MN

POSTMASTER: Send address changes to

McLeod Cooperative Power News

P O Box 70, Glencoe, MN 55336-0070

The **McLeod Cooperative Power News** is published monthly for \$5 per year for members and \$8 per year for non-members by McLeod Cooperative Power Association
1231 Ford Ave. North, Glencoe, MN 55336-0070

General Manager: Kris Ingenthron
Editor: Sue Pawelk

The **McLeod Cooperative Power News** is the official member publication of **McLeod Coop Power Association**

and focuses on our members, programs and events.

All member story ideas and comments are welcome.

Send to Sue Pawelk at the address above.

Office Hours:

Monday - Friday
7:45 a.m. - 4:30 p.m.

Phone: 320-864-3148

1-800-494-6272

24-hour outage: 1-800-927-5685

Fax: 320-864-4850

Web site: www.mcleodcoop.com

Gopher State One Call 1-800-252-1166



School safety programs partner with Dairy Queen

MCPA is presenting electrical safety programs this April and May in area schools. The Cooperative promotes electric safety training to help educate youngsters on how to be safe when using electricity and to know how to avoid dangerous situations. Students who participate in the class will receive a voucher from Dairy Queen for a free treat. This is the second year Dairy Queen has partnered with Co-ops to promote electrical safety and efficiency.

Pole testing to be done north of Hector in May



If you live north of Hector, you may see MI-Tech Services, Inc. testing poles in the areas served by the Brookfield Substation. MI-Tech Services is based out of Wisconsin. They are scheduled to begin pole testing in May. If you see anyone working on our poles in your area, please look for the MI-Tech logo. Members may also feel free to call the Co-op to verify if we have any contractors working on Co-op equipment in your area. You members are our eyes and ears in the field. We appreciate you reporting anything suspicious going on near our facilities.

The average family of four saves \$35-\$40 a month

when they join the Hot Water Storage program



That is about a \$445 savings per year!

If your water heater is not on the Storage Program, give the Co-op a call at 1-800-494-6272. We will explain how you can start saving too!

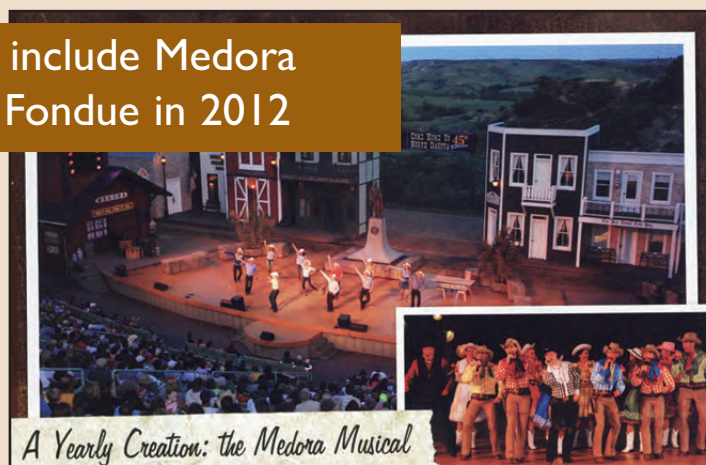
A \$200 rebate is available to members who have an uncontrolled electric water heater system and who switch to McLeod's money-saving Hot Water Storage Program!

Coal Creek Tour to include Medora Musical & Pitchfork Fondue in 2012

The Coal Creek Tour is scheduled for August 20-22, 2012. Coal Creek Generation Station, Falkirk Coal Mine and Garrison Dam are again on the itinerary, but

added to the tour this year is a trip to Medora. Participants will spend a night in Medora, take in the Medora Musical and eat at the Pitchfork Fondue experience.

Cost will be \$300 per person double occupancy or \$400 per person single occupancy. If any members are interested, we are starting to take reservations. Call the Co-op at 1-800-494-6272 and ask for Katie.



A Yearly Creation: the Medora Musical



The Best Steak in the West

The perfect Mother's or Father's Day gift



*Do you worry about...
your parents getting older?
mom or dad living alone?*

The First Alert emergency pendant from McLeod Co-op Power may be just the thing they need to help you worry less while they live on their own. One press of the button will call the 24-hour medical dispatch center, which will send a family member, neighbor or police over to help. The pendant allows them to work outside in the garden or go to the mailbox and still summon help if they need it. Emergency

pendants are reasonably priced and make a perfect Mother's Day or Father's Day gift.

Call McLeod Co-op Power at 1-800-494-MCPA for more information.



Arnold's of Glencoe illuminates energy efficiency

Arnold's Companies, with locations in Kimball, Willmar, Glencoe, St. Martin, Mankato and Alden, have sold agricultural, light construction and consumer products since 1945. The location in Glencoe recently worked with its Co-op to take advantage of a grant to install more energy efficient lighting.

"Peter Arnold, our general manager, wanted to see how much we could save by using more energy efficient lighting," said office administrator Heidi Salisbury.

The Glencoe store replaced all of its outside soffit lighting with LED canopy lights. Originally the lighting fixtures were fitted with 60-watt incandescent bulbs. They were replaced with LED lamps that use a mere 6 watts per lamp. The canopy lights are set to come on at dusk and turn off at dawn. They are in use about 4,400 hours per year. Switching from the incandescent bulbs to the LED lamps will save more than 2,800 kilowatt hours (kWhs), or about \$300 per year.

In addition, Arnold's built an addition to its warehouse and installed a total of 32 T-5 6-lamp fluorescent lights which use about 18 watts per lamp. The use of energy-efficient lighting qualified Arnold's for a lighting grant from its Cooperative.

Savings now and later

Besides the savings they enjoy from the lighting grant, they also save energy due to the small amount of electricity needed to run the energy-efficient lights. The cost of the entire project, minus the Cooperative's incentive, and the cost savings of the energy-efficient lighting,



Arnold's of Glencoe realized that the up-front cost of energy-efficient lighting will pay itself back in short order, particularly with a Co-op lighting grant.

results in a project payback of approximately 2-1/3 years. Arnold's will continue to reap the cost-saving benefits of the energy-efficient lighting for many, many years.

"Peter said that he doesn't enjoy having to change light bulbs," Heidi said. "The fact that the LED lights last up to 50,000 hours is a real benefit."

Any agricultural, retail or commercial business that is a member of McLeod Co-op Power or Meeker Cooperative Light & Power Assn. may qualify for a lighting grant when they install energy-efficient lighting. Call your Cooperative for details on lighting and other commercial incentives available.



Arnold's added 32 T-5 fluorescent 6-lamp fixtures to its warehouse addition. These energy-efficient lights only use 18 watts per lamp versus 75-watt incandescents.

The LED canopy lights installed on the front of the building (see above and right) will save Arnold's about \$300 per year in electricity costs, plus LEDs can last up to 50,000 hours.



ALWAYS CALL BEFORE YOU DIG

One free, easy call gets your utility lines marked AND helps protect you from injury and expense.

Safe Digging Is No Accident: Always Call 811 Before You Dig

Know what's below. Always call 811 before you dig. Visit call811.com for more information.

Heartland Security

YOU CAN'T PUT A PRICE ON PROTECTING YOUR FAMILY

Special Offer!
Sign up for a monitored system by May 31st 2012 and receive \$100 off!
(Offer not valid with other specials.)

Heartland systems fitted with special sensors can help detect smoke, water and temperature changes within your home. Heartland systems automatically notify the authorities in the event of an emergency and can be customized to fit a multitude of applications, including livestock, surveillance, medical, business and more.

The Power To Protect

Meeker Cooperative
Light and Power Association

McLeod COOPERATIVE POWER

www.heartlandss.com 888.264.6380

Energy Education in the Classroom

Teacher training course opportunity



If you are a K-12 teacher, this is an excellent opportunity. Great River Energy and its 28 member cooperatives once again bring you Energy Education in the Classroom to help you easily build energy education into your curriculum. Taught by faculty for the University of Wisconsin — Stevens Point, this teacher training Program is part of the popular Wisconsin K-12 Energy Education Program (KEEP). Read teacher reviews at greatriverenergy.com/teachercomments.

Teachers pay only \$100*.

Great River Energy will provide \$438 scholarships to pay for the remaining course fee for up to 20 teachers. Benefits include:

- Earn one graduate credit
- Get information and tools, including your own 400-page KEEP Activity Guide — it's full of course outlines and adaptations
- Learn about your electricity bill and today's energy challenges
- Learn in one of Minnesota's most talked-about green buildings

***Teachers must live or teach in an area served by one of Great River Energy's 28 member cooperatives, OR teach in a school with students whose parents are served by a Great River Energy member cooperative.**

Aug. 7 and 8, 2012

**Great River Energy
12300 Elm Creek Blvd
Maple Grove, MN 55369
Register by July 24**

Limited to 20 teachers on a first-come basis.

For more information, visit uwsp.edu/keep, call 715-346-4818 or email energy@uwsp.edu. Or visit greatriverenergy.com/teachercourse

You may also contact your Cooperative to get more information or a registration form.

GREAT RIVER ENERGY®

A Touchstone Energy® Cooperative



greatriverenergy.com • mnbrighterideas.com



facebook.com/GREenergyeducation

In partnership with our 28 member cooperatives

Agralite Electric Cooperative • Arrowhead Electric Cooperative • BENCO Electric • Brown County Rural Electric Association • Connexus Energy • Cooperative Light & Power Association • Crow Wing Power • Dakota Electric Association • East Central Energy • Federated Rural Electric Association • Goodhue County Cooperative Electrical Association • Itasca-Mantrap Cooperative Electric Association • Kandiyohi Power Cooperative • Lake Country Power • Lake Region Electric Cooperative • McLeod Cooperative Power Association • Meeker Cooperative • Mille Lacs Energy Cooperative • Minnesota Valley Electric Cooperative • Nobles Cooperative Electric • North Itasca Electric Cooperative • Redwood Electric Cooperative • Runestone Electric Association • South Central Electric Association • Stearns Electric Association • Steele-Waseca Cooperative Electric • Todd-Wadena Electric Cooperative • Wright Hennepin Cooperative Electric Association

INDUSTRY

News

Unproven fears still persist despite report

In the 1992 Energy Policy Act, lawmakers instructed the U.S. Department of Energy and the National Institute of Environmental Health Sciences to lead a five-year investigation into the health effects of electric and magnetic fields, or EMFs. The results were compiled in a 500-plus-page report written at a nine-day meeting in Brooklyn Park, Minn., and released in 1998. It concluded — despite studies in the 1980s suggesting a link — that two decades of research showed only a “weak association” between EMF exposure and childhood leukemia, and no link between EMF exposure and adult cancers.

The institute's report was hardly the final word for transmission line opponents. Health fears regularly come up during power-line disputes, most recently with the CapX2020 project. “It's a hearty perennial,” says John Farley, a UNLV physics professor who has followed the controversy for decades. While worries about cell phone EMFs have received more attention in recent years, Farley said he still gets emails once every week or two from people asking whether it is safe to buy a home near a power transmission line. “I say I don't think it's a problem,” says Farley.

We're naturally exposed to between 300 and 500 milligauss from the Earth's magnetic field, says Farley. The precise amount depends on your proximity to the planet's magnetic poles. The magnetic field at ground level from a power line, by comparison, is usually only 1 or 2 milligauss. “The additional magnetic field from the power line is maybe 1 percent or less than the magnetic field you get from just standing around on Earth,” says Farley. “I just don't think it's an issue.” Meanwhile, an MRI exposes people to about 10 million milligauss magnetic field.

~Source: *Midwest Energy News*

Building owners compete to save power

The first competition to conserve energy in Twin Cities commercial buildings has saved enough electricity to power 1,100 homes, its sponsors said Thursday. Two companies won a “Kilowatt Cup” for their efforts — Carlson Real Estate for multiple buildings in the west metro area and Lawson Commons in downtown St. Paul. Other building owners and tenants also won awards.

At six office buildings, Carlson Real Estate replaced each fluorescent tube with a new one that draws 4 watts less electricity, said Jami Silus, senior property manager. Other changes included replacing parking-ramp light fixtures with energy-efficient fluorescents and installing motion-detection switches in stairwells — projects that over a few months paid for themselves in lower electric bills, Silus said.

In a major change at one tower, Silus said, the company switched to staggered start-up of electrical heating systems, reducing the building's peak power load and thereby reducing Xcel demand charges. Overall, the projects saved about 7 percent to 10 percent on electric bills, she said.

~Source: *Star Tribune*

exedesm Satellite High-Speed Internet from ViaSat

exede by ViaSat exceeds any expectations you have of satellite technology and speed! This new service, offered by your Cooperative, can even exceed the average DSL speed! If you long for a faster, more satisfying internet experience, this is what you've been waiting for!

exede offers three packages that all have 12 Mbps download speed and 3 Mbps upload speed! The only difference is the monthly usage amount. Call your Cooperative today for more information and/or to get your name on our installation schedule!

Indulge your need for speed with exede. Call today!

Meeker
Cooperative
Light and Power Association

320-693-3231
800-232-6257

McLeod
COOPERATIVE POWER

320-864-3148
800-494-6272



Baseload power's value revealed over decades

When determining the value of a power plant, it's important to consider the benefits it provides over the facility's entire life, which is often several decades.

In 2011, Great River Energy finished construction and commissioning of its first new baseload power plant in more than 30 years when Spiritwood Station was completed outside Jamestown, N.D. As the facility neared completion, it was determined that the best option for Great River Energy's members was to hold off running the plant.

The in-service date of the Spiritwood Station was delayed because of recessionary impacts — reduced demand and prices for electricity — and also to develop additional businesses to purchase steam from the plant. As a combined heat and power plant, it produces two valuable products: power for sale into the electricity market and process steam for nearby industrial operations. If there are more facilities to purchase steam, the economics of the plant improve.

Although it may seem unusual that a new power plant would sit idle, Great River Energy encountered a similar situation the last time it built a baseload generation resource more than 30 years ago — and that resource became perhaps the most reliable and valuable resource in Great River Energy's energy portfolio.

Increasing value over time

In the late 1970s, Great River Energy was nearing the completion of construction on its largest power plant, Coal Creek Station near Underwood, N.D. Great River Energy's members determined that there was long-term value in investing \$750 million in the power plant, as well as \$250 million in developing a coal mine and \$250 million in a direct-current, high-

voltage transmission line to deliver the power to Minnesota. Adjusted for inflation, the same investment in 2012 would cost \$2.3 billion.

Although the plant was designed to produce energy from two units, the cooperative decided to sell only the output from unit 1 starting in 1979. To help with rate relief, unit 2 of Coal Creek Station was operated as a non-commercial unit until 1981.

Both units operated at reduced output through the 1980s. As more electricity was needed, the plant's output increased until approximately 1990 when both units started running at full load — and have continued to do so almost nonstop ever since.

When Coal Creek Station was built, wholesale power rates nearly tripled. However, the ability to grow into the power plant kept rates relatively steady for the 30 years that followed.

Building for the long run

When it begins producing electricity, Spiritwood Station will serve as a demonstration of the newest technologies in power plant efficiency and environmental controls. The total cost of the plant exceeded \$400 million and is expected to result in an 8 percent rate increase. Great River Energy's rates will remain competitive with Spiritwood's costs included in them. And much like Coal Creek Station in the 1980s, Spiritwood Station's value to the cooperative members of Minnesota will increase over time.

"Baseload power plants are built for the long run," said Great River Energy Generation Vice President Rick Lancaster. "Like Coal Creek Station, Spiritwood Station is a highly efficient plant that will have a lifespan of more than 30 years and will be a necessary asset in Great River Energy's portfolio in the future."



Right Light Guide

for General Use Bulbs

Today there are more lighting choices than ever before!
This guide will illuminate the main differences between types of light bulbs, their brightness, and how to read new labels.

STEP 1 Choose a New Bulb





The main new light bulbs are LED, CFL, and halogen.

Which bulb you choose will depend on how much money you want to save, where you'll use the bulb, and other preferences.

The chart below shows the 10-year cost of the different types of bulbs, how many replacement bulbs are necessary over 10 years, and the pros and cons of each.

Hint: Buy Quality Bulbs

With so many new bulbs on the market, quality can vary. **Look for the ENERGY STAR label** when you're buying efficient bulbs to ensure the quality of the light produced by the bulb and make sure it will have a long life.

Bulb	10-Year Cost	Pros and Cons
 LED	\$40	+ Saves 85% in energy costs + Longest lasting bulb on the market (10+ years) + Dimmable from 10%-100% + Not sensitive to colder temperatures + Instant-on + Mercury Free - Greater upfront cost - 100W brightness equivalent pending
 CFL	\$43	+ Saves 75% in energy costs + Lasts 8 times as long as the incandescent + Comparable cost to the incandescent - Sensitive to colder temperatures - Lesser dimmable range of 20%-90% - Contains mercury-recycling required
 Halogen	\$110	+ Same color quality as incandescent + Mercury Free + Comparable cost to the incandescent + Saves 30% in energy costs - Short life span like the incandescent
 Incandescent	Bulb and Replacement: \$160 Energy: \$160	

10-Year Cost Assumptions: 60W incandescent and efficient equivalents; used 3 hours/day; \$0.1158 kWh; cost includes an estimate to value the time one would spend purchasing and replacing bulbs. Note: Non-residential energy rates are generally lower than residential.

STEP 2 Match the Old Bulb

You want your new bulb to shine the same as the old one.

Start by identifying the wattage (like 60W, 75W) of your old incandescent bulb, then convert to lumens.

Wattage (W) is the measure of the bulb's energy consumption, but it doesn't describe how bright a light is. Use the chart below to determine your old bulb's brightness in lumens.

Lumen is the measurement of brightness. Find a bulb that matches in lumens, not watts. For instance, you'll replace an old 60W bulb with one that emits 800 lumens, such as a 13-16W CFL.

Incandescent	Lumen	Halogen	CFLs	LEDs
40W	~450	29W	9-13W	4-5W
60W	~800	43W	13-16W	6-8W
75W	~1100	53W	17-23W	9-11W
100W	~1600	72W	23-30W	11-15W

If in doubt about your old bulb, most household applications use around 800-1100 lumens.

STEP 3 Find Your New Bulbs

Write down the bulbs you need and head to the store.

Brightness: Match the lumens on the *Lighting Facts* label with the lumens listed on your shopping list.

Note: The lumen output listed on packages may vary by up to 50-60 lumens, but the difference is insignificant and unnoticeable. For instance, 800 lumen and 860 lumen light bulbs will produce a similar brightness.

Lighting Facts	
Per Bulb	
Brightness	820 lumens
Estimated Yearly Energy Cost	\$7.49
Life in Years	1.4 yrs
Color Appearance	Warm
Energy Used	60 watts

Hint: Soft White or Warm

For residential general-use lighting, look for a soft white or warm bulb, which will most closely match the color of traditional incandescent bulbs.

MORE Rebates, Resources, and Real People

We encourage you to contact your electric utility to learn more about lighting support they offer.



Learn, ask questions, and recycle CFLs:
<http://Lighting.MnCERTs.org>
 CERTs: Helping Minnesota communities determine their clean energy future

Low or no interest on qualifying energy-efficiency upgrades available

Have you been planning energy-efficient upgrades in your home, but need help with financing?

McLeod Co-op Power may be able to help!

Our wholesale provider, Great River Energy, has partnered with the Center for Energy and Environment (CEE) to offer electric cooperative members low or zero percent interest loans for qualifying energy-efficient equipment upgrades. The goal of the program is to provide a simple, affordable financing opportunity for homeowners to increase the energy efficiency of their home.

What Equipment Qualifies?

The program features zero percent and 2.99 percent interest loans for up to \$7,500 and \$25,000, respectively, for the following energy-efficient equipment projects*:

- Ground source heat pumps that meet or exceed ENERGY STAR® Tier 1 energy efficiency requirements
- ENERGY STAR® qualified air-source heat pumps (including mini-split ductless).
- Electric thermal storage (ETS) space heating systems capable of providing up to 100 percent of the home's heating requirements by using stored heat produced from electricity during a nightly, off-peak period
- ENERGY STAR® qualified heat pump water heaters
- ETS water heating systems with an energy factor (EF) of 0.90 or greater and a storage capacity of at least 80 gallons
- System restrictions and additional qualifications apply. Please contact your Co-op member services department for the full details on the qualified improvements listed above.

Member Eligibility

- Dwelling must be a residential, one-unit, owner-occupied property (system restrictions and additional qualifications may apply)
- Member must be in good financial standing with McLeod Co-op Power
- Loans must be secured via a mortgage against the property not to exceed \$25,000 or up to 100 percent of the property value
- No family income limits apply

Simple Loan Process!

- Loan Documents:
 - Visit www.mnbrighterideas.com/ or
 - Call a dedicated toll-free number (855)-335-5835 and CEE will mail you an application.
- Return them by mail, fax or email to the address provided in the loan application package.
- Following approval of the loan, a check is mailed to the member, who then has 6 months after the loan closing to complete the installation.
- All loans are subject to random inspection to insure the work was completed.

Important Notes: CEE contracts with Community Reinvestment Fund (CRF) to service their loans. The loan is by CRF and is a contract between CRF and the co-op member. Members will receive statements directly from CRF. McLeod Co-op Power is not, in any way, responsible for any loan being denied, the execution of the loan, or the payments that are due to CRF.

The current loan terms and conditions stated, including interest rates, do not constitute a commitment to lend or an offer to enter into an agreement, and such an offer may only be made pursuant to Minnesota Statutes, Section 47.206(3) and (4). For more information, please visit www.mnbrighterideas.com or call (855)-335-5835.



Tune up your cooling unit and receive a \$25 credit

Announcing the 2012 air conditioning tune-up program.

Just schedule a tune-up of your central air conditioner or air source heat pump (unit must be at least 5 years old and in working condition to qualify) and when your licensed professional HVAC contractor performs the service work, have them complete the rebate coupon below. Send the completed rebate form to the Cooperative with a copy of the contractor's invoice. His tune up must include the items on the coupon. After the Co-op receives your documentation, we will credit your electric bill \$25 within 4-6 weeks.

Air Conditioner/Heat Pump Check List

Owner _____
 Acct. # _____
 Address _____
 Location # _____
 Phone # _____
 Company doing Tune-Up _____
 Technician's Name _____
 Company Phone # _____

CHECK LIST

Brand Name _____
 Model # _____
 Serial # _____
 Tons/BTU Rating _____ SEER Rating _____

- Clean Outdoor Unit
- Clean and Inspect "A" Coil
- Check Blower Belt
- Compressor Motor Amp Reading Check
- Compressor Amp Reading Check
- Blower & Oil
- Blower Motor Amp Reading Check
- Check Filter
- Check Refrigerant Level & Pressure
- Blow Out Drain Line
- Visual Inspection of Cooling System

Recommendations _____

Technician Signature _____
 Date _____

Loan Parameters

Equipment*	Total Loan Available	Term of Loan	Interest Rate
Ground Source Heat Pump	Up to \$25,000	Up to 120 Months (10 Years)	2.99 %
Air Source Heat Pump	Up to \$7,500	Up to 60 Months (5 years)	0.00%
ETS Water Heater.....	Up to \$7,500	Up to 60 Months (5 years)	0.00%
ETS Space Heater.....	Up to \$7,500	Up to 60 Months (5 years)	0.00%
Heat Pump Water Heater	Up to \$7,500	Up to 60 Months (5 years)	0.00%

Operation Round Up recipients announced for 2012

The Trust received 16 completed applications. The fund had \$3,500 to award to local non-profits. Projects receiving funding were:

- \$500** McLeod Alliance for Victims of Domestic Violence, Inc. for replacement of computer equipment.
- \$500** Fare For All — Hutchinson, Hector & Renville for purchase of an enclosed trailer.

- \$500** Friendship Ventures of Annandale for grants to help families with a member with developmental disabilities (from our area) attend residential summer camp.
- \$500** Equul Access, Inc of Hutchinson to support school collaboration projects for disabled youth that benefit from therapeutic riding.
- \$500** McLeod County Emergency Food Shelf of Glencoe to rebuild food supplies to meet the needs of families requesting emergency food donations.

- \$250** Crow River Arts of Hutchinson for visual arts exhibit.
- \$250** Heartland Headstart of Cosmos for purchase of tricycles and helmets to develop motor skills of preschoolers.
- \$250** Wee Friends Creative Preschool of Glencoe for the purchase of creative play items.
- \$250** Hutchinson Theatre Company to help fund four youth to attend Young Star Workshop.

Operation Round Up \$25 winners

The Operation Round Up Trust board awarded two \$25 electric bill credits to thank members who have faithfully participated in Operation Round Up. A random drawing was done to select the names of two of the 418 Operation Round Up participants from the past year. Our winners were **Kenneth Rodmyre of Hector and Larry and Kay Husfeldt of Brownton**. They will each have a \$25 credit applied to their electric account.

This is also an incentive to encourage more and more members to sign up for Operation Round Up. The few cents your bill is rounded up, when added to the change of other participating members, will help support worthwhile projects in our service area. Just fill out the Operation Round Up application coupon on this page and send it in with your bill. We will get your account set up to help local worthwhile charities.

Your Operation Round Up donation is tax deductible and the amount donated shows on your electric bill. Just use your last electric bill of the year as your year-to-date Operation Round Up tax receipt.

Members may begin donating to Operation Round Up® any time of the year



Members helping members and members helping their community = Operation Round Up

Yes, sign me up for Operation Round Up. I understand that my bills will be rounded up to the next dollar amount and the proceeds will be used for local charitable programs.

Name: _____

Address: _____

City: _____ Zip Code: _____

Account #: _____

Signature: _____

The few cents that our members give by rounding up their electric bill can multiply to dollars for local charities that build up our whole community. It is easy to sign up, painless to participate in, and a great opportunity for your small donations to make a big difference.

Members who sign up for Operation Round Up will have their monthly electric bill rounded up to the nearest dollar. The difference between the billing amount and the nearest dollar goes to the Operation Round Up Trust. Members on the program donate from -0- to \$.99 a month, depending on the amount of their electric bill. The average member donates \$6.00 a year to the program. Many worthwhile charities benefit from the proceeds of the trust each year. If you do not already participate, please fill out the form and return it to the Co-op. We will get you set up as an Operation Round Up participant.

ANOTHER BRIGHT IDEA FROM YOUR ELECTRIC COOPERATIVE

Coupons can be redeemed at any store that carries GE bulbs

BE AN ENERGENIUS

Having the power of efficient home lighting means having the power to save on your bottom line.

\$3 Off GE Energy Smart® CFLs
April 1 - June 30, 2012

Due to the presence of mercury, CFLs must be recycled. In Minnesota, it is illegal to place them directly in the garbage.

Enter for a chance to win a \$500 energy credit



MANUFACTURERS COUPON • EXPIRES JUNE 30, 2012

SAVE \$3.00

on any GE Energy Smart® compact fluorescent lighting product

VOID

Consumer: Coupon valid on your purchase of any GE Energy Smart® compact fluorescent lighting product. You pay sales tax. Coupon may not be reproduced or combined with another offer and is non-transferable. Void if transferred, exchanged, sold or reproduced. Offer limited to one purchase in U.S.A., its territories and military exchanges.

Retailer: GE will reimburse you the face value plus 8¢ handling provided you have accepted this coupon in accordance with GE's Coupon Redemption Policy. Void where prohibited. Cash value 1/100 of 1¢. For copy of policy and/or coupon redemption mail to: GE Lighting Products, P.O. Box 889650, El Paso, TX 88588-0650.

Coupon expires: June 30, 2012 D204023 48248

0043168-048248

