



77th ANNUAL
MEETING
1935-2012

We will deliver energy and other services in the most friendly, safe, reliable and competitive manner possible.

77th ANNUAL
MEETING
1935-2012



77th ANNUAL
MEETING
1935-2012

We will deliver energy and other services in the most friendly, safe, reliable and competitive manner possible.

Board of Director Candidates

▶ District 4:

Doug Kirtz

Doug Breitreutz

▶ District 5:

Allan Duesterhoeft

Edward C. Markgraf

▶ District 6:

Lester Ranzau

Wayne Grams

MCPA Board of Directors

- ▶ District 1 – Oria Brinkmeier
- ▶ District 2 – Dale E. Peters
- ▶ District 3 – Roger Karstens
- ▶ District 7 – William Polchow
- ▶ District 8 – Keith Peterson
- ▶ District 9 – Gerald Roepke



77th ANNUAL
MEETING
1935-2012

We will deliver energy and other services in the most friendly, safe, reliable and competitive manner possible.



Jan Sanderson Financial Report

We will deliver energy and other services in the most friendly, safe, reliable and competitive manner possible.

Kilowatt Hours Sold

▶ 2011 kWh Sales	168,755,843
▶ 2010 kWh Sales	173,692,386
▶ Change	-4,936,543
▶ Percent change	-2.84%

2011 Electric Operations

- ▶ Electric Revenue \$ 17,356,636
- ▶ Purchased Power -11,021,108
- (Over 65% of Oper. Expenses)

▶ Other Oper. Expenses - 5,749,501

Electric Margins \$ 586,027



2011 Margins

- ▶ Electric Oper. Margins \$ 586,027
 - ▶ Non-Operating Margins \$ 794,415
 - ▶ Total Margins \$ 1,380,442
-
- Adequate to meet mortgage requirements

Balance Sheet

Assets

▶ Net Utility Plant	\$32,657,876
▶ Other Investments	8,826,552
▶ Current Assets	5,972,592
▶ Deferred Charges	<u>146,487</u>
▶ Total Assets	\$47,603,507

Balance Sheet

Liabilities and Other Credits

▶ Margins / Equities	\$23,720,354
▶ Non-Current Liabilities	19,517,520
▶ Current Liabilities	4,315,508
▶ Deferred Credits	<u>50,125</u>
Total Liabil./Other Cr.	\$47,603,507

2011 Financial Summary

- ▶ Sales decreased
- ▶ Adequate margins
- ▶ Construction completed
- ▶ FEMA applied for
- ▶ Refunded capital credits



77th ANNUAL
MEETING
1935-2012

We will deliver energy and other services in the most friendly, safe, reliable and competitive manner possible.



Gerald Roepke
Board President

We will deliver energy and other services in the most friendly, safe, reliable and competitive manner possible.

July Storms



Net Metering Legislation



Net Metering Recommendations

- ▶ Net metering and distributed generation should be cost neutral for our members.
- ▶ The purpose of net metering needs to be clarified. The purpose is to allow the electric consumer to offset their individual loads and not become independent power producers.
- ▶ Payments for excess generation should be eliminated and replaced with rolled over credits that expire at the end of the year.
- ▶ Generation should be properly sized to consumer load.
- ▶ Net metered customers have the responsibility to pay for the services they use.
- ▶ A system-wide cap on net metered accounts based on overall system capacity needs to be established to maintain the reliability and affordability of the electric distribution system.

Inspections

*RESAP

*Federated insurance

*OSHA



Mission Statement

We will deliver energy and other services in the most friendly, safe, reliable, and competitive manner possible.





77th ANNUAL
MEETING
1935-2012

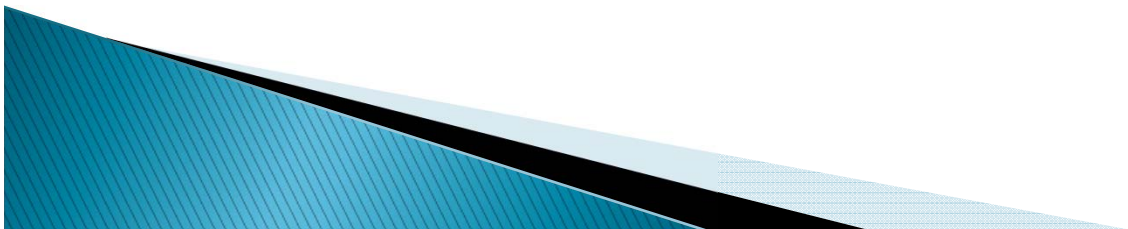
We will deliver energy and other services in the most friendly, safe, reliable and competitive manner possible.



Kris Ingenthron Manager's Report

We will deliver energy and other services in the most friendly, safe, reliable and competitive manner possible.

2012
International
Year of
Cooperatives

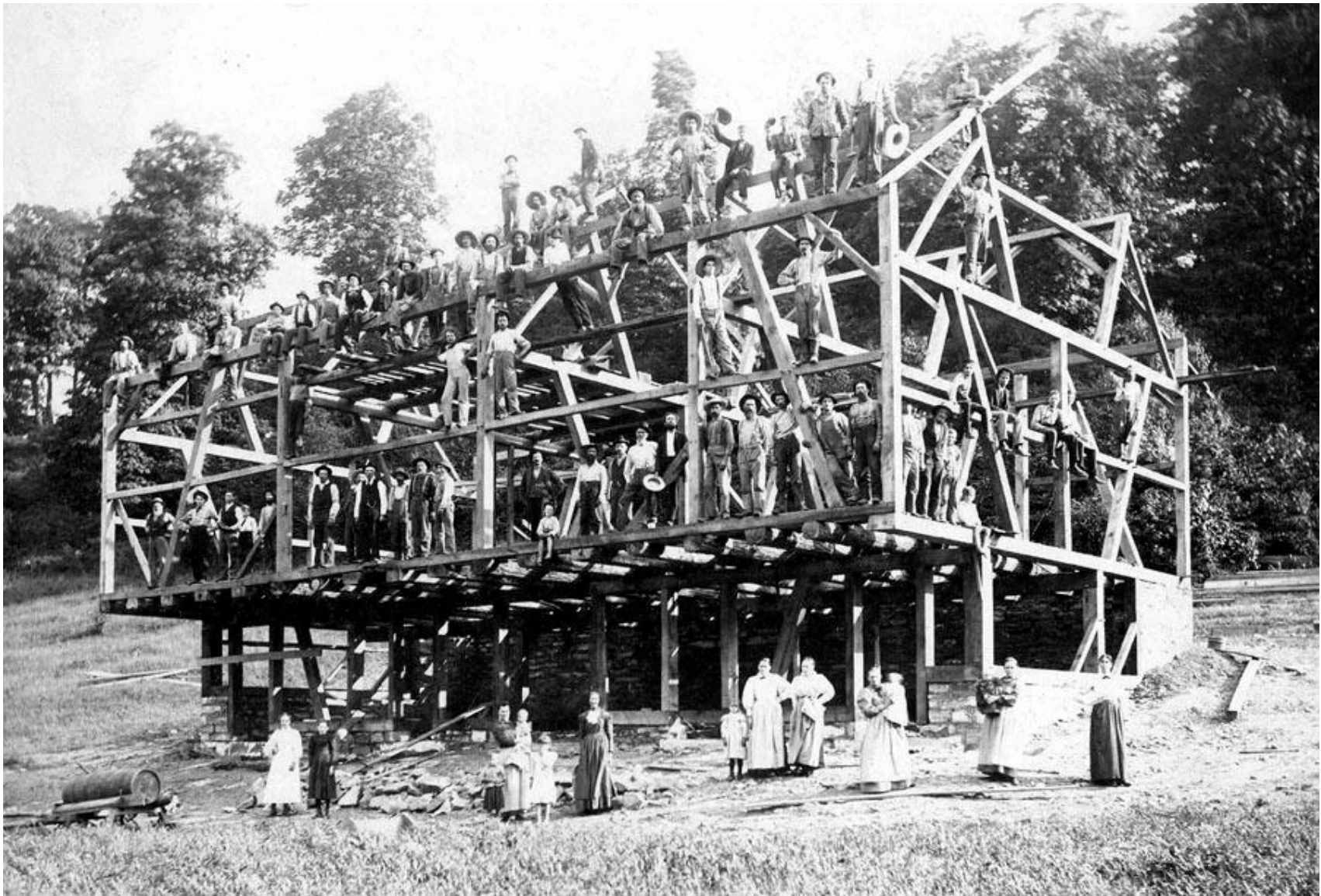


What is a Cooperative?

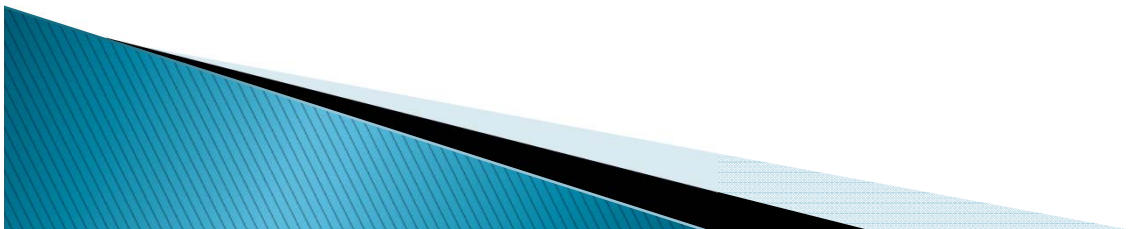
- ❖ *A cooperative is a business that is owned and controlled by the people who use and benefit from its services.*

United States

- ▶ *More than 120 million people are members of cooperatives*
- ▶ *About 40% of the U.S. population*
- ▶ *More than 29,000 U.S. cooperatives at 73,000 places of business*
- ▶ *More than \$3 trillion in assets and generate \$654 billion in revenue*
- ▶ *Provide 2 million jobs, with \$75 billion in wages and benefits.*



2012
International
Year of
Cooperatives



COOPERATIVE PRINCIPLES

- ▶ **1st Principle: Voluntary and Open Membership**
- ▶ 2nd Principle: Democratic Member Control
- ▶ **3rd Principle: Member Economic Participation**
- ▶ **4th Principle: Autonomy and Independence**
- ▶ **5th Principle: Education, Training, and Information**
- ▶ **6th Principle: Cooperation among Cooperatives**
- ▶ **7th Principle: Concern for Community**

- ▶ *A cooperative is organized by people to provide themselves with goods and services that they need.*
- ▶ *A cooperative operates for the benefit of its member-owners.*
- ▶ *The member-owners share equally in the control of the cooperative.*
- ▶ *The member-owners elect a board of directors from among themselves.*
- ▶ *These directors hire management to manage the day-to-day operations of the cooperative in a way that serves the members' interests.*
- ▶ *Members invest in shares in the business to provide capital for the cooperative.*
- ▶ *All net savings left after bills are paid and money is set aside for operations and improvements are returned to co-op members based on their patronage.*

2012

**International
Year of**

Cooperatives



Novation Credit Union



2012

**International
Year of**

Cooperatives



McLeod Cooperative Power Association



Hutchinson Ag Cooperative



Brownton Ag Cooperative



Some of America's best-known brands are produced by cooperatives



- *Land O'Lakes*
- *Ocean Spray*
- *Sunkist*
- *Welch's*
- *Sunsweet*
- *Sun-Maid*
- *Florida's Natural*
- *Riceland*
- *Blue Diamond*
- *Tree Top*
- *Sue Bee Honey*
- *Cabot Cheese*
- *Organic Valley*
- *Equal Exchange*
- *King Arthur Flour*

Glencoe Fleet Supply



Glencoe Cooperative Association



2012

International
Year of

Cooperatives



AgStar Financial Services



United Farmers Cooperative



Heartland Corn Products



***“WORKING TOGETHER,
WORKING FOR YOU”***



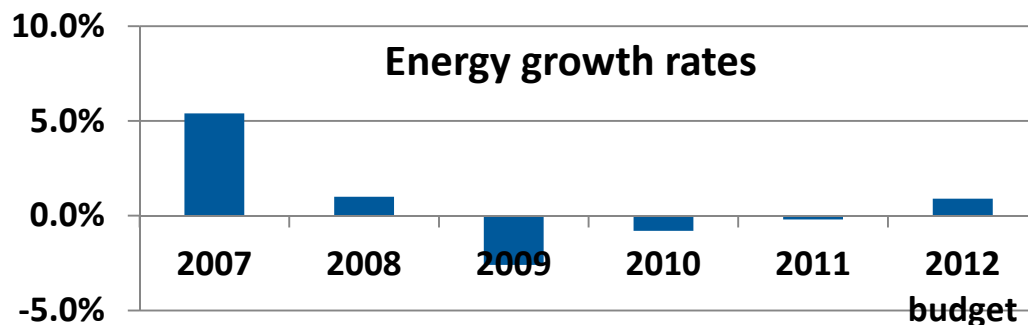
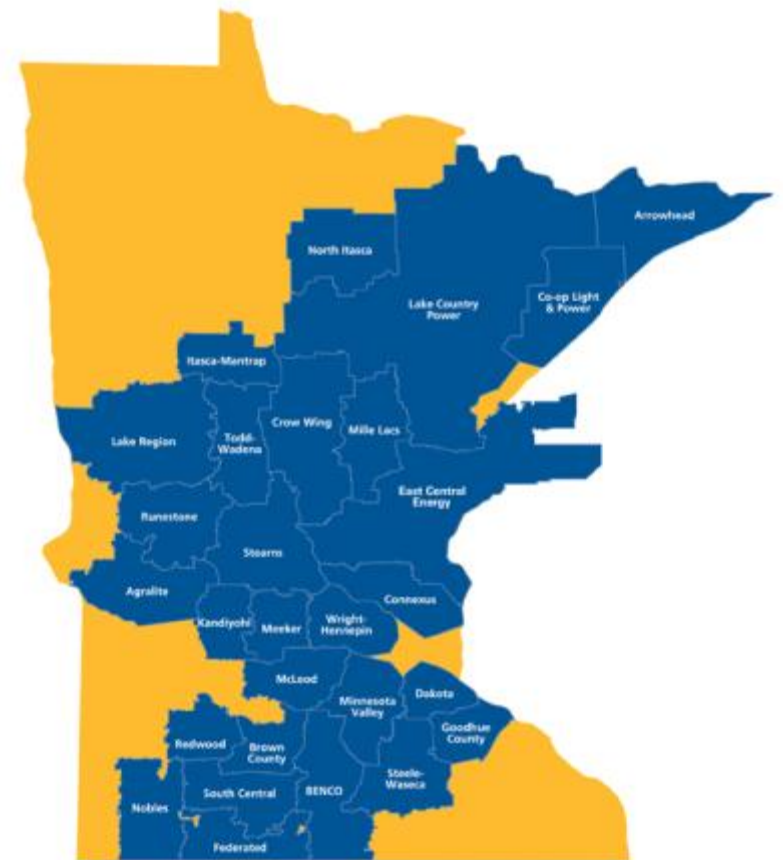


Lester Ranzau GRE Report

We will deliver energy and other services in the most friendly, safe, reliable and competitive manner possible.

Great River Energy

- 28 member cooperatives
- 4th largest G&T in the nation
 - \$3.6 billion total assets
 - \$2.8 billion total debt
 - \$902.3 million cost of service
- 860+ employees (MN and ND)
- 3,619 MW generation
 - 69% of energy from coal
 - 470 MW wind
- 4,500+ miles transmission lines



77th ANNUAL
MEETING
1935-2012

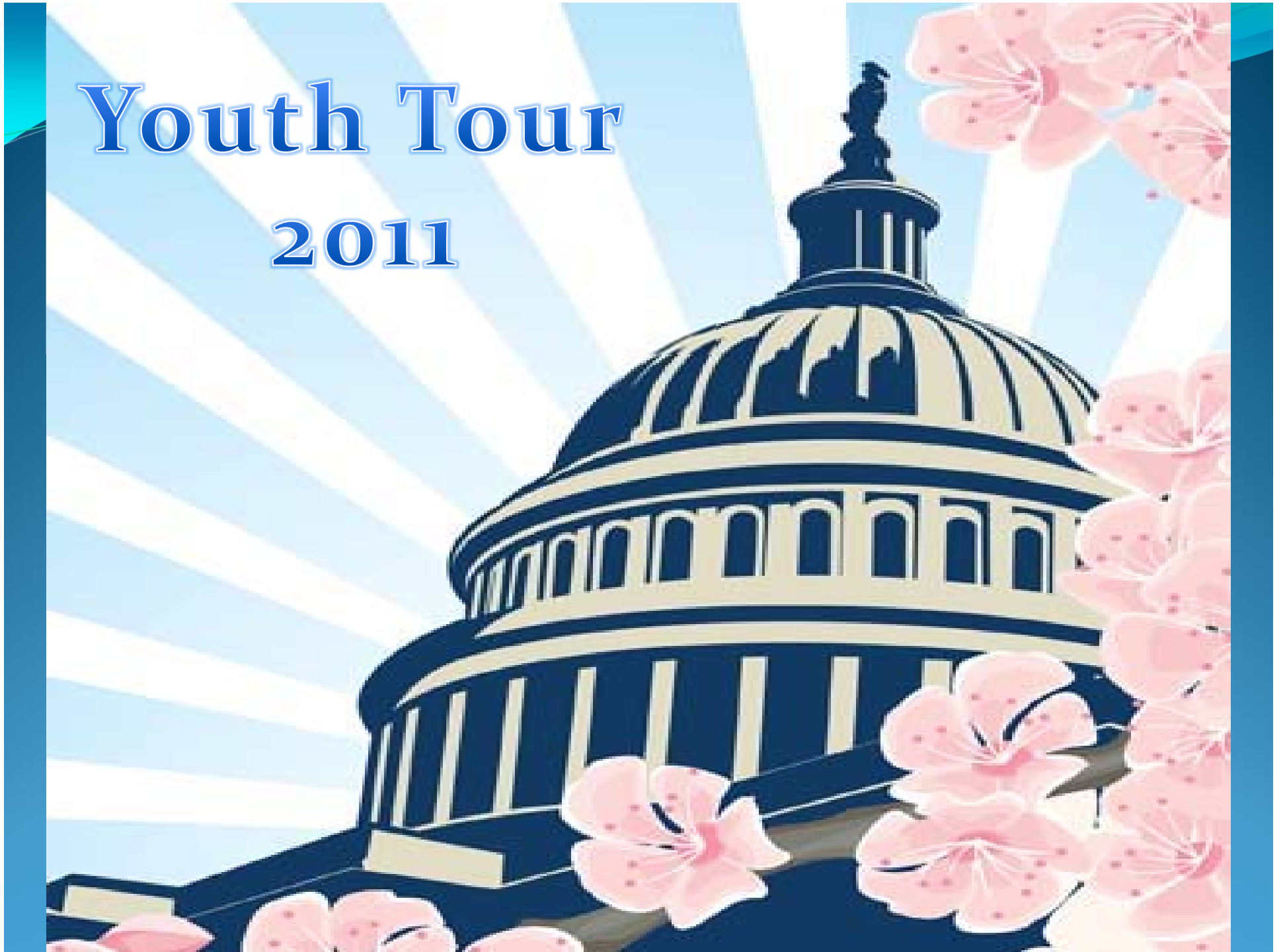


Mandy Schlauderaff Youth Tour report

We will deliver energy and other services in the most friendly, safe, reliable and competitive manner possible.

Youth Tour

2011



Saturday, June 11



FDR Memorial



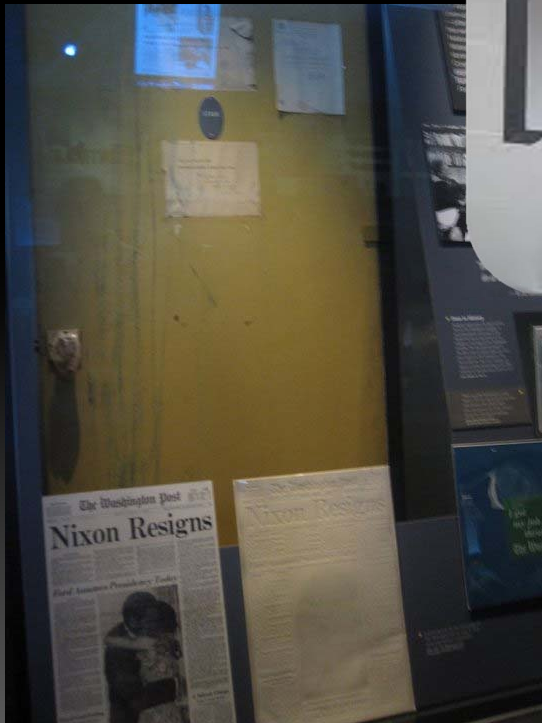
FRANKLIN DELANO ROOSEVELT
PRESIDENT OF THE UNITED STATES
1933 - 1945

Sunday, June 12



National
Cathedral







Monday, June 13



Mount Vernon



Tuesday, June 14



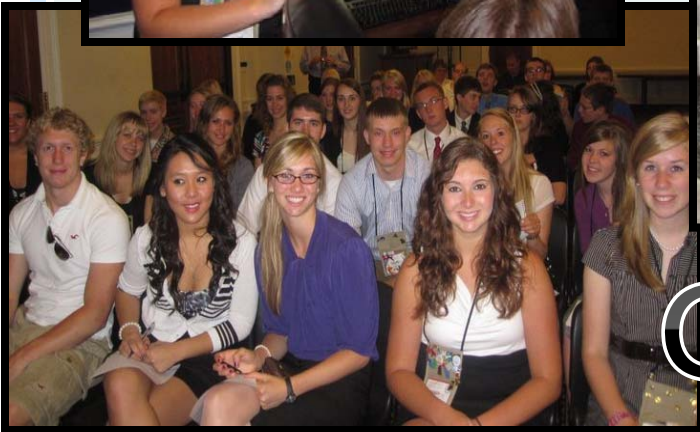
Smithsonian

Iwo Jima



**“If you can read this, thank
a teacher.
If you can read this in
English, thank a soldier.”**

Wednesday, June 15



Capitol Visits



Senator
Amy
Klobuchar

Senator
Al
Franken





WICKED

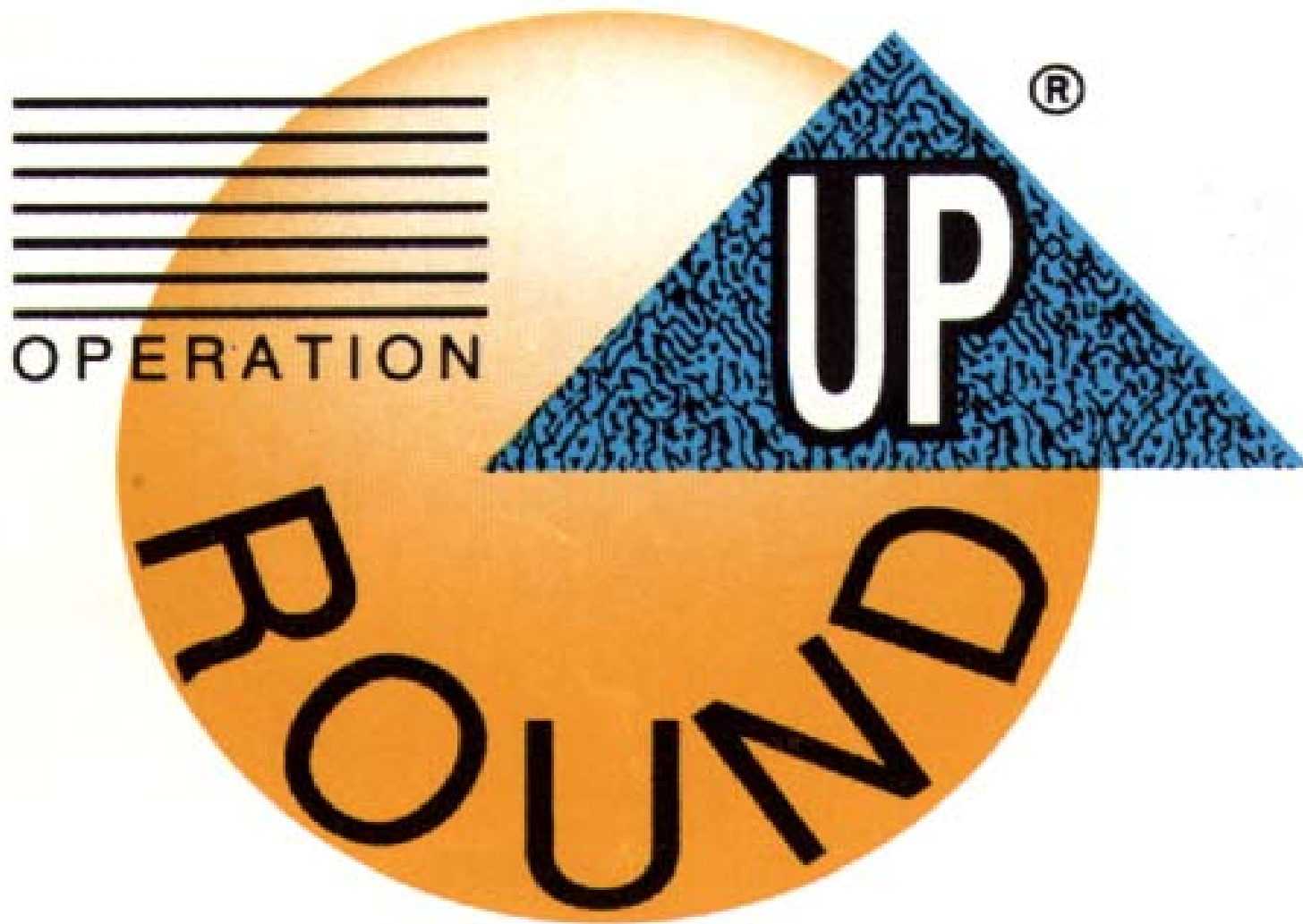
THE UNTOLD STORY OF THE WITCHES OF OZ





77th ANNUAL
MEETING
1935-2012

We will deliver energy and other services in the most friendly, safe, reliable and competitive manner possible.





77th ANNUAL
MEETING
1935-2012

We will deliver energy and other services in the most friendly, safe, reliable and competitive manner possible.

Nominating Committee

- ▶ District 4
Brad Edgar, Thomas Koeberl,
Reinhold Runke
- ▶ District 5
Wilbert Becker, LeRoy Karg, Morris
Rettman
- ▶ District 6
Gary Burdorf, Ronald Elbert, Bill
Rosenwald



77th ANNUAL
MEETING
1935-2012

