

# NEWS

October 2011

Inside this issue...



2 & 4



Do tankless water heaters live up to the hype

7



LED Christmas lights rebate program

8

## CapX2020 Brookings County-Hampton Look back/look forward

The CapX2020 projects were first proposed more than five years ago to increase electric reliability and access to new generation sources for Minnesota electric customers and cooperative members. Those five years have seen hundreds of public meetings, thousands of comments submitted to regulatory officials and, most recently, approval of Need and Route Permit applications. Up next: line construction.

Here's a brief look back and a look at what to expect in the coming years as the CapX2020 lines are built to serve our members needs.

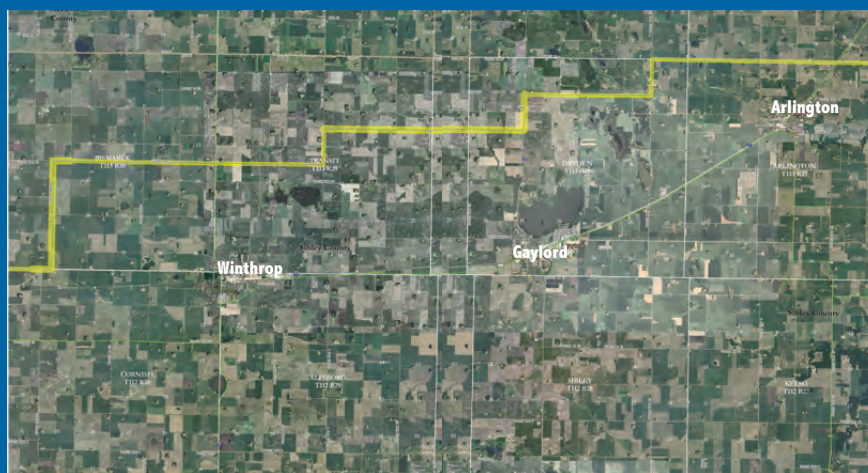
- **2006:** Notice Plan filed with the Minnesota Public Utilities Commission (MN PUC) explaining the areas utilities would evaluate for new transmission infrastructure and how they planned to work with landowners, local governments and other officials to explain the projects and include them in the process.
- **2007:** Certificate of Need filed detailing the need for the new transmission lines. Utilities held open houses to explain the project and discuss land use and routing issues with landowners.
- **2008:** MN PUC holds public and evidentiary hearings on Certificate of Need to take public comment on the project. Route Permit filed in Brookings County-Hampton project detailing two alternate routes to be reviewed by MN PUC.
- **2009:** MN PUC unanimously approves the need for the projects. Regulatory review continues in Brookings County-Hampton proceeding, including public scoping meetings for Environmental Impact Statement; public information meetings were held after the Draft Environmental Impact Statement was published; public and evidentiary hearings presided over by Administrative Law Judge Richard Luis.
- **2010:** MN PUC approved the majority of the Brookings County-Hampton Route Permit; the segment between the



Cedar Mountain substation in Renville County and Helena substation in Scott County was sent back to the Administrative Law Judge for additional study of potential impacts on birds along the Minnesota River. Routes through Sibley County, Le Sueur and Scott County continued to be among options under consideration by the MN PUC.

- **2011:** MN PUC approved the final segment of the Route Permit finalizing the remainder of the route. The MN PUC approved a Minnesota River crossing near Belle Plaine and a route through northern Sibley County, including Bismarck, Transit, Dryden and Arlington townships. Utilities prepare for construction and begin contacting landowners to purchase necessary easements. Landowners in Sibley County are among the first to be contacted as the segment through Scott, Sibley and Renville counties will be the first under construction.

The MN PUC approved a Minnesota River crossing near Belle Plaine and a route through northern Sibley County, including Bismarck, Transit, Dryden and Arlington townships.



- **2012:** Construction is scheduled to begin in the second quarter; easement acquisition will continue along the central portion of the project.
- **2013:** Construction will continue on substations and the central portion of the project; easement acquisition on the eastern and western segments will begin.
- **2014:** Construction will continue on all portions of the project.
- **2015:** Construction activities will be completed and the line energized.

Official publication of



www.mcleodcoop.com

## Scenic calendars available before Thanksgiving

McLeod Cooperative Power will again be providing a scenic Minnesota calendar for members on a first come, first serve basis. Color 2012 calendars will be available in the Co-op office around Thanksgiving.

**Going south for the winter?**



Please notify the Cooperative if you are heading south for the winter. Although the Turtle will send us your meter reading, we still need to know what payment arrangements you prefer.

Options are:

- You can pay in advance.
- Have the post office forward your mail.
- You can sign up for auto pay and have the payment automatically deducted from your checking or savings account.
- You can call us with a credit card payment.

Be sure to make arrangements before you leave by calling 1-800-494-6272.

## Electric Heating Sales Tax Exemption

Electricity sold for residential space heating, when used as the primary source of heat, is exempt from Minnesota sales tax for the usage months of November through April. To qualify, members must complete an exemption form, available from the Cooperative. If you have signed an exemption previously, you do not have to sign one again. We keep it on file. Heat on the load management rate is also eligible for the exemption but only the off-peak meter will not be taxed.

Call the office if you have any questions.

## The 7 Cooperative Principles

**1** Voluntary and Open Membership — Cooperatives are voluntary organizations, open to all persons able to use their services and willing to accept the responsibilities of membership, without gender, social, racial, political or religious discrimination.

**2** Democratic Member Control — Cooperatives are democratic organizations controlled by their members, who actively participate in setting policies and making decisions. The elected representatives are accountable to the membership. In primary cooperatives, members have equal voting rights (one member, one vote) and cooperatives at other levels are organized in a democratic manner.

**3** Members' Economic Participation — Members contribute equitably to, and democratically control, the capital of their cooperative. At least part of that capital is usually the common property of the cooperative. Members usually receive limited compensation, if any, on capital subscribed as a condition of membership. Members allocate surpluses for any or all of the following purposes: developing the cooperative, possibly by setting up reserves, part of which at least would be indivisible; benefiting members in proportion to their transactions with the cooperative; and supporting other activities approved by the membership.

All cooperative businesses adhere to seven guiding principles:

**4** Autonomy and Independence — Cooperatives are autonomous, self-help organizations controlled by their members. If they enter into agreements with other organizations, including governments, or raise capital from external sources, they do so on terms that ensure democratic control by their members and maintain their cooperative autonomy.

**5** Education, Training, and Information — Cooperatives provide education and training for their members, elected representatives, managers and employees so they can contribute effectively to the development of their cooperatives. They inform the general public, particularly young people and opinion leaders, about the nature and benefits of cooperation.

**6** Cooperation Among Cooperatives — Cooperatives serve their members most effectively and strengthen the cooperative movement by working together through local, national, regional and international structures.

**7** Concern for Community — While focusing on member needs, cooperatives work for the sustainable development of their communities through policies accepted by their members.

**UNITED STATES POSTAL SERVICE® (All Periodicals Publications Except Requester Publications)**

**Statement of Ownership, Management, and Circulation**

1. Publication Title: McLeod Cooperative Power News

2. Issue Date: 09-20-11

3. Issue Frequency: Monthly

4. Annual Subscription Price: \$5.00

5. Number of Issues Published Annually: 12

6. Annual Circulation: 5,295

7. Total Number of Copies (Net Press Run): 5,295

8. Paid or Requested Circulation: 5,295

9. Total Paid or Requested Circulation: 5,295

10. Total Paid or Requested Circulation: 5,295

11. Total Paid or Requested Circulation: 5,295

12. Total Paid or Requested Circulation: 5,295

13. Total Paid or Requested Circulation: 5,295

14. Total Paid or Requested Circulation: 5,295

15. Total Paid or Requested Circulation: 5,295

16. Total Paid or Requested Circulation: 5,295

17. Total Paid or Requested Circulation: 5,295

18. Total Paid or Requested Circulation: 5,295

19. Total Paid or Requested Circulation: 5,295

20. Total Paid or Requested Circulation: 5,295

21. Total Paid or Requested Circulation: 5,295

22. Total Paid or Requested Circulation: 5,295

23. Total Paid or Requested Circulation: 5,295

24. Total Paid or Requested Circulation: 5,295

25. Total Paid or Requested Circulation: 5,295

26. Total Paid or Requested Circulation: 5,295

27. Total Paid or Requested Circulation: 5,295

28. Total Paid or Requested Circulation: 5,295

29. Total Paid or Requested Circulation: 5,295

30. Total Paid or Requested Circulation: 5,295

31. Total Paid or Requested Circulation: 5,295

32. Total Paid or Requested Circulation: 5,295

33. Total Paid or Requested Circulation: 5,295

34. Total Paid or Requested Circulation: 5,295

35. Total Paid or Requested Circulation: 5,295

36. Total Paid or Requested Circulation: 5,295

37. Total Paid or Requested Circulation: 5,295

38. Total Paid or Requested Circulation: 5,295

39. Total Paid or Requested Circulation: 5,295

40. Total Paid or Requested Circulation: 5,295

41. Total Paid or Requested Circulation: 5,295

42. Total Paid or Requested Circulation: 5,295

43. Total Paid or Requested Circulation: 5,295

44. Total Paid or Requested Circulation: 5,295

45. Total Paid or Requested Circulation: 5,295

46. Total Paid or Requested Circulation: 5,295

47. Total Paid or Requested Circulation: 5,295

48. Total Paid or Requested Circulation: 5,295

49. Total Paid or Requested Circulation: 5,295

50. Total Paid or Requested Circulation: 5,295

51. Total Paid or Requested Circulation: 5,295

52. Total Paid or Requested Circulation: 5,295

53. Total Paid or Requested Circulation: 5,295

54. Total Paid or Requested Circulation: 5,295

55. Total Paid or Requested Circulation: 5,295

56. Total Paid or Requested Circulation: 5,295

57. Total Paid or Requested Circulation: 5,295

58. Total Paid or Requested Circulation: 5,295

59. Total Paid or Requested Circulation: 5,295

60. Total Paid or Requested Circulation: 5,295

61. Total Paid or Requested Circulation: 5,295

62. Total Paid or Requested Circulation: 5,295

63. Total Paid or Requested Circulation: 5,295

64. Total Paid or Requested Circulation: 5,295

65. Total Paid or Requested Circulation: 5,295

66. Total Paid or Requested Circulation: 5,295

67. Total Paid or Requested Circulation: 5,295

68. Total Paid or Requested Circulation: 5,295

69. Total Paid or Requested Circulation: 5,295

70. Total Paid or Requested Circulation: 5,295

71. Total Paid or Requested Circulation: 5,295

72. Total Paid or Requested Circulation: 5,295

73. Total Paid or Requested Circulation: 5,295

74. Total Paid or Requested Circulation: 5,295

75. Total Paid or Requested Circulation: 5,295

76. Total Paid or Requested Circulation: 5,295

77. Total Paid or Requested Circulation: 5,295

78. Total Paid or Requested Circulation: 5,295

79. Total Paid or Requested Circulation: 5,295

80. Total Paid or Requested Circulation: 5,295

81. Total Paid or Requested Circulation: 5,295

82. Total Paid or Requested Circulation: 5,295

83. Total Paid or Requested Circulation: 5,295

84. Total Paid or Requested Circulation: 5,295

85. Total Paid or Requested Circulation: 5,295

86. Total Paid or Requested Circulation: 5,295

87. Total Paid or Requested Circulation: 5,295

88. Total Paid or Requested Circulation: 5,295

89. Total Paid or Requested Circulation: 5,295

90. Total Paid or Requested Circulation: 5,295

91. Total Paid or Requested Circulation: 5,295

92. Total Paid or Requested Circulation: 5,295

93. Total Paid or Requested Circulation: 5,295

94. Total Paid or Requested Circulation: 5,295

95. Total Paid or Requested Circulation: 5,295

96. Total Paid or Requested Circulation: 5,295

97. Total Paid or Requested Circulation: 5,295

98. Total Paid or Requested Circulation: 5,295

99. Total Paid or Requested Circulation: 5,295

100. Total Paid or Requested Circulation: 5,295

19. Publication Title: McLeod Cooperative Power News

20. Issue Date: 09-20-11

21. Issue Frequency: Monthly

22. Annual Subscription Price: \$5.00

23. Number of Issues Published Annually: 12

24. Annual Circulation: 5,295

25. Total Number of Copies (Net Press Run): 5,295

26. Paid or Requested Circulation: 5,295

27. Total Paid or Requested Circulation: 5,295

28. Total Paid or Requested Circulation: 5,295

29. Total Paid or Requested Circulation: 5,295

30. Total Paid or Requested Circulation: 5,295

31. Total Paid or Requested Circulation: 5,295

32. Total Paid or Requested Circulation: 5,295

33. Total Paid or Requested Circulation: 5,295

34. Total Paid or Requested Circulation: 5,295

35. Total Paid or Requested Circulation: 5,295

36. Total Paid or Requested Circulation: 5,295

37. Total Paid or Requested Circulation: 5,295

38. Total Paid or Requested Circulation: 5,295

39. Total Paid or Requested Circulation: 5,295

40. Total Paid or Requested Circulation: 5,295

41. Total Paid or Requested Circulation: 5,295

42. Total Paid or Requested Circulation: 5,295

43. Total Paid or Requested Circulation: 5,295

44. Total Paid or Requested Circulation: 5,295

45. Total Paid or Requested Circulation: 5,295

46. Total Paid or Requested Circulation: 5,295

47. Total Paid or Requested Circulation: 5,295

48. Total Paid or Requested Circulation: 5,295

49. Total Paid or Requested Circulation: 5,295

50. Total Paid or Requested Circulation: 5,295

51. Total Paid or Requested Circulation: 5,295

52. Total Paid or Requested Circulation: 5,295

53. Total Paid or Requested Circulation: 5,295

54. Total Paid or Requested Circulation: 5,295

55. Total Paid or Requested Circulation: 5,295

56. Total Paid or Requested Circulation: 5,295

57. Total Paid or Requested Circulation: 5,295

58. Total Paid or Requested Circulation: 5,295

59. Total Paid or Requested Circulation: 5,295

60. Total Paid or Requested Circulation: 5,295

61. Total Paid or Requested Circulation: 5,295

62. Total Paid or Requested Circulation: 5,295

63. Total Paid or Requested Circulation: 5,295

64. Total Paid or Requested Circulation: 5,295

65. Total Paid or Requested Circulation: 5,295

66. Total Paid or Requested Circulation: 5,295

67. Total Paid or Requested Circulation: 5,295

68. Total Paid or Requested Circulation: 5,295

69. Total Paid or Requested Circulation: 5,295

70. Total Paid or Requested Circulation: 5,295

71. Total Paid or Requested Circulation: 5,295

72. Total Paid or Requested Circulation: 5,295

73. Total Paid or Requested Circulation: 5,295

74. Total Paid or Requested Circulation: 5,295

75. Total Paid or Requested Circulation: 5,295

76. Total Paid or Requested Circulation: 5,295

77. Total Paid or Requested Circulation: 5,295

78. Total Paid or Requested Circulation: 5,295

79. Total Paid or Requested Circulation: 5,295

80. Total Paid or Requested Circulation: 5,295

81. Total Paid or Requested Circulation: 5,295

82. Total Paid or Requested Circulation: 5,295

83. Total Paid or Requested Circulation: 5,295

84. Total Paid or Requested Circulation: 5,295

85. Total Paid or Requested Circulation: 5,295

86. Total Paid or Requested Circulation: 5,295

87. Total Paid or Requested Circulation: 5,295

88. Total Paid or Requested Circulation: 5,295

89. Total Paid or Requested Circulation: 5,295

90. Total Paid or Requested Circulation: 5,295

91. Total Paid or Requested Circulation: 5,295

92. Total Paid or Requested Circulation: 5,295

93. Total Paid or Requested Circulation: 5,295

94. Total Paid or Requested Circulation: 5,295

95. Total Paid or Requested Circulation: 5,295

96. Total Paid or Requested Circulation: 5,295

97. Total Paid or Requested Circulation: 5,295

98. Total Paid or Requested Circulation: 5,295

99. Total Paid or Requested Circulation: 5,295

100. Total Paid or Requested Circulation: 5,295

## BOARD OF DIRECTORS

### District 1

Oria Brinkmeier, *Lester Prairie*

### District 2

Dale Peters, Secretary-Treasurer  
*Brownston*

### District 3

Roger Karstens, *Hutchinson*

### District 4

Doug Kirtz, Vice President  
*Hector*

### District 5

Allan Dueterhoeft, *Hutchinson*

### District 6

Lester Ranzau  
*Glencoe*

### District 7

Bill Polchow, Asst. Secretary-Treasurer  
*Silver Lake*

### District 8

Keith Peterson, *Hector*

### District 9

Gerald Roepke, President  
*New Germany*

USPS 2220

Periodicals Postage Paid at Hutchinson, MN  
POSTMASTER: Send address changes to  
McLeod Cooperative Power News  
P O Box 70, Glencoe, MN 55336-0070

The *McLeod Cooperative Power News* is published monthly for \$5 per year for members and \$8 per year for non-members by McLeod Cooperative Power Association 1231 Ford Ave. North, Glencoe, MN 55336-0070

General Manager: Kris Ingenthron  
Editor: Sue Pawelk

The *McLeod Cooperative Power News* is the official member publication of McLeod Coop Power Association and focuses

## McLEOD COOPERATIVE POWER NEWS

on our members, programs and events.

All member story ideas and comments are welcome. Send to Sue Pawelk at the address above.

### Office Hours:

Monday - Friday  
7:45 a.m. - 4:30 p.m.

Phone: 320-864-3148

1-800-494-6272

24-hour outage: 1-800-927-5685

Fax: 320-864-4850

Web site: [www.mcleodcoop.com](http://www.mcleodcoop.com)

Gopher State One Call 1-800-252-1166



## Former director Edmund Ehrke passes away

**Edmund Ehrke, 79 , of Glencoe passed away September 21. Edmund had served faithfully on the MCPA Board of Directors from 1987-2005. He lived most of his life on the family farm north of Plato and represented the members of District 1. He is survived by his wife Glendora, children and grandchildren.**

## Outage Calls

### Why is my power out?

Power outages can happen many different ways but the most common is caused by thunderstorms which bring strong winds and lightning. Lightning can strike poles or equipment on the poles, and wind can blow branches down onto the power lines. Other things such as animals, extreme heat, and equipment failure can also be problematic causes of outages. And then there are the human caused outages when people hit poles, lines, or pad-mount transformers with vehicles or farm machinery.

### I'm the last one on the line, why do my neighbors have power and I don't?

There are several scenarios that could cause you to experience an outage, while your neighbors still have power. Here are a few:

- The accounts can be served by different feeders, substations, or taps. There are many occasions where a member and their neighbors are near the dividing point, often called a 'normal open point'. Everyone on one side of the 'normal open point' may experience an outage, while everyone on the other side still has power.
- The account experiencing an outage is fed down-line from a protective device. For example, if a tree gets into a line, the closest protective device is supposed to open and de-energize the line. It may happen that the member seeing the outage is the first account down-line from the device, while the neighbor is up-line from the device and still has power.

During and following an outage we occasionally receive these general questions from members. We thought other members might have the same questions, so we are sharing some answers.

- The member experiencing an outage could have a transformer fuse or other issue that would only affect them. This is a common scenario with animals, lightning strikes and trees.

### How long is the power going to be out?

Power outages can vary in size and length. In fact, the size of an outage usually is a good indicator on how long the outage will last. If we only have one outage to respond to, it is likely you will be back on quickly. If it is a substation feeder outage, although quite a few people are out, the line workers can get everyone back on by fixing one problem in one location so that also would probably not be a long outage. If a wind storm comes through and causes branches to come down on lines in a variety of locations, it will take much longer to get all of those individual problems repaired. It is difficult to predict how long it will take to get the lights back on, especially before we know what is the source of the problem and what will need to be done to fix it.

### Do I need to get a generator?

Every situation is different. Some members may need a generator more than others; it all depends upon the individual member's needs. Members who have livestock or medical needs might rely heavily on having power while others can go several hours without power. Most of the time outages are minor in length and with some precautionary measures can be handled very easily. To find tips on how you can prepare for a power outage visit [www.safeelectricity.org](http://www.safeelectricity.org).

### My neighbor has already called in the outage. Do I need to report it too?

We always want members to report an outage whether your neighbor has called in the outage or not. Every outage is important and your call gives us important information to determine the exact area of the outage and how widespread it might be.

### What is the best way to report an outage? Should I call my director to report an outage?

When the power goes out, please call the Co-op outage number: 1-800-927-5685 as soon as possible on your touch-tone phone. You can call this number 24 hours a day/seven days a week. If you call from the phone number listed on your electric bill, it should automatically report the outage for you after verifying some information. Just listen to the prompts you are given during the call.

If calling from a different number, you can stay on the line for a dispatcher to report your outage address or location number. Please be patient during major outages as phone lines can be very busy. Don't call you director to initially report your outage. It is the fastest to call in from your home phone and report it yourself.

If you still use rotary dial phone service instead of a push button phone, then you could have your neighbor call for you or you could borrow someone's cell phone.

## Help us update our Critical Load list

Electricity is a lifeline for members with medical equipment. Please notify the Cooperative office if you rely on medical equipment such as:

- Respirators, • Oxygen concentrators, • Home dialysis
- Other equipment supporting life-threatening medical conditions

The Cooperative maintains a Critical Load list. In the event of a prolonged outage, we try to contact these members and alert them that they may need to move to a place with power if their battery back-up is insufficient. It does not mean that we can restore power to their location first.

The Cooperative also tries to contact Critical Load members in advance of a planned power outage. The notification allows members to make alternative arrangements before the outage, if necessary.

If you or someone in your home relies on life support equipment, and you have not yet notified the Cooperative, please complete the coupon and return with your next payment, or you can call the Co-op with the information. Please notify the Co-op if the person with the medical condition moves off the system, no longer needs life support or passes away, so that we can keep our list current.

**REA Critical Load List**

\_\_\_\_\_ Yes, medical life-support equipment is in use

Type of medical equipment or medical condition \_\_\_\_\_

Battery Backup? \_\_\_\_\_ Yes \_\_\_\_\_ No

If yes, how long will the batteries last? \_\_\_\_\_

.....

Acct # \_\_\_\_\_

Name \_\_\_\_\_

Address \_\_\_\_\_

City/State/Zip \_\_\_\_\_

Home Phone \_\_\_\_\_

Cell Phone \_\_\_\_\_

Please return to: McLeod Co-op Power  
P.O. Box 70  
Glencoe MN 55336

## MEDICATION DISPOSAL PROGRAM

**FREE**

**Take It To THE BOX**

Safe Use • Safe Storage • Safe Disposal

McLeod County **MEDICATION** Safety Program

**SHARPS OR NEEDLES** (with a red prohibition sign)

The **Take it to the Box** collection boxes will accept both over-the-counter and prescribed medications from households. Disposal boxes will be available 24 hours a day, 7 days a week. **How to Prepare:** Leave the medicine in its original container, with the name of the medication visible and cross off any personal information.

**Take It To The Box Locations:**

- McLeod County Sheriff's Office  
801 East 10<sup>th</sup> St.  
Glencoe
- Hutchinson Police Dept.  
10 Franklin St. South  
Hutchinson
- Winsted Police Dept.  
201 1<sup>st</sup> St. North  
Winsted

Questions?  
[mcleodmeada@yahoo.com](mailto:mcleodmeada@yahoo.com)  
320-864-1390

Facebook icon, McLeod MEADA logo, MEADA logo (Coalition of McLeod County)

# As a Co-op Member, you are part of something POSITIVE

**P**ower for Living: Electricity powers our lives in so many ways that we don't stop to think about. Since 1935, your Cooperative has always been there, through rain, snow, sleet or wind, day and night, to make sure you have the safe and reliable electricity you need for heating and cooling your home, cooking your meals, taking hot showers and baths, running appliances, lighting your home, running pumps, heaters and more.

**O**wnership: At your Cooperative, you aren't just a "customer," you're part owner in the business. While you share the costs of the business, you also share in the profits through capital credits. You vote on new Bylaws, you elect representatives on the Board of Directors, and you can bring up topics for discussion at the Annual Meeting. Members are the lifeblood of any cooperative. We appreciate your patronage.

**S**olutions-based Technology: Rural electric cooperatives light the way when it comes to exploring new technology to become less dependent on foreign sources of fuel, to invest in viable alternative energy sources, and to use the vast resources of inexpensive coal available to us in a clean and responsible manner.

**I**nfluential: Rural Electric Cooperative members total approximately 42 million people in 47 states. We own and maintain 42 percent of the nation's power distribution lines and own \$112 billion in assets. That makes us all part of a very big voice. Recent member grass-roots efforts have swayed the opinions of elected representatives away from some harmful, expensive energy legislation. But there's more to do...you are part of the voice that can help to make sure that electricity remains reliable and affordable.

**T**eamwork: Cooperation among cooperatives and members is a principle of a cooperative. While we extend help to other cooperatives during storm restoration and more, we also help our members conserve energy and reduce their bills through effective energy management programs. Your Cooperative is an excellent, unbiased source of energy information.

**I**nvolvement in Community: Through Operation Round Up®, community volunteerism, the Chambers of Commerce, organizational partnerships and event sponsorships, your cooperative is actively involved in its area communities to help them remain economically sound, happy and safe places to live and grow a family.

**V**alue: We are always looking for ways to add value to our members' lives by providing options such as satellite internet technologies, Heartland Security Services and more. The same spirit that banded our ancestors together years ago to bring much-needed electricity to the countryside is still present at your Cooperative today.

**E**ducation: As a member/owner, you have a right to know how the Co-op is doing, what challenges we face, what decisions we grapple with, and what technology and government legislation will affect all of our futures. We keep you updated through the monthly newsletter, the website, bill stuffers, letters, Co-op events such as Member Appreciation Day and Coffee With the Co-op, and the Annual Meeting. We also use these vehicles to alert you to programs, money-saving promotions, rebates and energy options so you can make informed energy choices.



# Is it time to reinvest in your heating system?

In the “good ole days” of the Co-ops emerging dual fuel program, members were allowed to install wood-burning stoves and fireplaces as viable back-up units for their electric heating system during times of control. Back then, controls were predictable, usually tied to weather, and most often during the late afternoon and early evening. People who used wood, or another manual fuel source, were home during that time and could stoke the fire to keep things warm.

The old saying that “The only thing that’s constant is change” applies to our dual fuel program today. Control times are changing and most likely won’t revert to what we are used to. There will most likely continue to be more control periods, with control being used more in the mornings and even on weekends, which had not been done in years past. We understand that members without automatic back-up systems are going to experience these changes the most.

Perhaps you’d like to invest in a new automatic heating system...you can’t see yourself chopping wood five or 10 years from now. But your electric heating system is working great and it seems a shame to spend money on a new system. Here’s a couple of options to consider:

If you have an electric baseboard heating system and no ductwork, the simplest option would be to install a

thermal storage (ETS) heater. This efficient system uses off-peak electricity to heat specially-designed bricks inside a super-insulated chamber. When heat is needed during control times, these bricks provide supplemental heat. They come in many different sizes to suit any need; room-sized units would work the best in this situation.

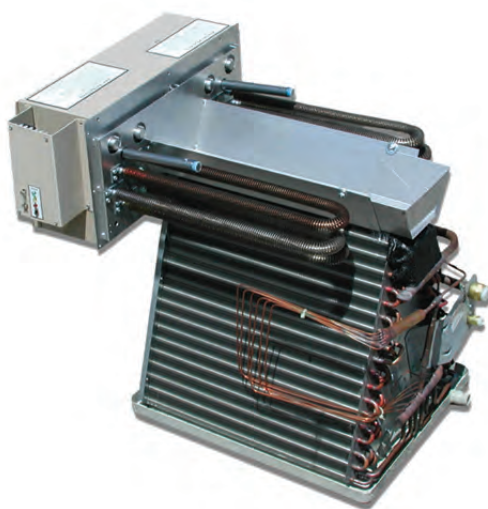


This ETS room heater is a clean, efficient and cost-effective option for supplemental heat in rooms you use the most.

If you already have ductwork throughout your home for your central air, installing a furnace as an automatic back-up makes the most sense. An ETS or fossil fuel furnace would work well.

## Want to cut your heating bills in half?

If you’re not already on the Co-op’s dual fuel program, there are many options to consider that will utilize your current heating system. Now’s the time to consult your Co-op’s Energy Management Technicians to discuss what makes the most sense. You’ll qualify for the Co-op’s low energy management electric rate, which can save you hundreds of dollars every year.



By adding an electric plenum heater to your existing fossil fuel furnace, you qualify for the half-price dual fuel electric rate!

If you are already on the Co-op’s dual fuel program and want to upgrade your system for added convenience and comfort, give us a call and we’ll go over average costs and options with you so you can make an informed decision.

## INDUSTRY

### News

## New energy standard for fridges announced

The U.S. Department of Energy announced Friday new efficiency standards for refrigerators it says will cut the energy use of most new models by 25 percent. A typical refrigerator in 2014 will use about one-fifth as much electricity as one from the mid-1970s, the department said in a release dated August 26.

The standards have been revised three times since their enactment in 1987, and the latest standards are based on a joint recommendation filed in 2010 with the Department of Energy by the groups and refrigerator manufacturers represented by the Association of Home Appliance Manufacturers.

"New fridges are bigger and cheaper than they've ever been, but due to several rounds of state and national efficiency standards they use much less energy," said Steven Nadel, executive director of the American Council for an Energy-Efficient Economy. "These new standards will deliver even more benefits for consumers and the environment."

~Energy Central

## Google details and defends electric use

Every time a person runs a Google search, watches a YouTube video or sends a message through Gmail, the company’s data centers full of computers use electricity. Those data centers around the world continuously draw almost 260 million watts — about a quarter of the output of a nuclear power plant.

Google says that people conduct over a billion searches a day and numerous other downloads and queries. But when it calculates that average energy consumption on the level of a typical user the amount is small, about 180 watt-hours a month, or the equivalent of running a 60-watt light bulb for three hours.

In part because of special arrangements the company has made to buy electricity from wind farms, Google says that 25 percent of its energy was supplied by renewable fuels in 2010, and estimates that figure will reach 30 percent in 2011.

Google also released an estimate that an average search uses 0.3 watt-hours of electricity. When multiplied by Google’s estimate of more than a billion searches a day, the figure yields a somewhat surprising result: about 12.5 million watts of Google’s 260-million-watt total can be accounted for by searches, the company’s bread-and-butter service. The rest is used by Google’s other services, including YouTube, whose power consumption the company also depicted as very small.

~New York Times

## Heartland Security Services

The power to protect when no one else is there...



You can't always be home. That's why Heartland Security systems call the fire department for you...

### Packages available:

- Fire and furnace monitoring
- Flooding
- Burglary
- Medical Alerts
- Livestock monitoring
- Carbon monoxide
- And more...

Sign up for a Heartland System by October 31 and receive a free smoke sensor! (Note: this offer cannot be combined with other specials.)

Visit [www.heartlandss.com](http://www.heartlandss.com)

**Heartland Security**  
1-888-264-6380

## Energy assistance providers

### Kandiyohi, McLeod & Meeker County areas

Heartland Community

Action Agency

PO Box 1359, 200 4th St. SW

Willmar, MN 56201

Toll free: 1-800-992-1710

McLeod: 320-587-5244

### McLeod County area

McLeod County Social

Service Center

1805 Ford Avenue North

Glencoe, MN 55336

(320) 864-3144

(320) 587-9533

1-800-247-1756 (Toll Free)

### Renville County area

Renville County Energy

Assistance Program

105 S. 5th Street, Suite 203H,

Olivia, MN 56277

320-523-2202

(320) 523-1161 Emergency

24 hr phone

### Sibley County area

Sibley County Social Services

111 8th Street

Gaylord, MN 55334

(507) 237-4000

### MN Valley Action Council

110 6th Street

Gaylord, MN 55334

(507) 237-2981

464 Raintree Road

Mankato, MN 56001

(507) 345-6822

1-800-767-7139 (Toll Free)

### Carver County area

Scott-Carver-Dakota

Community Action Agency

712 Canterbury Road South

Shakopee, MN 55379

(952) 960-9700

### Wright County area

Wright County

Community Action

130 West Division Street

Maple Lake, MN 55358

(763) 963-6500

# Cold Weather Rule helps Co-op members with utility bills during winter months

**T**he Cold Weather Rule, which is part of the Public Utilities Act, prohibits utilities from disconnecting a residential customer for nonpayment during the coldest months of the year. Your Cooperative strictly adheres to that law and offers sources of help for those unable to pay their bill. The law reads as follows:

**1** From Oct. 15 through April 15, a Cooperative cannot disconnect a customer if it would affect that person's primary heat source and if:

- You declare an inability to pay.
- Your total household income is less than 50 percent of the State Median Income.
- Your account is current for the billing period immediately prior to Oct. 15, or if you have entered into a payment schedule and are reasonably current with your scheduled payments.

**2** Before disconnecting service to a residential customer during the cold weather month, the Cooperative will provide the following information to the customer:

- Notice of the proposed disconnection.

• A statement of the customer's rights and responsibilities.

• A list of local energy assistance providers.

• A statement explaining available time payment plans and other opportunities to secure continued utility service.

**3** Any residential customer whose service is disconnected on Oct. 15 may be reconnected if:

- The outstanding balance is paid.
- A mutually acceptable payment schedule is arranged.
- A re-connection plan is requested by an income eligible customer who agrees to pay the current bill and arrearages over the cold weather months by agreeable payment arrangements.

**4** The Cooperative will not disconnect service to a residential customer who has not responded to a disconnection notice without first investigating whether the dwelling is actually unoccupied. This investigation shall include a personal visit to the dwelling. If the unit is found to be occupied, the Cooperative will immediately inform the occupant of his or her rights under this policy.

**5** Number of days after notification before disconnection. If an involuntary disconnection is to occur between Oct. 15 and April 15, then the disconnection will not occur on a Friday or on the day before a holiday.

**6** Any disputes over a residential customer's inability to pay for service, income eligibility, reasonableness of payment schedule or any other issue which a customer could raise under the Cold Weather Rule shall be referred for hearing, after reasonable notice, to the Cooperative's Board of Directors. The Cooperative and the customer shall have the right to present evidence and be heard in person at that hearing. The Cooperative's Board of Directors shall issue a written decision within 10 days after the hearing. No disconnection shall occur while a dispute is pending.

**7** The Cooperative will notify all members, prior to Oct. 15, of its Cold Weather Rule and provide the names and addresses of human service agencies and local energy assistance providers that may be of assistance in paying electric bills.

## Military Service Personnel Assistance

### Utility Payment Arrangements for Military Service Personnel

When a household member has been ordered into active duty, for deployment, or for a change of duty station, some customers may find it hard to pay their utility bills. Minnesota law protects these military personnel from shut-off if they cannot pay their utility bills in full.

### How to Apply

Contact McLeod Co-op Power at 1-800-494-6272 to obtain an application and make a payment plan, which you must keep to qualify for protection.

### Payment Plans

- If your household income is below the state median household income, pay ten percent of your households gross monthly income toward gas/electric bill; or
- If you receive energy assistance, pay ten percent of your household's gross monthly income toward your gas/electric bill; or
- If your household income is above the state median income, make and keep a payment plan.

### Right to Appeal

If you and McLeod Co-op Power cannot agree on a payment plan, you have the right to appeal to the Minnesota Public Utilities Commission. McLeod Co-op Power will not disconnect your service during the appeal process.

## Heat pumps save energy and money

When people think of home energy conservation, they often think about heating. According to the U.S. Department of Energy, space heating accounts for 34 percent of the average home's energy budget.

You can lower your heating costs and energy consumption by installing a heat pump. Whether it's a ground source or air source heat pump, the unit does not generate heat, it harnesses the heat already present in the ground or outdoor air and concentrates it for inside use.

Heat pumps cool your home by collecting the heat inside your house and effectively pumping it outside.

A ground source heat pump provides over three times more heat than it consumes in energy and can easily trim over 50 percent from your home heating bill. It is a complete stand-alone heating/cooling system when operated on the regular uncontrolled electric rate. If a member chooses to put it on the Dual Fuel Program, then the cost per kWh is about half as much as the regular rate but a backup automatic furnace or heating system is required to heat the home during Dual Fuel control times. The control times are expected to total 150-250 hours per heating season, although the program allows for a maximum of 400 hours of control per year.

An air source heat pump is less expensive and easier to have installed, and can provide about 50 percent of your home's heating needs and all of your cooling needs. Your fossil fuel furnace provides the heating on the cold days. Air source heat pumps are usually operated on the half-price off-peak rate. They are cycled during the summer peak cooling times. They operate mostly in fall and spring and on mild winter days for heating, so they are usually not operating during Dual Fuel control times anyway. An air source heat pump will operate down to about 25 degrees Fahrenheit outside temperature. To operate below this temperature, they need to be coupled with an electric plenum heater or duct heater.

Both air source and ground source heat pumps installed in 2011 may qualify for a rebate. Call 1-800-494-6272 for details. See page 7 for rebate details.

## Do tankless water heaters live up to the hype?

An unlimited and instant supply of hot water definitely sounds like a good idea, but a number of cooperatives are concerned about the impact that tankless water heaters might have on the load placed on their distribution system and on consumers' electric service panels

They can really increase the cooperative's wholesale demand cost of electricity, particularly during peak usage hours, which are generally in the morning and early evening hours. The high cost of purchasing, installing and maintaining a tankless water heater can easily outweigh the energy savings — particularly compared to McLeod Co-op Power's Electric Thermal Storage Water Heating program.

Tankless water heaters do not store hot water; they heat water on demand with a series of heating elements when a hot water faucet or valve is opened. Because of the additional electrical load they create, tankless water heaters often require an upgrade in electrical service.

A traditional tank water heater with 4,500-watt elements operates on a 30-amp circuit breaker. One whole-house tankless model boasts four 7,000-watt elements for a total electrical load of 28,000 watts. This requires wiring and a circuit breaker that can handle at least 120 amps.

If a tankless water heater is installed in an existing home without upgrading the electrical service, low voltage or sudden voltage drops are likely, which can cause dimming and blinking lights, issues with sensitive computer and electronic equipment, among other problems.

Check with McLeod Co-op Power to determine if you must improve your electric service to support a tankless water heater.



A wall-mounted tankless water heater heats water as it is used with heating elements that are activated when a hot water faucet or valve is opened. Consumers can generally save more on energy costs by using traditional water heaters efficiently.

### Efficient water heating alternatives

Consumers looking for an efficient water heater should consider a super insulated electric resistance unit. These appliances are often the most cost-effective option over the long term.

McLeod Co-op Power members who enroll in the Electric Thermal Storage Water Heating program can receive a lower electric rate for electricity used for water heating. Participants agree to have their water heater "charged" overnight with inexpensive off-peak electricity to provide enough hot water to supply the following day's use.

There are many simple ways that you can save on water heating costs including low-flow shower heads, faucet aerators, washing clothes with cold water, and just being more aware of your hot water usage. All of these are more practical and provide a greater return on investment than installing in a tankless water heater.

## ENERGY STAR rebate program for 2011



Rebates for high-efficiency heat pumps and air conditioners will continue to require installation by a "registered contractor" which has been designated as a quality installer and is listed on the hvacreducation.net web site. A list of all "registered contractors" in Minnesota is on our Cooperative web site at [www.mcleodcoop.com](http://www.mcleodcoop.com).

**There will be no rebates in 2011 for dishwashers, clothes washers, or dehumidifiers. Refrigerator/freezer units will require recycling of the old unit to qualify for rebates.**

### 2011 Rebates

<b>Ground Source Heat Pumps</b> (controlled or uncontrolled)	
Residential .....	\$400/ton
Commercial .....	\$400/ton
<b>Air Source Heat Pump</b>	
13 SEER .....	\$330
14 SEER .....	\$480
15 SEER .....	\$580
16 SEER or higher .....	\$630
<b>Ductless Air Source Heat Pump</b> .....	\$300

### Central Air Conditioner

13 SEER .....	\$ 30
14 SEER .....	\$180
15 SEER .....	\$280
16 SEER or higher .....	\$330

**Storage Space Heating** .....\$ 40/kW

### Uncontrolled electric water heater

going on the Storage Water Heating with high efficiency water heater\* .....\$200

**Storage Water Heating\* (New constr.)** .....\$100

**4 hour peak shave to Storage Water Heating\*** .....\$100

**Heat pump water heater (New constr.)** .....\$100

**Heat pump water heater replacing non-controlled electric** .....\$200

**ENERGY STAR Refrigerator with recycling of old unit** .....\$75

**ENERGY STAR Freezer with recycling of old unit** .....\$75

\*(Marathon or equivalent energy rated heater)

# Make The SWITCH LED Christmas light strings eligible for \$2 rebate

Turn in your old lights and get up to \$10 off new LED light strings instantly

To get members to decorate their homes — both indoors and outdoors — with the very efficient LED (Light Emitting Diode) lights, the Cooperative is offering a rebate of \$2 per string of lights.

The three participating hardware stores in our service area are: Hutchinson ACE Hardware, Hite Hardware in Glencoe and Home Solutions in Norwood Young America. The rebate offer is available only to McLeod Cooperative Power members November 1 through December 24, 2011 or while light supplies last. Each member may use this coupon in the newsletter to get the \$2 per string rebate on up to five strings of LED holiday lights, for a maximum rebate of \$10 per member. Save this coupon because reproductions will not be accepted!

LED Christmas lights come in mini-light sizes, icicle lights, larger C6 lights (sized like the larger outdoor lamps used 20 years ago), LED rope light and many other varieties. They can be used indoor or outdoor. LED strings use 90% less energy than a string of mini-bulbs. They last 50,000 to 100,000 hours. They are safer and are cool to the touch. If one bulb goes out, the rest stay lit. They also are

sturdier and are difficult to damage. Many even come with a lifetime or many-year warranty. LED light strings are the best and most efficient way to decorate for Christmas or any holiday.

## YOU MUST FOLLOW THESE STEPS CAREFULLY TO GET YOUR REBATE:

1. Cut out the coupon on this page.
2. Take the coupon and up to 5 old strings of holiday lights to one of the hardware stores listed on the coupon.
3. Purchase one to five strings of LED Christmas lights that have at least 50 bulbs per string.
4. Present your completed coupon at the checkout with your old strings to get \$2 off each string you are purchasing, up to a maximum rebate of \$10 per member.

If members purchase ENERGY STAR LED holiday light strings from a different retailer than these three participating stores, and want to receive the rebate, they must bring five old strings of lights to the Co-op, and give us a sales receipt for their light purchase along with the completed rebate form. These alternate rebates will be accepted through December 27, 2011. A credit for the rebate amount will be applied to the next electric bill.



**LED Holiday Lighting Promotion**  
Nov. 1 - Dec. 24, 2011  
Or while supplies last

**\$2 instant rebate per strand of LED Holiday Lights**  
purchased at these participating stores:

- Hite Hardware in Glencoe
- Ace Hardware in Hutchinson
- Home Solutions in Norwood Young America

Any LED brand of 50 or more bulb strands eligible for rebate.

Customer name: \_\_\_\_\_  
Address: \_\_\_\_\_

# of strands purchased (Max. 5): \_\_\_\_\_



1231 Ford Ave. & Hwy. 22  
Glencoe, MN  
1-800-494-MCPA

Only members of McLeod Co-op Power are eligible for rebate. One coupon from MCPA Newsletter for up to five light strands for a maximum total rebate of \$10 per customer. Reproductions of coupon are not allowed. One strand of non-LED holiday lights should be turned in for each LED strand purchased (up to five).

## Conservation and electric rates: A balancing act

McLeod Cooperative Power puts a lot of effort into helping its members conserve energy. Conservation may seem like an odd pursuit for an electric cooperative — a business helping its members buy less of the very product it sells. But there are two important reasons why the cooperative helps its members become more efficient.

First, the state of Minnesota requires it. McLeod Co-op Power is subject to the Conservation Improvement Program, a state law that requires every electric utility to prove energy savings equivalent to 1.5 percent of their annual retail energy sales. For McLeod Co-op Power the 2011 goal is to reduce sales by over 2.8 million kilowatt-hours.

### Second, conservation saves members money.

“Conservation is an ounce of prevention to avoid a pound of cure,” said Customer Service Manager Sue Pawelk. “In this case, the cure is more than a pound — it’s a multimillion-dollar power plant.”

By reducing energy sales, conservation does slightly increase the price of electricity. However, in most cases it’s less expensive than investing in a new power plant.

“We’re going to meet future demand in one of two ways: by continuing to invest in additional generation resources or by helping our members conserve electricity. As a member-owned cooperative we’d rather invest in our members,” said Pawelk. “Encouraging our members to participate in our energy conservation efforts such as installing CFLs or new ENERGY STAR appliances provides a continuous stream of energy savings over the life of the energy-saving measure. This energy savings helps to reduce future wholesale rate increases and provides a valued service to our members.”

Interested in learning how to conserve more electricity? Call McLeod Co-op Power at 1-800-494-6272.

### Conservation = lower bills

Even if rates go up, your bill doesn’t need to. The most direct way conservation benefits cooperative members is that they need less electricity. Using less electricity helps members better manage their monthly electric bills.



# BEST OFFER EVER

**Every game. Every Sunday.** At No Extra Charge. \$385 Value!

Out-of-market games only

**FREE HD ACCESS**

With Auto Bill Pay!

**FREE HBO + STARZ + SHOWTIME + CINEMAX**

FOR 3 MONTHS  
10 CHANNELS 15 CHANNELS 13 CHANNELS 5 CHANNELS

**FREE HD DVR + HD RECEIVER**

Upgrade—\$298 Value. Additional fees apply.



Models may vary

**LOCK IN YOUR SAVINGS FOR 2 YEARS!** SAVE \$31/mo. in 1<sup>st</sup> year! AND \$16/mo. in 2<sup>nd</sup> year!

**#1 in Customer Satisfaction Over All Cable and Satellite TV Providers.**

Among the largest national cable & satellite TV providers.

**NO Equipment to Buy. NO Start-Up Costs.**

**FREE Professional Installation.**

**Other great packages start at just \$29<sup>99</sup> MONTH**

Get fully loaded DIRECTV for just **\$34<sup>99</sup>** a month for 12 months. The CHOICE XTRA Package. After rebate.

Limited-time offer. Switch to DIRECTV today. CALL NOW!

**MCLEOD DIVERSIFIED SERVICES INC**

Your Local Authorized DIRECTV Dealer

320-864-3148



Offers end 10/5/11. Credit card required [except in MA & PA]. New approved customers only [lease required]. \$19.95 Handling & Delivery fee may apply. Applicable use tax adjustment may apply on the retail value of the installation.

Page 8 • McLeod Cooperative Power Association • www.mcleodcoop.com