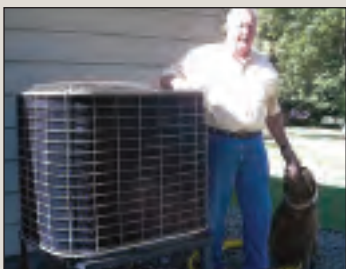


Inside this issue...



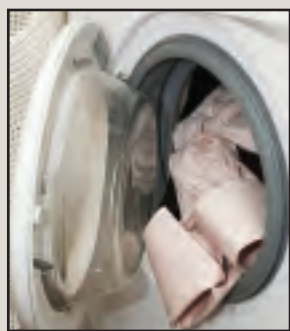
Linemen receive certification on traffic control

3



Air source heat pumps save money and energy year round

4



Save on Energy Star® rated appliances

8

Official publication of



www.mcleodcoop.com

Thank you to all members who conserved energy July 27 & Aug. 3

The evening of July 26th we activated our EXTREME PEAK DAY plan. Temperatures were forecast to be above 90 with high humidity. We called members asking for voluntary reduction in energy use during the afternoon and evening of Tuesday, July 27 because energy prices for the 27th were forecast to be very, very high. All off-peak loads were also scheduled to be controlled that day. The same conservation was needed August 3.

We want to heartily thank all members who took any steps to conserve. We know some of you shut off your appliances because you told us so. Thanks to those who shut off a swimming pool pump, turned

off the air conditioner in the shop, turned off some lights, had sandwiches for supper so you didn't heat up the house cooking, postponed doing laundry and dishes until after 9 p.m. or turned up the thermostat for the air conditioner. Your efforts were very successful.

It appears that our members did an amazing job of keeping usage on our system down on a day that was the peak day for July and also a day when prices were at an unbelievably high market rate. Thank you again. The efforts of you and all members who took steps to conserve energy added up to some measurable results.

Presorted Standard
U.S. POSTAGE
PAID
PERMIT #60
HUTCHINSON, MN
55350

Why have load control times shifted?

For more than 30 years, McLeod Cooperative Power has been using radio receivers to control off-peak loads during times of high energy use. For most of those years we needed to reduce load during 4-8 p.m., when many people were arriving home from work and dairy farmers were milking cows. Not only was McLeod's load greatest during these hours but our power supplier, Cooperative Power, and later Great River Energy, usually experienced a system peak of all 28 cooperatives during those same evening hours. This really has not changed. Our members still come home at the same time and still use the most energy from 4-8 p.m. on hot summer days and this is still when Great River Energy as a whole has its daily peak demand.

So then why is load control on peak days starting earlier? Some days air conditioners are cycled or peak shave water heaters are controlled beginning as early as 1:00 p.m. The answer is cost. Great River Energy is trying to save its cooperatives from

buying very expensive energy.

The price of electricity in the marketplace is astronomically high between noon and 8 p.m. on most hot days of summer. Great River Energy is part of the MISO (Midwest Independent Transmission System Operator) group. It includes utilities in Canada, Midwestern states in the US, and even some states south of the Great Lakes. When the cost of power in this pool is very high, Great River Energy uses our load control capabilities to reduce our demand and save its distribution cooperatives from having to purchase any more power than necessary. By controlling peak shave water heaters, cycling air conditioners and heat pumps, and having commercial members curtail use or operate on generator backup systems, we are able to reduce how much expensive energy has to be purchased. This keeps cost down to the cooperatives and its members.

Great River Energy still controls for the monthly billing peak of all 28

cooperatives, and that is usually in the early evening hours. However, when you see load control starting at noon or 2 p.m. they are controlling our off-peak loads to keep electricity costs down for all of our members.

It is also important for participants in the 8-hour peak shave water heater program to remember that when energy prices are very high or loads need to be controlled for critical reasons, that the water heater will be off for the full eight-hour maximum time period. On many control days when that full eight hours is not necessary, their water heater may only be controlled for 5-6 hours.

McLeod Cooperative Power encourages members to check our web site for updates on load control plans for each day. If there will be loads controlled on any day, the control times will usually be posted by noon on the cooperative web site: www.mcleodcoop.com.

Manager's Message —

by Kris Ingenthron, General Manager McLeod Cooperative Power Association



Reliable service at a reliable price

As stated in previous newsletters, McLeod Cooperative Power Association announced a rate and fixed charge increase. Effective July 1, 2010, the fixed charge increased \$5.00/month and on September 1, 2010, the kWh rate will increase. We have been able to maintain our current rates since September of 2006; this is our first increase in over 3 years. As your electric Cooperative, our primary goal is to minimize the effects of potential increases while maintaining cost effective, reliable energy service that you can count on.

While virtually all aspects of today's cost of living continue to rise, we've successfully avoided routine price adjustments in our local costs. These adjustments are something we only consider when we absolutely must. We believe that reliable service at a reasonable price is something you can count on and that we deliver on a daily basis.

McLeod Cooperative Power has been facing increased wholesale power costs over the past three years. Unfortunately we must ask you to also share in these costs. Maintaining dependable service at the most affordable price possible remains the cornerstone of our business. To accomplish this goal, we must also protect the integrity and financial stability of our organization. Another solution is effective long-range planning. Please be assured that we are proactively planning for your future energy needs. We work hard to anticipate any potential issues that could escalate the costs of energy. Whenever possible, we work to minimize the impact those issues could have on your energy bills. In addition, we do what is necessary to maintain and enhance the reliability of your service.

There are times when circumstances beyond our control cause change or have the potential to change the stability of our Cooperative.

This is one of those times. Although we must raise our price to cover costs of doing business, we are committed to ensuring this occurrence has the smallest possible impact on you.

We are dedicated to providing you with reliable, affordable, and environmentally-responsible electric service. If you have any questions or concerns regarding this rate adjustment, we encourage you to call our offices at 800-494-6272. We will do our best to answer your questions and work with you to reduce your monthly bill. One strategy may be to implement energy-efficiency improvements in your home or to calculate your energy use and budget it throughout the year.

Look for more budget-friendly ideas each month in our newsletter. I particularly encourage you to participate in the MyMeter program. For more information, check out our website. We're here to help and to deliver the reliable power you've come to know and respect.

Please keep safe and be aware of overhead utility lines as you prepare for the upcoming harvest season.

Cooperatively yours,

Electricity: A good value through the years

Typical monthly residential electric bills for co-op consumers have risen a total of \$34 since 2000 (green bars). Adjusted for inflation, the total increase has been only \$11, or less than 2 percent per year (blue bars).



Source: National Rural Electric Cooperative Association

Office closed Labor Day

McLeod Cooperative Power's office will be closed Monday, September 6, in observance of Labor Day. Emergency and outage dispatchers are on duty 24 hours a day and can be reached by calling 1-800-927-5685.



BOARD OF DIRECTORS

District 1

Oria Brinkmeier, *Lester Prairie*

District 2

Dale Peters, Secretary-Treasurer
Brownton

District 3

Roger Karstens, *Hutchinson*

District 4

Curtis Rossow, *Buffalo Lake*

District 5

Allan Duesterhoeft, *Hutchinson*

District 6

Lester Ranzau, Vice President
Glencoe

District 7

Bill Polchow, Asst. Secretary-Treasurer
Silver Lake

District 8

Keith Peterson, *Hector*

District 9

Gerald Roepke, President
New Germany

MCLEOD COOPERATIVE POWER ASSOCIATION NEWS

The McLeod Cooperative Power Association News is published monthly by
McLeod Cooperative Power Association
PO Box 70
1231 Ford Ave.
Glencoe, MN 55336

General Manager: Kris Ingenthron
Editor: Sue Pawelk

The McLeod Cooperative Power Association News is the official member publication of McLeod Cooperative Power Association and focuses on our members, programs and events. All member story ideas and comments are welcome. Send to Sue Pawelk, editor, at the above address.

Office Hours:

Monday - Friday
7:45 a.m. - 4:30 p.m.

Phone: 320-864-3148

1-800-494-6272

24-hour outage: 1-800-927-5685

Fax: 320-864-4850

Web site: www.mcleodcoop.com

Gopher State One Call 1-800-252-1166

Lineman receive certification on flagging and traffic control

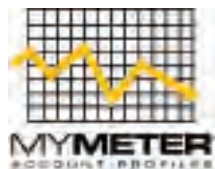


MCPA's line crew participated in a safety training program to certify them in proper use of flagging and traffic control. They completed their classroom instruction and then practiced their one-lane and two-lane road flagging skills in the alley across the street from the Cooperative office. Safety training classes are taught by the Minnesota Rural Electric Association.



Save money and energy with free MyMeter™ program on the Co-op web site

This web application is available to MCPA electric members who log onto the Co-op's web site www.mcleodcoop.com and register to use MyMeter. Click on the MyMeter icon on our homepage. The



program is designed to help

members take control of their energy use and it can help you reduce your energy bills. MyMeter is a free web-based service

that allows you to track and chart your daily energy use. Members can compare what they used this July to the same month last year. Families who participate in off-peak programs will see their off-peak usage separate from their general service usage. You can place a marker on the date you make an energy change, like getting rid of an old refrigerator, and track how much energy that action is saving you. Members can compare their monthly or daily usage to the MCPA customer average. They can also set goals for their family to conserve.

You only log in once even if you have multiple electric accounts. Registering just takes a minute or two. It is fastest to have your electric bill in hand as you will need your name as it appears on your bill, your account #, and home phone number (or phone number showing on your bill). To register you do also need to have an e-mail address.



Reminder: Rate changes to be implemented soon

Bills members receive in mid-August will include the higher fixed charge that went into effect July 1. Changes in energy rates will be effective September 1, 2010. Those rates will be applied to September energy use on the bill members receive in mid-October.

The rate changes were detailed in the rate brochure inserted into member's bills in June, and also in the June and July MCPA newsletters. There was a typing error in the energy cost for rates #2 and #5 in the July newsletter article. The bill stuffer and June issue were correct.

Single phase Rate 2 – The Farm and General Service summer rate will be \$0.1165, not \$0.1167; other months it will be \$0.1065, not \$0.1067 per kWh.

For Rate #5 – The Farm and General Service energy charge for summer will be \$0.1115, not \$0.1117; other months it will be \$0.1015, not \$0.1017 per kWh.

Heat pumps save energy and money year-round

When you think about saving the most money on your household's utility bills, folks usually think about heating and cooling, and they are right...this can account for as much as 34 percent of a home's budget.

A great way to make your home more energy efficient while saving on heating and cooling is by installing a heat pump. Whether you choose to install a ground source heat pump (GSHP) or an air source heat pump (ASHP), the concept is basically the same. The heat pump transfers heat from one location to another, rather than creating heat. A ground source heat pump, for example, transfers heat from underground and provides more than three times more heat than the amount of energy it uses, making it about 350 percent efficient.

An air source heat pump uses the

same basic principal, but pulls heat from the outside air rather than the ground. An ASHP provides up to twice as much heat as the energy it uses, for an average efficiency of about 200 percent.

A ground source heat pump is a stand-alone system that supplies 100 percent of a home's heating and cooling. It is not controlled by the Co-ops' energy management program. Although a ground source heat pump system is more expensive to install, the high efficiency means the lowest cost for heating and cooling.

An air source heat pump supplies about 50 percent of a home's heat and 100 percent of its air conditioning. When it is paired with a back-up or supplemental heating system, it qualifies for the half-price energy management electric rate,



Darrell Ward of Meeker Co-op

making this "dual-fuel" or off-peak system very economical to use. It's also much easier to have installed so you can make this change more quickly and begin to enjoy lower electric bills right away.

Both systems qualify for the Co-op's rebate program and may also qualify

for additional government rebates (see www.energystar.gov).

For more information on these systems or other ways to save on heating and cooling, call the Co-op and ask to speak to an Energy Management Technician.

System	Efficiency	Energy	Unit Cost	Annual Heating Cost
GSHP	350%	7,500 kWh	\$0.10	\$750.00
Elec. Storage Heat on EM rate	100%	26,255 kWh	\$0.050	\$1,312.75
LP gas furnace	90%	1,067 gal.	\$1.60/gallon	\$1,707.20
Dual fuel with ASHP	90%	534 gal/6,556 kWh	\$1.60/gal - \$0.050/kWh	\$1,182.20
Oil furnace	85%	763 gallons	\$2.80/gallon	\$2,136.40

Use your own energy rate for more accurate comparison. Annual energy use based on a 1,600 square-foot home with R-19 walls and R-44 ceiling with an insulated lower level requiring 89,506,000 BTUs of heat energy annually. EM = Energy management

You can't put a price on security...

Award-winning fire, flood, break-in and more protection...

Heartland Security

But you can save \$100 on a new Heartland Security system!

Sign up for a Heartland System by August 31 and receive \$100 off! (Note: this offer cannot be combined with other specials.)

Want to know for certain your home is safe when you're away? Wish to know the police or fire department can be on their way in the event of an emergency... automatically? A Heartland Security system can do all of these things and more! In addition, get \$100 off this type of priceless security between now and August 31. Heartland systems can also be customized to fit a multitude of applications, including livestock, surveillance, medical and more. Call 1-888-264-6380 or visit www.heartlandss.com for more information.

ALWAYS CALL BEFORE YOU DIG

One free, easy call gets your utility lines marked AND helps protect you from injury and expense.

Safe Digging Is No Accident: Always Call 811 Before You Dig

Know what's below. Always call 811 before you dig. Visit call811.com for more information.

National Farm Safety and Health week is September 19-25

Unfortunately, one of the top hazards on today's farms remains electrocution, which frequently occurs during harvest season when farm equipment comes in contact with power lines...particularly near grain bins when augers make contact with power lines.

Following are a few safety tips from Safe Electricity:

- Know the location of power lines and keep farm equipment at least 10 feet away from them.
- Use care when raising augers or the bed of a grain truck. It can be difficult to estimate distance and sometimes a power line is closer than it looks. When moving large equipment or high loads near a power line, always use a spotter, or someone to help make certain that contact is not made with a line.
- Always lower portable augers or elevators to their lowest possible level - under 14 feet - before moving or transporting them. Variables like wind, uneven ground, shifting weight or other conditions can combine to create an unexpected result.

- Be aware of increased height when loading and transporting larger tractors with high antennas.
- Never attempt to raise or move a power line to clear a path!
- Don't use metal poles when breaking up bridged grain inside and around bins.
- As in any outdoor work, be careful not to raise any equipment such as ladders, poles or rods into power lines. Remember, non-metallic materials such as lumber, tree limbs, tires, ropes, and hay will conduct electricity depending on dampness and dust and dirt contamination.
- Use qualified electricians for work on drying equipment and other farm electrical systems.

If you contact a power line with your vehicle, stay inside the vehicle. If the power line is energized and you step outside, your body becomes the path and electrocution is the result. Stay inside the vehicle unless there's fire or imminent risk of fire.

In that case, the proper action is to jump – not step – with both feet hitting the ground at the same time.



Do not allow any part of your body to touch the equipment and the ground at the same time. Continue to hop or shuffle to safety, keeping both feet together as you leave the area.

Once you get away from the equipment, never attempt to get back on or even touch the equipment. Many electrocutions occur when the operator dismounts and, realizing nothing has happened, tries to get back on the equipment.

Being aware of your surroundings and practicing these safety tips will help ensure you enjoy a safe harvest. For more information, visit SafeElectricity.org.

ELECTRICITY IS A BARGAIN And there are very few things in this world that have always given us so much for so little. We're proud to bring you the power that makes life easier, especially at such a great price.

INDUSTRY News

Wind power might require a costly grid expansion

The Midwest could be crisscrossed with a new network of high voltage power lines to move wind-generated power from the windiest spots in the Dakotas, Iowa and Minnesota. A group of utilities in 11 states is studying three alternatives, each of which would cost at least \$23 billion over the next 20 years. The studies are in response to public policy moves that could result in a dramatic increase in wind energy development.

More than 30 states have moved to spur utilities to add more renewable energy. Federal energy legislation pending in Congress could set a national renewable mandate as well.

-Milwaukee Journal Sentinel

Co-op-backed energy efficiency bill clears House panel

Co-ops would play a leading role in upgrading energy efficiency in rural America and controlling their members' energy bills, under a measure that cleared the House Agriculture Committee July 14. On a bipartisan voice vote, the panel approved H.R. 4785, the Rural Energy Savings Program Act, also known as Rural Star <<http://www.ect.coop/public-policy-watch/legislation/efficiency-bill-envisions-co-op-role>> . The legislation authorizes a \$4.9 billion loan pool through the Rural Utilities Service for co-ops to defray the up-front costs of their members' energy-related improvements.

"It is clear that this represents a win-win situation for the constituents we represent on the Agriculture Committee," said House Agriculture Committee Chairman Collin Peterson, D-Minn. "We have an opportunity before us to enact policy that will significantly reduce energy costs and consumption, as well as improve the quality of life in our rural communities," he said.

NRECA CEO Glenn English praised the vote and said the Rural Star program could lead to savings on monthly bills and forestall some of the need for additional, more expensive generating facilities. Peterson and Rep. Frank Lucas, R-Okla., the ranking committee member, also noted that a driving force behind the program is to slow the need for new generation.

"The Rural Energy Savings Program Act represents an innovative and common-sense approach that is tailored to the unique needs of rural America," English said. "Because of a variety of factors, prices for electricity are going to go up in the future. This program will help to hold down those increases."

-Electric Co-op Today



grows into successful business and shares dividends with cooperative owners

Back in 1999, nine rural electric cooperatives each invested some money to become partners in Heartland Security Services. Over the years, five additional cooperatives have become partners. Over the eleven years that Heartland Security Services has been providing protection services to homes and businesses in our area, they have also been growing as an entity. In 1999, Heartland had a few hundred accounts. Today, they are monitoring about 5,500 security and medical accounts, mostly at locations in Minnesota and Iowa.

Financially, Heartland Security has also grown from a fledgling business to a strong, award winning business with many successive years of positive margins. The investment McLeod Cooperative Power and the other rural electric cooperatives made are now paying us back. In July, Heartland Security Services presented each co-op with a dividend check. Dividends from Heartland Security Services contribute to the Co-op's non-electric revenue.

Besides contributing dividends to the Co-op, Heartland Security also provides security monitoring for MCPA members at a 10% discount. Call Heartland Security Services at 1-888-264-6380 for a no obligation security assessment. Heartland provides fire and intrusion detection, monitoring for freeze up or flooding, cameras and security for businesses, and environmental monitoring of animal confinement buildings.

Coping through a power outage

When you experience a power outage, usually you call the Cooperative's outage #1-800-927-5685 to report the outage. Within a few hours or less the power is back on.

***B**ut what do you do when a tornado, ice storm or large-scale grid failure takes the power out for several days? Are you prepared? Most Americans are so dependent upon the grid's constancy that they don't know how to function without it. How will you pump water or run the furnace fan or cook a meal?*

- The Red Cross and Federal Emergency Management Agency suggest that people should prepare for three days without power. **They suggest a minimum of one gallon of water per person per day.** This is an absolute minimum, and covers only your drinking water and cooking needs. Bathing is out of the question. So always keep a supply of bottled jugs of drinking water in your home. They can be tucked away in the basement or some can be stored in the freezer to keep food cold if the power goes out and to eventually be used for drinking.
- **If you need to collect water from a nearby river or stream or catch rainwater off of the roof, it will need to be purified before it can be used for cooking, drinking or washing dishes.** This can be done inexpensively by boiling the water or by adding 12 drops of plain, unscented chlorine bleach per gallon of water.
- **If there is still bath water in the bathtub and the power goes out, leave it there.** It works well for flushing the toilet when your well pump won't run.
- **Keep candles, matches, camping lanterns, flashlights and a battery-powered radio in the basement** so you have it when you head downstairs during severe weather conditions. You will need it if the power does not come back on right away. Keep a supply of batteries that fit the flashlight and radio on hand also.
- And it is always a good idea to **have a variety of canned food in the house** if there is a prolonged outage.
- **Keep at least one regular telephone in the house** that requires just a phone line to operate. Rechargeable phones, portable phones or cell phones will only last for a limited time. And in major power outages, it is likely cell phone towers could be out of service, so that reliable land line is a good idea.
- If the power goes off and comes back on for brief intervals, **turn off major appliances** like air conditioners, well pumps, computers, TV's, etc. Situations of repeated intermittent power can be hard on appliances.
- **Keep your refrigerator or freezer closed.** It will keep your food from spoiling much longer. Cover the freezer with blankets to help retain the cold. Then find dry ice. Blanket coverings will keep an unopened, full freezer cold for two days, and the addition of dry ice will prolong that to three or four days. If food starts to thaw the rule is "If in doubt, throw it out."
- **If power lines are down, stay away and call the power company.** Do not try to remove branches or debris from power lines. You cannot tell if they are energized just by looking at them.
- **If you own a generator, you will be able to keep your basement dry by using it to power the sump pump as needed.** A few hours at a time on the freezer or refrigerator will keep food cold. Appliances that are 120-volt with their own plug-in cord can be safely plugged into the generator, as they are operated separately from the power grid. However, make sure any generator used to power hardwired appliances, furnace fans, entire panels or services, has its own disconnect that meets electrical code. **Operating a generator without the proper disconnect protection could send power back down the line electrocuting a linemen working to repair power lines in the area.**

Is it too early to think about winter heating bills?

Summer is the perfect time to think about winter heating bills. It is the perfect time to think about energy efficiency and take action to reduce winter heating costs. McLeod Cooperative Power customers can benefit from the half-price, off-peak electric rate for winter heating and summer cooling by installing a high efficiency air source heat pump and electric plenum heater combination. It will provide heating for less than an oil or propane system. It will provide summer cooling at half the regular electric rate. And for a few more months, the Co-op has big rebates for air source heat pumps. You purchase a qualified ENERGY STAR heat pump from your HVAC contractor and the Co-op sends you the rebate if it is installed by one of the qualified contractors on the list on the Co-op's web site.

The other option for members with in-floor or hydronic heating is to operate their system with an electric boiler or mini-boiler. An electric boiler with a fossil fuel boiler back-up qualifies for the Dual Fuel electric rate. Get most of your winter heating at the half-price electric rate and use your fossil fuel system during load control times.

Call the energy experts at McLeod Co-op Power to learn more about either one of these heating system options today. 1-800-494-6272.

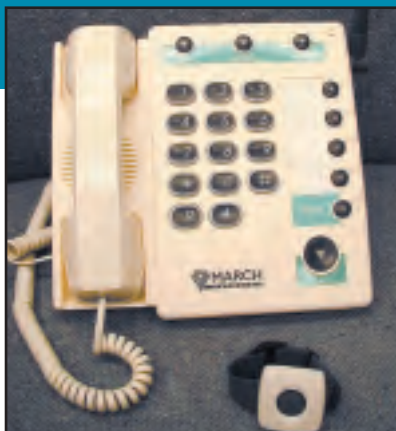
Photo shows an electric plenum heater as it sits above the A-coil for cooling. This is how it would look in the plenum of your gas or oil furnace. Your existing furnace fan's blower would circulate air over the electric heating elements and into your ducts, to provide the home with warm air.



Load management remains stable at about 5 cents per kWh

Although many of the Co-op's energy rates needed to be adjusted up, the cost of off-peak energy has remained stable. Based upon the cost analysis by Power System Engineering, the firm that performed the Co-op's rate study, it was shown that the cost member's were paying for off-peak energy last year was sufficient for 2010 also. Last year member's paid the \$0.0430 per kWh rate plus a power cost adjustment of \$0.0072, equaling \$0.0502. There was not a need a raise the rate for heating and water heating during off-peak times for the coming year, so the new published rate will be \$0.0502. We are pleased that this rate could remain competitive with other fuel sources.

Does someone you love live alone?



Family members are often concerned about the personal safety of their loved ones, especially those who live alone. This uneasiness is compounded if the loved one is elderly, has medical concerns or lives a distance away from other family members. Yet we

recognize that it is also important for our loved ones to maintain their sense of independence. McLeod Cooperative Power offers a solution to this delicate situation. It is the First Alert Personal Emergency and Monitoring System.

Easy to Operate

System installation is easy. The equipment is simple to operate and the monthly monitoring fee is inexpensive. The system features a high-quality advanced telephone with a speakerphone and emergency response pendant or wristband. In case of an emergency, help is summoned through a simple touch of the pendant/wristband that is worn at all times. The speakerphone is immediately activated and contact is made with a 24-hour response center.

Professional Response

Professional dispatchers staff the response center. Since the automated computer system has already been programmed with the necessary subscriber information such as address, family contacts and medical history, the dispatcher will be able to immediately contact the appropriate authorities.

Preserves Mobility

A particularly nice feature is that this sophisticated speakerphone and pendant/wristband alert allows mobility throughout the home and the nearby yard. The speaker-phone is so powerful that it even allows conversation from across the room.

A Quality Phone, plus more!

The speakerphone is a quality device that can be used for everyday conversation, just as a normal telephone. The number keys are especially large and are backlit, making dialing easy for arthritic hands or someone with reduced vision.

Peace of Mind is Affordable

Contact McLeod Cooperative Power to have a personal emergency response system installed anywhere within McLeod, Sibley, Carver or Renville Counties. Subscribers do not need to receive electric service from the Cooperative in order to participate in this program. Installation of the rental phone monitoring system is \$49 and the monthly monitoring fee is \$30.00.

Lighting and efficiency grants for farms and businesses

Farmers and business owners whose commercial operation is served by the Cooperative are eligible to apply for energy grants or lighting rebates when they upgrade to more efficient motors, fans, light fixtures, etc. Some financial assistance is also available for commercial energy audits. Call Shannon at the Cooperative if you are planning a new or retrofit project to see if what you are doing qualifies.

Finally

appliances you can feel good about



- The average refrigerator sold today uses less energy than a 60-watt lightbulb left on for 24 hours a day.
- Every year refrigerator efficiency improves. An average 2008 fridge consumes 3 percent less energy than one made in 2007.
- 44 percent of fridges that could be retired or recycled are used as second fridges, sold, or given away.
- 26 percent of all U.S. households maintain a second refrigerator.
- Only three out of every 10 refrigerators sold are Energy Star-qualified.
- 27 million inefficient fridge models made before 1993 are still in American homes.

Source: Energy Star, Association of Home Appliance Manufacturers, Image: GE Consumer Products



2010 Appliance Promotion

PROMOTION DATES:
SEPTEMBER 1–OCTOBER 31, 2010

Save on ENERGY STAR® rated appliances from September 1–October 31.

Save energy, save water and save money. This special rebate offer is available at any retailer for the purchase of any ENERGY STAR refrigerator or clothes washer. Just ask your local cooperative for the rebate form to submit with your sales receipt.

\$125 OFF
ENERGY STAR®
REFRIGERATORS*

\$75 OFF
ENERGY STAR®
CLOTHES WASHERS

Make the right choice for a cleaner future with energy-saving appliances.

Enter for your chance to win the
Fill Your Fridge Sweepstakes:

mnbrighterideas.com



*with the recycling of your old refrigerator

ANOTHER BRIGHT IDEA FROM
McLEOD COOPERATIVE POWER

PROMOTION DESCRIPTION	REDEMPTION PROCESS	PARTICIPATING STORES
	COUPONS: \$125 OFF ENERGY STAR® REFRIGERATORS* \$75 OFF ENERGY STAR® CLOTHES WASHERS Things to note: <ul style="list-style-type: none">- Free Delivery—cooperative members pay the standard \$65 delivery fee (fees may vary) but are given the option of receiving the fee back in the form of a rebate with either a Sears Gift Card or MasterCard® debit card.- Sears is hosting a special Friends & Family Night on October 4 in Hutchinson, with exclusive savings for cooperative members in addition to the \$125/\$75 coupon savings. Visit mnbrighterideas.com for specific dates and store hours.- Instant savings at counter with your coupon.- This offer is in addition to all other Sears offers. * With the recycling of your old refrigerator.	All Minnesota Sears locations
OTHER RETAILERS	SPECIAL REBATES: \$125 OFF ENERGY STAR® REFRIGERATORS* \$75 OFF ENERGY STAR® CLOTHES WASHERS Things to note: <ul style="list-style-type: none">- Rebate forms can be obtained from your local cooperative for appliance purchases made at other retailers.- Rebate is available when you recycle an old refrigerator.- Allow 6-8 weeks for rebate processing.- After October 31, 2010, appliance rebate amounts will revert to the standard amounts offered by cooperatives.	- Isakson's in Gibbon - Thomes Brothers in Arlington - Y-Not Maytag Appliance Center in Arlington - Home Source in Hutchinson - Menards in Hutchinson - Home Solutions in Glencoe - Home Solutions in Norwood Young America



FILL YOUR FRIDGE SWEEPSTAKES

As part of the Appliance Promotion, cooperative members can also enter a sweepstakes one grand prize of \$500 in free groceries and up to 28 \$100 energy credit prizes, one per participating cooperative). Details and participation information for the sweepstakes are available on mnbrighterideas.com.

mnbrighterideas.com

